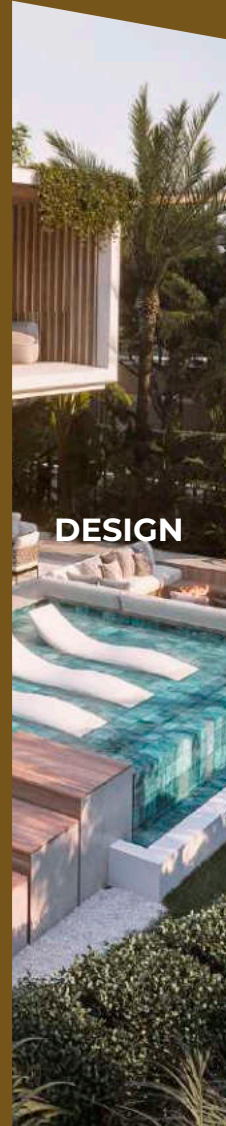


LOCATION



CONCEPT



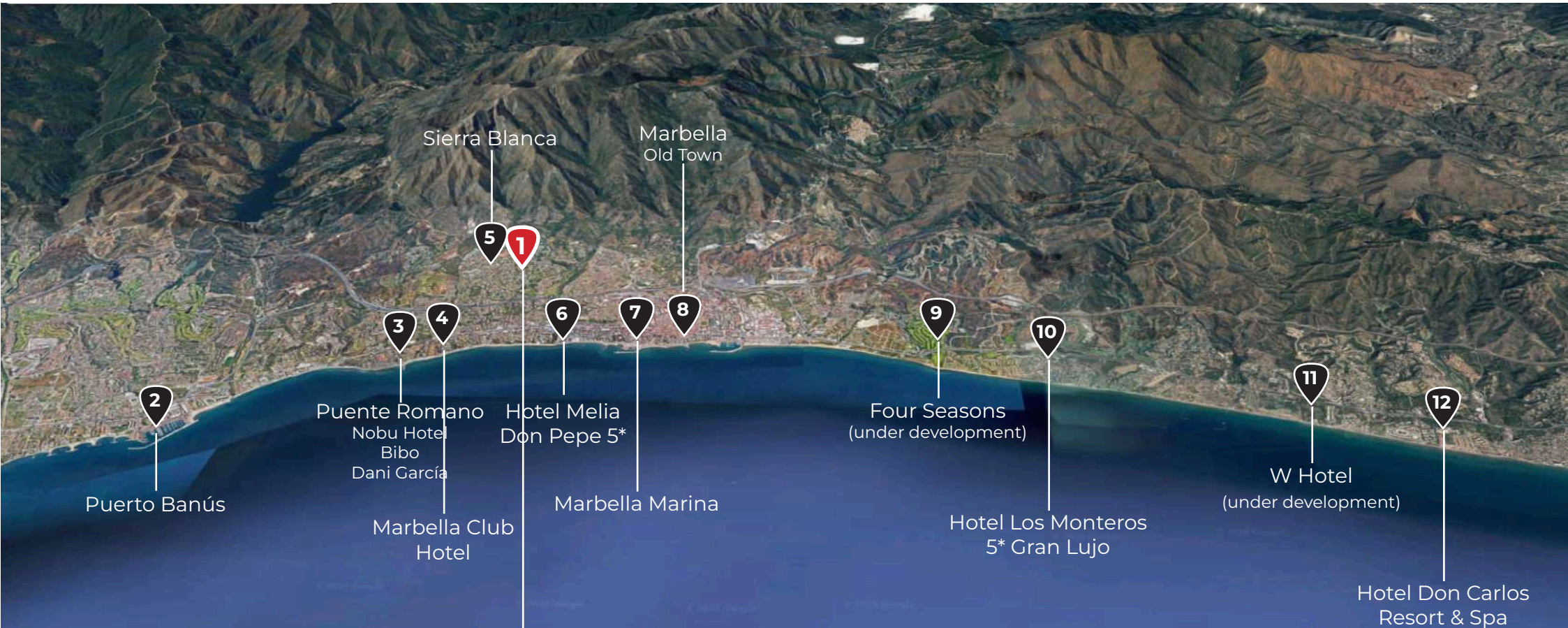
DESIGN

LOCATION

We are facing a land with wonderful characteristics, since it is located in an unbeatable area of the Costa del Sol:

The plot, with **stunning, panoramic sea and mountain views**, is located in the Golden Mile, about 5 km from Puerto Banús, 3 km from the urban center of the city and with access from the A7 motorway.

As we already know, the Golden Mile of Marbella is one of the most luxurious areas of the world, with prestigious hotels, numerous restaurants and shops along the main road, and renowned beach clubs and first-class residential areas.



Sierra Blanca

Marbella
Old Town

5 1

3 4

6

7 8

9

10

11

12

Puerto Banús

Puente Romano
Nobu Hotel
Bibo
Dani García

Marbella Club
Hotel

Hotel Melia
Don Pepe 5*

Marbella Marina

Four Seasons
(under development)

Hotel Los Monteros
5* Gran Lujo

W Hotel
(under development)

Hotel Don Carlos
Resort & Spa



Marbella

When it comes to luxury Mediterranean resorts, Marbella stands out among the best

Along with 27 kilometres of the most beautiful sandy beaches, prestigious golf courses, spectacular coastal views, and a climate that makes outdoor living a year-round possibility, Marbella offers a unique, luxurious lifestyle.

A modern infrastructure with first class medical facilities and highly regarded international schools, designer shopping, a lively social scene and World-class cuisine makes Marbella the most sought after place for a second home or permanent residence.



Golden Mile

Marbella Golden Mile – everything else is a compromise

Has evolved around the success of the legendary Marbella Club and Puente Romano Hotels, one of the prime millionaire's row on the Mediterranean, the Golden Mile, offers a chance to enjoy a privileged, unique lifestyle with its all imaginable amenities of the iconic hotels, elegant beach clubs, and Michelin star restaurants.

With demand far outstripping supply and their scarce, luxury villas, exclusive apartment communities and beachside mansions on the Golden Mile confirm themselves as the most desirable homes to own in Marbella.







THE COMPLEX





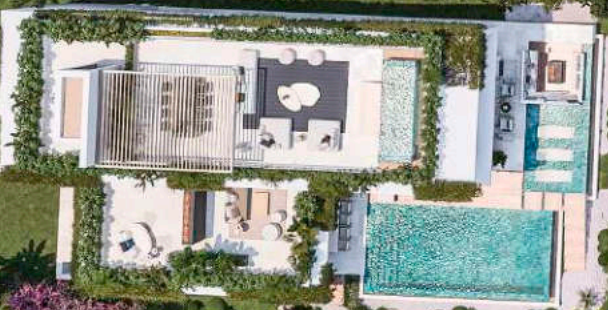
VILLA 2



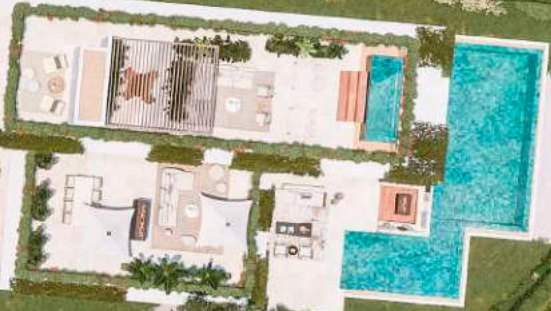
VILLA 5



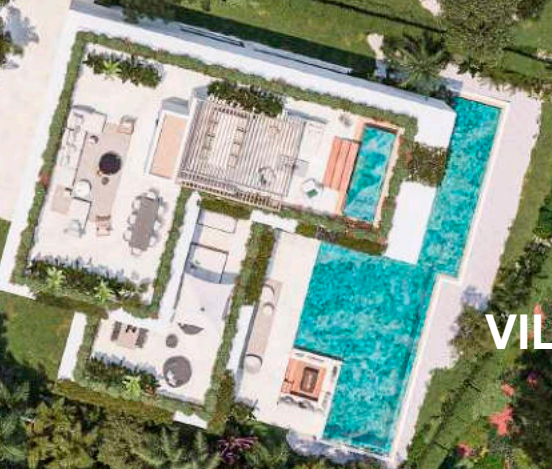
VILLA 1



VILLA 4



VILLA 3





VILLA 1

VILLA 2

VILLA 3

VILLA 4

VILLA 5

THE VILLAS

The finest architecture, excellent design with top luxury features, the highest standards of quality and detail, and advanced technology are used to create truly sophisticated homes.

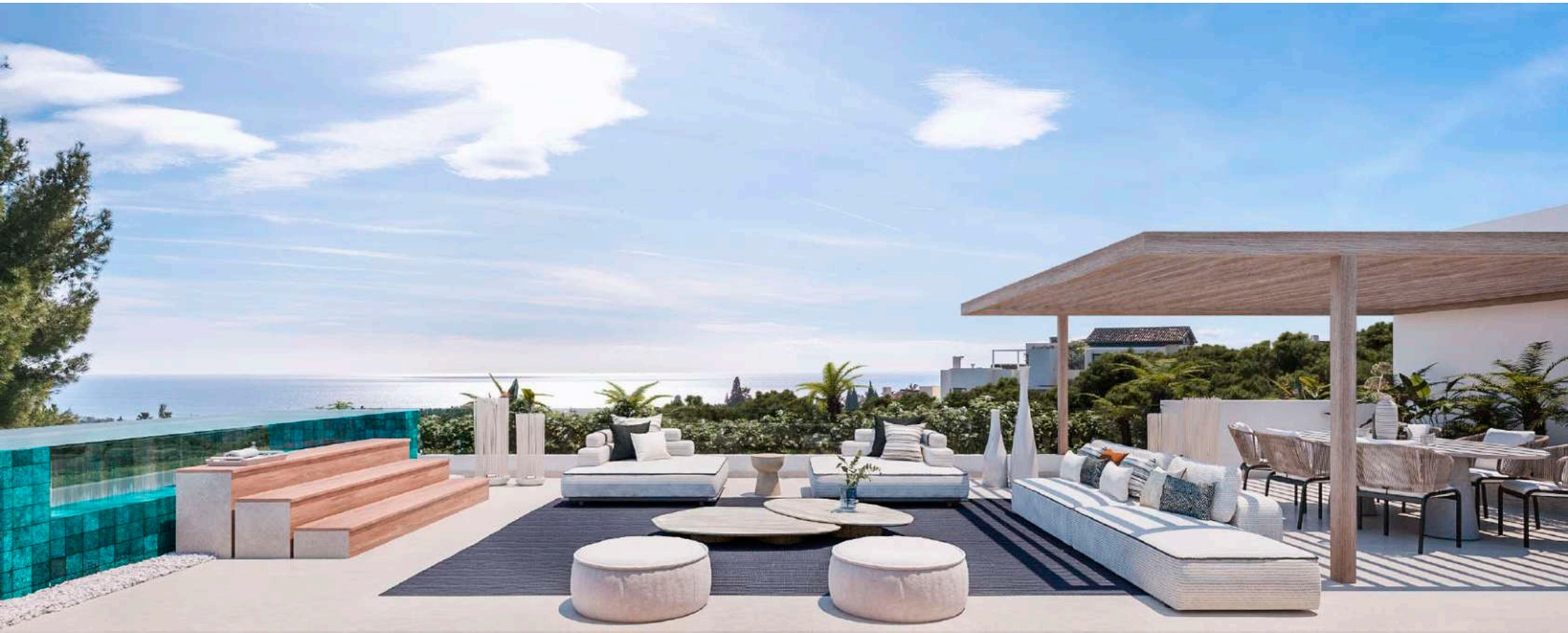
The villas comprise a contemporary style openplan living areas and beautifully designed kitchens, spacious master suites with walk-in dressing rooms and bathrooms, and modern-styled terraces and pool areas with the cossetting embrace of lush green gardens and solid stone walls.

The properties also offer a double garage and a large basement with natural light that are ideally suited as entertainment areas.

Situated in the absolutely best location of Marbella, The Collection is the first new-built homes on Camoján in years that stand out for their unique lifestyle.

















FLOOR PLANS

VIVIENDA 1 · Sótano



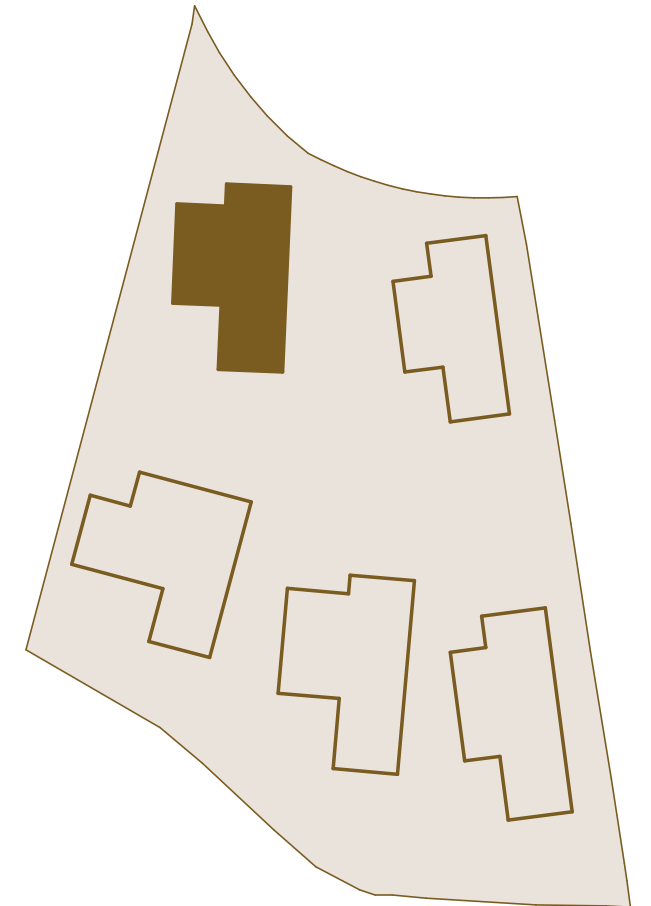
Escala 1:150

0 1 2 5 10 m



VIVIENDA 1 · Sótano

PLANO SITUACIÓN



SUPERFICIES CONSTRUIDAS

Planta Sótano

Construida Interior Bajo Rasante 444,97 m²

Total 444,97 m²

SUPERFICIES PARCELA

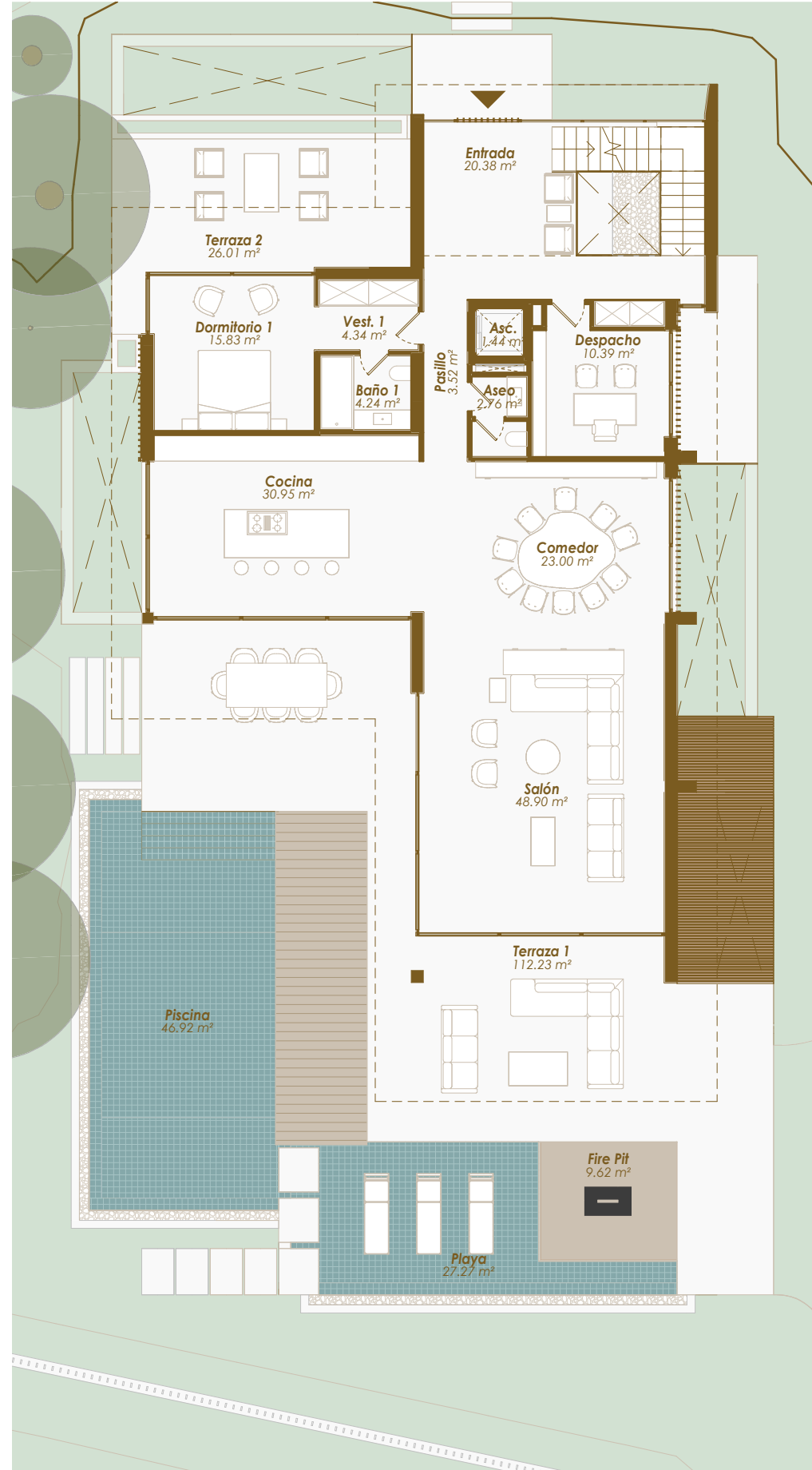
SUPERFICIES ÚTILES

Planta Sótano

Interior 396,75 m²

Total 396,75 m²

VIVIENDA 1 · Planta Baja



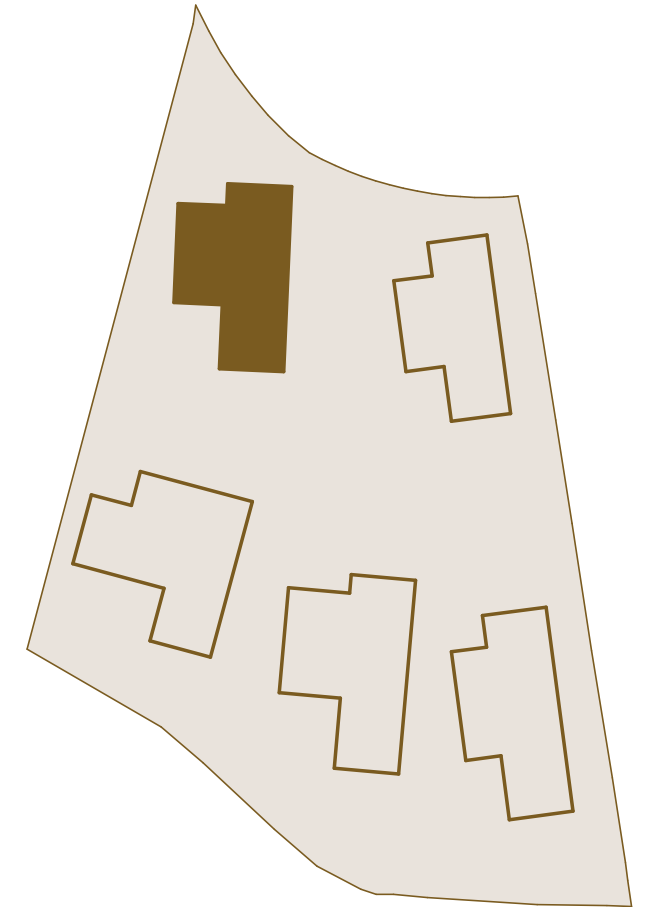
Escala 1:150

0 1 2 5 10 m



VIVIENDA 1 · Planta Baja

PLANO SITUACIÓN



SUPERFICIES CONSTRUIDAS

Planta Baja	
Construida Interior Sobre Rasante	199,50 m ²
Terraza Cubierta	85,95 m ²
Terraza Descubierta	84,04 m ²
Total	369,48 m²

SUPERFICIES PARCELA

Piscina	83,12 m ²
Jardín	616,18 m ²

SUPERFICIES ÚTILES

Planta Baja	
Interior	165,74 m ²
Exterior	222,05 m ²
Total	387,79 m²

VIVIENDA 1 · Planta Alta



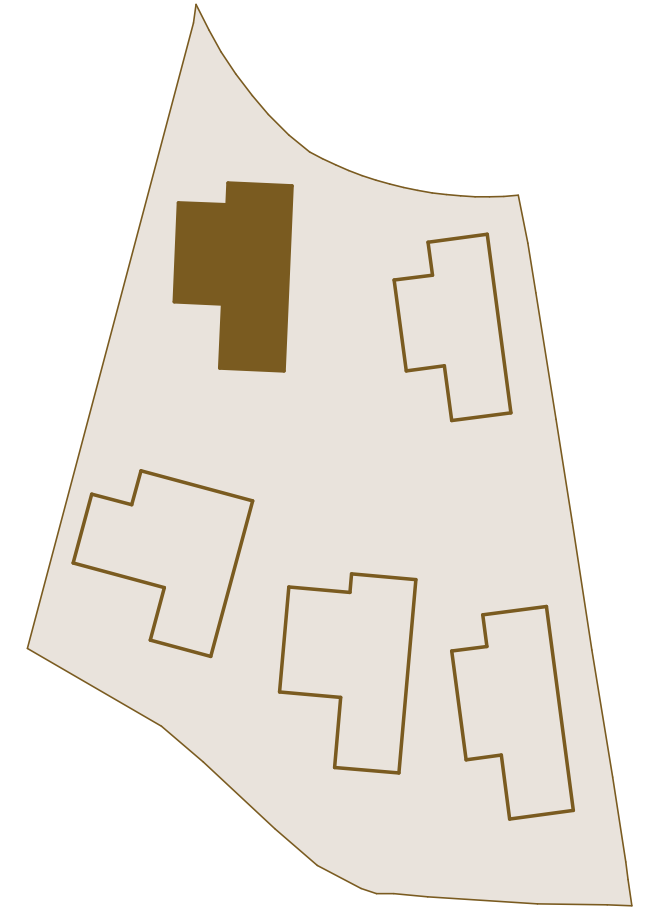
Escala 1:150

0 1 2 5 10 m



VIVIENDA 1 · Planta Alta

PLANO SITUACIÓN



SUPERFICIES CONSTRUIDAS

Planta Alta	
Construida Interior Sobre Rasante	146,13 m ²
Terraza Cubierta	15,31 m ²
Terraza Descubierta	75,04 m ²
Total	236,48 m²

SUPERFICIES PARCELA

SUPERFICIES ÚTILES

Planta Alta	
Interior	118,90 m ²
Exterior	76,97 m ²
Total	195,87 m²

VIVIENDA 1 · Solarium



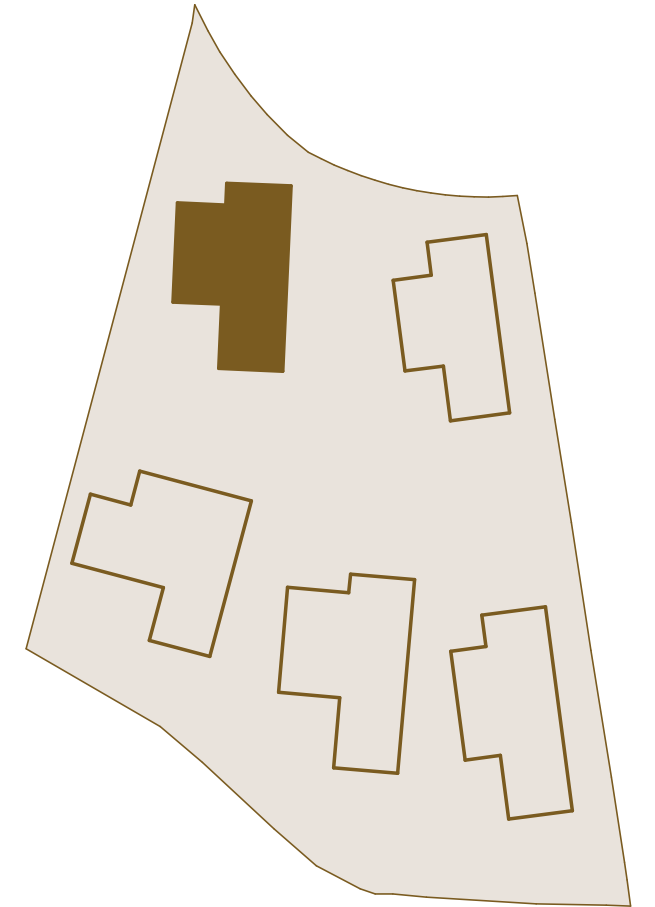
Escala 1:150

0 1 2 5 10 m



VIVIENDA 1 · Solarium

PLANO SITUACIÓN



SUPERFICIES CONSTRUIDAS

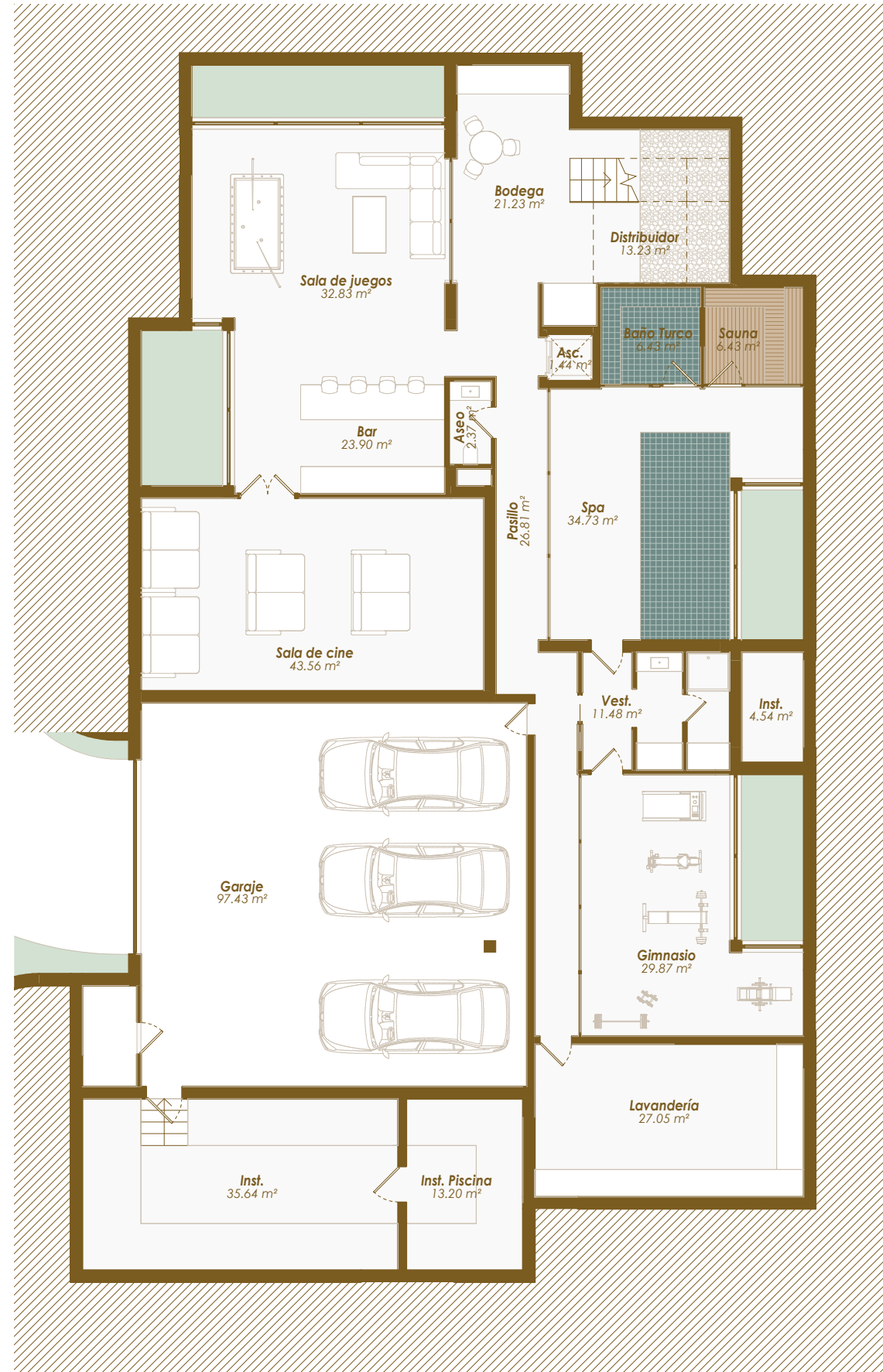
Planta Solarium	
Construida Interior Sobre Rasante	5,40 m ²
Terraza Cubierta	6,80 m ²
Terraza Descubierta	137,95 m ²
Total	150,15 m²

SUPERFICIES PARCELA

SUPERFICIES ÚTILES

Planta Solarium	
Interior	3,06 m ²
Exterior	107,98 m ²
Total	111,04 m²

VIVIENDA 2 · Sótano

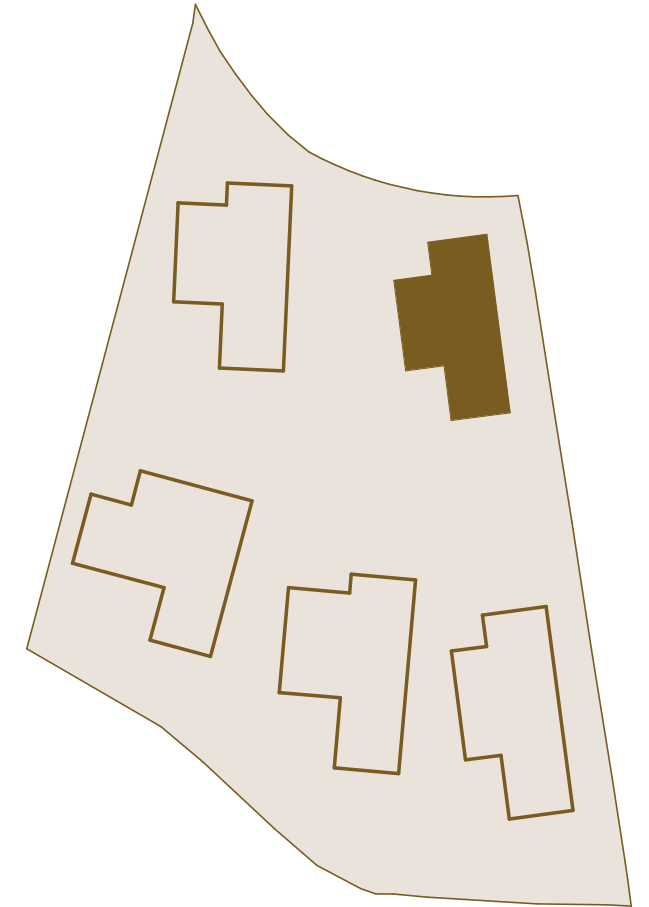


Escala 1:150



VIVIENDA 2 · Sótano

PLANO SITUACIÓN



SUPERFICIES CONSTRUIDAS

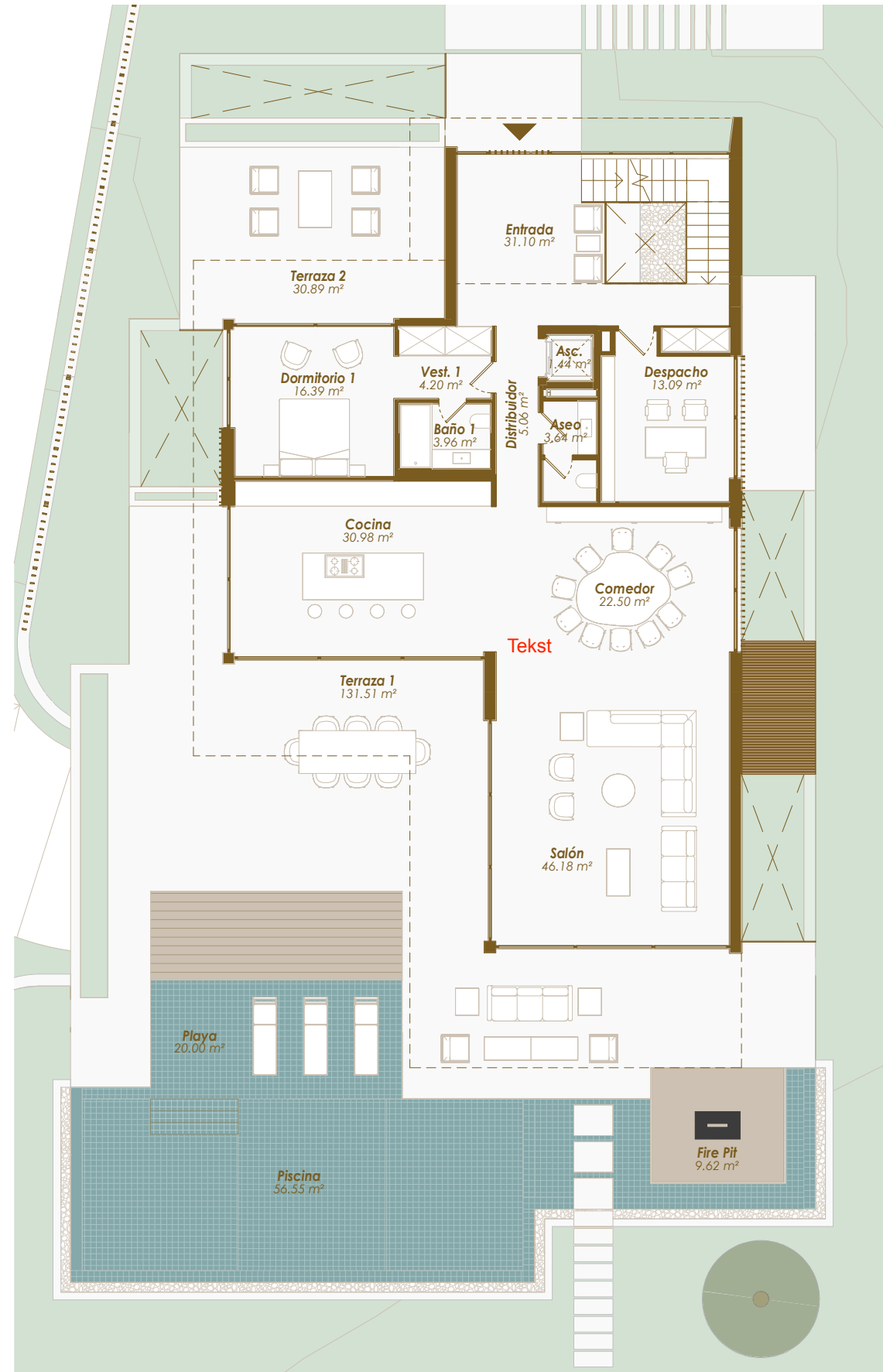
Planta Sótano	
Construida Interior Bajo Rasante	489,65 m ²
Total	489,65 m²

SUPERFICIES PARCELA

SUPERFICIES ÚTILES

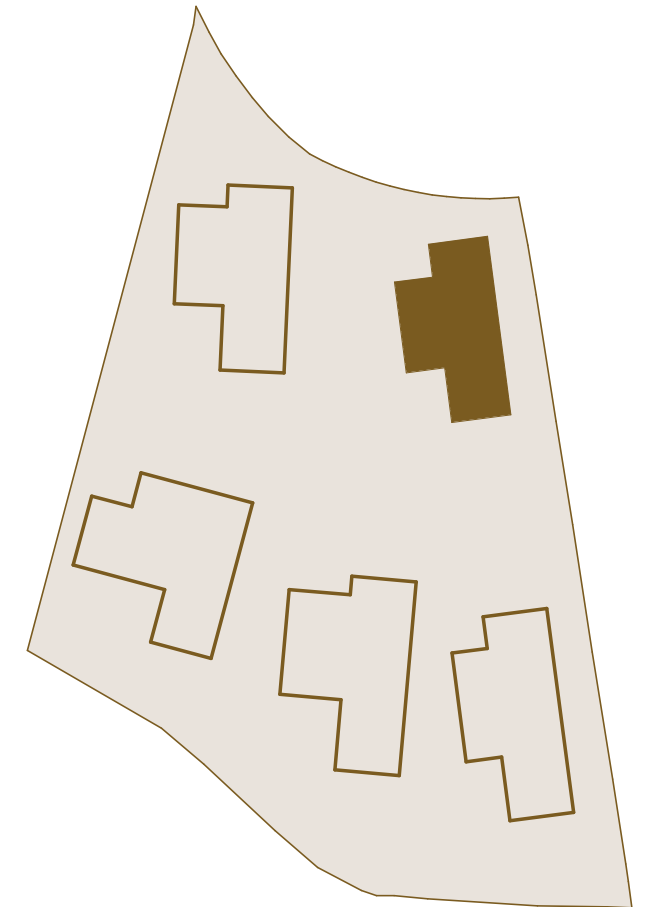
Planta Sótano	
Interior	400,14 m ²
Total	400,14 m²

VIVIENDA 2 · Planta Baja



VIVIENDA 2 · Planta Baja

PLANO SITUACIÓN



SUPERFICIES CONSTRUIDAS

Planta Baja	
Construida Interior Sobre Rasante	199,98 m ²
Terraza Cubierta	74,49 m ²
Terraza Descubierta	121,31 m ²
Total	395,78 m²

SUPERFICIES PARCELA

Piscina	99,91 m ²
Jardín	504,61 m ²

SUPERFICIES ÚTILES

Planta Baja	
Interior	178,54 m ²
Exterior	262,22 m ²
Total	440,76 m²

VIVIENDA 2 · Planta Alta

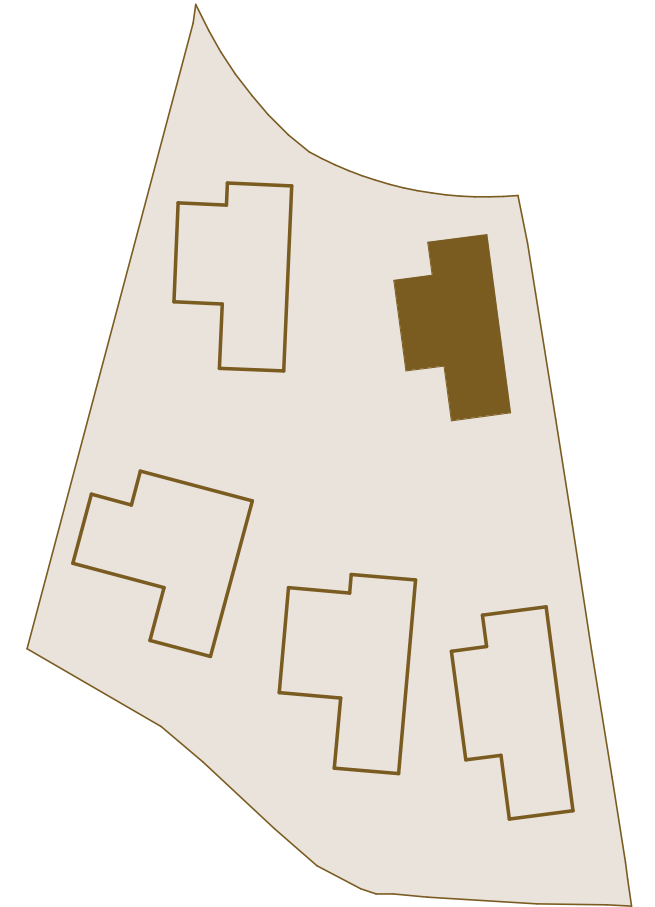


Escala 1:150



VIVIENDA 2 · Planta Alta

PLANO SITUACIÓN



SUPERFICIES CONSTRUIDAS

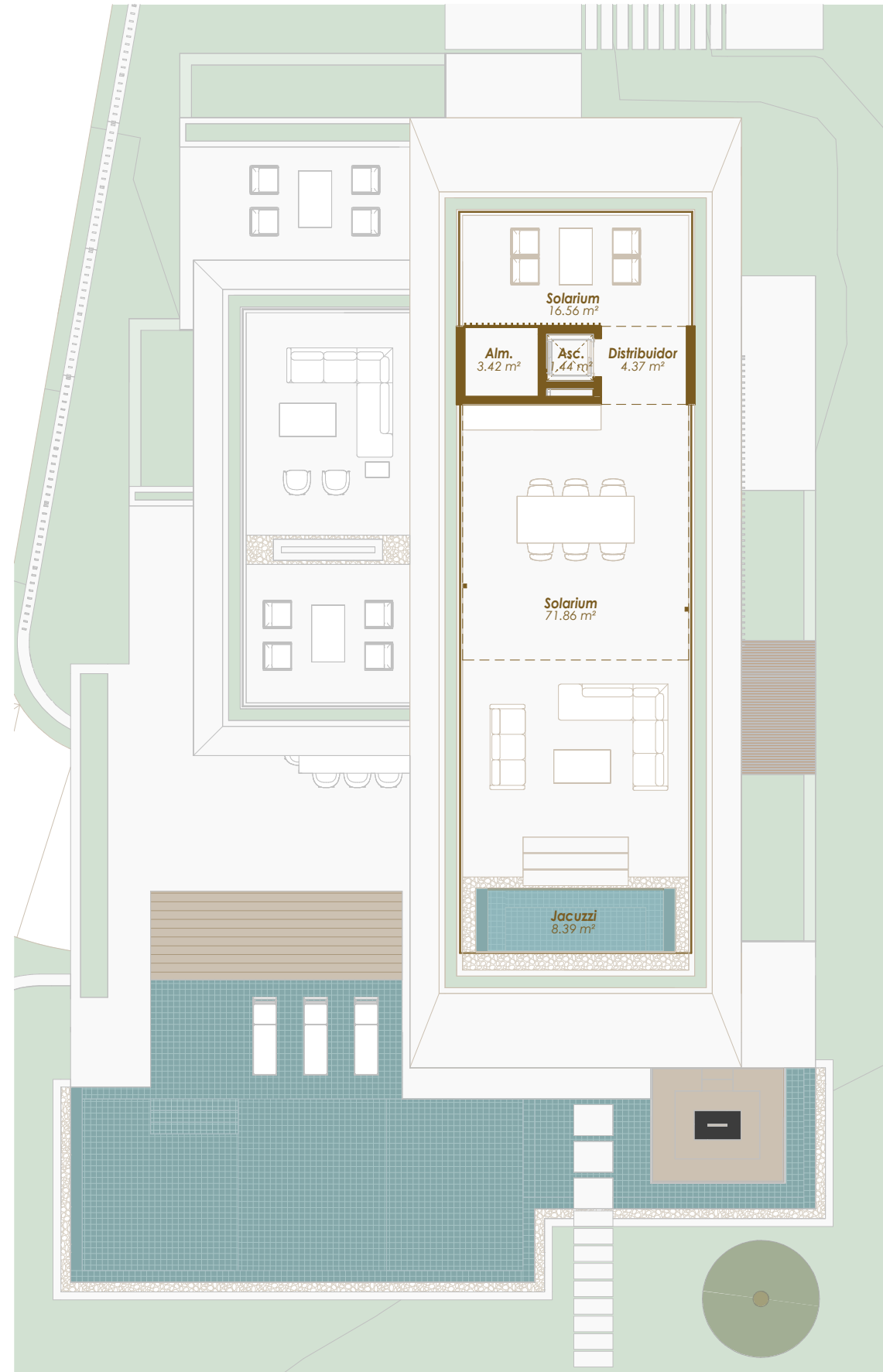
Planta Alta	
Construida Interior Sobre Rasante	138,64 m ²
Terraza Cubierta	15,95 m ²
Terraza Descubierta	63,85 m ²
Total	218,44 m²

SUPERFICIES PARCELA

SUPERFICIES ÚTILES

Planta Alta	
Interior	112,53 m ²
Exterior	67,00 m ²
Total	179,53 m²

VIVIENDA 2 · Solarium



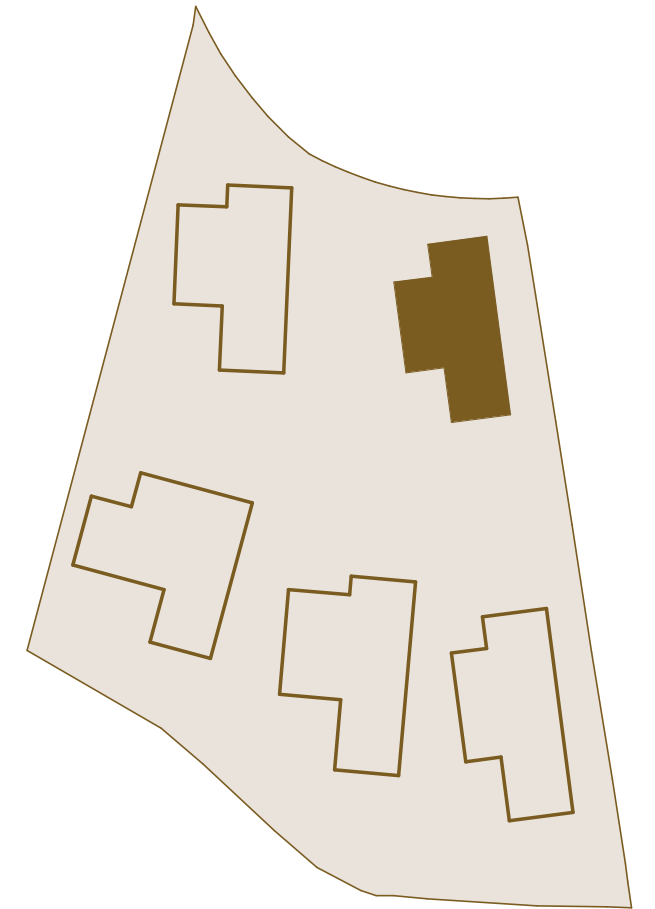
Escala 1:150

0 1 2 5 10 m



VIVIENDA 2 · Solarium

PLANO SITUACIÓN



SUPERFICIES CONSTRUIDAS

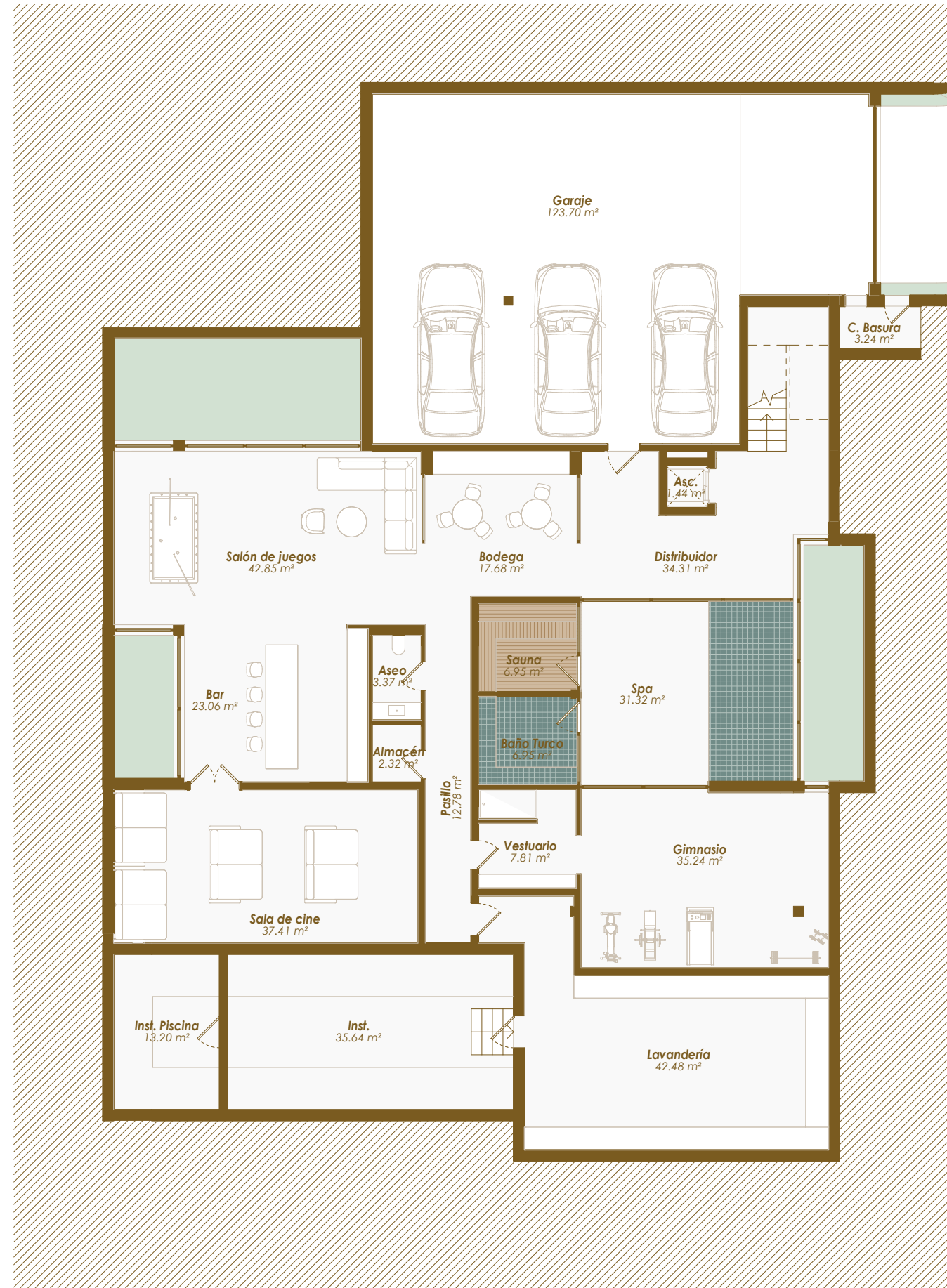
Terraza Cubierta	4,80 m ²
Planta Solarium	
Construida Interior Sobre Rasante	7,40 m ²
Terraza Descubierta	131,65 m ²
Total	143,85 m²

SUPERFICIES PARCELA

SUPERFICIES ÚTILES

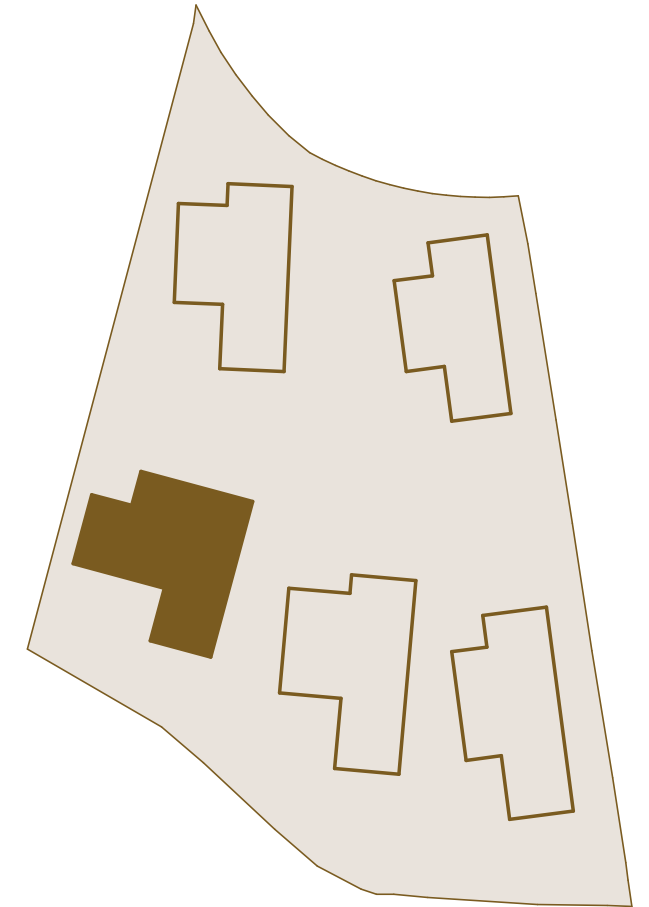
Planta Solarium	
Interior	1,44 m ²
Exterior	104,60 m ²
Total	106,04 m²

VIVIENDA 3 · Sótano



VIVIENDA 3 · Sótano

PLANO SITUACIÓN



SUPERFICIES CONSTRUIDAS

Planta Sótano	
Construida Interior Bajo Rasante	543,71 m ²
Total	543,71 m²

SUPERFICIES PARCELA

SUPERFICIES ÚTILES

Planta Sótano	
Interior	481,75 m ²
Total	481,75 m²

Escala 1:150

0 1 2 5 10 m



VIVIENDA 3 · Planta Baja



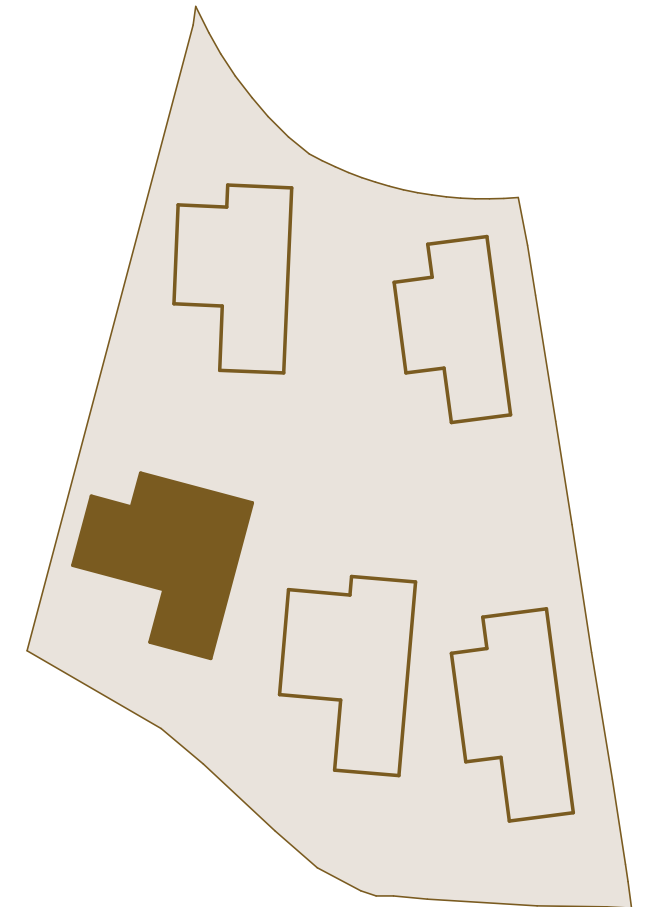
Escala 1:150

0 1 2 5 10 m



VIVIENDA 3 · Planta Baja

PLANO SITUACIÓN



SUPERFICIES CONSTRUIDAS

Planta Baja	
Construida Interior Sobre Rasante	198,24 m ²
Terraza Cubierta	86,63 m ²
Terraza Descubierta	74,74 m ²
Total	359,61 m²

SUPERFICIES PARCELA

Piscina	114,86 m ²
Jardín	546,89 m ²

SUPERFICIES ÚTILES

Planta Baja	
Interior	167,98 m ²
Exterior	239,36 m ²
Total	407,34 m²

VIVIENDA 3 · Planta Alta

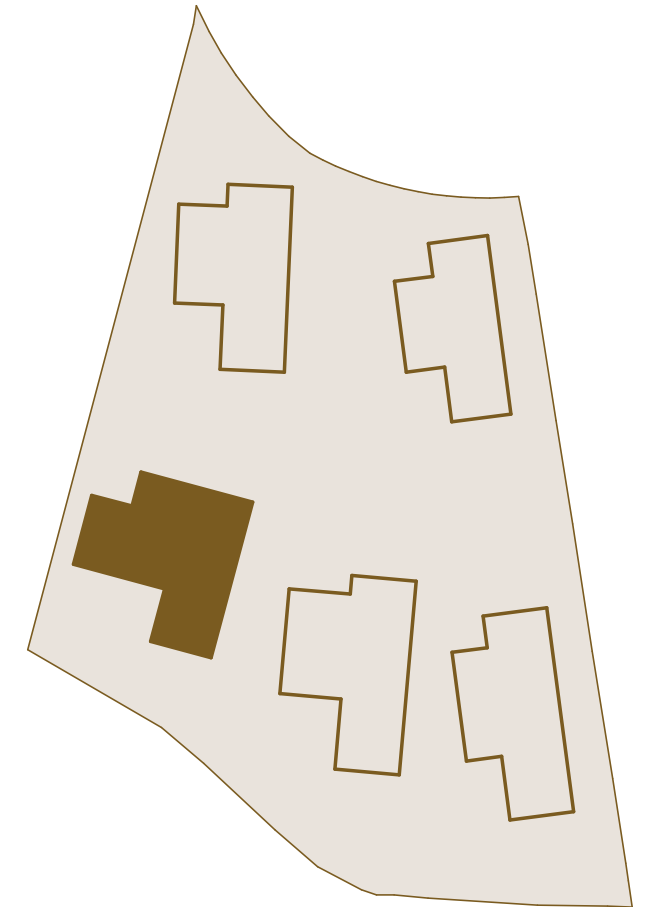


Escala 1:150



VIVIENDA 3 · Planta Alta

PLANO SITUACIÓN



SUPERFICIES CONSTRUIDAS

Planta Alta	
Construida Interior Sobre Rasante	149,25 m ²
Terraza Cubierta	34,22 m ²
Terraza Descubierta	58,78 m ²
Total	242,26 m²

SUPERFICIES PARCELA

SUPERFICIES ÚTILES

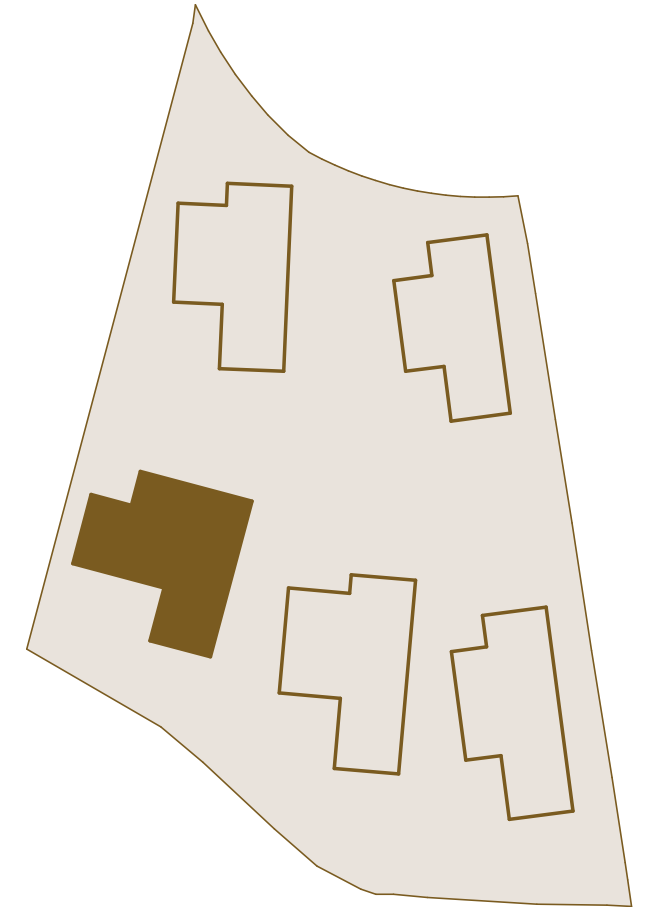
Planta Alta	
Interior	120,49 m ²
Exterior	79,99 m ²
Total	200,48 m²

VIVIENDA 3 · Solarium



VIVIENDA 3 · Solarium

PLANO SITUACIÓN



SUPERFICIES CONSTRUIDAS

Planta Solarium	
Construida Interior Sobre Rasante	7,60 m ²
Terraza Cubierta	4,60 m ²
Terraza Descubierta	160,13 m ²
Total	172,33 m²

SUPERFICIES PARCELA

SUPERFICIES ÚTILES

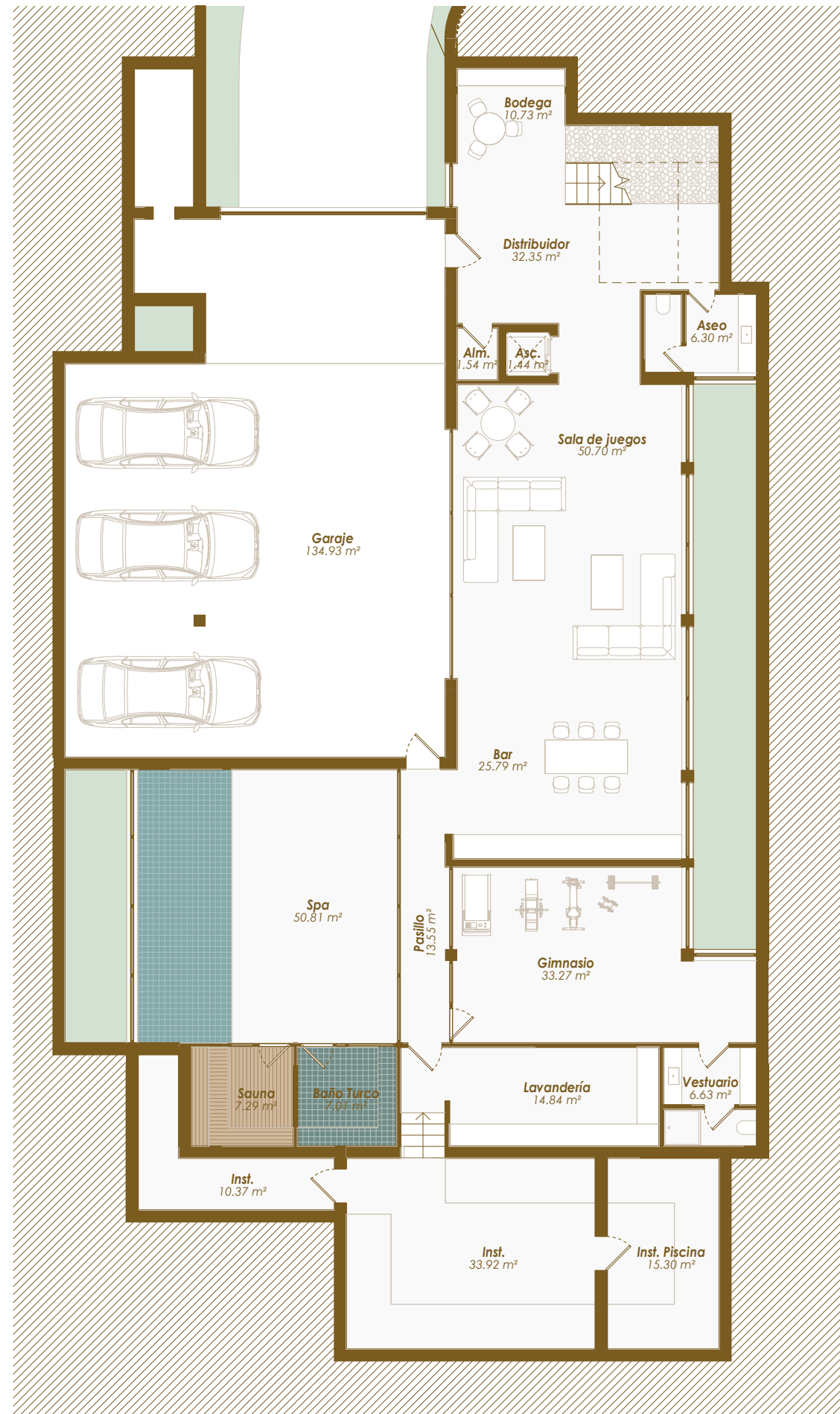
Planta Solarium	
Interior	1,44 m ²
Total	1,44 m²

Escala 1:150

0 1 2 5 10 m



VIVIENDA 4 · Sótano

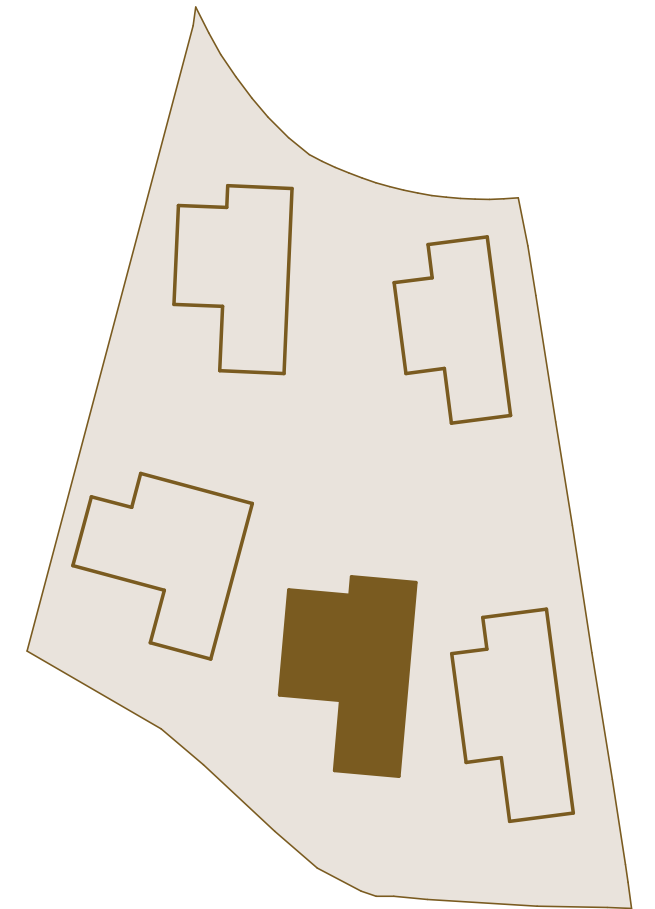


Escala 1:150



VIVIENDA 4 · Sótano

PLANO SITUACIÓN



SUPERFICIES CONSTRUIDAS

Planta Sótano	
Construida Interior Bajo Rasante	522,02 m ²
Total	522,02 m²

SUPERFICIES PARCELA

SUPERFICIES ÚTILES

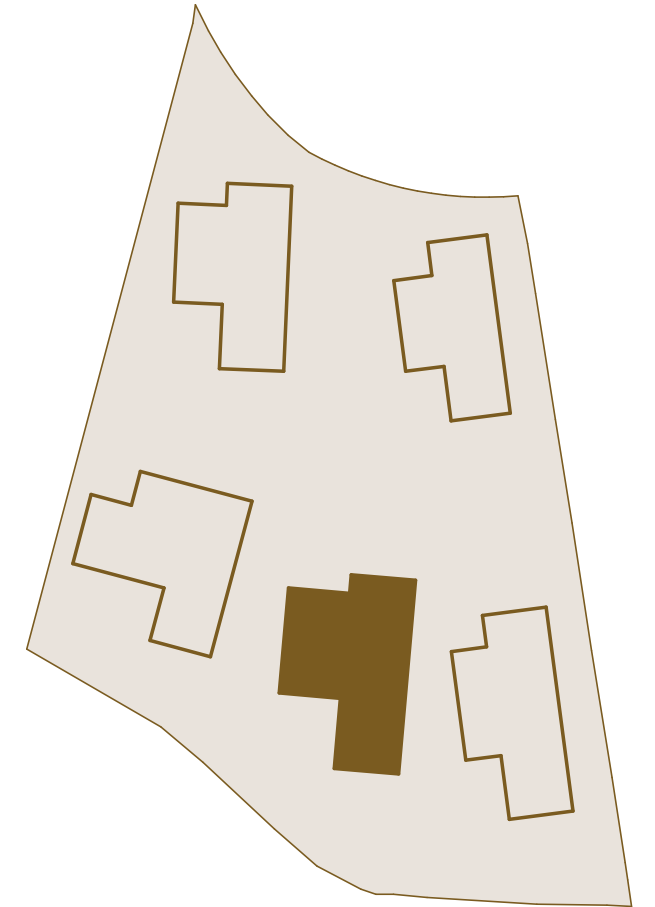
Planta Sótano	
Interior	462,68 m ²
Total	462,68 m²

VIVIENDA 4 · Planta Baja



VIVIENDA 4 · Planta Baja

PLANO SITUACIÓN



SUPERFICIES CONSTRUIDAS

Planta Baja	
Construida Interior Sobre Rasante	200,17 m ²
Terraza Cubierta	76,98 m ²
Terraza Descubierta	104,55 m ²
Total	381,69 m²

SUPERFICIES PARCELA

Piscina	115,57 m ²
Jardín	501,47 m ²

SUPERFICIES ÚTILES

Planta Baja	
Interior	177,23 m ²
Exterior	269,19 m ²
Total	446,42 m²

Escala 1:150

0 1 2 5 10 m



VIVIENDA 4 · Planta Alta



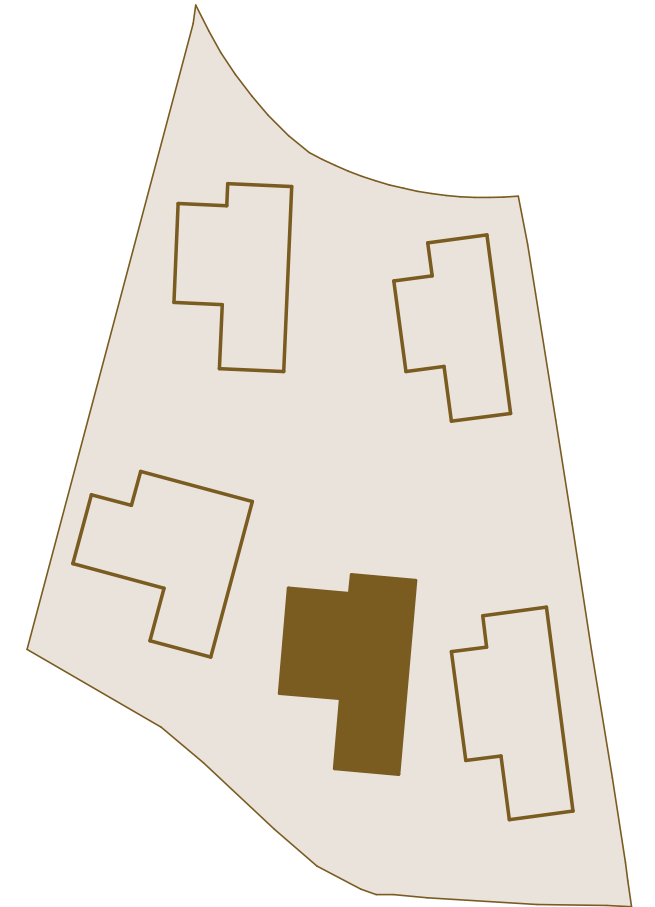
Escala 1:150

0 1 2 5 10 m



VIVIENDA 4 · Planta Alta

PLANO SITUACIÓN



SUPERFICIES CONSTRUIDAS

Planta Alta	
Construida Interior Sobre Rasante	145,87 m ²
Terraza Cubierta	15,58 m ²
Terraza Descubierta	75,04 m ²
Total	236,49 m²

SUPERFICIES PARCELA

SUPERFICIES ÚTILES

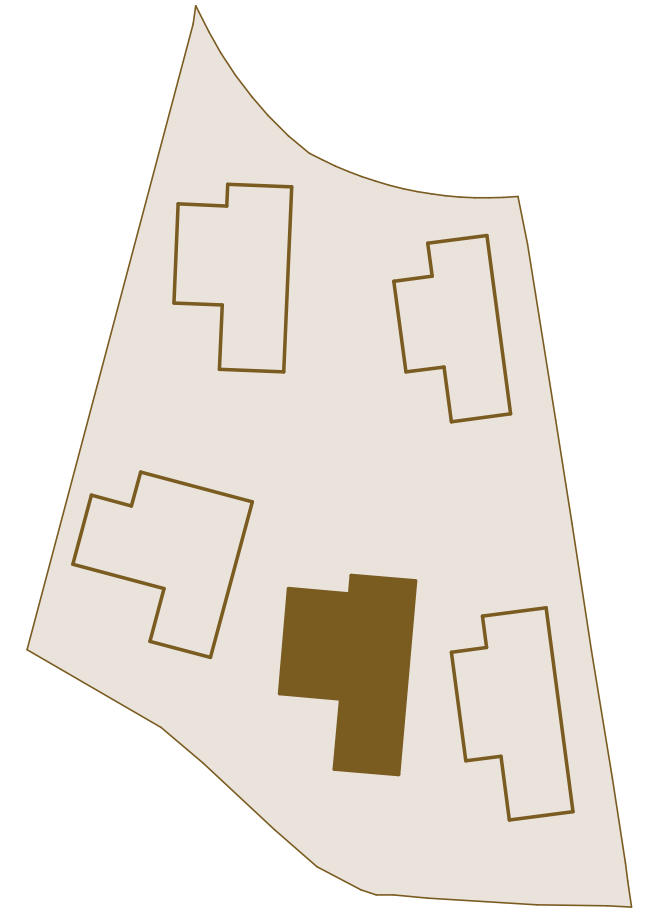
Planta Alta	
Interior	119,16 m ²
Exterior	77,21 m ²
Total	196,37 m²

VIVIENDA 4 · Solarium



VIVIENDA 4 · Solarium

PLANO SITUACIÓN



SUPERFICIES CONSTRUIDAS

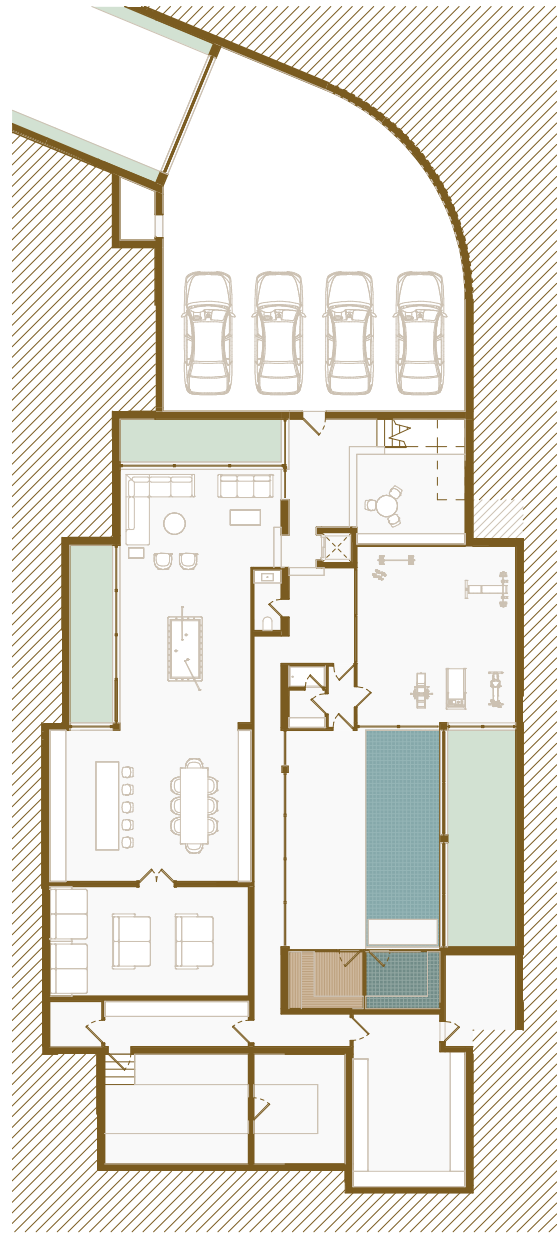
Planta Solarium	
Construida Interior Sobre Rasante	5,40 m ²
Terraza Cubierta	6,80 m ²
Terraza Descubierta	137,95 m ²
Total	150,15 m²

SUPERFICIES PARCELA

SUPERFICIES ÚTILES

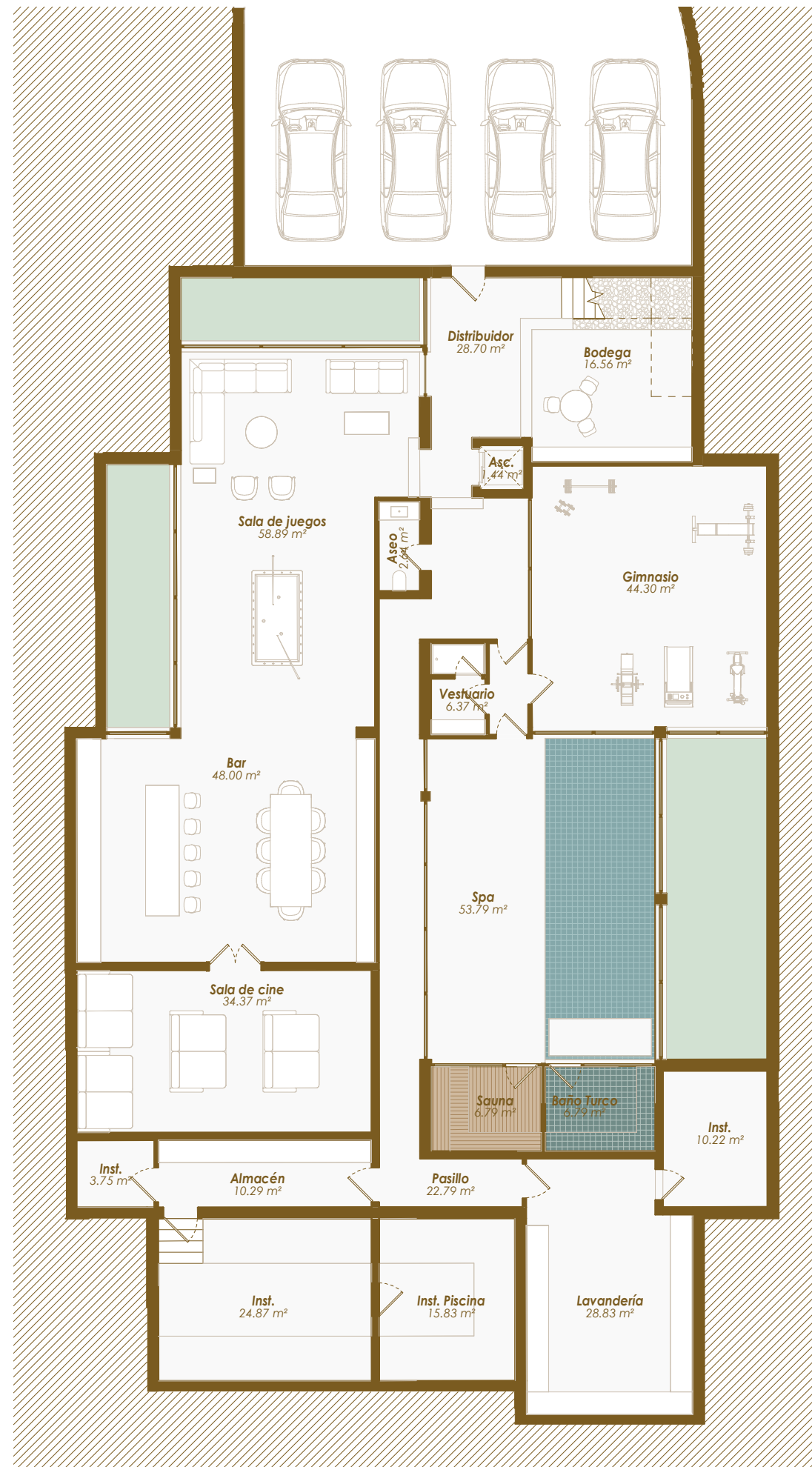
Planta Solarium	
Interior	9,04 m ²
Exterior	102,00 m ²
Total	111,04 m²

VIVIENDA 5 · Sótano



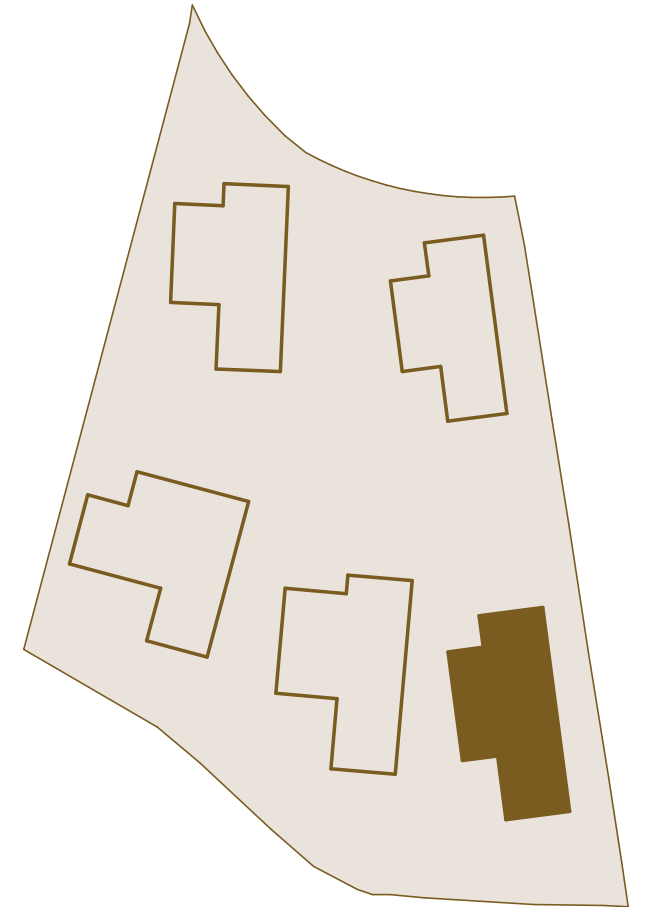
Escala 1:300

Escala 1:150



VIVIENDA 5 · Sótano

PLANO SITUACIÓN



SUPERFICIES CONSTRUIDAS

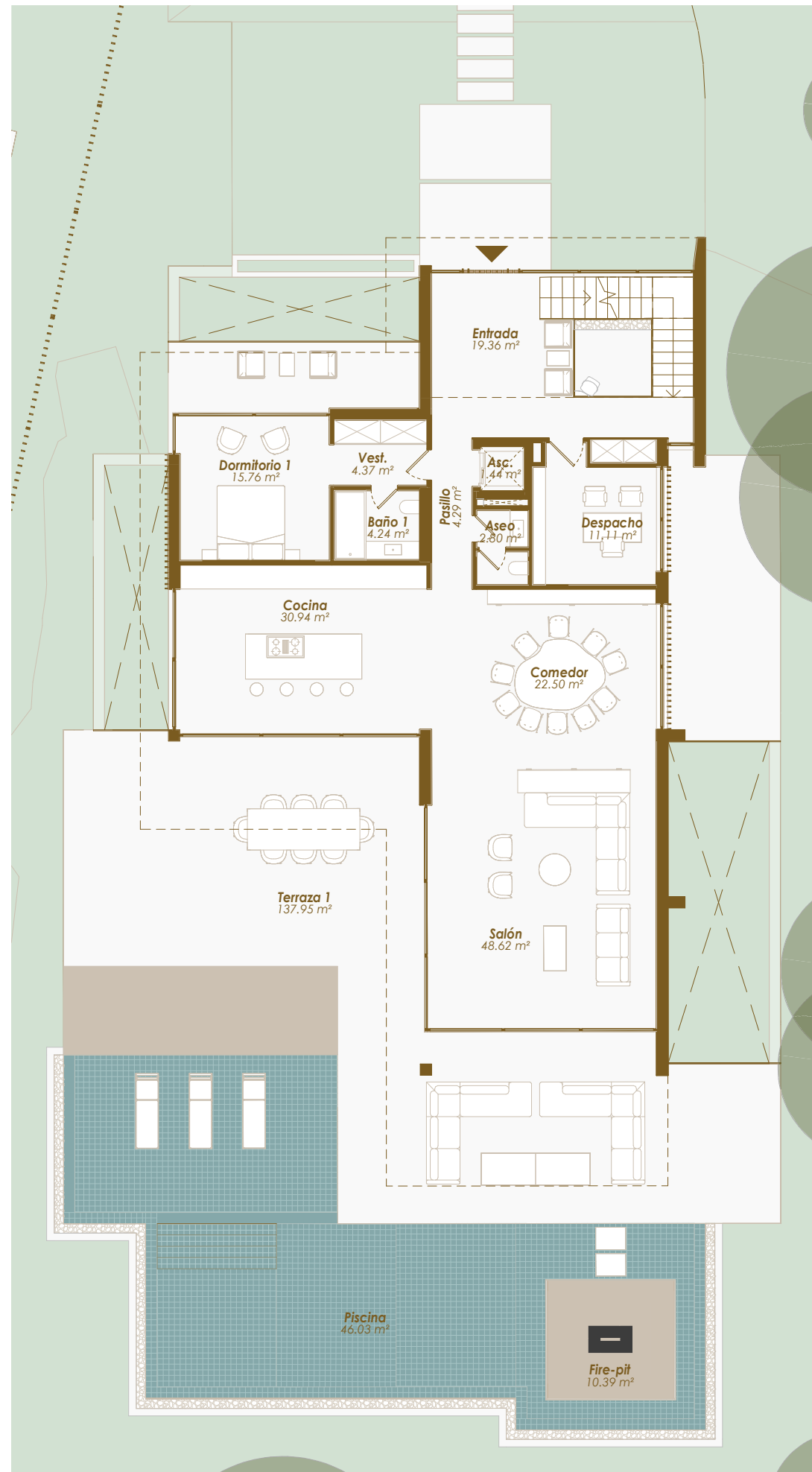
Planta Sótano	
Construida Interior Bajo Rasante	635,33 m ²
Total	635,33 m²

SUPERFICIES PARCELA

SUPERFICIES ÚTILES

Planta Sótano	
Interior	563,09 m ²
Total	563,09 m²

VIVIENDA 5 · Planta Baja

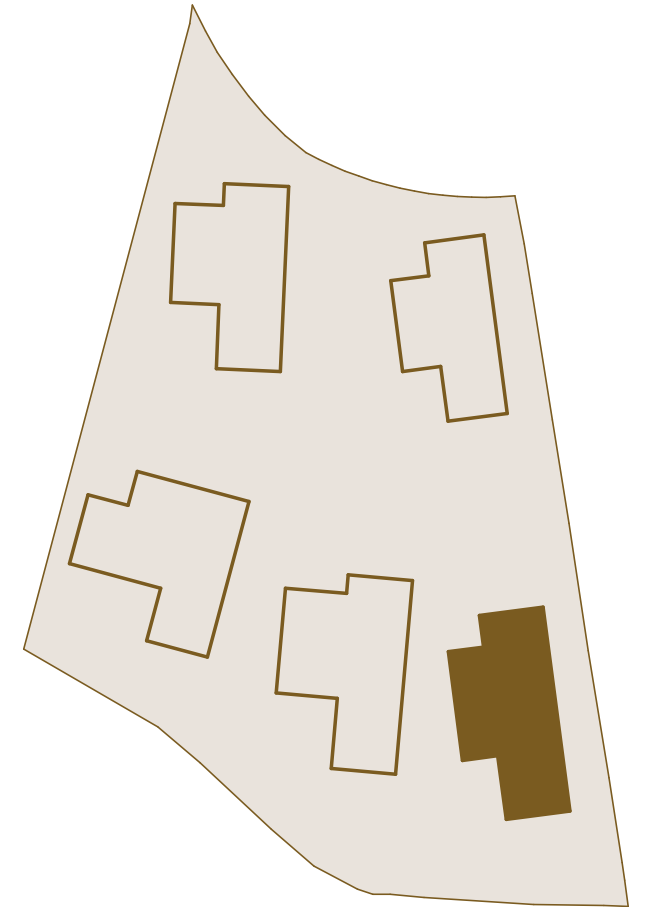


Escala 1:150



VIVIENDA 5 · Planta Baja

PLANO SITUACIÓN



SUPERFICIES CONSTRUIDAS

Planta Baja	
Construida Interior Sobre Rasante	199,50 m ²
Terraza Cubierta	76,36 m ²
Terraza Descubierta	116,69 m ²
Total	392,54 m²

SUPERFICIES PARCELA

Piscina	92,01 m ²
Jardín	798,46 m ²

SUPERFICIES ÚTILES

Planta Baja	
Interior	165,44 m ²
Exterior	244,27 m ²
Total	409,71 m²

VIVIENDA 5 · Planta Alta



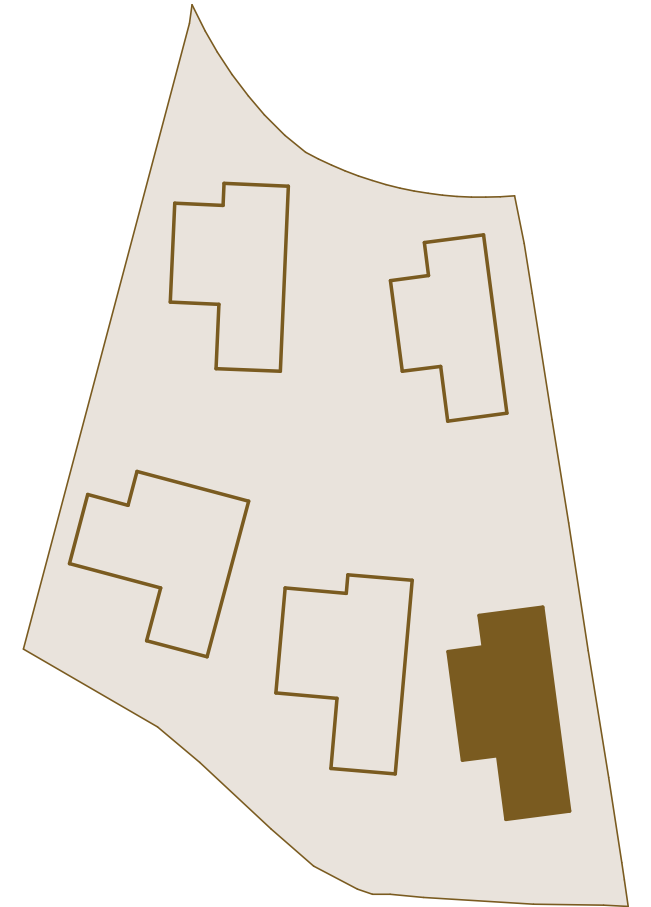
Escala 1:150

0 1 2 5 10 m



VIVIENDA 5 · Planta Alta

PLANO SITUACIÓN



SUPERFICIES CONSTRUIDAS

Planta Alta	
Construida Interior Sobre Rasante	145,86 m ²
Terraza Cubierta	15,58 m ²
Terraza Descubierta	75,04 m ²
Total	236,48 m²

SUPERFICIES PARCELA

SUPERFICIES ÚTILES

Planta Alta	
Interior	118,93 m ²
Exterior	77,00 m ²
Total	195,93 m²

VIVIENDA 5 · Solarium

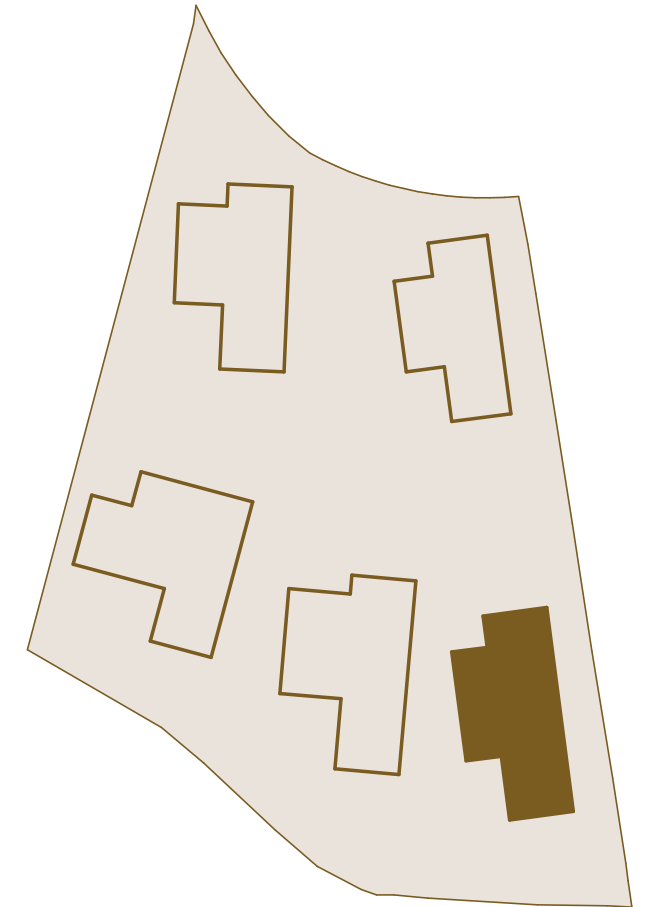


Escala 1:150



VIVIENDA 5 · Solarium

PLANO SITUACIÓN



SUPERFICIES CONSTRUIDAS

Planta Solarium	
Construida Interior Sobre Rasante	5,40 m ²
Terraza Cubierta	6,80 m ²
Terraza Descubierta	137,95 m ²
Total	150,15 m²

SUPERFICIES PARCELA

SUPERFICIES ÚTILES

Planta Solarium	
Interior	3,06 m ²
Exterior	108,08 m ²
Total	111,14 m²