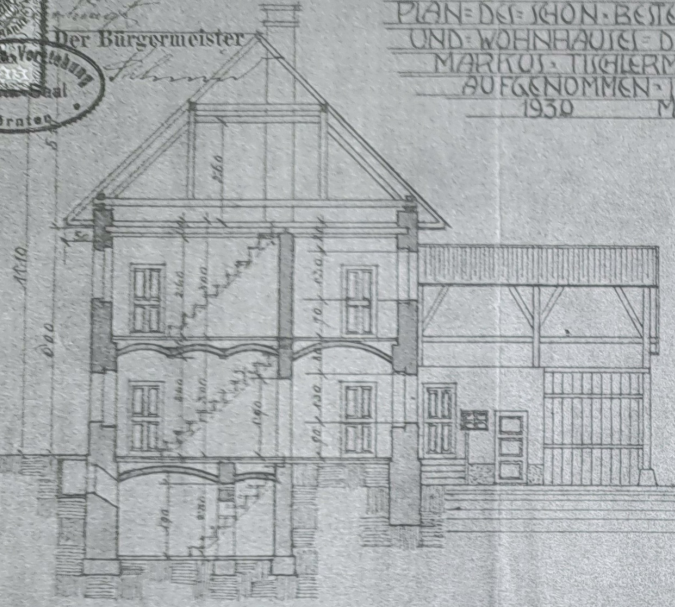
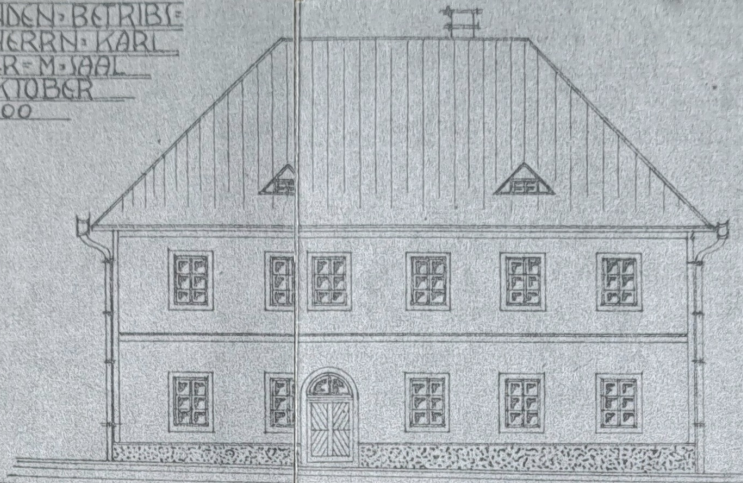




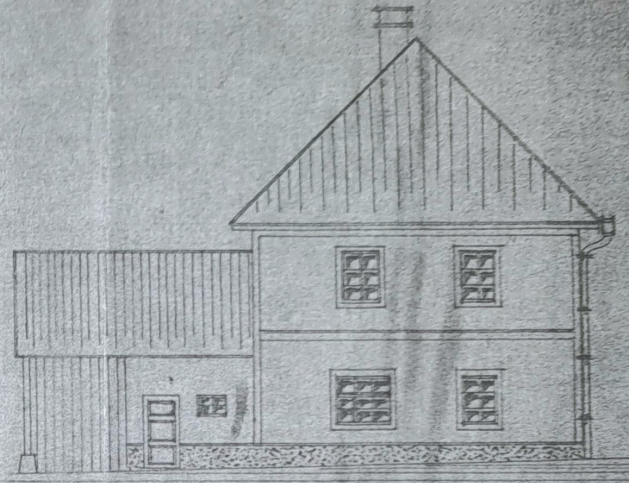
PLAN DES SCHON-BESTEHENDEN BETRIEBS-
 UND-WOHNHAUSES DES HERRN KARL
 MARKUS TUCHLERMEISTER-M. SAAL
 AUFGENOMMEN IM OKTOBER
 1930 M 1:100



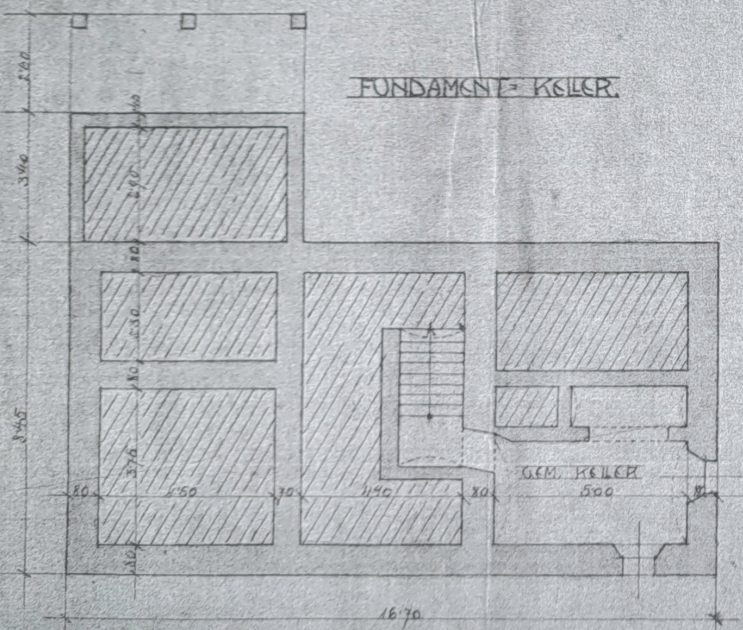
SCHNITT AB



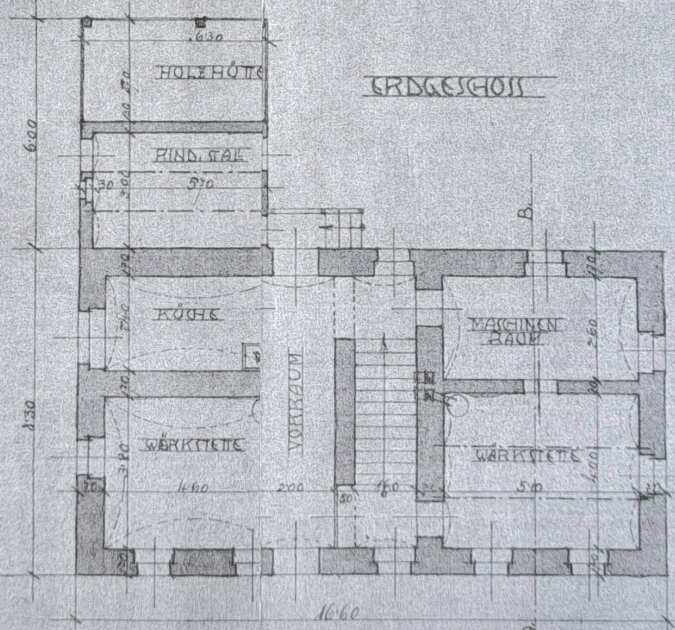
VORFRONT



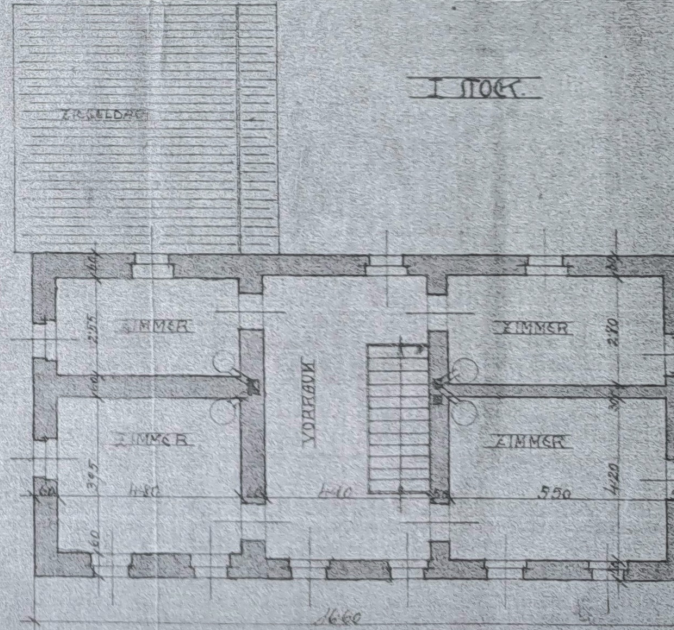
WESTFRONT



FUNDAMENT- KELLER



ERDGESCHOSS



I. STOCK

MARIA SAAL IM OKTOBER 1930.

Ferdinand Kogelnig
 Maurermeister
 Maria Saal, Kärnten