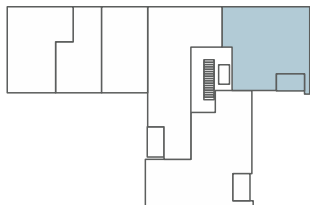
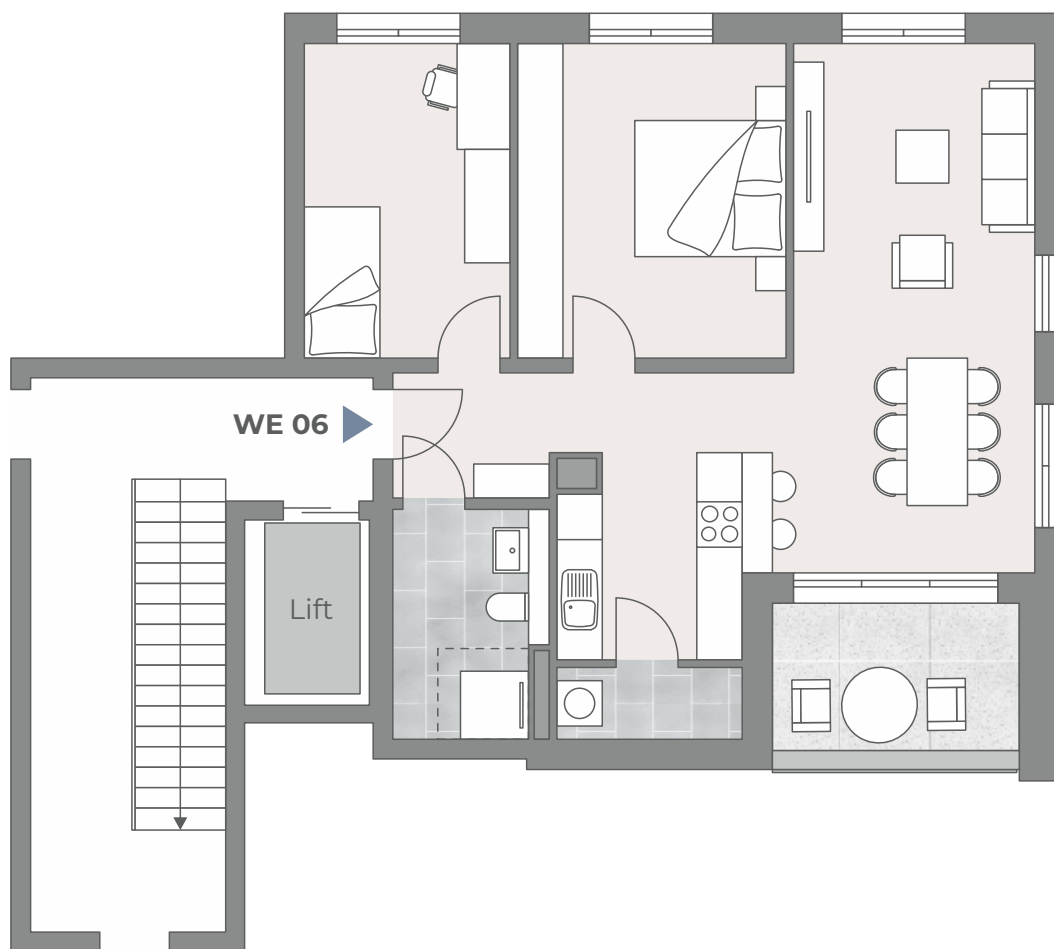


06 3 Zimmer 1. Obergeschoss



barrierefrei



Südwest-Ansicht



| | |
|---------------------|----------------------|
| Wohnen/Essen/Kochen | 32,46 m ² |
| Schlafen | 14,77 m ² |
| Zimmer | 11,32 m ² |
| Bad | 5,95 m ² |
| Abstellraum | 2,33 m ² |
| Flur | 4,16 m ² |
| Loggia (½) | 3,22 m ² |

Wohnfläche **74,21 m²**

