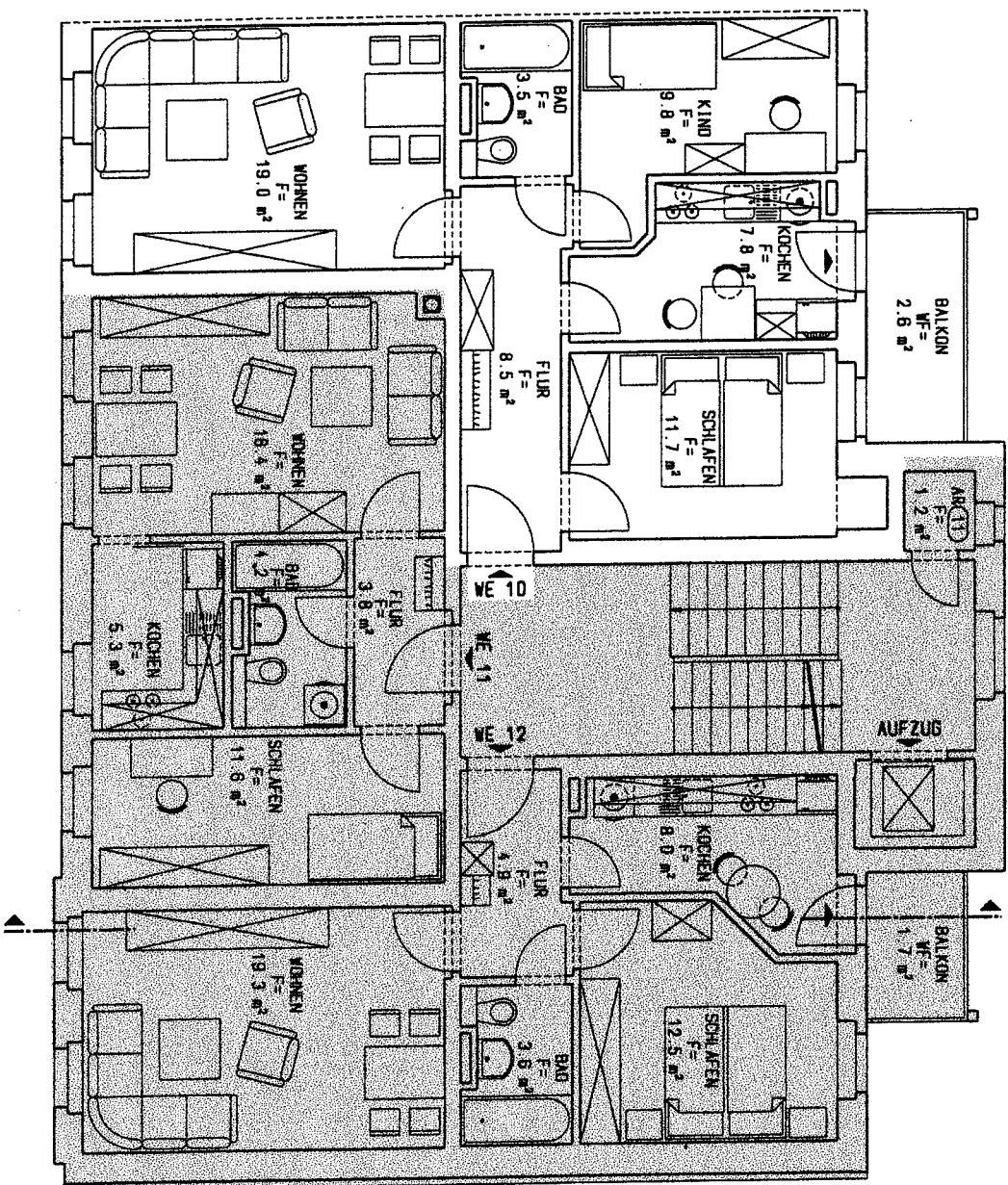


### 3. OBERGESCHOSS - WOHNUNG 10



#### WOHNUNG 10

|          |                     |
|----------|---------------------|
| Wohnen   | 19,00m <sup>2</sup> |
| Schlafen | 11,70m <sup>2</sup> |
| Kind     | 9,80m <sup>2</sup>  |
| Kochen   | 7,80m <sup>2</sup>  |
| Flur     | 8,50m <sup>2</sup>  |
| Balkon   | 2,60m <sup>2</sup>  |
| Bad/WC   | 3,50m <sup>2</sup>  |
| Gesamt   | 62,90m <sup>2</sup> |