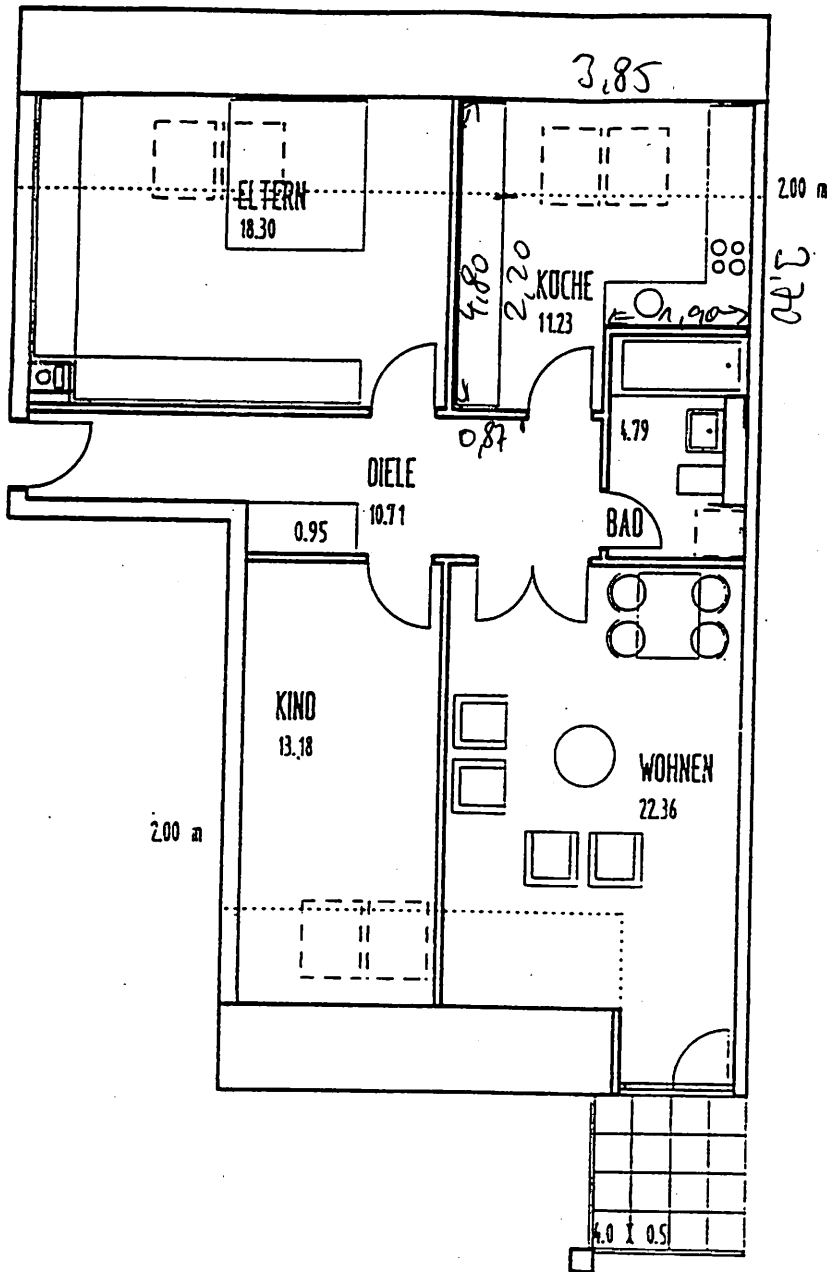
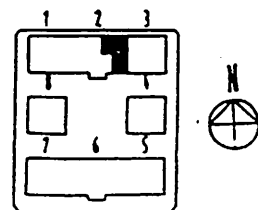
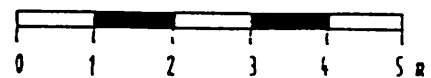


Bauvorhaben Berliner-Strasse Mahlow Ulmenhof



	Netto-Wohn-und Wohn- Fläche m²	Nutz- Fläche m²
Wohnen	22,36	22,36
Schlafen	18,30	18,30
Kind	13,18	13,18
Küche	11,23	11,23
Bad	4,79	4,79
Diele	10,71	10,71
Abstell	0,95	0,95
Balkon	2,00	4,00
Gesamt	83,52	85,52



Dachgeschoss