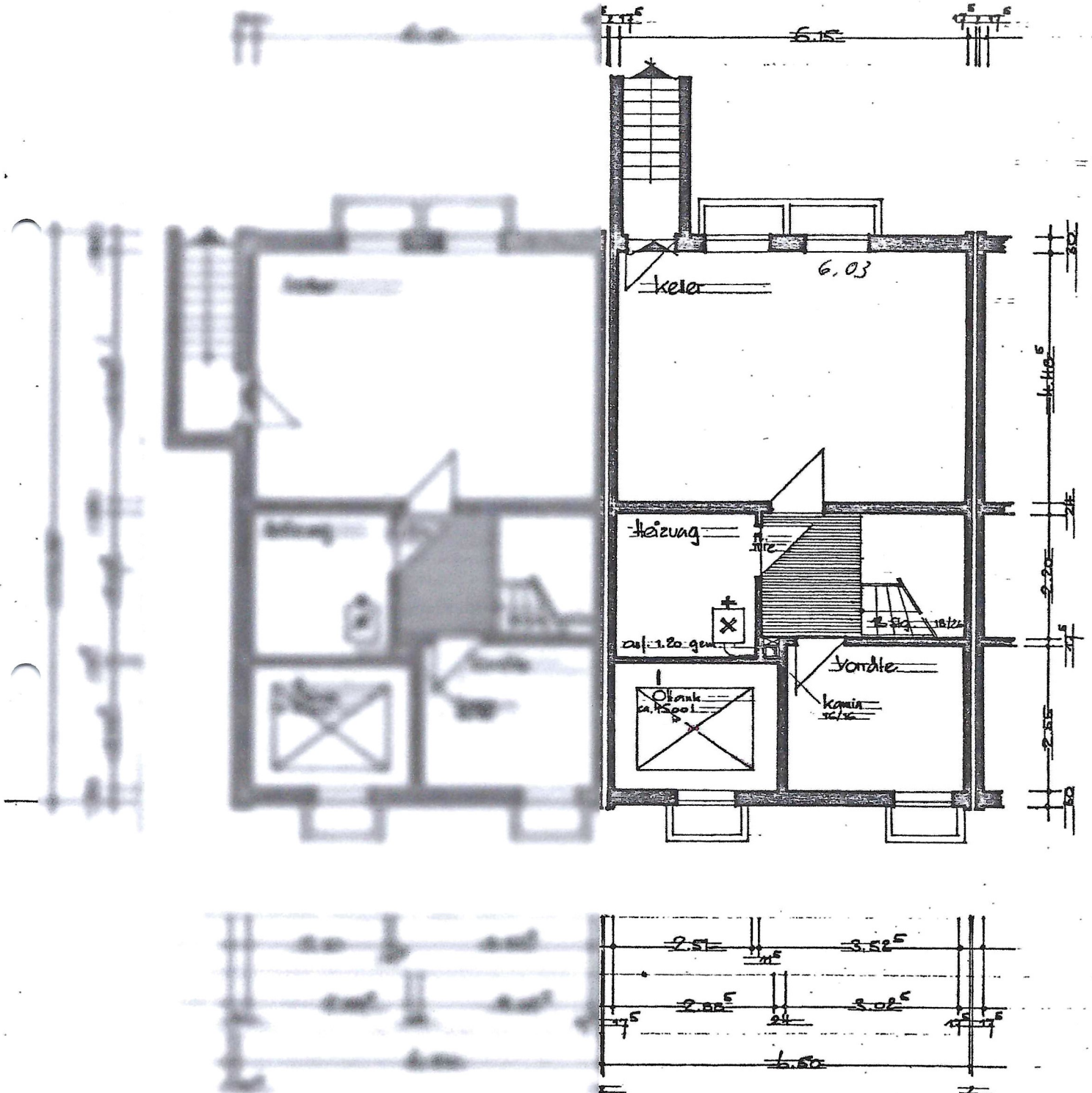


# S.T. GUNDEKAR-WERK

## EINFAM.-REIHENHÄUSER IN STEIN

1:100

### KELLER



PLANUNG: ARCHITEKTURBÜRO NÜSSLER

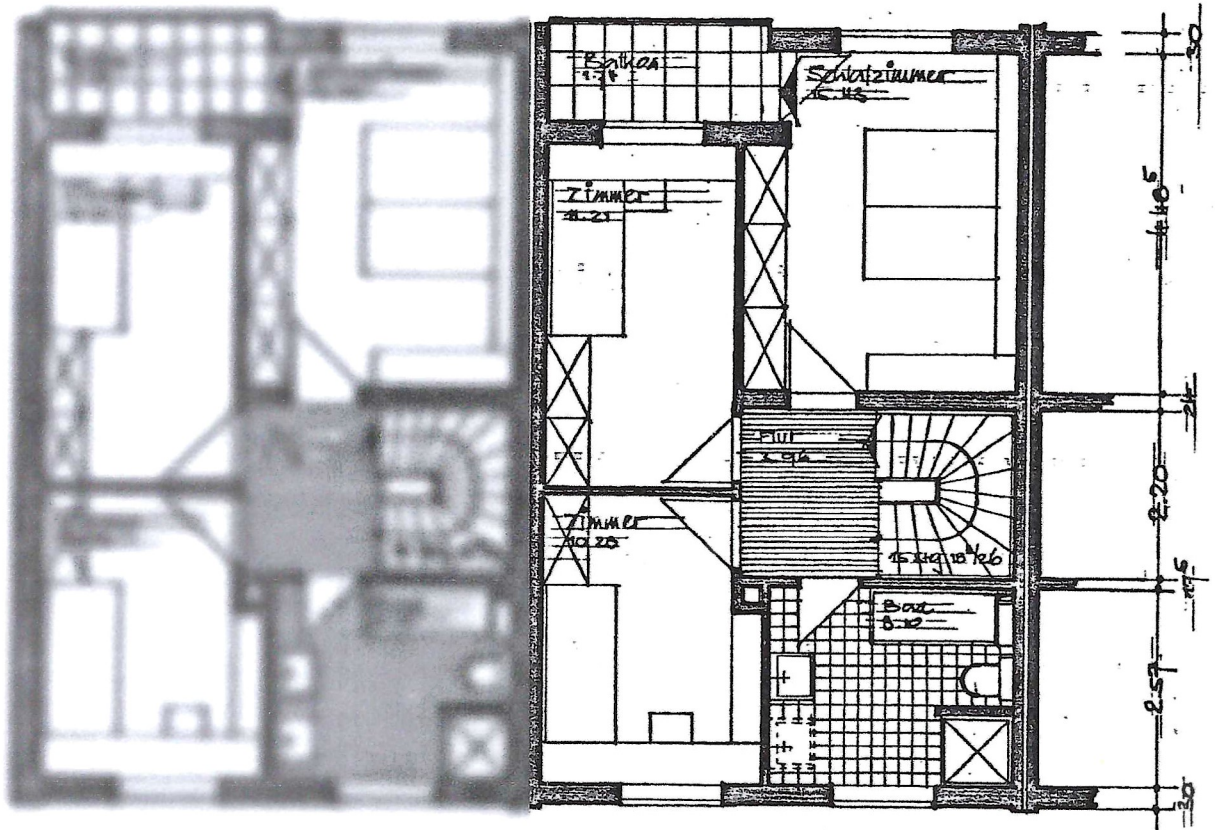
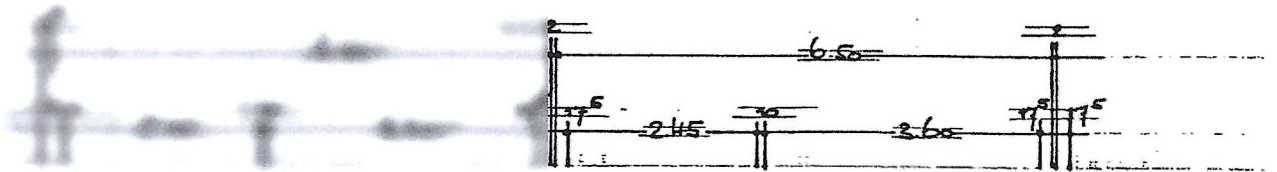


ST. GUNDEKAR-WERK

EINFAM.-REIHENHÄUSER IN STEIN

1:100

OBERGESCHOSS



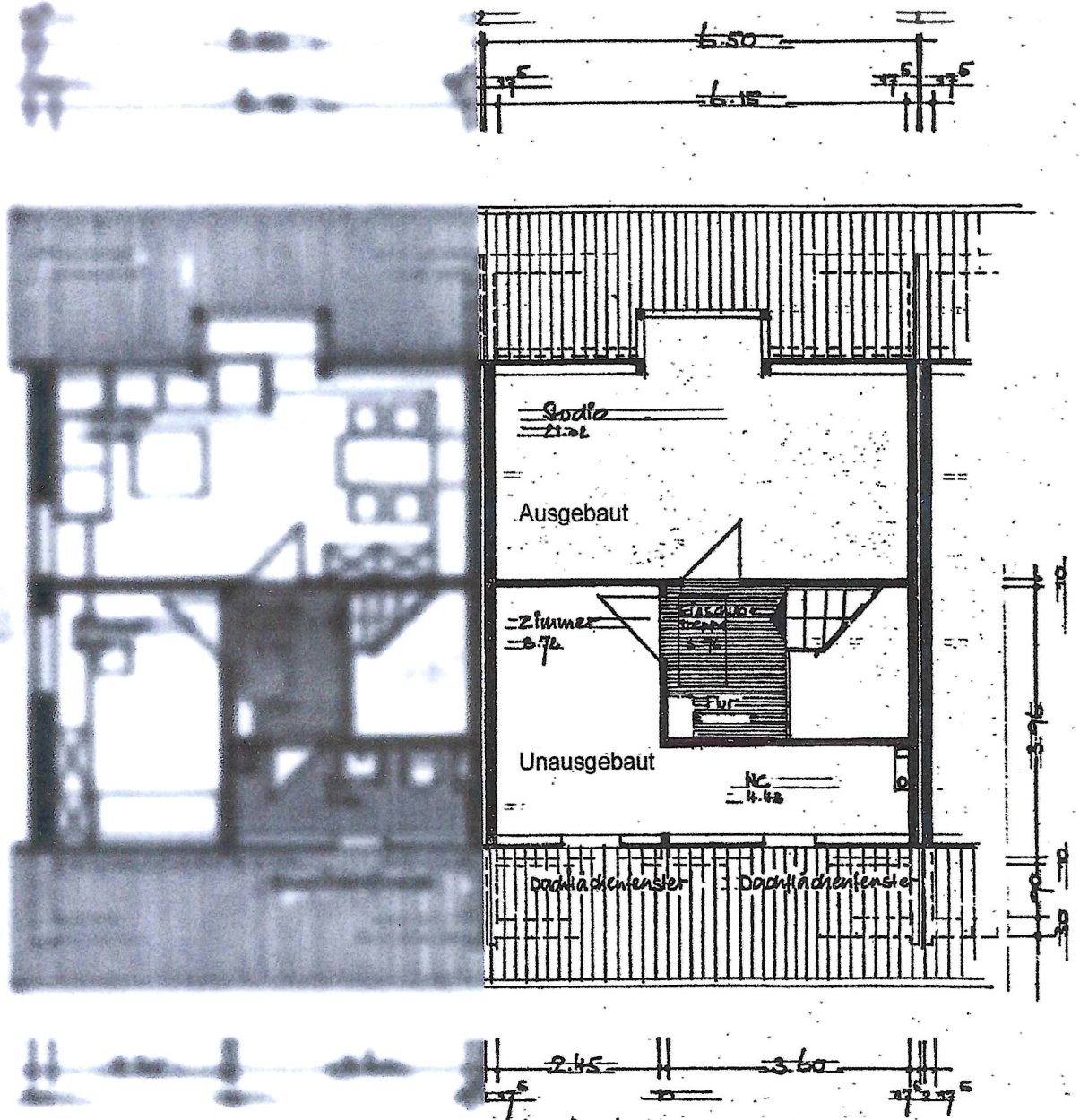
PLANUNG: ARCHITEKTURBÜRO NÜSSLER.

S T • G U N D E K A R - W E R K

E I N E M - R E I H E N H Ä U S E R I N S T E I N

M 1:100

D A C H G E S C H I S S ( S O N D E R W U N S C H )



P L A N U N G : A R C H I T E K T U R - B I R O - N Ü S S L E R