



SKY PARK



# WELCOME TO **SKYPARK**

A brand new luxury contemporary development of 52 spacious & luxury fitted garden apartments and penthouses situated on the hillside with lovely panoramic sea & mountain views.

Skypark benefits from a large communal pool, gardens, fitness center & cafe.

Directly opposite Skypark is the Esentepe golden beach & supermarket & is less than 10 minutes from the world class Korineum golf, tennis & beach club.

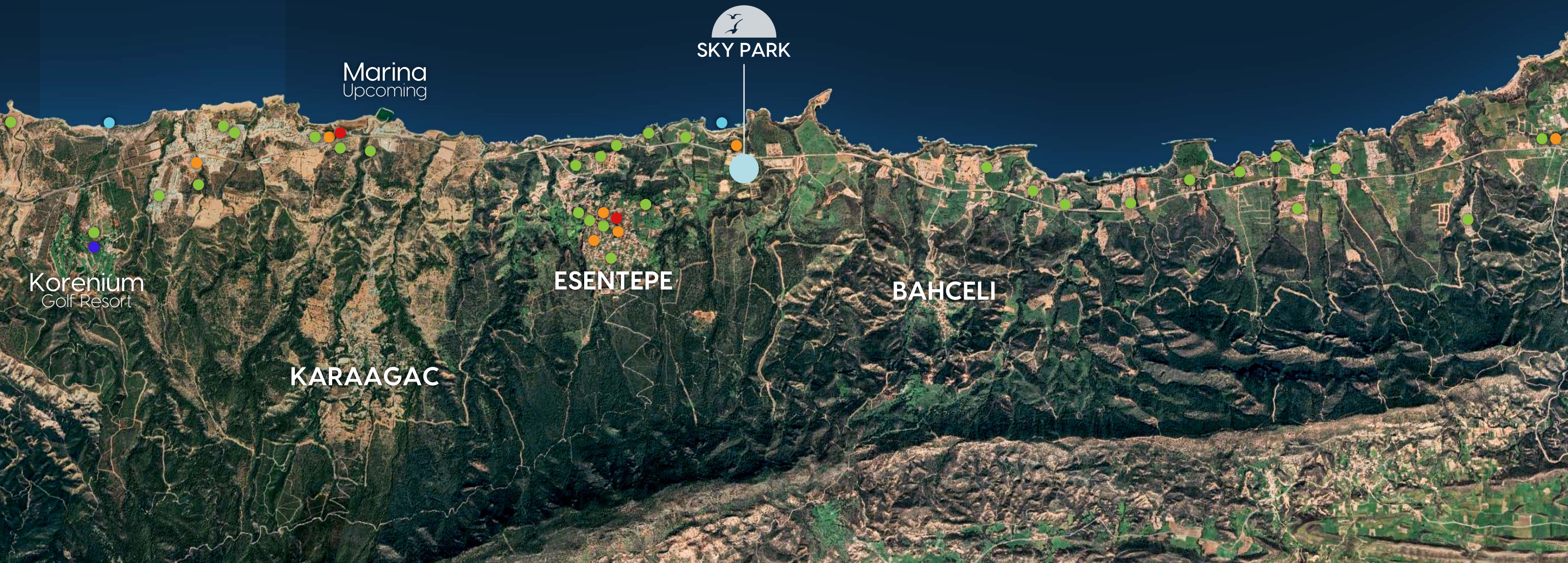




# LOCATION

## LEGEND

- Restaurants & Bars
- Markets
- Pharmacies
- Hotels
- Beaches





# SITE PLAN

- 1 Communal Pool & Sun Bathing Area
- 2 Cafe & Fitness Center
- 3 Landscaped Gardens & Children's Area



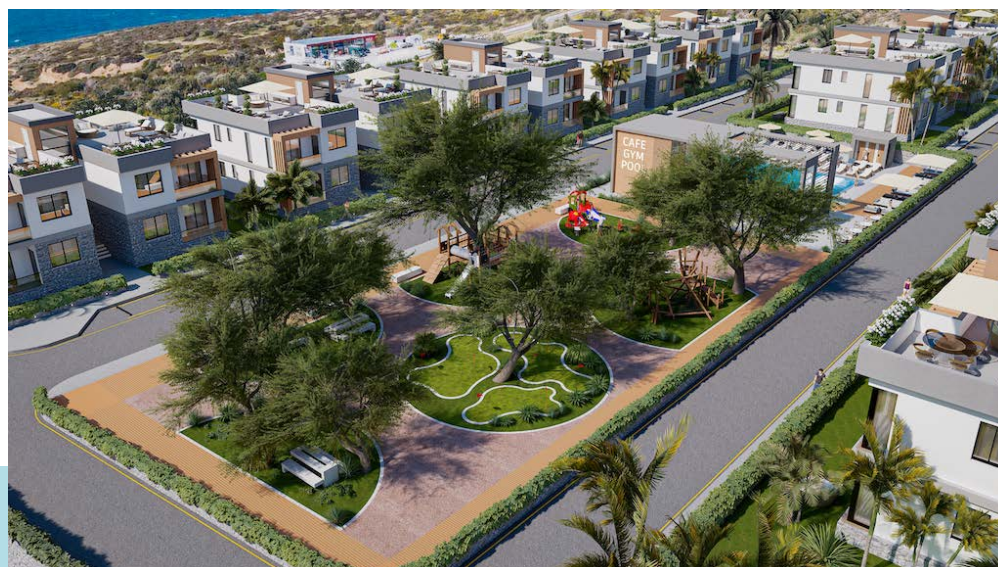




# LUXURY SPECIFICATIONS

SKY PARK is a high quality construction with many superior finishes and fittings, including:

- 3.1m ceiling height with inset lighting
- Central VRF system with air outlets within the ceiling
- Wall features to the dining, living & master bedroom
- LED lighting features
- Extra-large tiling in natural earth colours.
- Inset toilets & surface mounted sinks
- High quality door & window fittings
- Soft closing wardrobes & drawers
- Integrated white goods
- Walk-in showers
- Generous landscaping







# THE RESIDENCES





# 2 BEDROOM GARDEN



2 Bedrooms



2 Bathrooms



95 m<sup>2</sup>





# 2 BEDROOM PENTHOUSE



2 Bedrooms



2 Bathrooms



95 m<sup>2</sup>



90 m<sup>2</sup> Rooftop





# INTERIOR

EXAMPLES







SKY PARK







COMPLETION IN DECEMBER 2024