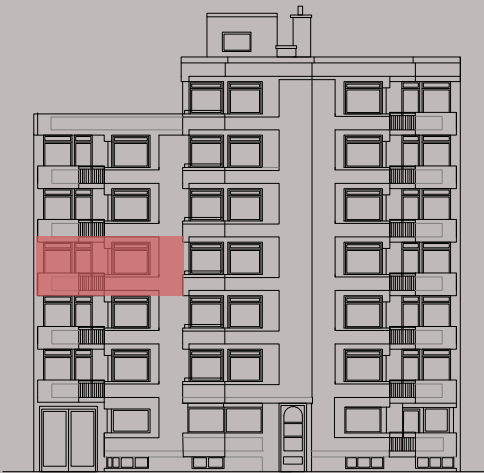


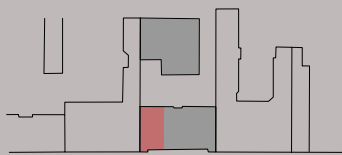
VORDERHAUS 3.OBERGESCHOSS

WE09/3.OBERGESCHOSS

| | |
|---------------|----------------------------|
| Küche | 7.84 m ² |
| Zimmer 1 | 22.13 m ² |
| Zimmer 2 | 17.85 m ² |
| Zimmer 3 | 12.97 m ² |
| Zimmer 4 | 7.15 m ² |
| AR 1 | 0.71 m ² |
| AR 2 | 0.64 m ² |
| Bad | 5.75 m ² |
| Flur 1 | 9.53 m ² |
| Flur 2 | 1.60 m ² |
| WC | 1.79 m ² |
| Loggia | 2.86 m ² |
| Gesamt | 91.51 m² |



Straßenansicht



Eislebener Straße

Lageplan

