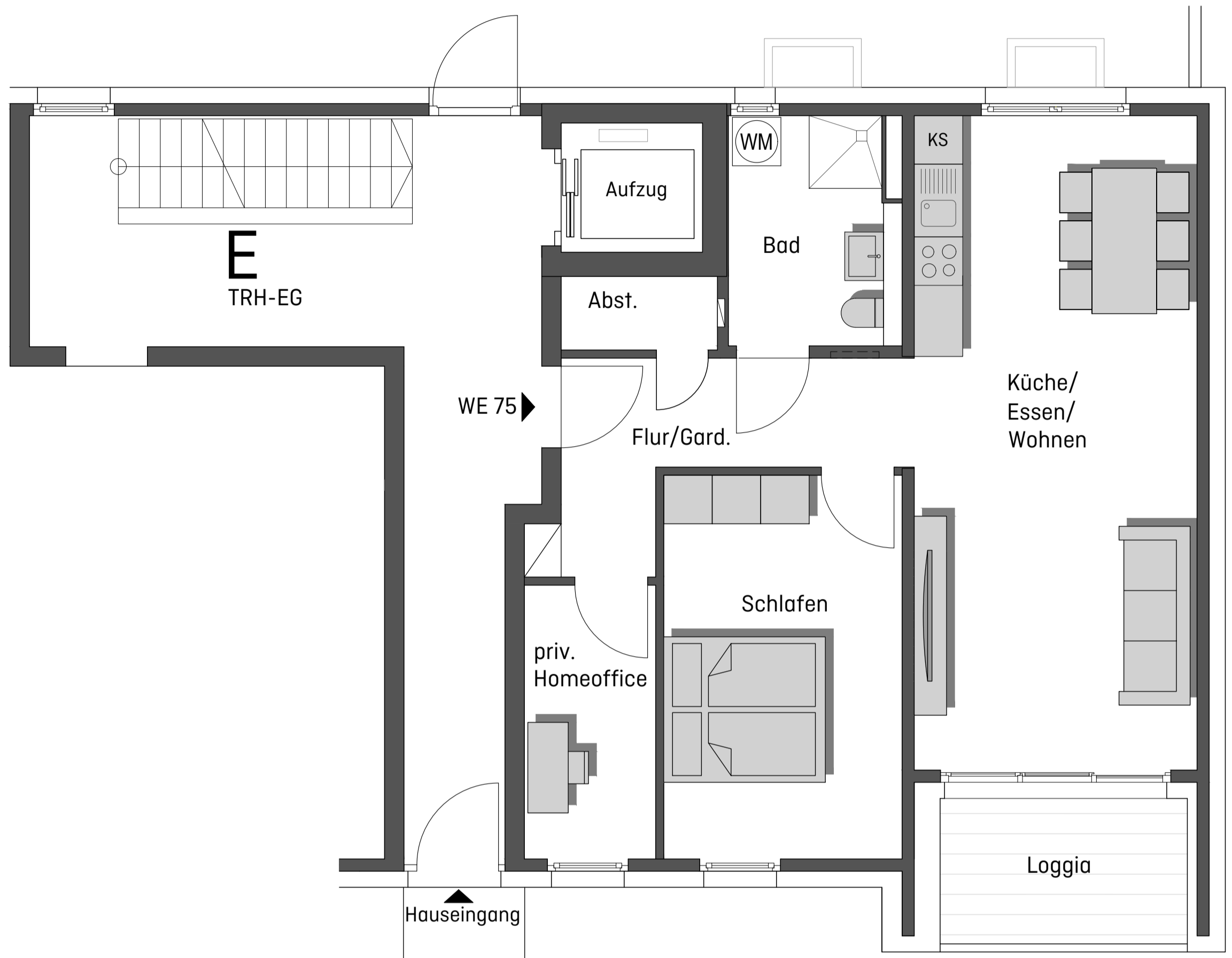


WOHNSTOLZ

AUGSBURG OBERHAUSEN

Reutlinger Straße 38 und 38a

Neubau 2 MFH (E+F) + TG



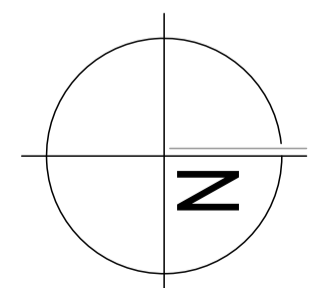
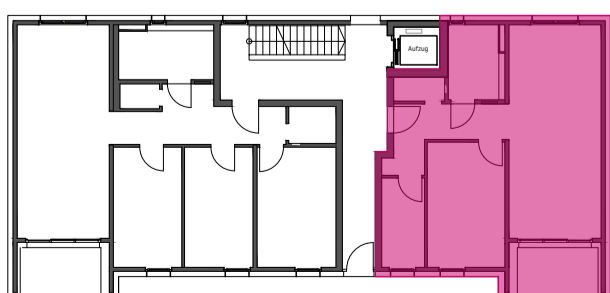
GRUNDRISS

WE 75

Erdgeschoss

2,5 Zi.-Whg.

Flur/ Gard.	7,79 m ²
Abst.	1,76 m ²
Bad/ WC	5,76 m ²
Wohnen/Essen/Küche	28,35 m ²
Schlafen	14,01 m ²
privates Homeoffice	5,51 m ²
Loggia 25%	1,29 m ²
ges. Wohnfläche	64,47 m²



M. 1:100 - A4

0 0,5 1,0 2,5 5,0