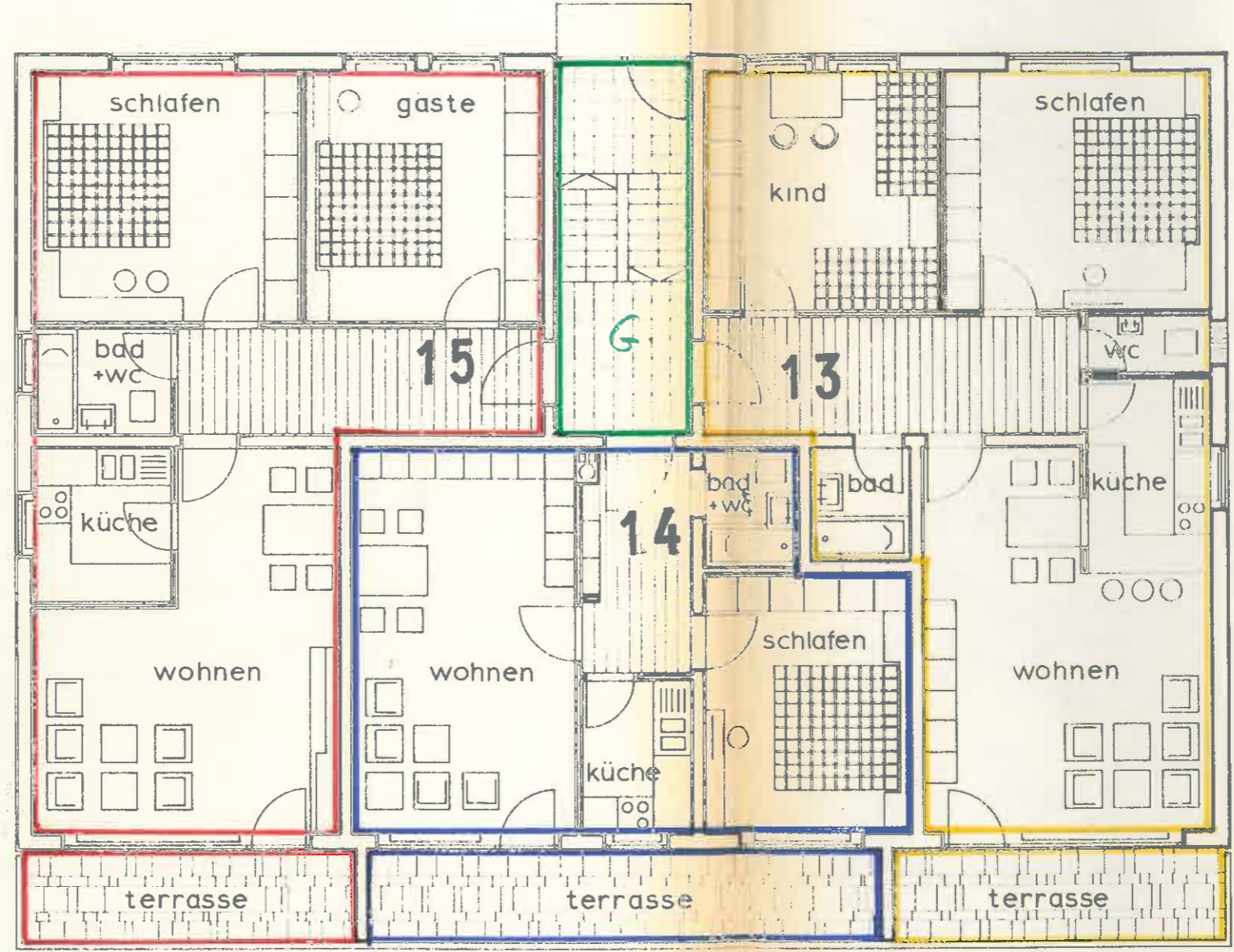


30 4.38⁵ 6 3.91⁵ 24 2.20 24 3.91⁵ 6 4.38⁵ 30
 30 2.26 11⁵ 5.98⁵ 24 2.20 24 6.24⁵ 11⁵ 2.00 30

13.00
 1.60 10 1.50 30 3.66 11⁵ 2.50 24 1.70 11⁵ 4.07 30



30 2.54⁵ 11⁵ 3.61⁵ 24 5.88⁵ 30
 30 4.26 24 1.77⁵ 24 1.89⁵ 11⁵ 3.87⁵ 30
 30 4.26 3.13⁵ 11⁵ 90 11⁵ 3.87⁵ 30

erd- u. obergeschoss

30 2.26 11⁵ 2.63⁵ 24 3.67⁵ 11⁵ 1.76 24 1.58 24 1.58 24 2.60⁵ 11⁵ 2.00 30
 10 5.45 24 8.42 24 5.45 10
 20.00