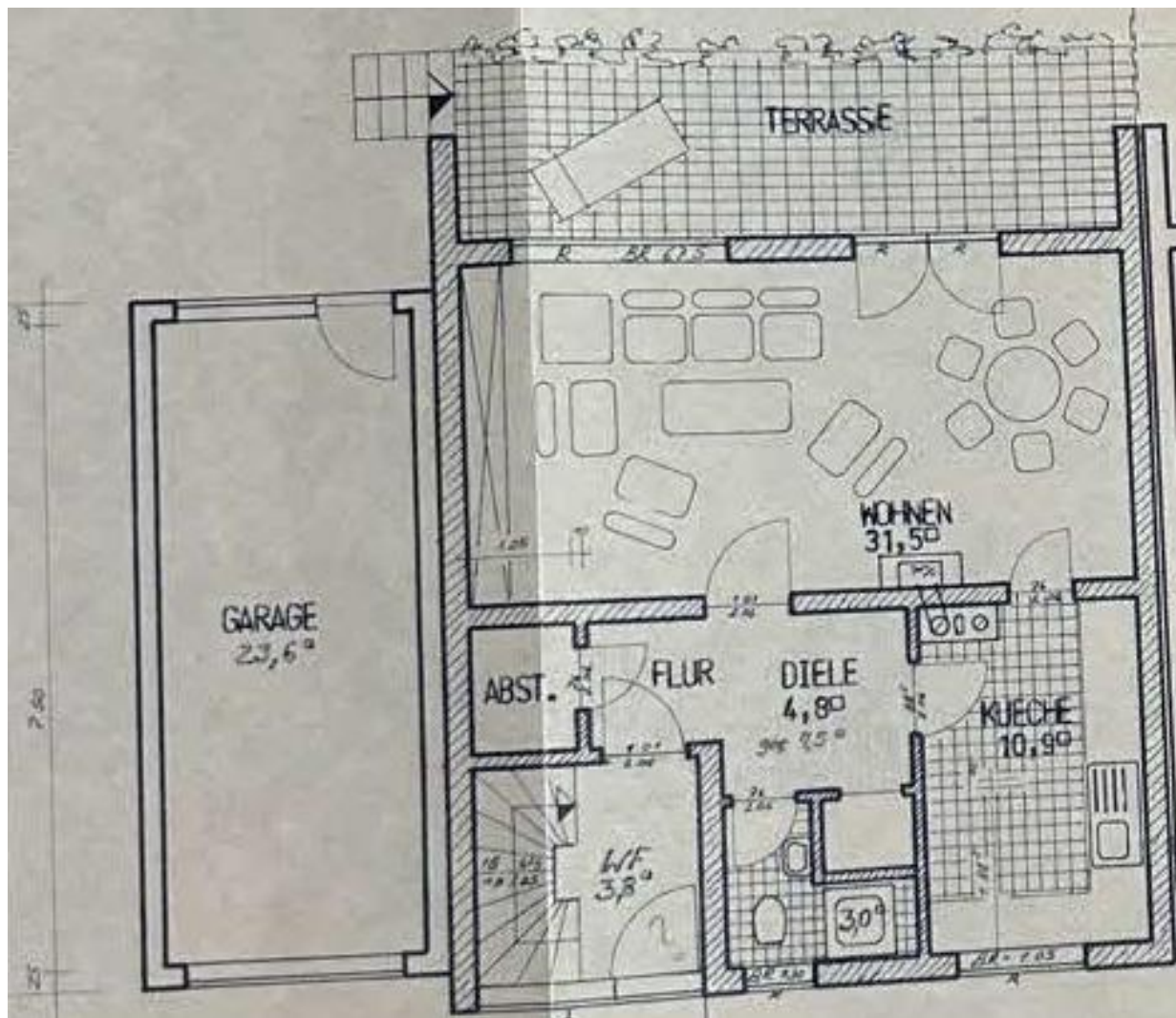


Hand-drawn floor plan of a residential unit. The layout includes the following rooms and features:

- KELLER 1**: 20m², top-left room.
- WASCHR.**: 10,3m², top-right room (bathroom).
- ABST.**: Abstellraum (storage room), middle-left.
- FLUR**: Flur (hallway), central area.
- KELLER 2**: 6,2m², bottom-middle room.
- HEIZRAUM**: 10,6m², bottom-right room (heating room).
- Staircase**: Located in the bottom-left corner.
- Technical Details**:
 - Door swings and thresholds are indicated with dimensions (e.g., 87,5, 2,03, 90, 2,03).
 - A window in the top-left room is labeled "r. 25".
 - A window in the bottom-left room is labeled "13,03" and "19,25".
 - A "Feuerlöscher Notschalter" (fire extinguisher emergency switch) is located in the hallway.
 - A "GAS-FEHLER" (gas leak) alarm is connected to the heating room.
 - Windows in the top-right room are labeled "p. 20" and "p. 10".
 - A "WM" (Wohnzimmer, living room) label is present in the top-right room.

Overall dimensions: 5,82 (width) and 3,38 (depth).

Erdgeschoss:



Obergeschoss:

