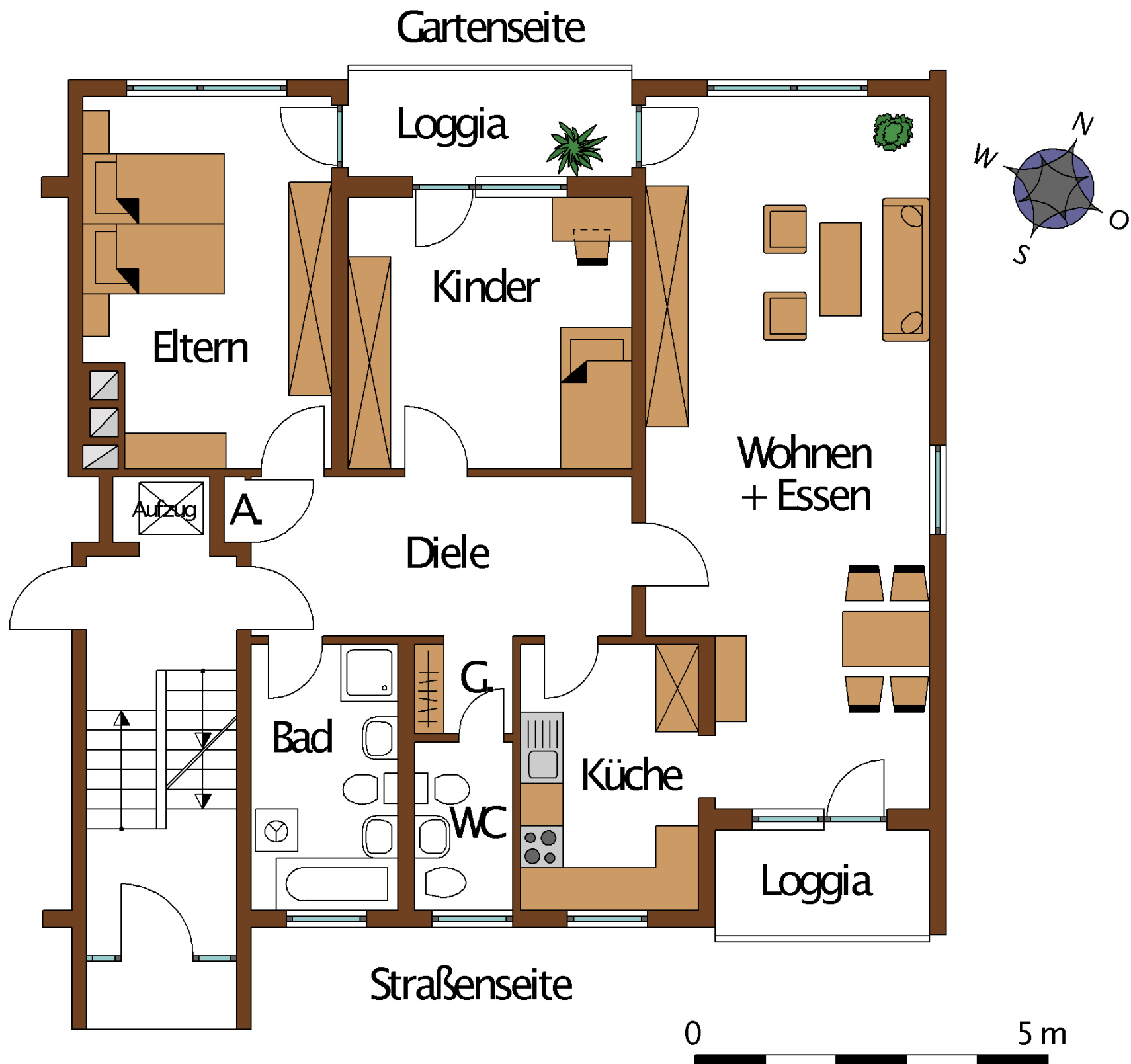


Wohnung Nr. B 12, Erdgeschoss rechts



Berechnung der Wohnfläche 122017, Nr. B12, EG rechts

Eltern	$3,51 \times 5,265 - 0,59 \times 1,495$	=	17,60 m <sup>2</sup>
Kinder	$4,01 \times 3,83$	=	15,36 m <sup>2</sup>
Wohnen + Essen	$4,01 \times 10,08 - 1,00 \times 2,44$	=	37,98 m <sup>2</sup>
Küche	$2,51 \times 3,76$	=	9,44 m <sup>2</sup>
WC	$1,385 \times 2,385$	=	3,30 m <sup>2</sup>
Garderobe	$1,385 \times 1,26$	=	1,75 m <sup>2</sup>
Bad	$2,075 \times 3,76$	=	7,80 m <sup>2</sup>
Diele	$2,26 \times 5,385 + 0,385 \times 0,93$	=	12,53 m <sup>2</sup>
2 Loggien	$(3,01 \times 1,495 + 4,01 \times 1,495) \times 0,5$	=	5,25 m <sup>2</sup>
			111,01 m <sup>2</sup>
	abzüglich 3% Putz		-3,33 m <sup>2</sup>
			<b>107,68 m<sup>2</sup></b>