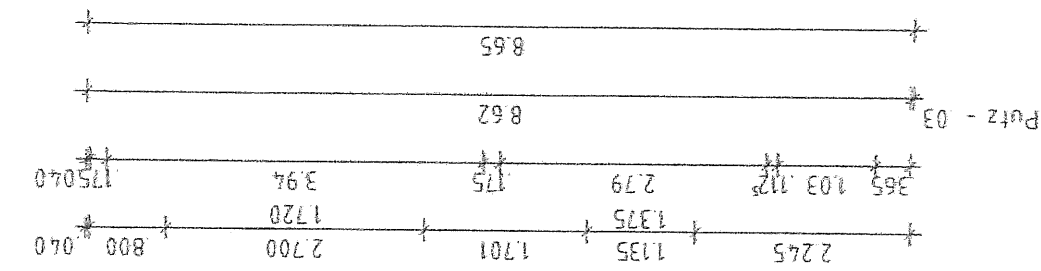
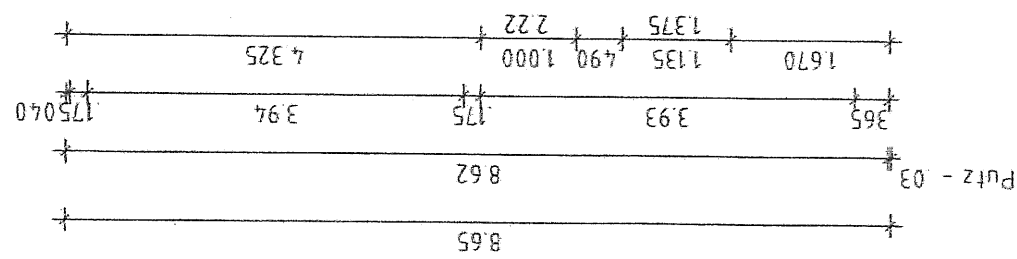
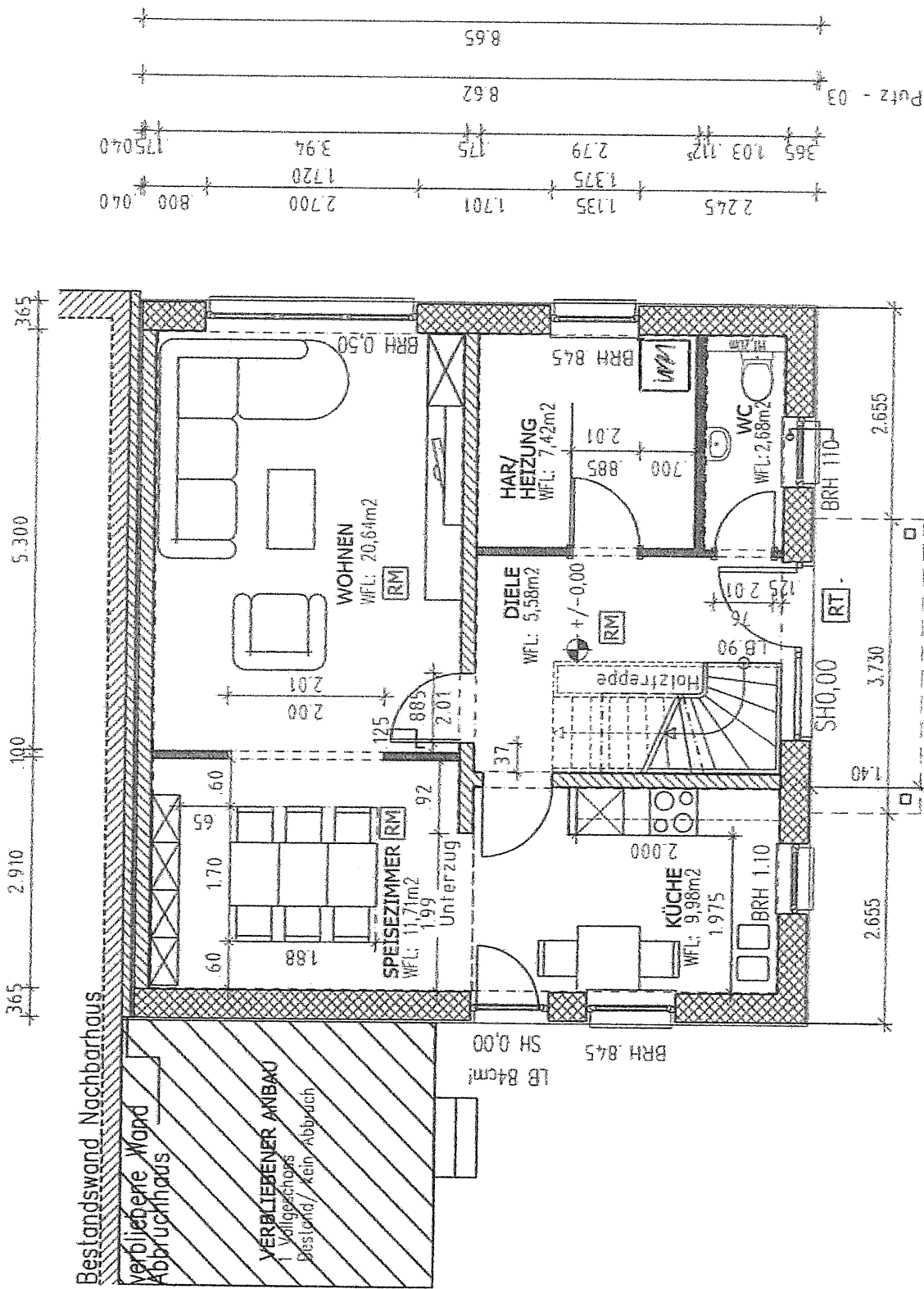


ERDGESCHOSS



Putz - 03

Putz - 030, 100 Versatz

Bestandswand Nachbarhaus
verbleibende Wand
Abbruchhaus

VERBLEIBENDER ANBAU
1 Vollgeschoss
Bestand / kein Abbruch

LB B4cm
SH 0,00
BRH 845

Putz - 03