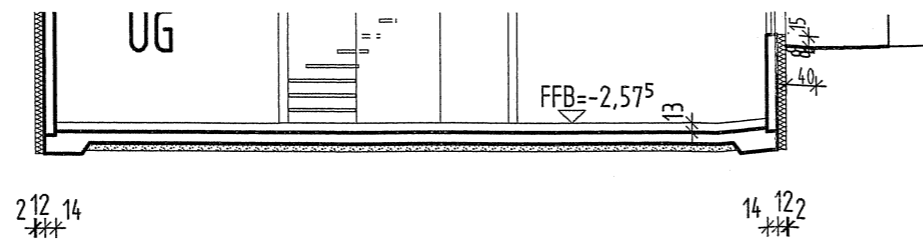


Haus 1-6
UFH=RFB=181,395 üNN
▽ = -2,70⁵

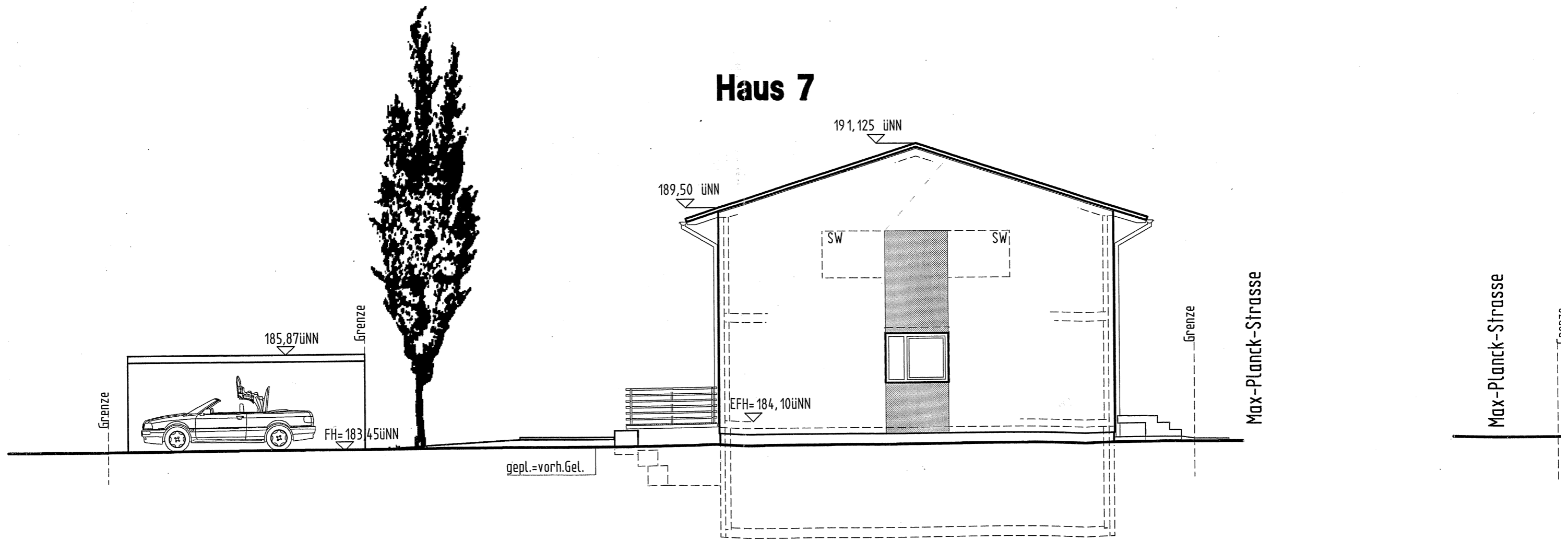
Haus 7-10
UFH=RFB=181,095 üNN
= -2,70⁵



Systemschnitt

183,28üNN
Grenze

Haus 7



Ostansicht

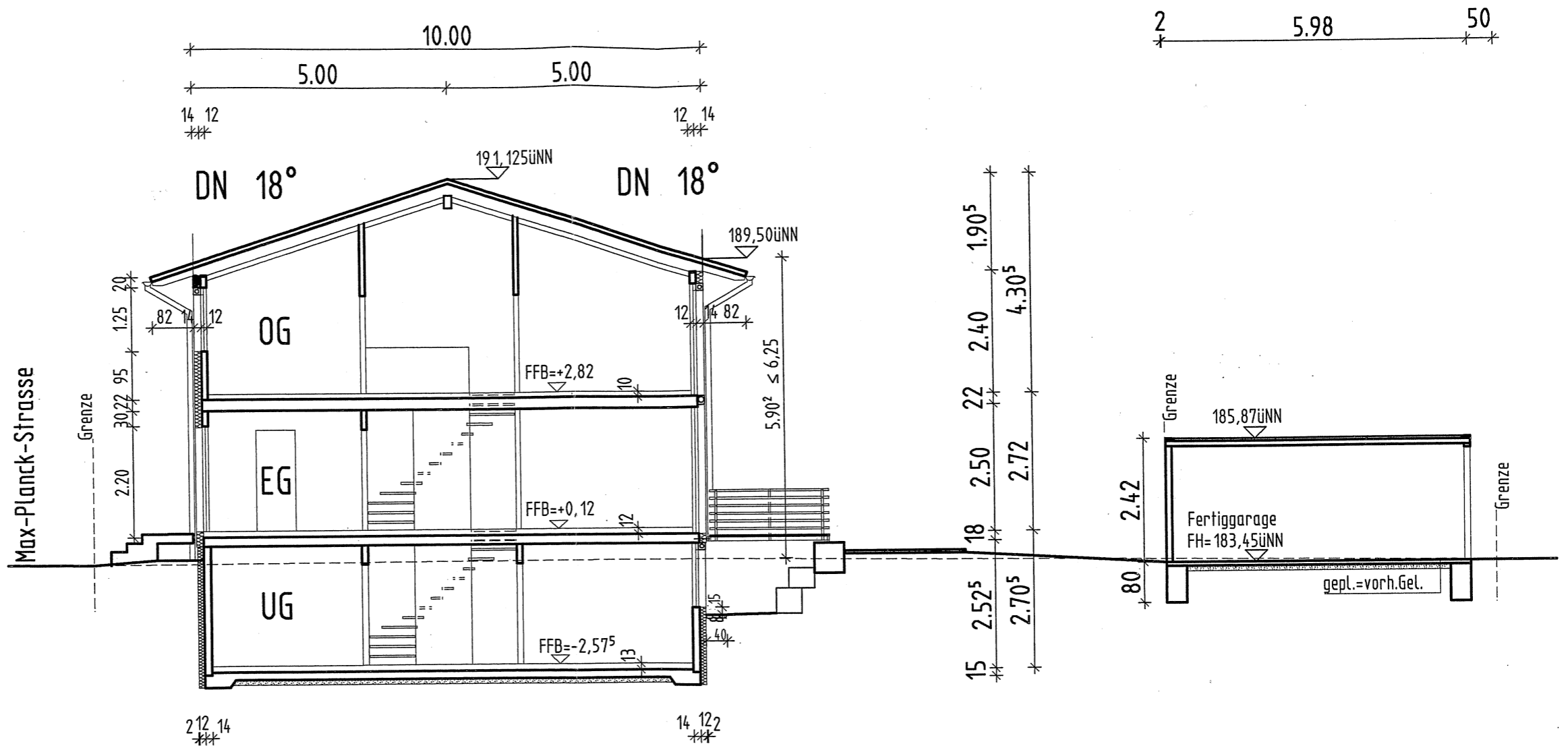
Haus 7-10

Haus 1-6
EFH=RFB= 183,80 üNN
=±0,00

Haus 7-10
EFH=RFB= 184,10 üNN
=±0,00

Haus 1-6
UFH=RFB= 181,395 üNN
=-2,70⁵

Haus 7-10
UFH=RFB= 181,095 üNN
=-2,70⁵

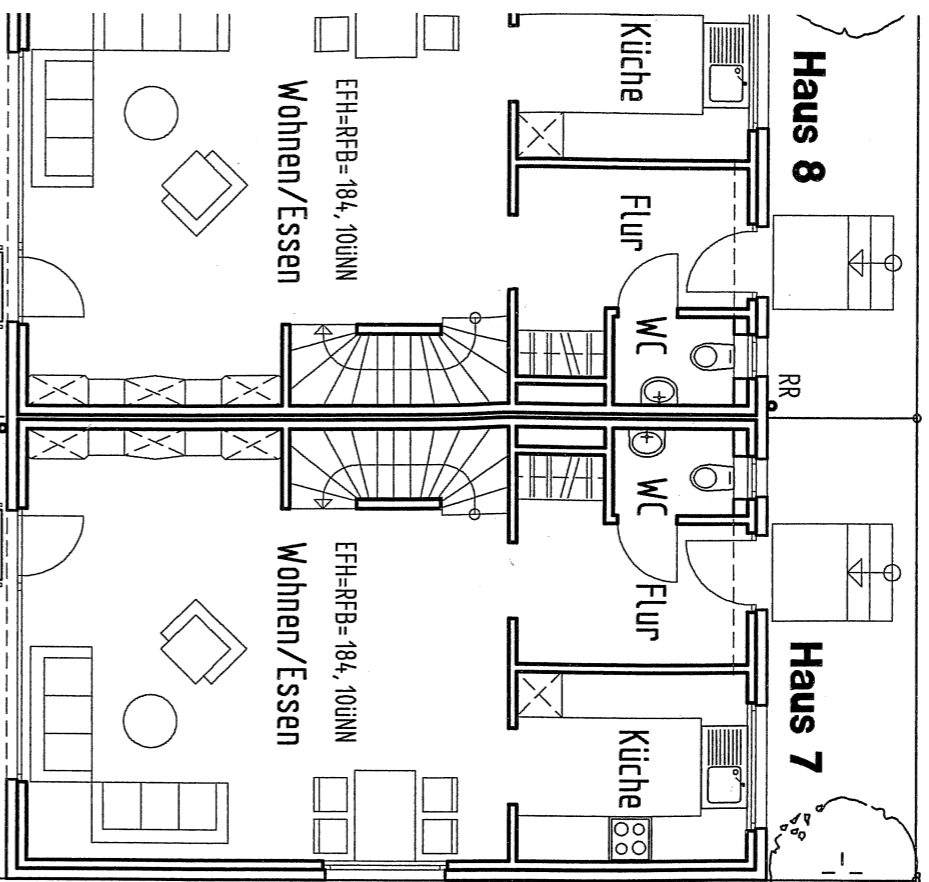


Systemschnitt

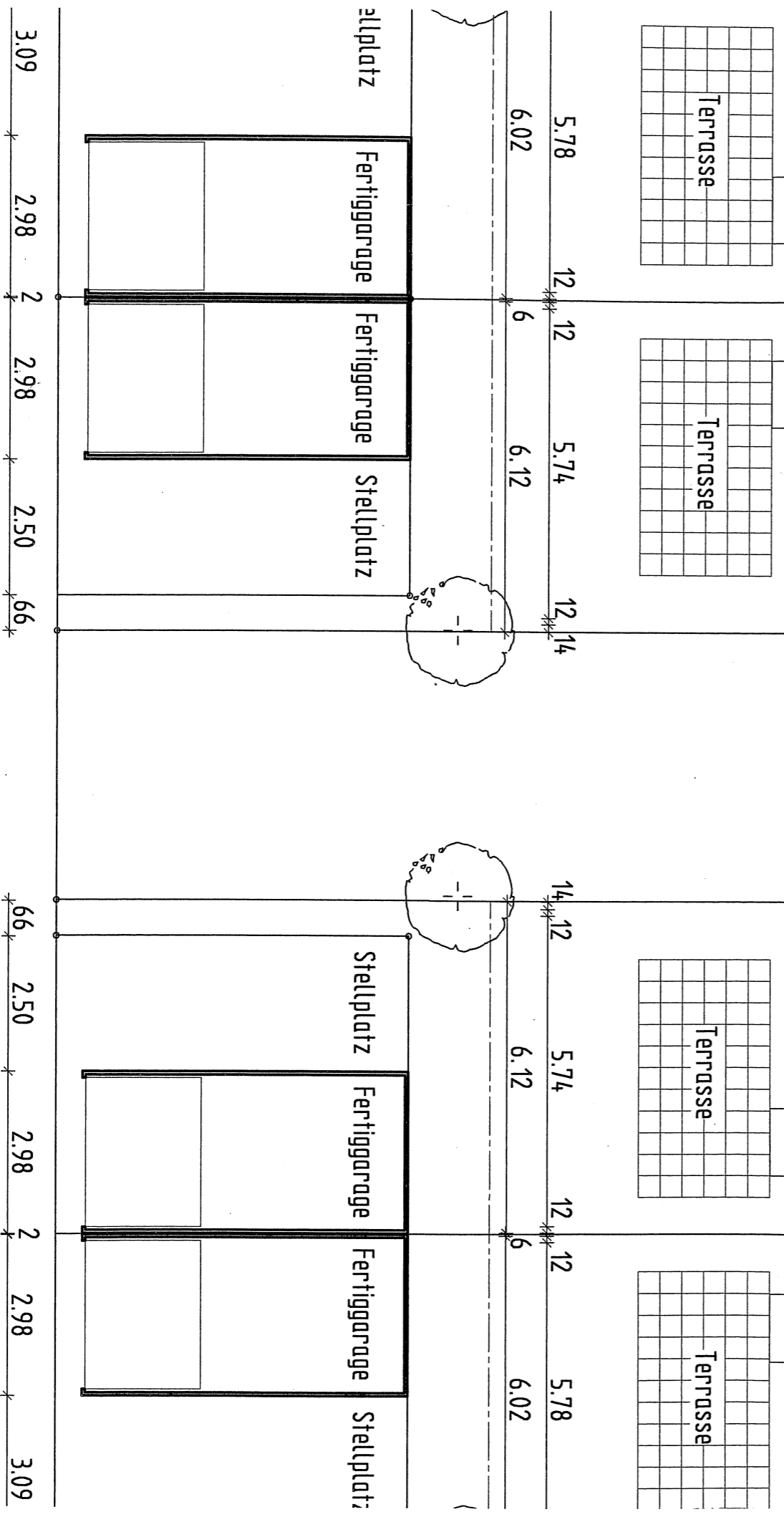
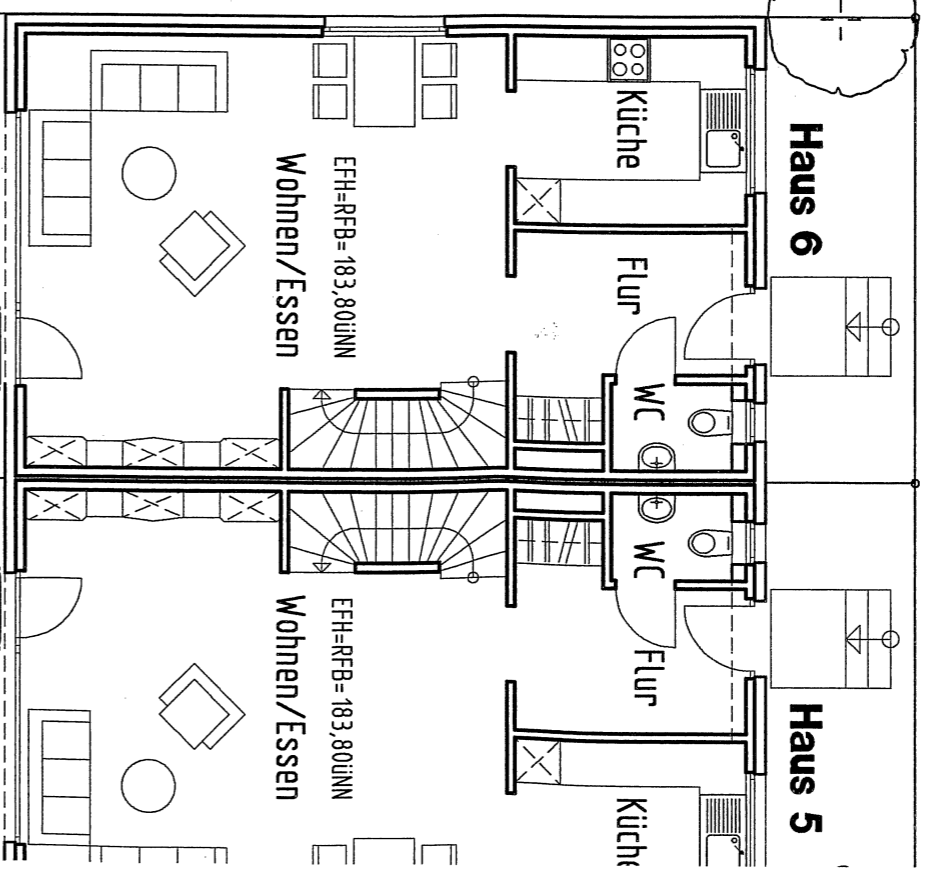
6.02 6 6.12 10 2.50 12.14
 2.50 10 1.92 111.15 61.1511 188 10 2.50 12.14

183.46

14 6.12 6 6.02
 14 2.50 10 188 111.15 6 1.1511 192 10 2.50



12.14 3.36 10 2.91 10 1.16 10 1.75 12.14
 12.14 6.37 10 3.01 12.14
 10.00
 12.14 6.37 10 3.01 12.14
 12.14 3.36 10 2.91 10 1.16 10 1.75 12.14



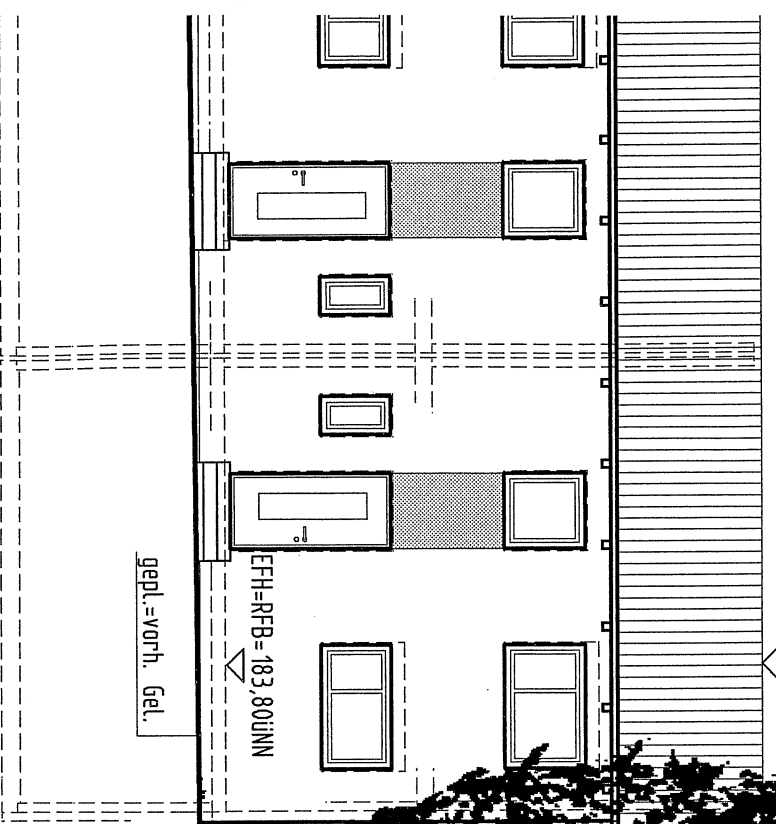
× 183.36

Haus 5

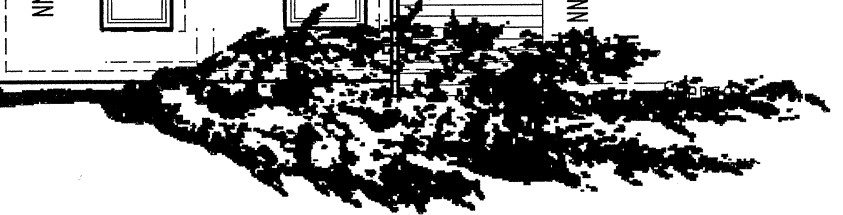
Haus 6

Haus 7

Haus 8



190,825 iINN



191,125 iINN



EFH=RFB=184,10qINN

Haus 6

Haus 5

Haus 4

Haus 3

190,825qINN

