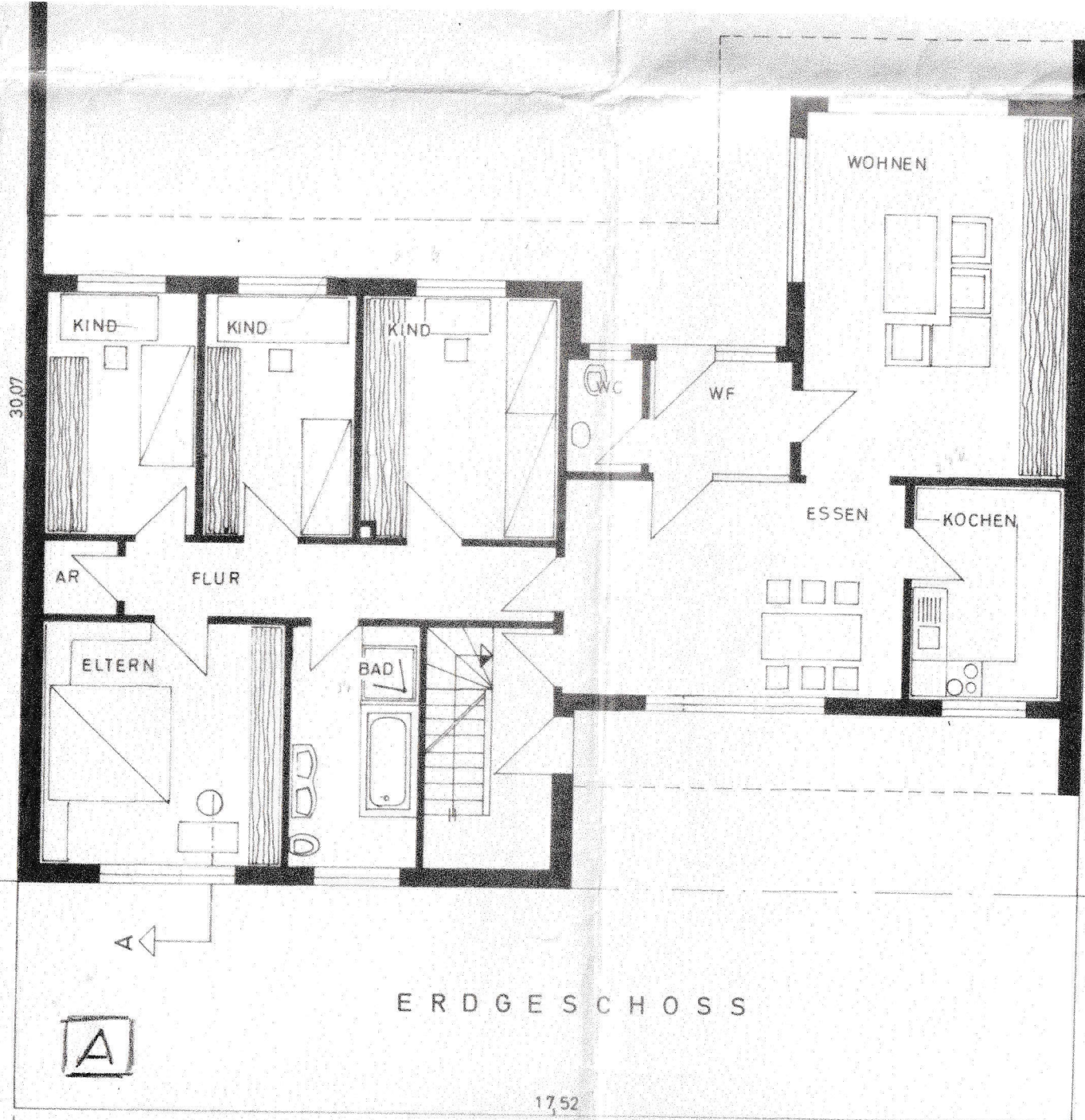


5,395
4,125
3,125
2,385
1,635
1,00
74
10,115
6,115
4,01
115
126
115
115
4,01
300
30

C



17,52
130
226
1,385
1,365
1,385
2,80
1,25
3,01
1,87
1,385
56,30
30
126
115
7,135
1,385
115
126
115
2,135
115
2,135
115
2,135
115
5,635
115
4,385
1,385
30
30
4,01
115
2,125
115
2,125
115
115
2,51
30



A

A

B

10,24
1,865
1,75
3,00
125
1,01
125
3,51
3,51
115
115
1,885
30
6,01
30
100
100