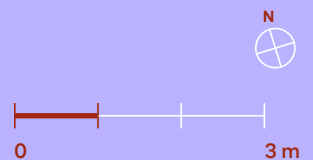
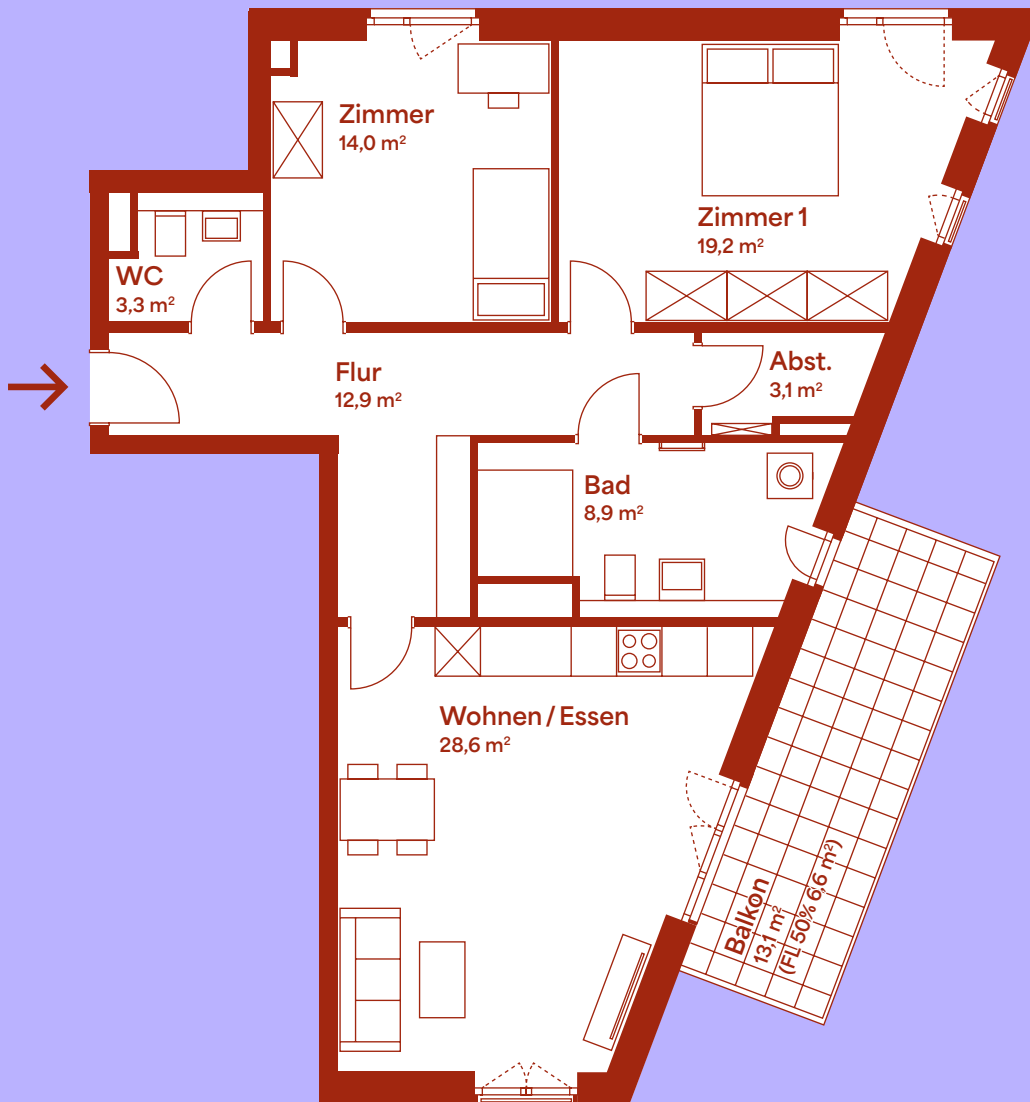


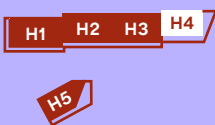
# Wohneinheit 58

2. Obergeschoss | Haus 4 | 3 Zimmer

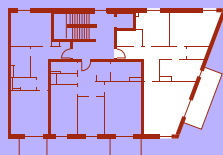
ROTEN  
BLEICHER



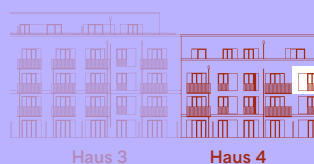
LAGEPLAN



2. OBERGESCHOSS



ANSICHT WEST



Zimmer 1	19,2 m <sup>2</sup>
Zimmer 2	14,0 m <sup>2</sup>
WC	3,3 m <sup>2</sup>
Abstellraum	3,1 m <sup>2</sup>
Flur	12,9 m <sup>2</sup>
Bad	8,9 m <sup>2</sup>
Wohnen / Essen	28,6 m <sup>2</sup>
Balkon (50%)	6,6 m <sup>2</sup>
<b>Grundfläche ca.</b>	<b>96,6 m<sup>2</sup></b>