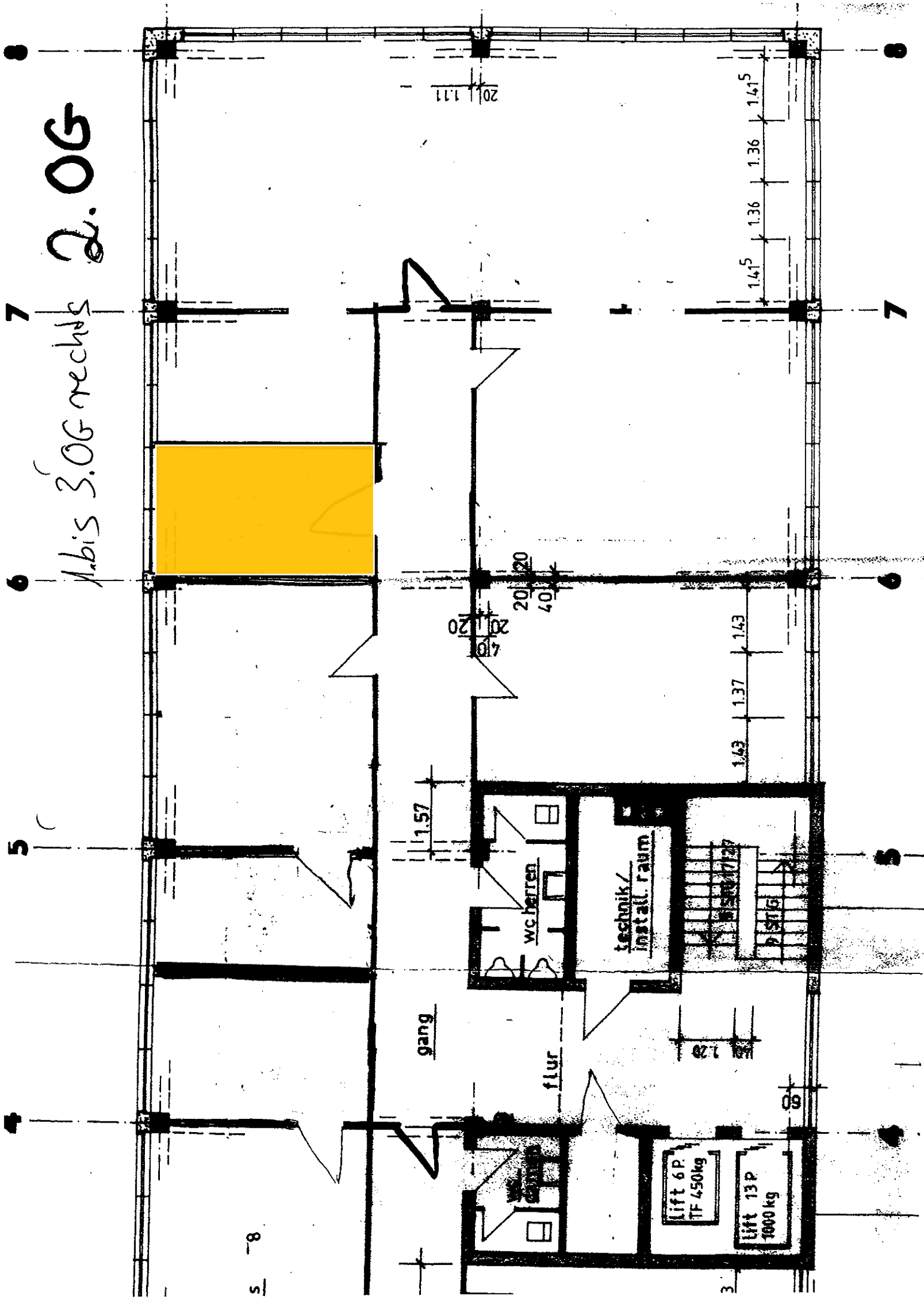


1. bis 3. OG rechts 2. OG



5 - 8

3

68

Lift 6P
TF 450kg

Lift 13P
1000kg

RA 128

technik /
instal. raum

wc herren

gang

flur

20 | 20
40 | 20

20 | 20
40 | 20

1.43 | 1.37 | 1.43

1.415 | 1.36 | 1.36 | 1.415

20 | 1.11