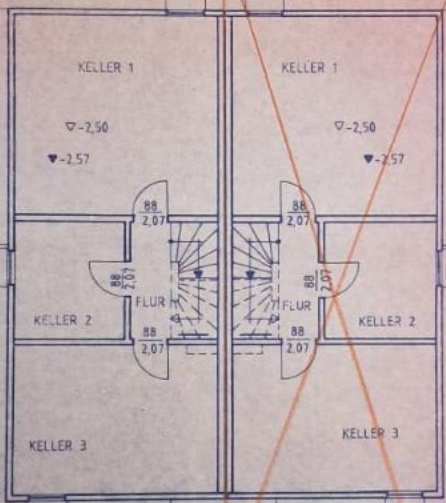
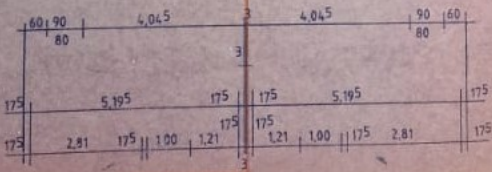
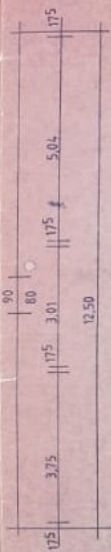


BRH 1,45



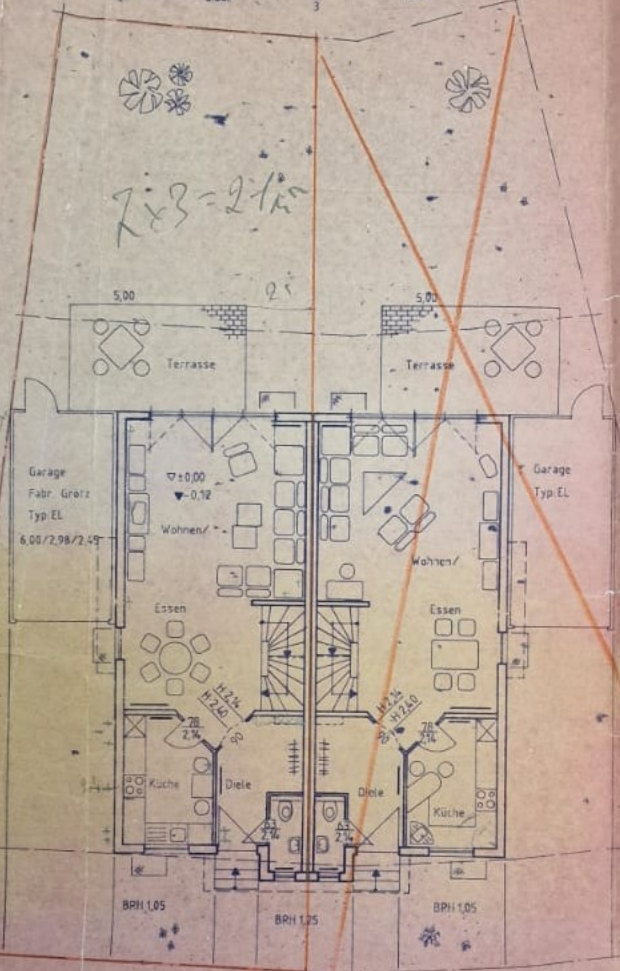
13 STG
19.2/26



H&G

	5.565		175	175	5.565	
24	3.92		1.21	1.21	3.92	24
93	3.52		1.095	1.095	3.52	93
	2.56				2.56	
			3			

$2 \times 3 = 2 \frac{1}{2}$



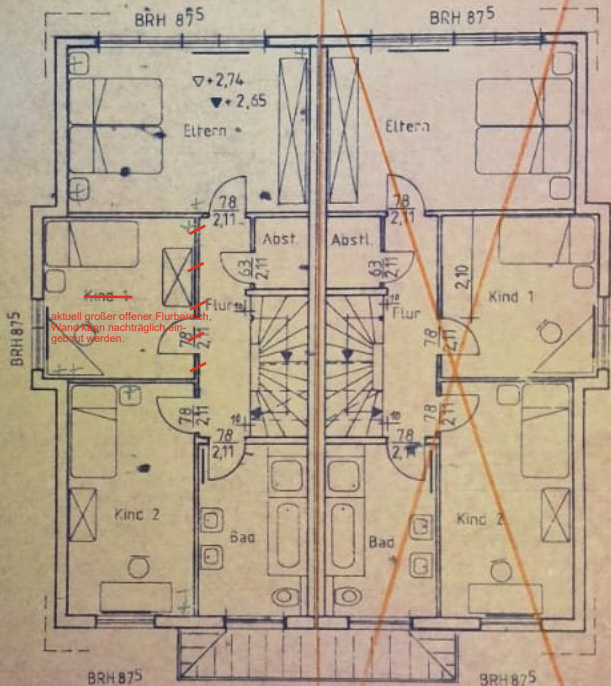
	90	6.10				
	2.56	8.16	24	3.00		
	175					
	5.50	3.01	175	4.975		
	3.685	11.5				
	24	2.15	8	2.705	11.5	12.50
	75					
	24					
						3.40

			3									
88	1.26	86	1.13	395	21	32	60	395	1.13	86	1.26	88
	1.51		2.56		11.3		11.3		2.56		1.51	
	4.23		24	90	175	175	30	24	4.23			
24	2.57	8	1.50	90	90	8	1.50	8	2.57	24		
24	1.43	2.20	1.50	175	175	1.50	2.20	1.43	24			
			3									
100			11.12						6.00			

DEG

24	175	1,40	8	3,495	24	
24	8	3,39	8	3,495	24	
24	3,39	24	24	3,675	24	
24	1,50	1,925		3,575	24	
24	4,975	8			24	
24	3,01	3,39	8	3,495	24	
24	175	3,01	8	3,495	24	
24	3,685	175	3,01	8	3,495	24
24	5,055	24	4,45	5,055	24	
24	5,055	24	4,45	5,055	24	

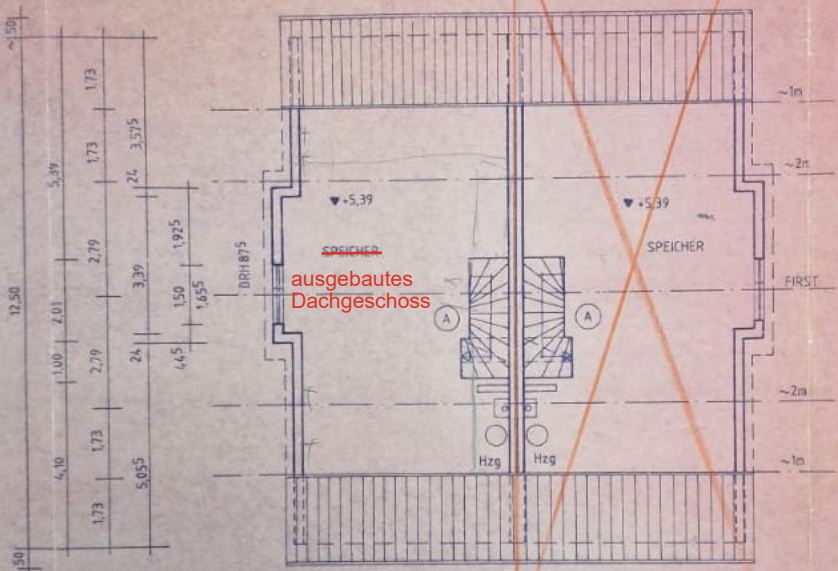
24	3,24	8	1,10	8	1,13	175	3	175	8	1,13	8	1,10	8	3,24	24
24	5,13	195	175	5,13	24										
93	1,76	1,655	1,76	1,655	1,095	3	1,095	1,76	1,655	1,76	1,655	93			



88	1,26	1,445	1,26	70	70	1,26	1,445	1,26	88
24	1,655	1,29	1,29	175	175	1,29	1,655	24	
50	2,74	6	2,31	175	175	2,31	6	2,74	50
24	3,24	8	1,10	1,1	1,21	1,10	8	3,24	24



(A) Einsubtrittstreppe 60/1,20 + Holzboalkendecke im Treppenloch
 Alternativ: Treppe ins DG, 14STG 18,9/26, als Sonderwunsch!



ausgebautes
Dachgeschoss

~20	24	4,63	1,00	1,75	1,00	4,63	24	~20
50	124	3,92	1,21	1,75	1,21	3,92	24	50
~20		5,37		1,75		5,37		~20

