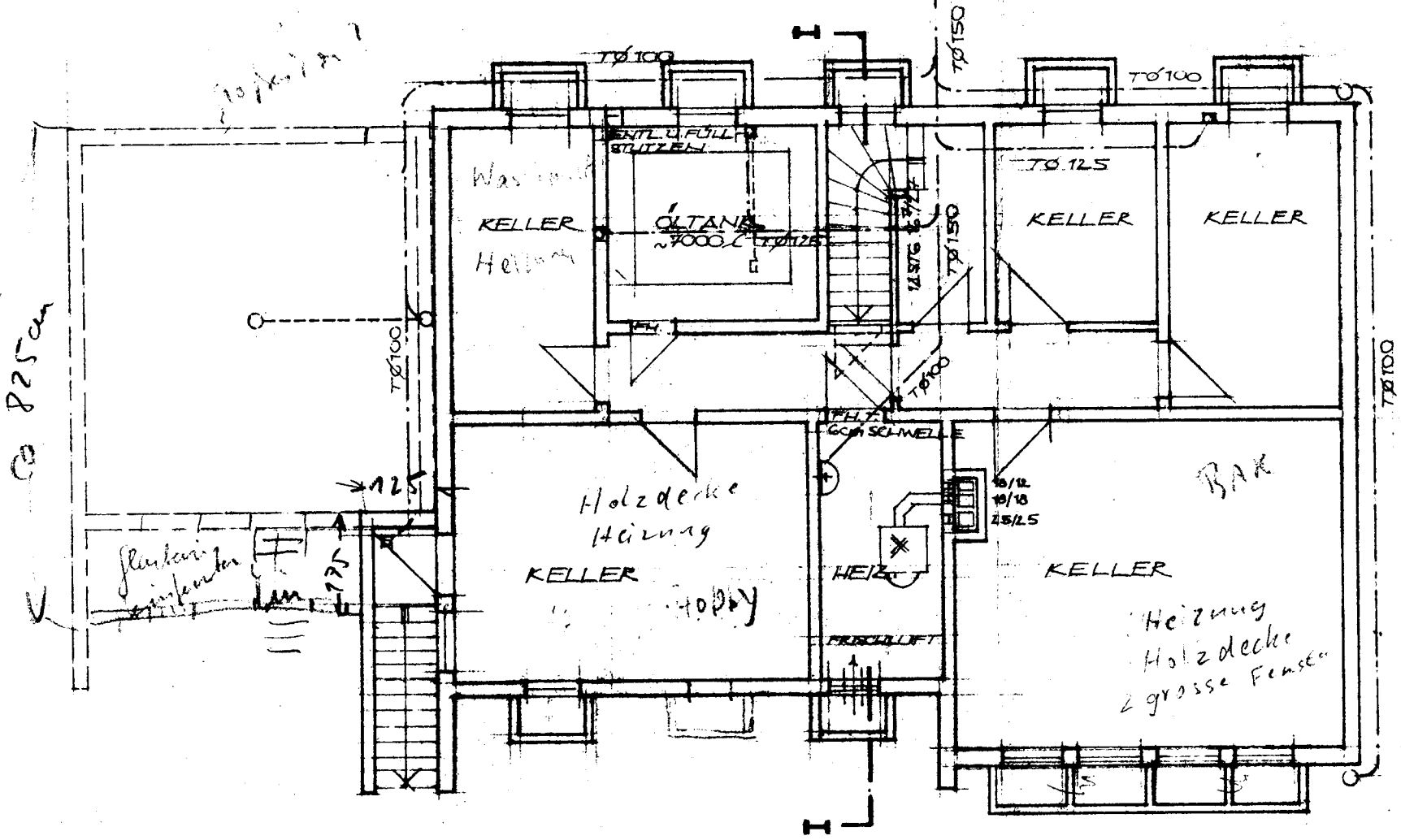


30	201	2A	3.445	2A	2.53	2A	2.555	2A	2.76	30
----	-----	----	-------	----	------	----	-------	----	------	----

REV. SCHACHT

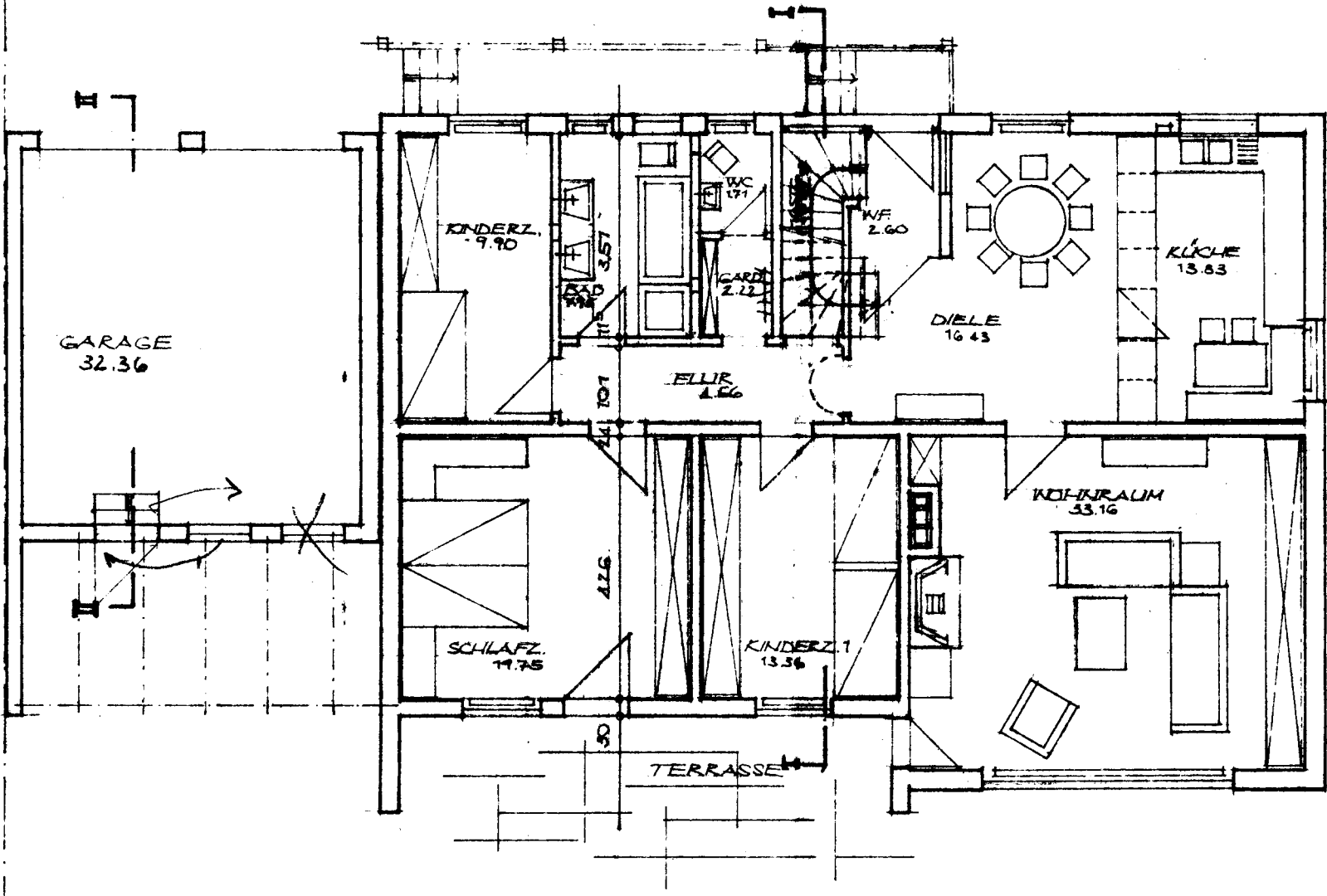


30	4.635	24	10.86
30	5.385	30	

KELLERGESCHOSS:

30	5.51	24	201	24	6.26	30
30	7.70	30		30	6.56	

2.74
24
6.07
24
6.49
24
30



30
1.26
3.90
1.30
4.635
24
5.385
10.86
30



5865
24 5.385 24 2 30 2.135 11⁵ 2.26 11⁵ 1.135 2.53 17⁵ 2.635 60 2.385 30
2.26 36⁵ 2.26 2 1.26 74 76 36⁵ 76 36⁵ 76 86⁵ 1.26 1.74 1.26
2.135 2.135 1.30 101 101 101

101 49 101 49 101 49 30 1.26 36⁵ 101 1.99 1.26 30 4.01 1.435
130 2.15 1.30 11⁵ 3.135 11⁵ 1.635
24 5.385 24 2 30 4.635 11⁵ 6.26 30

5865

1130

380

30

650