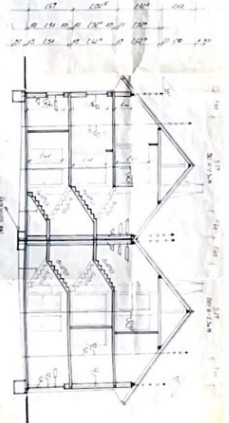




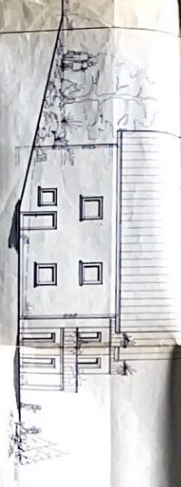
NORDSEITEN



OSTSEITEN



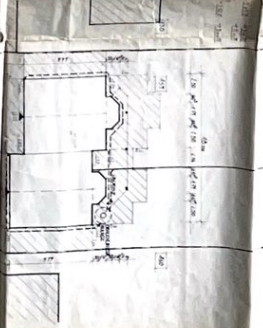
SCHNITT S-S



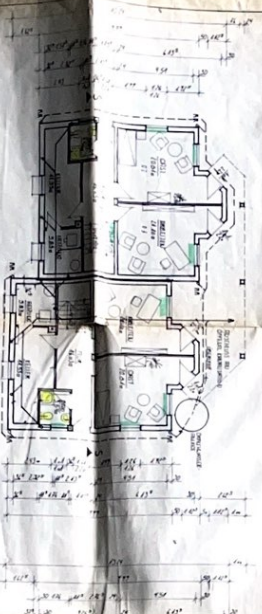
WESTSEITEN



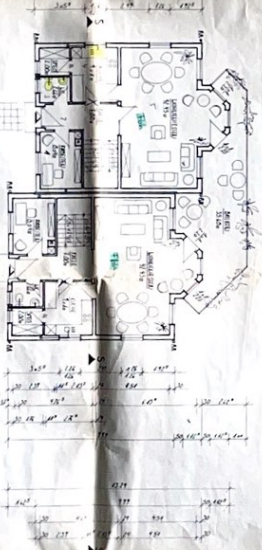
SÜDSEITEN



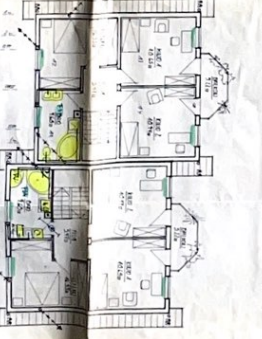
ABSTANDSKLARUNG



KELLERKESCHUSS



ERDGESCHUSS



DACHGESCHUSS

**LEISTUNGSANGABE**  
**MARTIN HANIKKA, DIP.-ING. HOCHBAU, BDB**  
 VERBUNDENES ARCHITECTURBÜRO / VERBUNDENES ARCHITECTURBÜRO

**NEUBAU EINES DOPPELHAUSES**

PROJEKTLEITER	Martin Hanikka
ARCHITECT	Martin Hanikka
DATE	1.11.2011

3. Planung