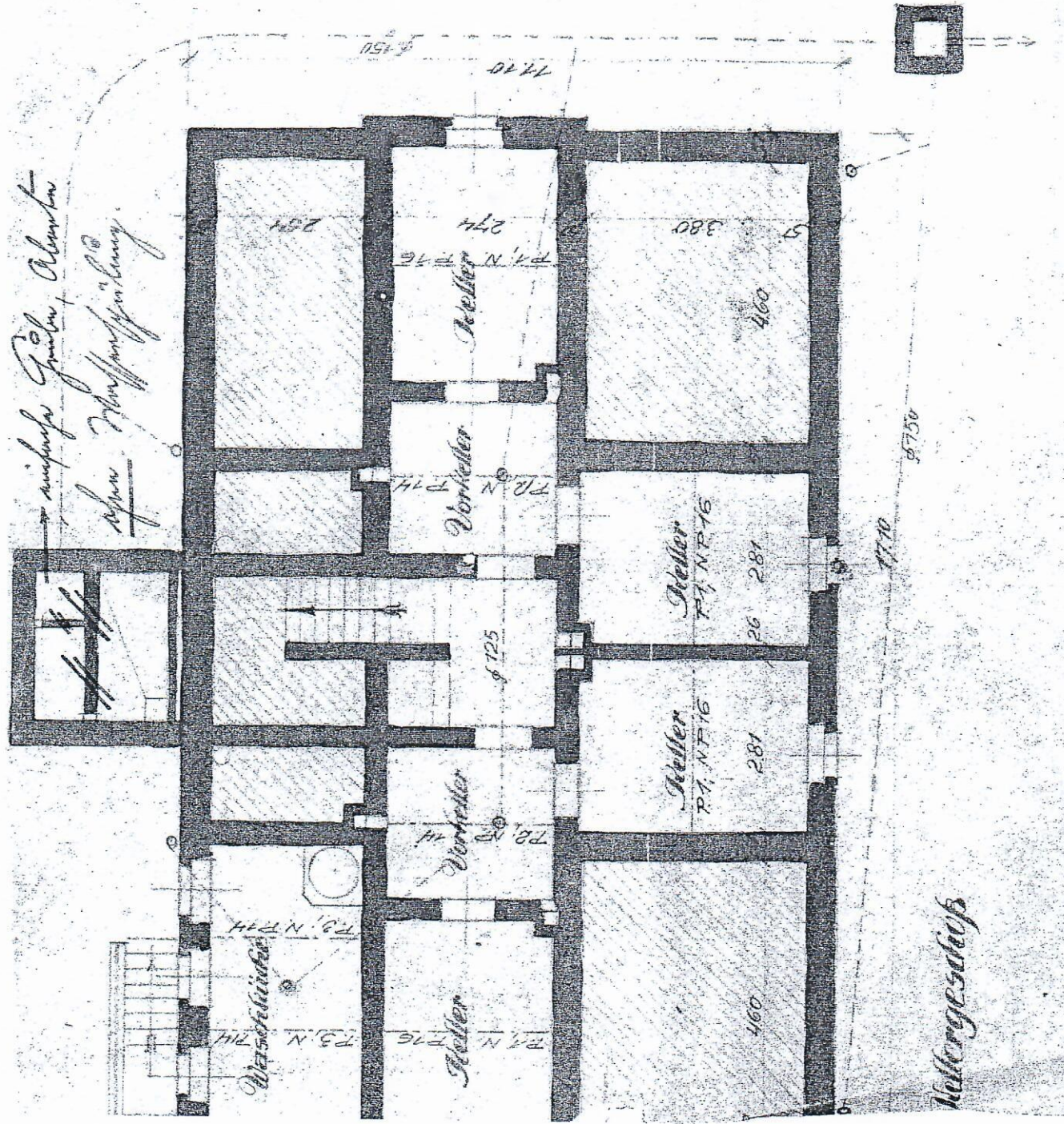


→ einfache Zellen, Alamben  
ohne Hoffganganlage.



281

274

380

460

Vorzimmer

Zelle

26 281

125

Zelle

281

Vorzimmer

Wasserschüssel

Zelle

460

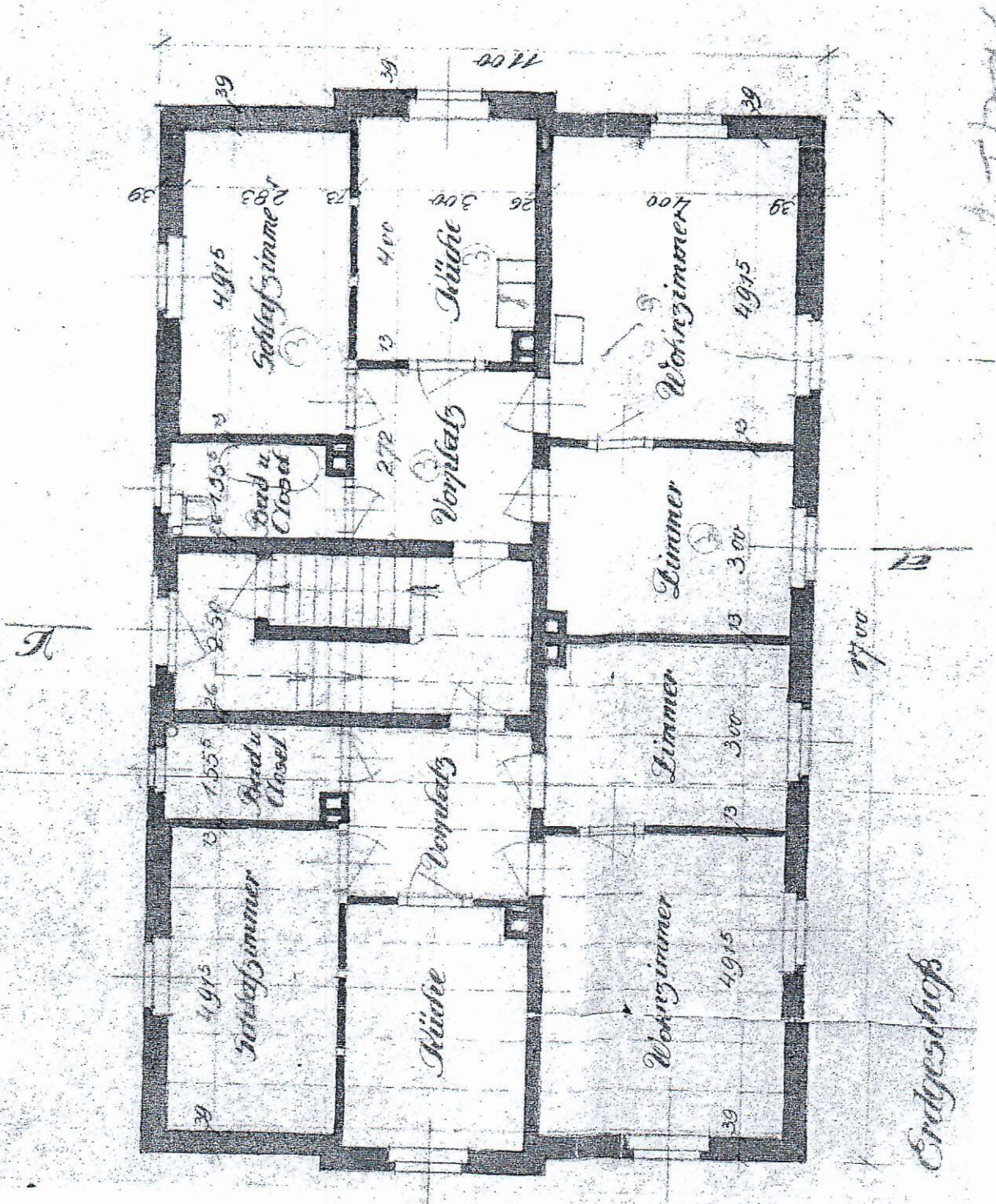
Hallergeschoß

1750

1710

1750

1710



Endgeschloß

Bauherrschloß:

W. Meyer

Architekt u. Bauleiter:

A. Seifert

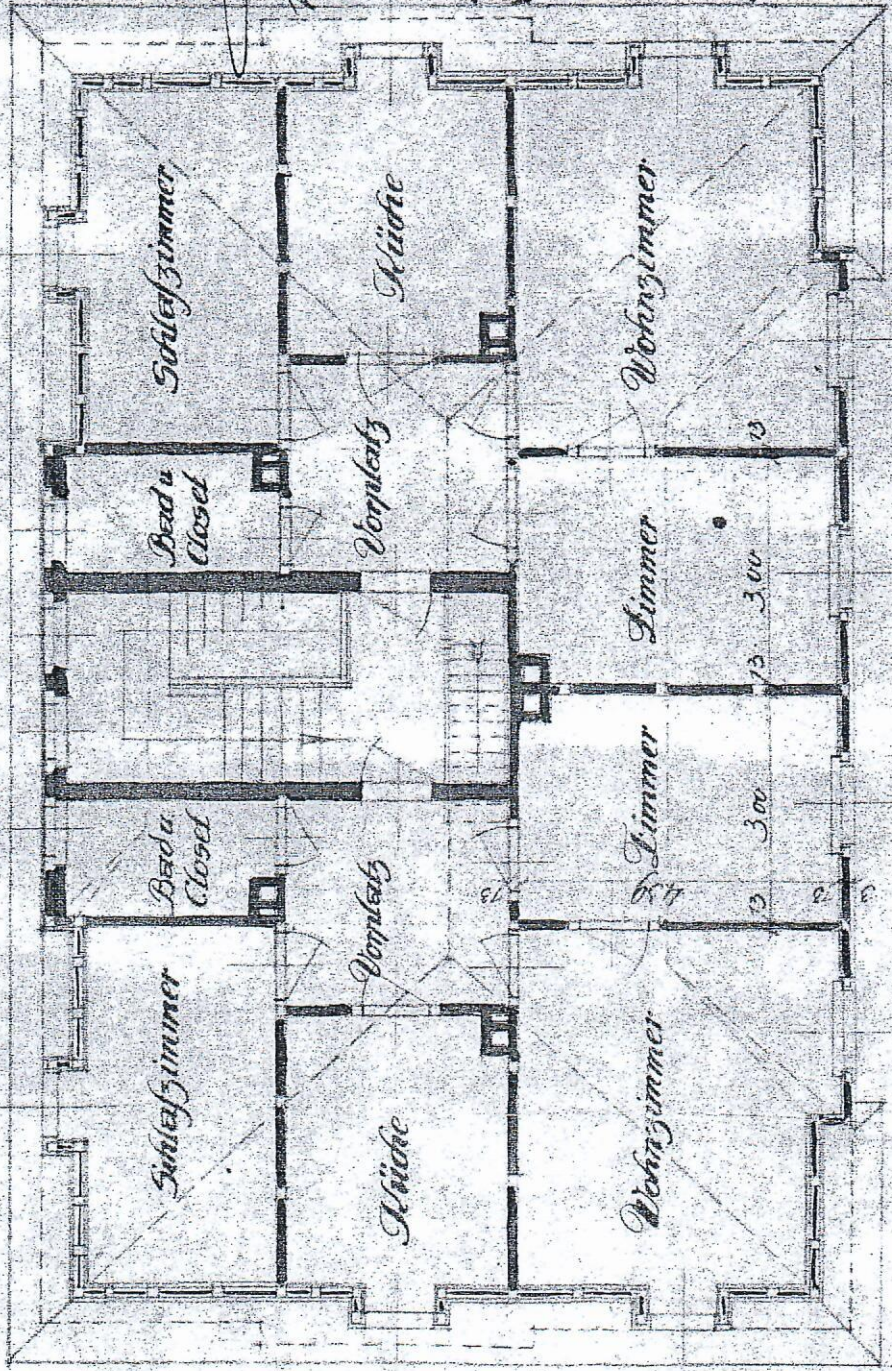


Ausführendes Gewerbe:

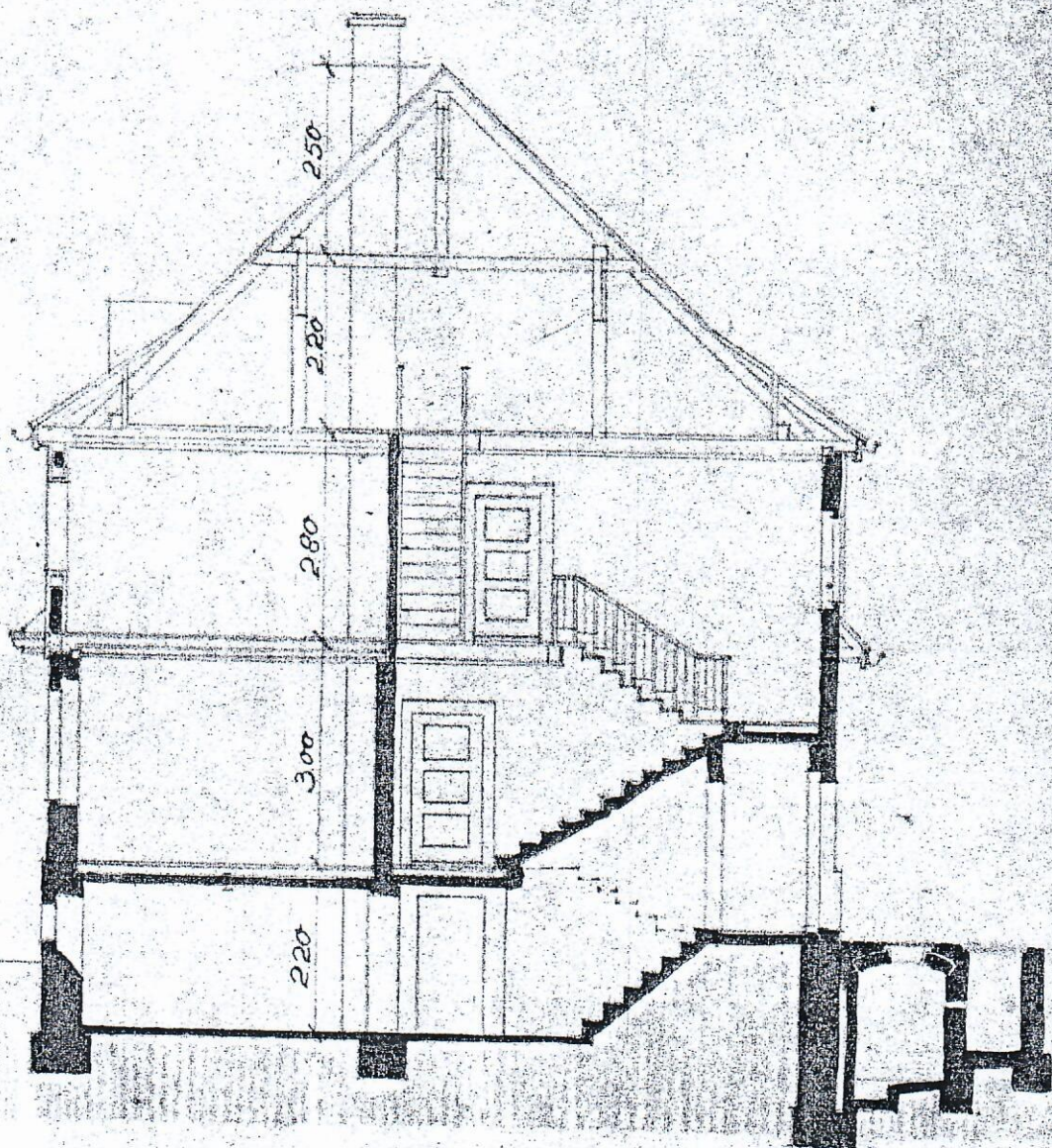
1. Obergeschloß

Handwritten notes and scribbles in the right margin.

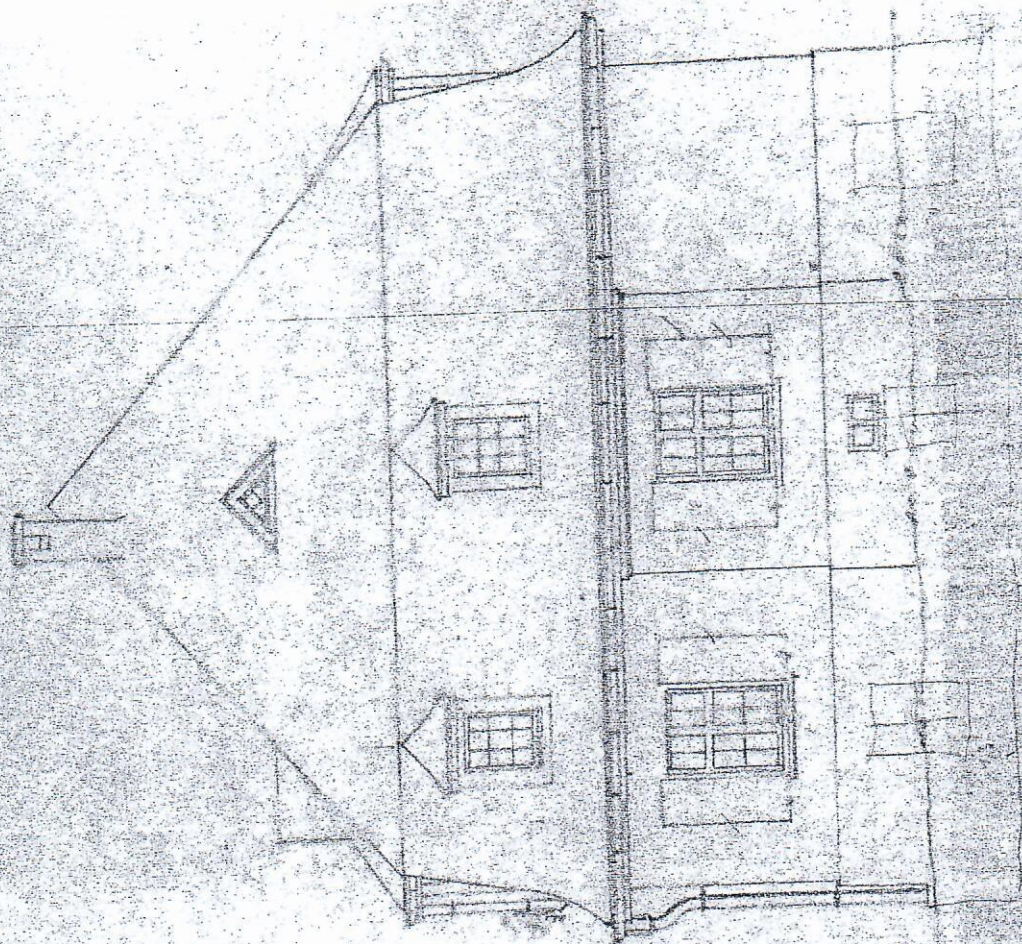
Wickau, 15. Juli 1922



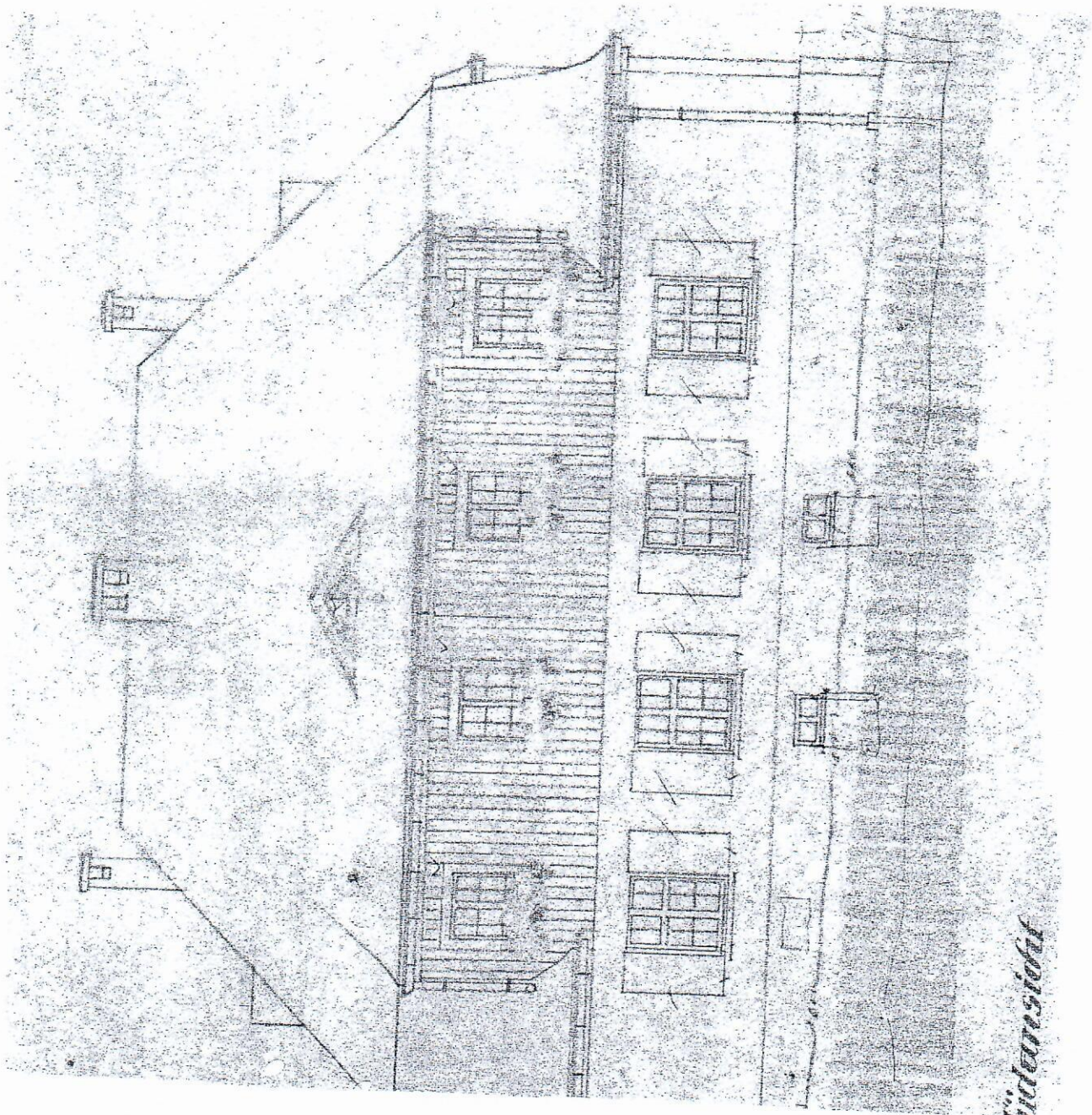
Blatt 1



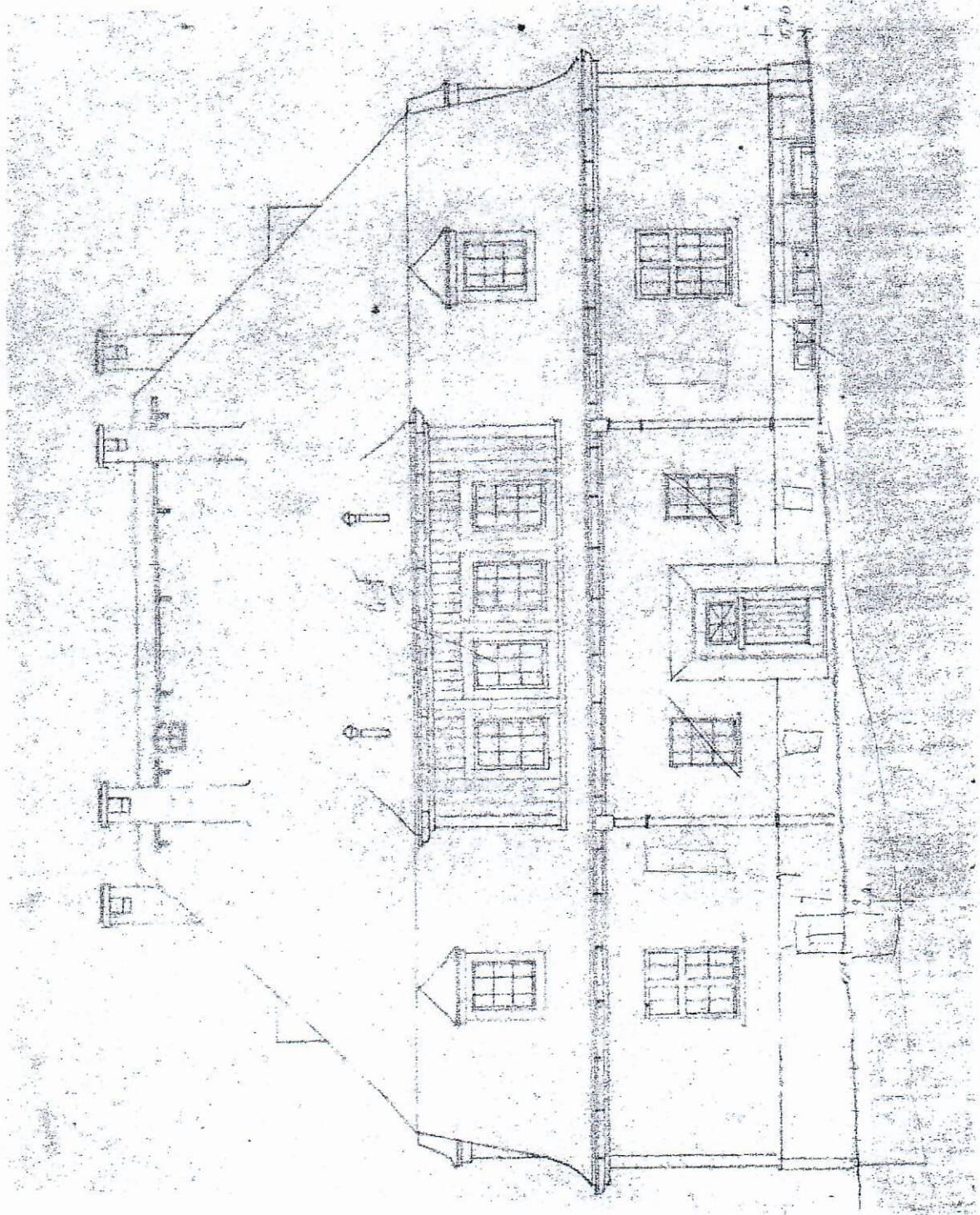
Schnitt a b



*Ostansicht*



*Uddersjöfält*



*Nordansicht*