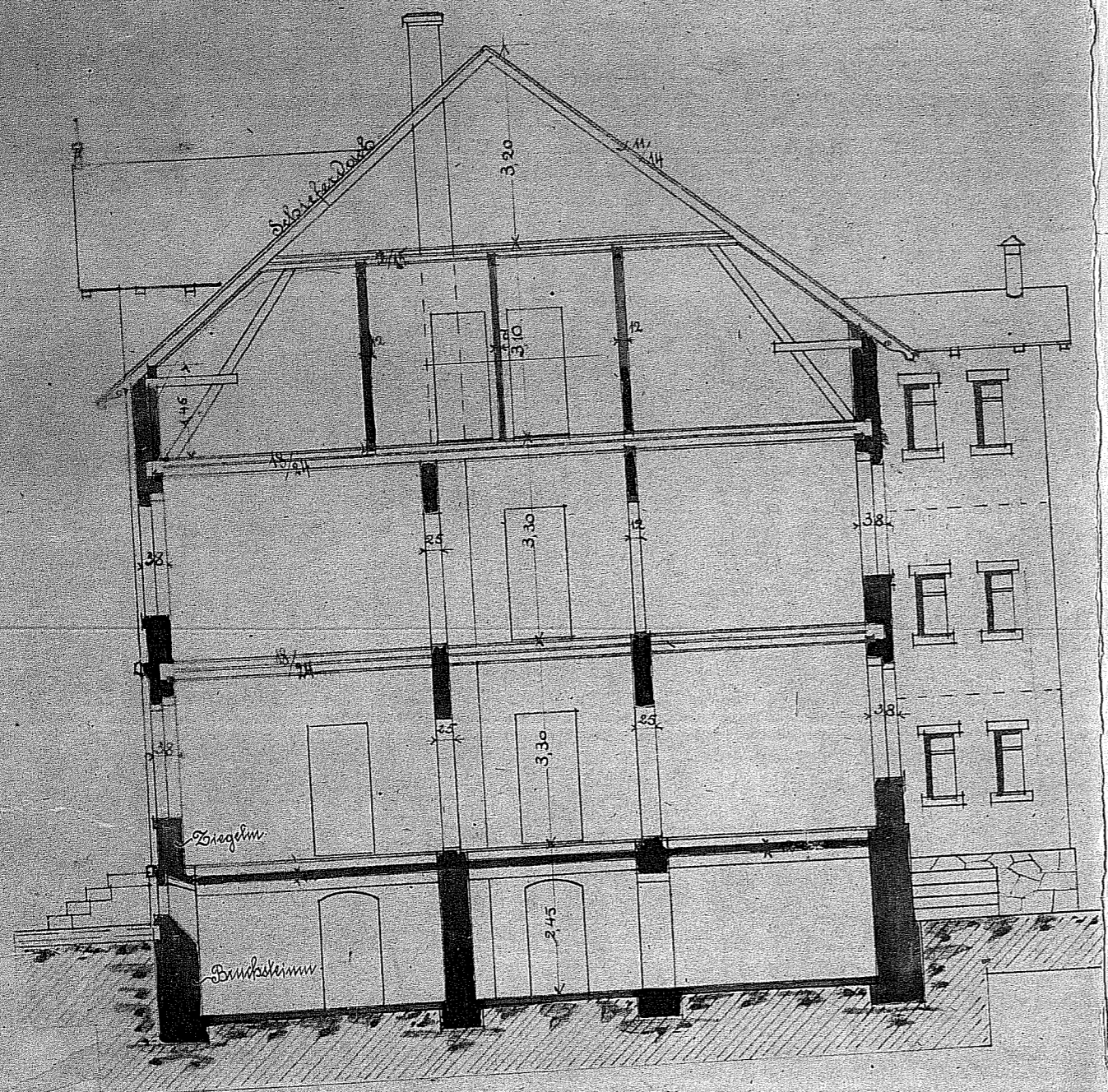
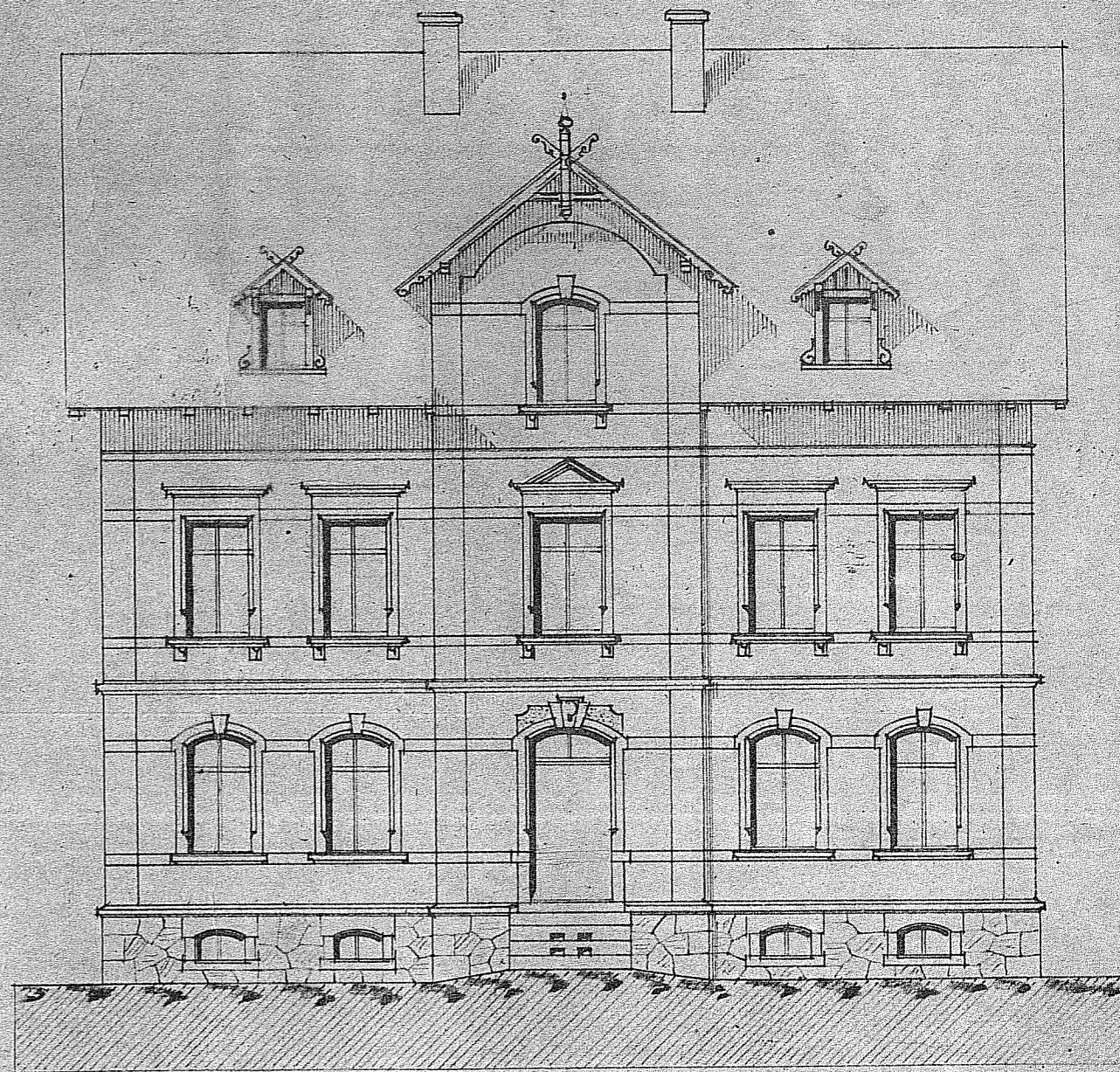


Zeichnung zum Neubau eines Wohnhauses

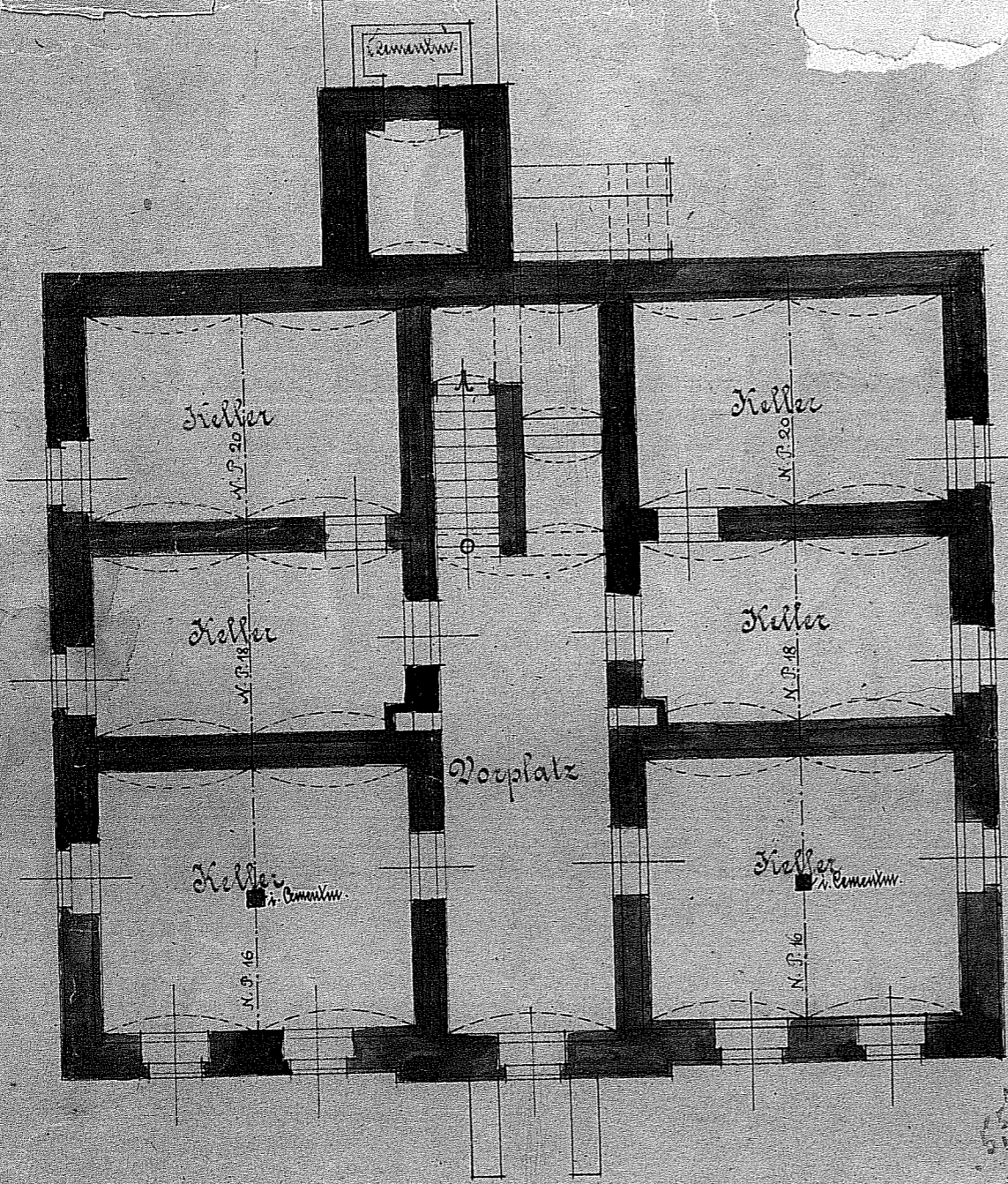
für die Firma Gebr. Schüller, A. G., Ver



Schnitt

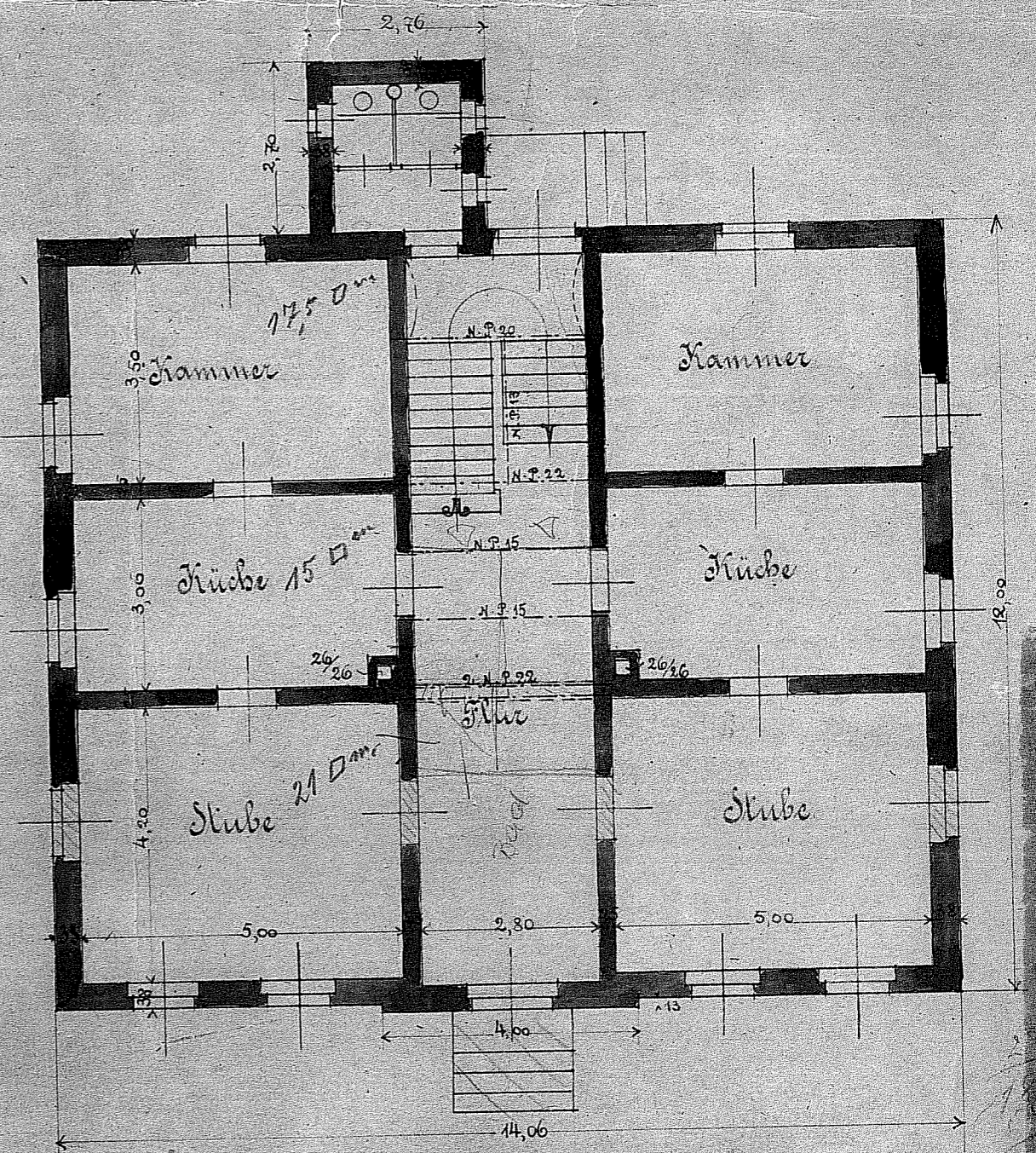


Vorderansicht



Kellergeschoß.
(Bruchsteinmauerwerk)

Handwritten notes and calculations:
 11.20
 20.00
 12.50
 20.00
 22.00
 53.70



Erdgeschoss.
(Ziegelmauerwerk)

Handwritten notes and calculations:
 2.20
 2.50
 4.50
 5.00
 5.30

