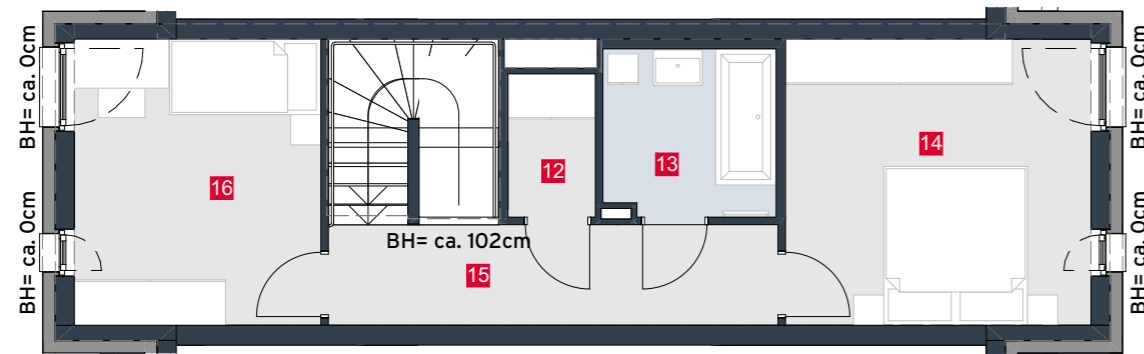


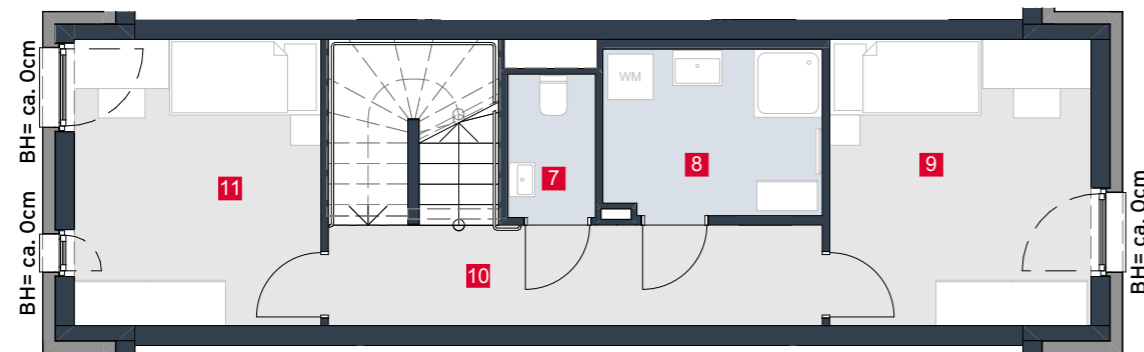
## HAUS 03 TOP 03

Wohnfläche	129,98m <sup>2</sup>
Terrasse	10,50m <sup>2</sup>
Garten	31,38m <sup>2</sup>

EG	1	Vorraum	3,88m <sup>2</sup>
	2	Küche	7,02m <sup>2</sup>
	3	AR	3,66m <sup>2</sup>
	4	WC	2,14m <sup>2</sup>
	5	Wohnzimmer	23,00m <sup>2</sup>
	6	Gang	4,97m <sup>2</sup>
OG1	7	WC	2,14m <sup>2</sup>
	8	Bad	6,32m <sup>2</sup>
	9	Zimmer	13,10m <sup>2</sup>
	10	Gang	8,69m <sup>2</sup>
	11	Zimmer	12,34m <sup>2</sup>
DG	12	AR	2,19m <sup>2</sup>
	13	Bad	4,95m <sup>2</sup>
	14	Zimmer	15,35m <sup>2</sup>
	15	Gang	7,89m <sup>2</sup>
	16	Zimmer	12,34m <sup>2</sup>



2. Obergeschoss

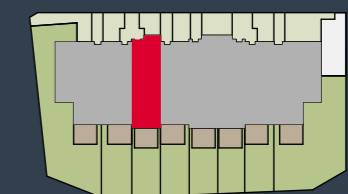
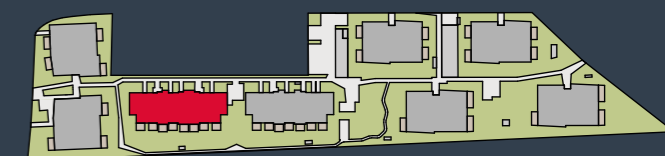


1. Obergeschoss



Erdgeschoss

Achauerstraße / Arbeitergasse  
2333 Leopoldsdorf



### VERKAUF



Luca Vogelsinger  
Tel. +43 1 7150030-3228  
Mobil +43 664 8348138  
luca.vogelsinger@rhomberg.com  
www.rhomberg.com