



City Living, Redefined.

Its three distinctive buildings house 365 elegant apartments, offering comfort, convenience, and connectivity — ideal for first-time buyers, professionals, or anyone seeking a dynamic urban base. Just

moments from the business district, universities, and cultural hotspots, residents enjoy easy access to cafés, waterfront walks, music venues, and galleries, plus premium amenities like a gym, co-working spaces, and a private media room designed for modern living.





©kqliverpool.co.uk

A Thriving Hub of Innovation and City Living

The Knowledge Quarter is one of the UK's most ambitious urban regeneration projects - a 450-acre innovation district at the heart of the city, where world-class education, healthcare, science, and technology converge with culture, creativity, and community.

Anchored by institutions such as the University of Liverpool, Liverpool John Moores University, the Royal Liverpool University Hospital, and the Liverpool School of Tropical Medicine, the area has become a magnet for talent, research, and enterprise. It's also home to over 54,000 students, making it one of the most vibrant and youthful parts of the city.

Over the past few years, it has seen over £1 billion of investment, with a further £1 billion in the pipeline, these developments are not just about buildings - they're about creating a walkable, sustainable, and inclusive urban environment that supports both economic growth and quality of life.



A 450-ACRE INNOVATION DISTRICT | HOME TO OVER 54,000 STUDENTS | OVER £1 BILLION OF INVESTMENT TO DATE | A FURTHER £1 BILLION IN THE PIPELINE





Property prices are forecast to grow by 31.2% by 2029¹



Year on year rental growth 3.8% to July 2025²



Four universities attracting more than 70,000 students each year, including over 10,000 international students³



Total office take-up in city centre increased to 318,500 sq ft in 2024, up from 283,000 sq ft in 2023⁴

1
2
3
4





Reception

With a 12-hour concierge service, residents enjoy personal assistance, secure post boxes, and a welcoming, sophisticated environment.



Residents Lounge

With stylish interiors, comfortable seating, and warm contemporary finishes, the residents lounge is an inviting place to work, relax, or entertain.



Media Room

Exclusive to residents, media room offers a sophisticated setting to unwind, entertain, and enjoy films in style.



Gym

offers residents a state-of-the-art fitness space. Featuring the latest equipment in a sleek, contemporary setting, it has been designed to support both energising workouts and mindful wellness routines. Stylishly finished it brings the convenience of premium health and fitness into everyday life.



The Apartments



Kitchens

State-of-the-art kitchens combine functionality with refined design. A two-tone style creates visual interest and white goods by Zanussi ensure a premium look and performance. Ceramic marble-effect tiles are used for both kitchen splashbacks and bathrooms, providing a seamless, elegant flow throughout the apartments.

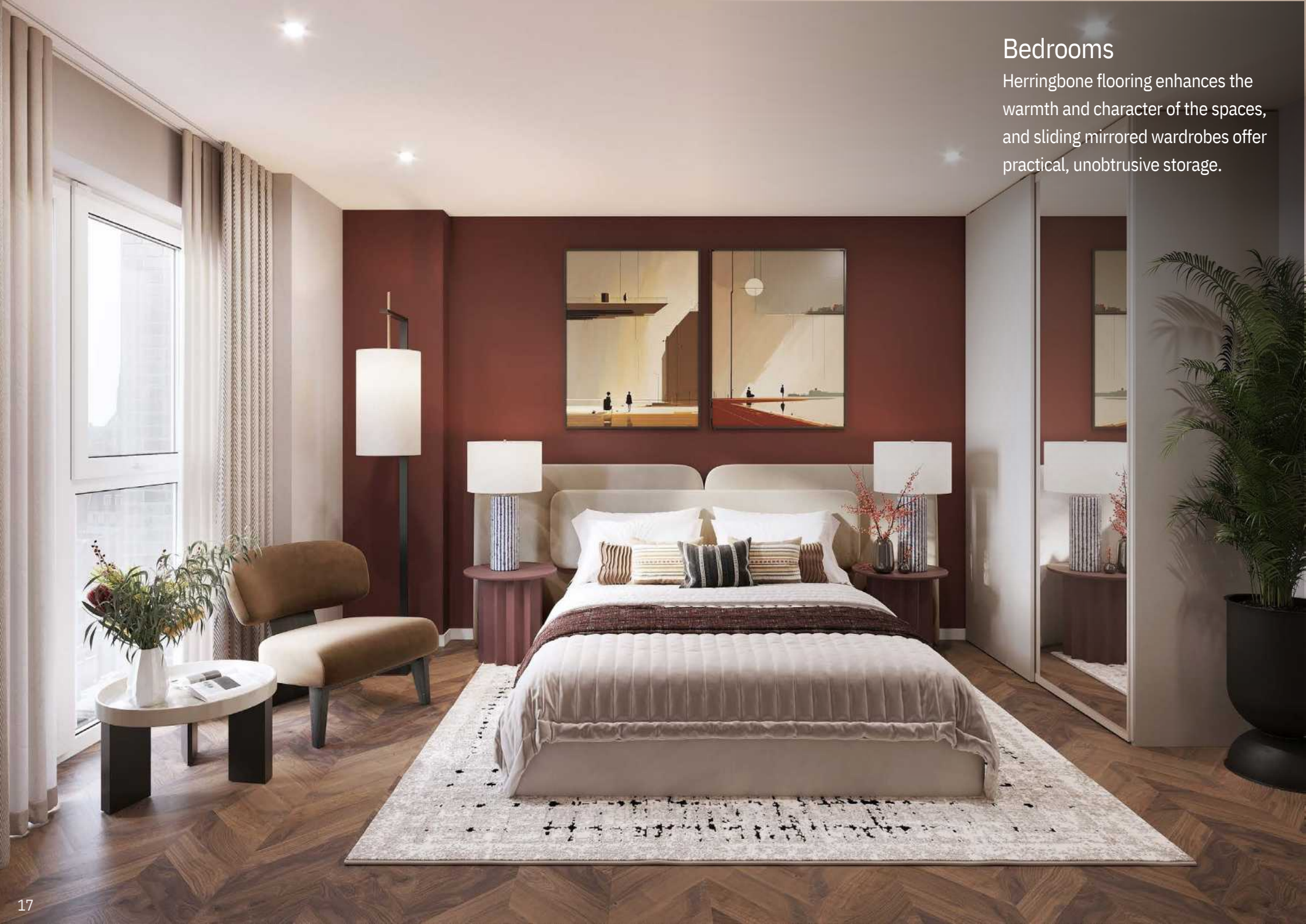


Bathrooms

Bathrooms serve as tranquil retreats, continuing the ceramic marble-effect tiles from the kitchen, paired with stylish fixtures and contemporary fittings to create a cohesive, serene environment.

Bedrooms

Herringbone flooring enhances the warmth and character of the spaces, and sliding mirrored wardrobes offer practical, unobtrusive storage.



The Aesthetic

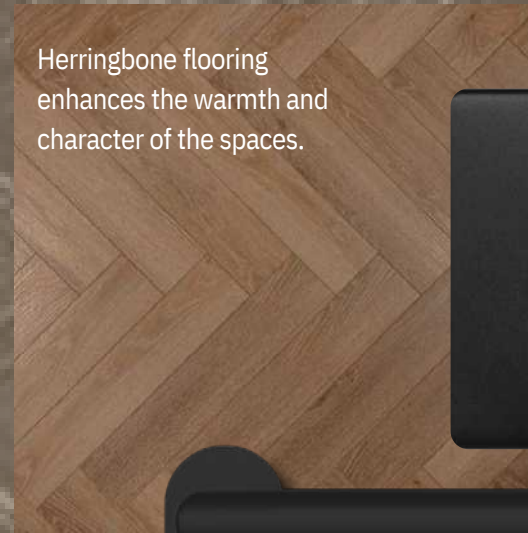


Two-tone handle-less kitchen units create a sleek, contemporary look while adding visual interest, dimension, and depth to the space.

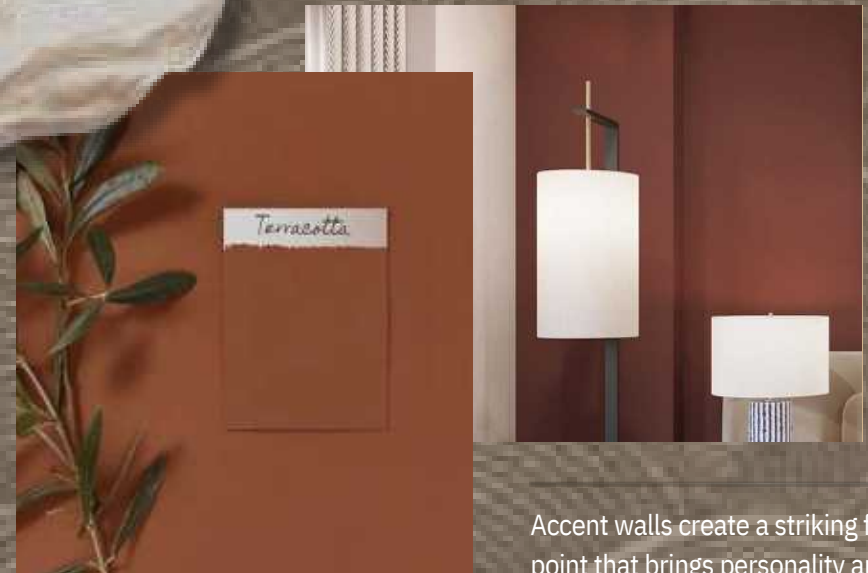
Warm neutrals fill the space with a soothing, sophisticated serenity.



Herringbone flooring enhances the warmth and character of the spaces.



Black door handles, ironmongery finishes, and matching black light switches add a bold, contemporary contrast,



Accent walls create a striking focal point that brings personality and balance to any room.

Specification

KITCHEN

- Fully fitted kitchen from a notable UK kitchen supplier
- Choice of modern handleless, high-gloss, or traditional shaker style units
- Quartz worktops with upstands
- Ceramic tile splashback to hob and preparation areas
- Handleless doors or black finish handles
- 1½ bowl stainless steel sink with black finish monobloc mixer tap
- LED under-unit strip lighting and ceiling LED lighting
- Integrated appliances, including:
 - Electric fan oven
 - Electric hob
 - Canopy extractor (black or stainless steel)
 - 60/40 fridge-freezer
 - Combo washing dryer to 1 beds and 2 beds and dish washer

GROUND FLOOR WC

(Where Applicable)

- Dual-flush WC with soft-close seat
- Wall-hung or semi-pedestal basin
- Black finish tap
- Ceramic tile flooring
- Heated towel rail

BATHROOMS & EN-SUITES

- Whitesanitaryware including:
 - Full-size bath with high-quality GRP panel
- Dual-flush WC with soft-close seat
- Basin with pedestal or semi-pedestal
- Black finish taps and shower fittings
- Thermostatic bar mixer shower above bath
- Fixed clear glass shower screen with hinged section
- Ceramic tile flooring
- Full-height wall tiling to bath/shower areas
- Half-height ceramic tiling to basin splashbacks
- Chrome or black heated towel rail
- Mirror above basin and toilet roll holder

FLOORING

- Luxury Vinyl Tile (LVT) in a herringbone design throughout – Amtico or similar
- Ceramic tile flooring to all bathrooms and WCs

BEDROOMS

- Built-in wardrobes to master bedrooms
- Matching herringbone flooring throughout
- USB charging sockets (x2 per bedroom)
- TV point to all bedrooms

INTERNAL DOORS & IRONMONGERY

- Solidcore veneer entrance door
- Quality timber or veneer internal doors – light oak, grey or similar
- Black finish contemporary door handles
- Stainless steel door stops where required

WINDOWS & GLAZING

- White or anthracite finish windows
- Clear glazing throughout; obscured glazing to bathrooms and WCs
- Keyless locking handles to escape windows

HEATING & HOT WATER

- Air source heat pump with hot water cylinder
- Electric thermostatic panel heaters throughout
- Programmable digital heating controls

LIGHTING

- LED ceiling spotlights to kitchens and bathrooms
- LED under-unit lighting in kitchens
- Pendant lighting to bedrooms and living areas
- LED ceiling/wall light to storage areas

ELECTRICAL & MEDIA

- Brushed steel sockets and switches
- USB charging sockets to living room (x1) and all bedrooms (x2 each)
- TV and Sky Q points to living room and bedrooms
- Fibre broadband connection to each home
- BT point in living room
- Fused spur for future burglar alarm
- Extractor fans to kitchens, bathrooms, and WCs
- Audio/video door entry system
- Key fob or card access control

COMMUNAL AREAS

- Cycle storage
- Two, eight person lifts
- Chrome or brushed steel finish LED lighting throughout
- Secure, individual lockable mailboxes
- Carpet tiles to lobbies and main stairwells
- Painted non-slip finish to secondary stairs
- CCTV installed in entrance lobbies
- Security locks fitted to all shared-access and service rooms

DECORATION

- Smooth plastered walls and ceilings
- Two-coat white emulsion to walls and ceilings
- Woodwork finished in white satin or gloss



Dining out offers everything from buzzing street-food halls to elegant brasseries. In the Baltic Triangle, Baltic Market is a must-visit for casual bites, craft beers and live music, while Hawksmoor in the India Buildings serves up exceptional steaks in a stylish art-deco setting.



Savour the City

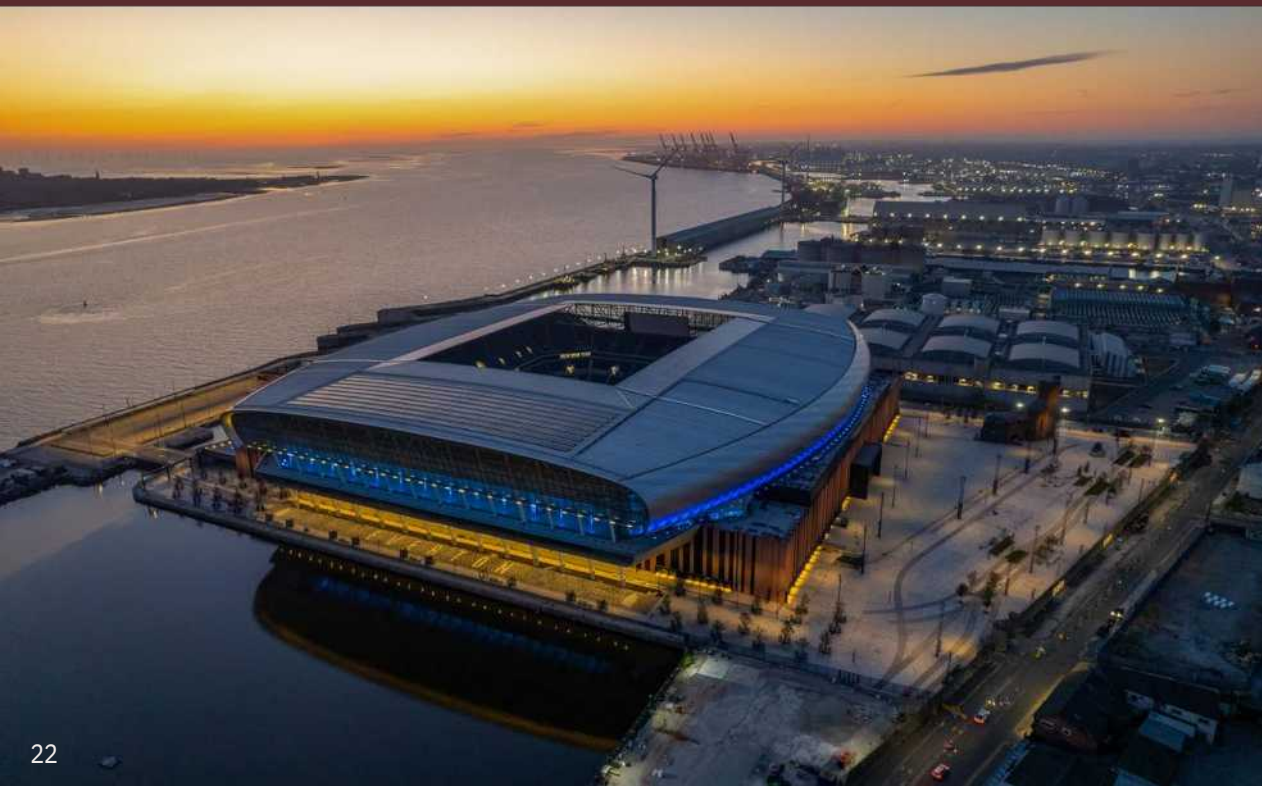


The Ivy adds a touch of glamour with its vibrant bar and crowd-pleasing menu. For something different, Duke Street Market offers multiple kitchens under one roof. After dinner, soak in Liverpool's spirited nightlife, where locally brewed beers, inventive cocktails and friendly crowds make every stop memorable.



Culture & Sport

culture is rich and full of character, celebrated through its art, theatre, and sport.



Retail Therapy

Shopping offers an exciting mix of style, variety, and atmosphere.

At the heart of the city's retail scene is Liverpool ONE, a vibrant open-air shopping complex packed with over 170 stores, restaurants, and entertainment venues. Here, shoppers can browse everything from high-street favourites to luxury brands, making it a must-visit destination for locals and tourists alike.



For those with a taste for designer fashion, Flannels stands out with its sleek interiors and impressive collection of premium labels such as Gucci, Balenciaga, and Off-White. Meanwhile, John Lewis provides a more classic department store experience, offering quality homeware, beauty products, and fashion under one roof. Together, these destinations make a dynamic and stylish shopping hub in the North West.





