

# Pferdegut Schloss Treffen



## APARTMENT DETAILS

PRIVATE AND CONFIDENTIAL

1 JANUARY 2024



The Renaissance Property extends to 6,000 m<sup>2</sup> and consists of stables, coach house and residential buildings. The historic stables with rustic arches and pillars of marble from Krastal, dates from the 16th century.

There are further buildings with a small indoor riding school and barn with 2 stables and storage for hay or machinery. On the other side of the stables there is a further hay barn. There are two silos which are being used as feed and tack rooms.

A large loft above the stables, which extends to about 90 mtrs, provides storage for tractors and machinery. Entry is gained by a ramp at the end of the building.

The "Marhaus" is a residential building which contains 5 apartments and 2 basements. There is also a coach house comprising of 2 bedrooms, lounge, kitchen and bathroom. There are 3 more rooms which need upgrading included in the grounds. There are two secluded gardens, one by the coach house and another with old trees, beautiful views and is fenced with a castle wall.

## Description of existing buildings

Below you can see the beautiful columns and arches of the inside of the stable block



### Castle Carriage House

Total size is 36mtrs by 7 mtrs partially converted to a living space consisting of kitchen, bathroom, lounge, 2 bedrooms. The kitchen is 2 years old and the living space has been recently decorated.



# Apartment Building "Marhaus"

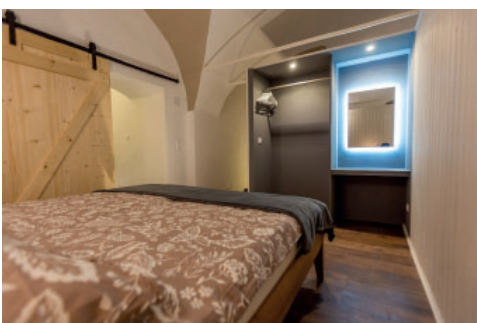
Ground Floor

3 Apartments

The Stables apartment - 2 bedrooms, lounge/kitchen/diner, bathroom (90 sq mtrs)



Old Kitchen apartment - 1 bedroom area, lounge/kitchen/diner, bathroom (51 sq mtrs)



Apartment 3 - 1 Bedroom, lounge/kitchen/diner, bathroom (50 sq mtrs)



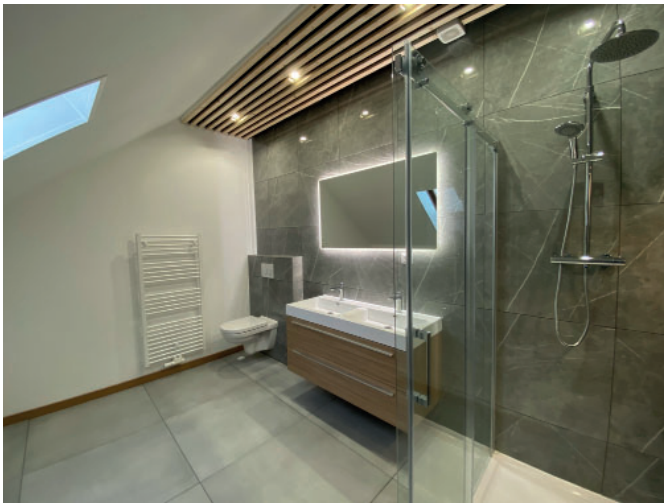
First Floor

2 Apartments

Mountain View apartment - 1 bedroom, kitchen/diner, lounge, bathroom (68 sq mtrs)



Forest View apartment - 1 bedroom, lounge/kitchen/diner, bathroom (64 sq mtrs)



2 Basements

Basement 1 - pellet boiler Froiling, hot water tank, pellet storage. (47 sq mtrs)

Basement 2 - Access from outside, partially converted to apartment work in progress. (36 sq mtrs)

