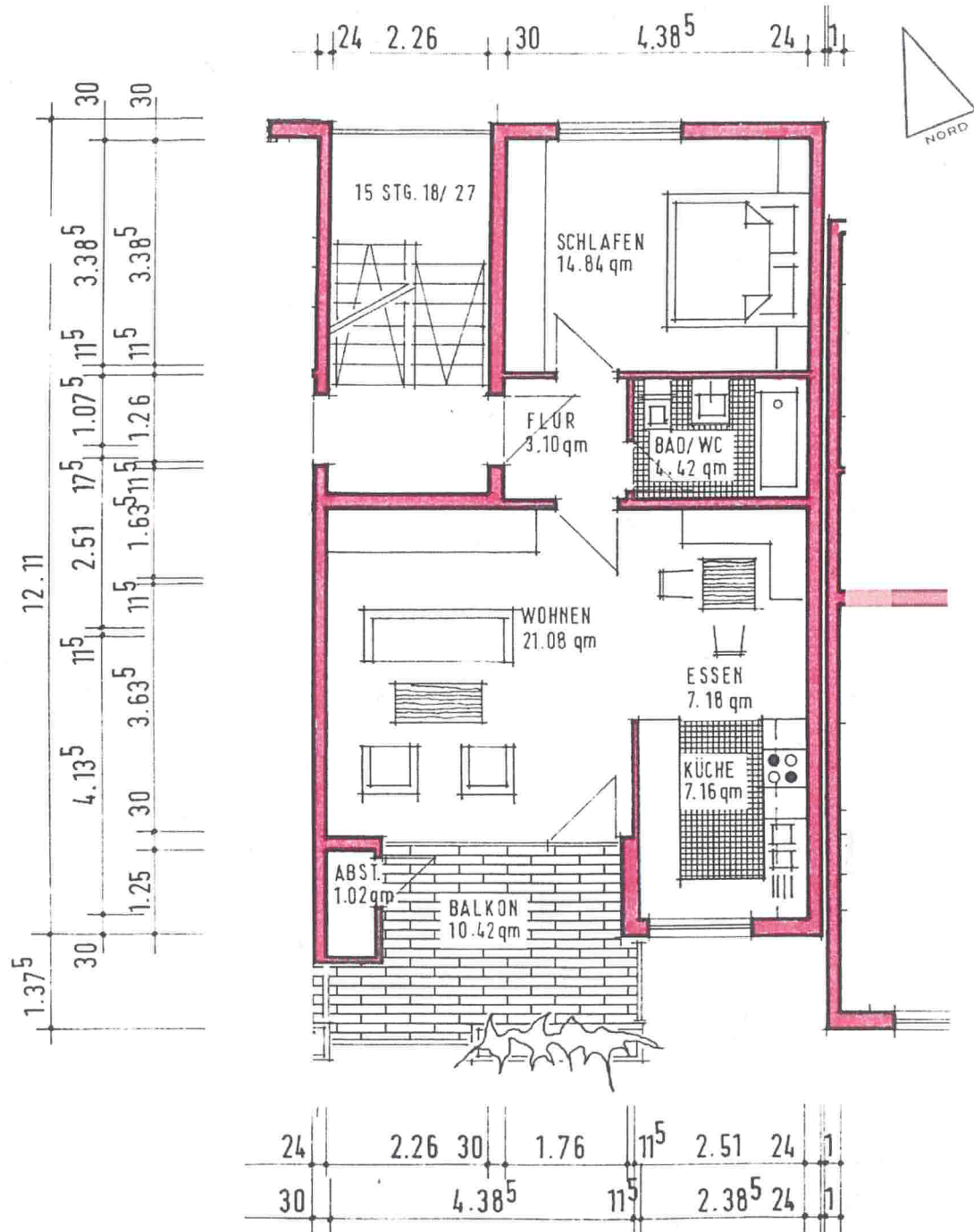


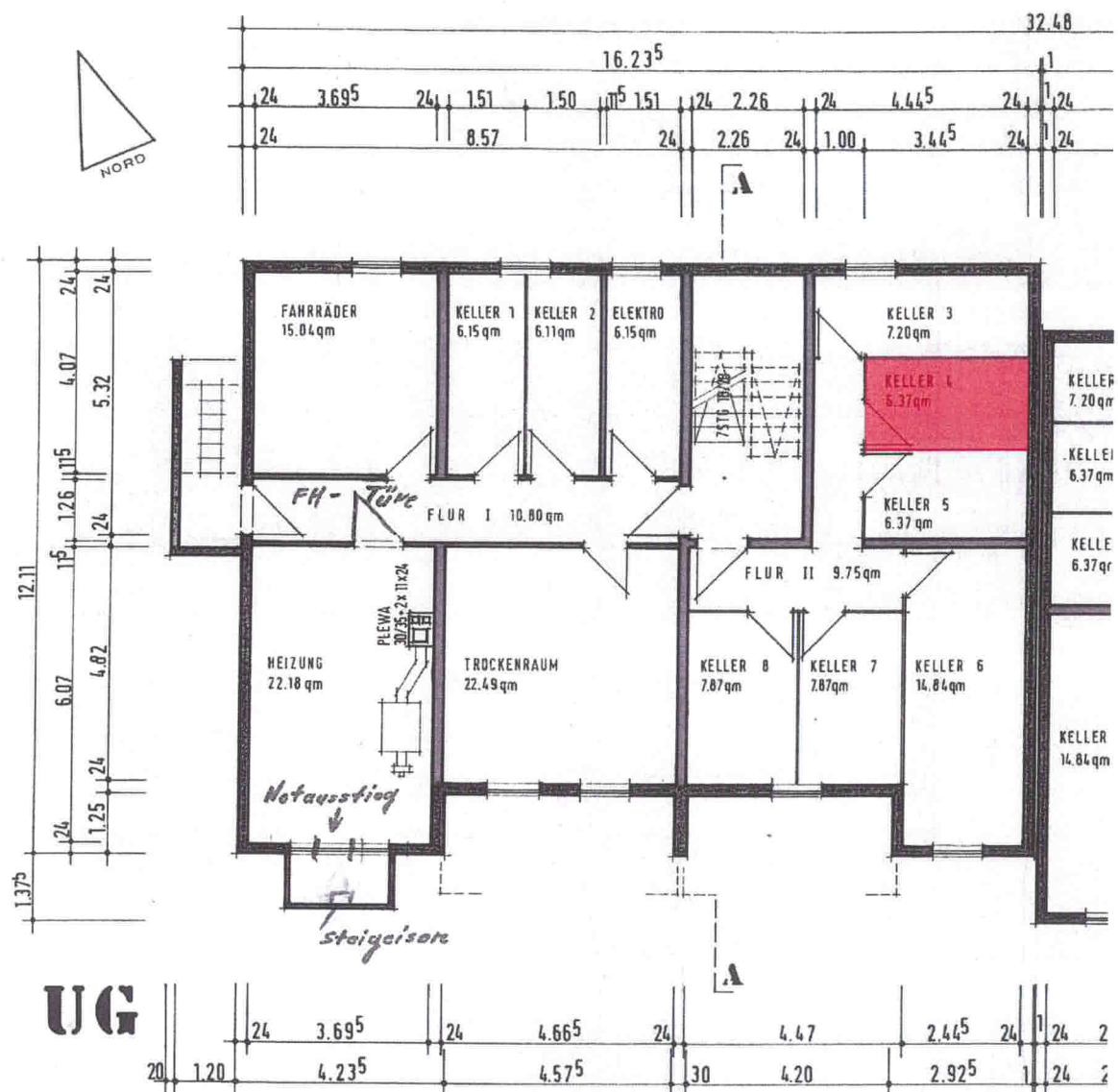
## 2.3.2 Sondereigentum Wohneinheit Nr. 27

Grundriss Wohnung:



Quelle: Bauakte, Plan von 1979 (Ausschnitt)  
 Maßstab: Ca. im 1:100 im 1:1 Printausdruck  
 Hinweis: Flächenangaben sind Rohbaumaße

## Grundriss UG (Haus Grenzstraße 27)



Quelle: Bauakte, Plan von 1980  
 Maßstab: Circa 1:150 im 1:1-Ausdruck

An architectural line drawing of a two-story house. The house features a steep gabled roof with vertical siding. The upper story has two small, square windows. The lower story has a long, horizontal window with multiple panes. To the right of the main body of the house is a dark, vertical section with several small, square windows. The house is surrounded by stylized trees and shrubs, and a small figure of a person is visible in the foreground on the left.

This architectural sketch shows a two-story building facade. The left side features a balcony with three levels of planters. The right side has a similar balcony structure. A red rectangle highlights a window unit on the right side of the building. The sketch includes stylized trees and figures of people for scale.

**Quelle:** Bauakte, Pläne von 1980  
**Maßstab:** Circa 1:250 im 1:1-Ausdruck

**Maßstab:** Circa 1:250 im 1:1-Ausdruck