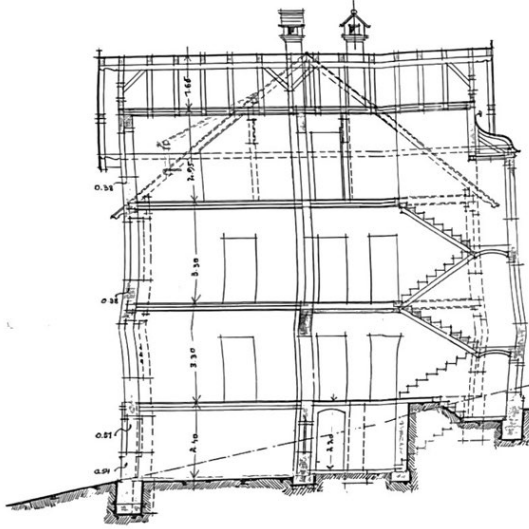
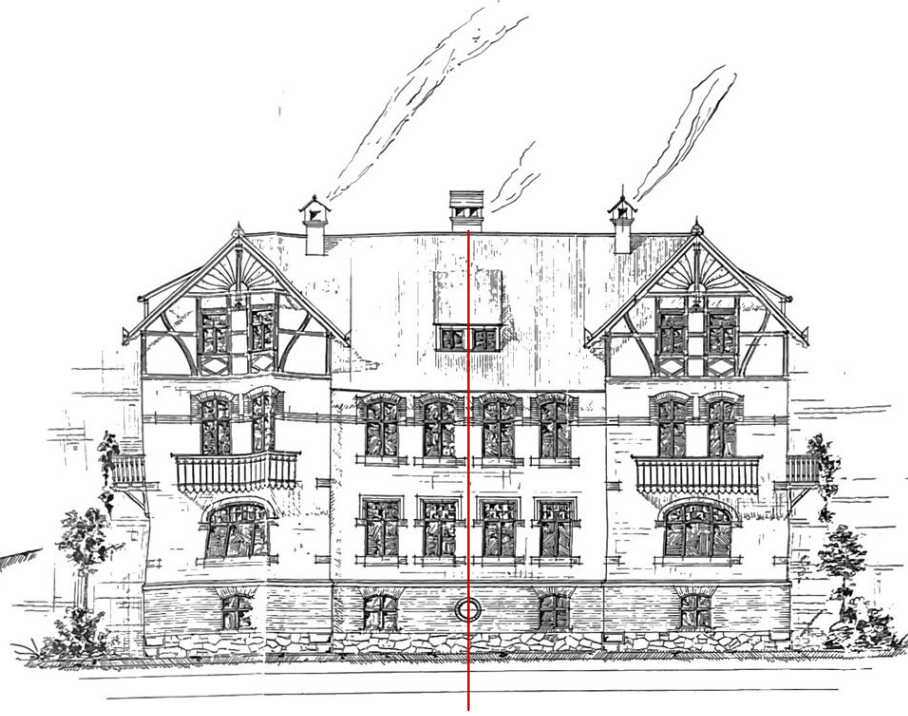


ZEICHNUNG ZUM NEUBAU EINES BERNTENWOHNHAUSES FÜR DIE PATENTPAPIERFABRIK ZU PENIG. ABTEILUNG: WILSCHTAL.

FLUR-SCHLÖSSCHEN-PORSCHEENDORF. B.G. Nr. 101.



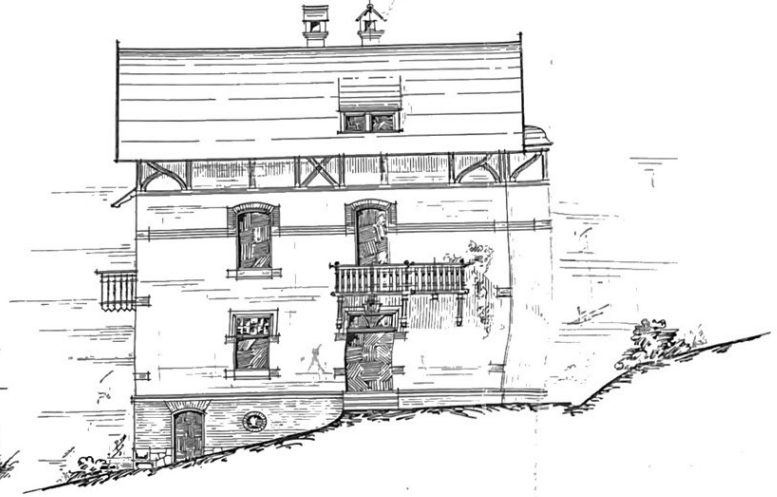
SCHNITT R-B



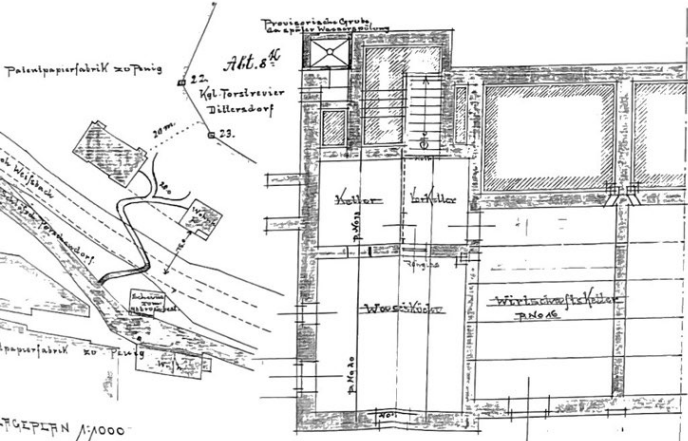
Nr. 7

ANSICHT

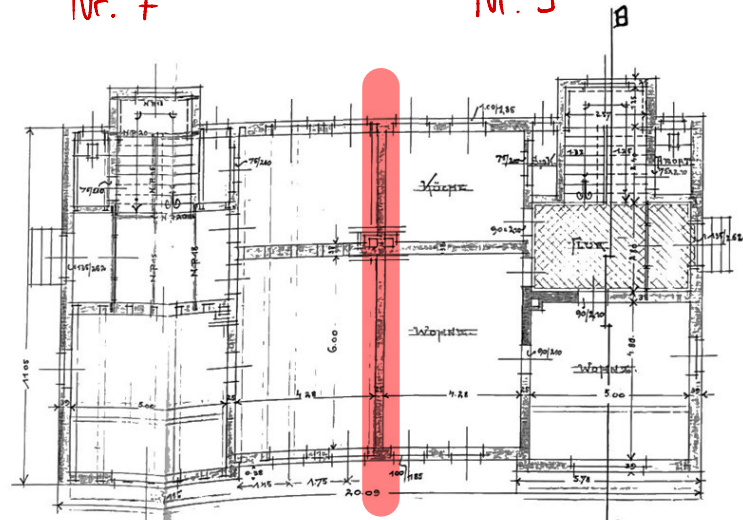
Nr. 9



SEITEN-ANSICHT

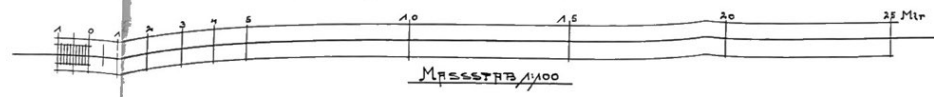


KELLERGESCHOSS

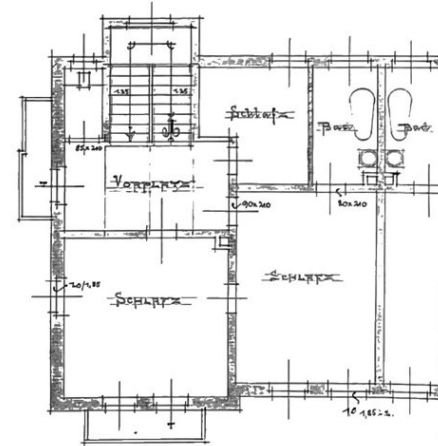


ERDGESCHOSS

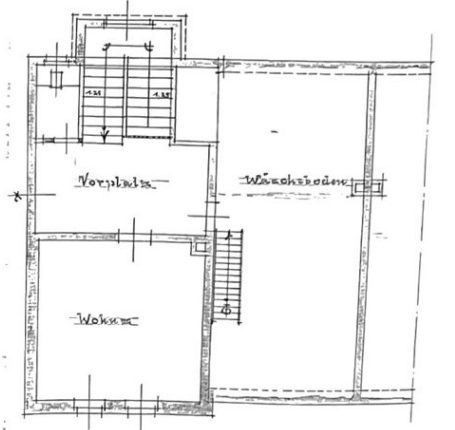
A.



MASSSTAB 1/100



OBERGEHOSS



DACHGESCHOSS

PATENTPAPIERFABRIK ZU PENIG

BEUHER: *Schmidt & Co.*
 FÜHRUNG: *Karl Oetrich*
 Penig, den 14. Januar 1904.
 202 1002
M. H. H. H.