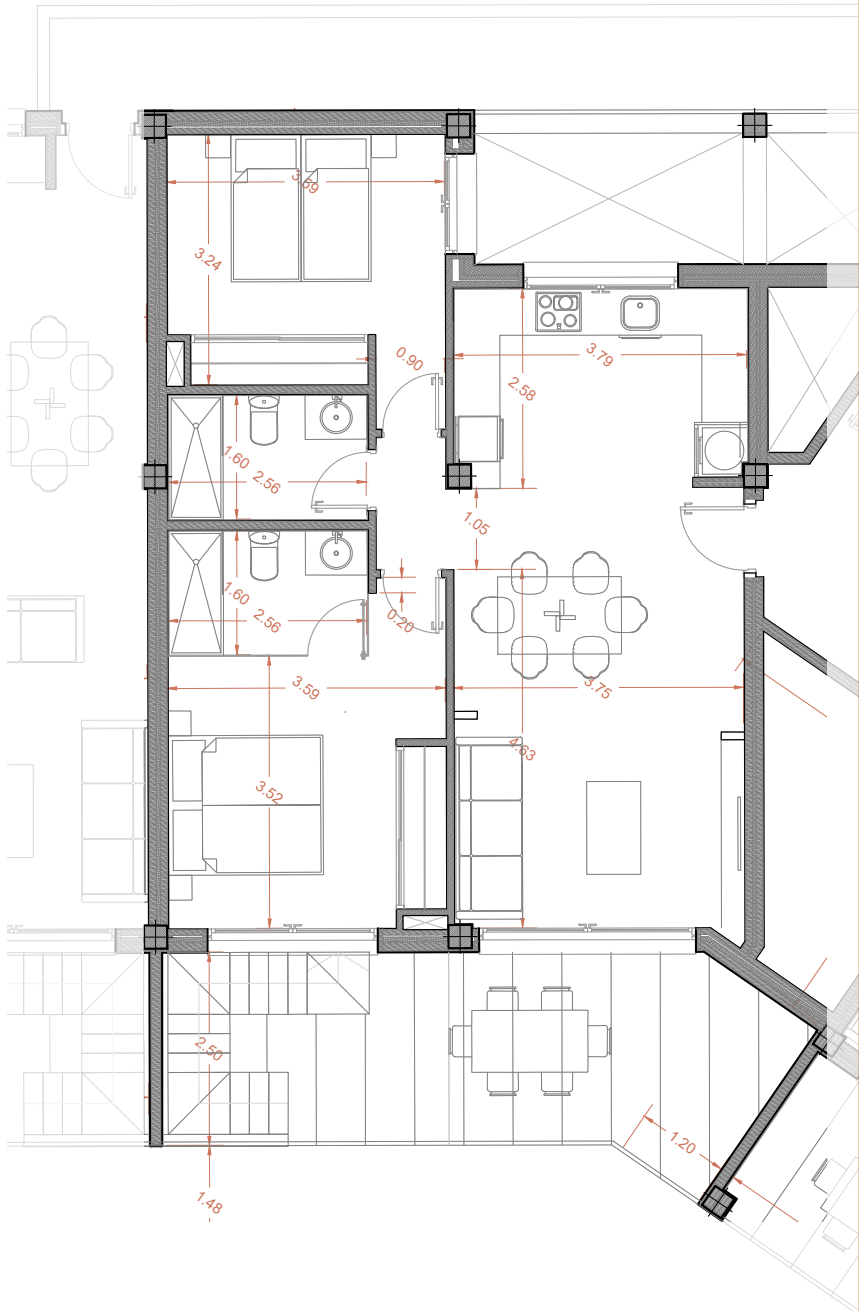
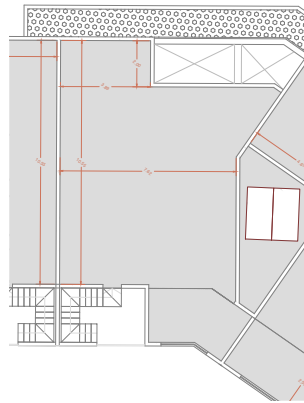


# HOUSE N.38 (TYPE B3) 4TH FLOOR - BLOCK 1

THE IMAGES REFER TO APPROXIMATE SOLUTIONS AND ARE NOT BINDING WITH THE FINAL PROJECT



**4TH FLOOR TYPE B3  
BLOCK 1 HOUSE 38**



BUILT SURFACE	95,60 M2
LIVING ROOM KITCHEN	30,80 M2
BEDROOM 1	13,50 M2
BEDROOM 2	11,60 M2
BATHROOM 1	4,10 M2
BATHROOM 2	4,10 M2
CORRIDOR	1,65 M2
TERRACE 50%	9,80 M2
<b>TOTAL USABLE SURFACE</b>	<b>75,15 M2</b>
<b>SOLARIUM</b>	<b>86,00 M2</b>

1 X BASEMENT PARKING

