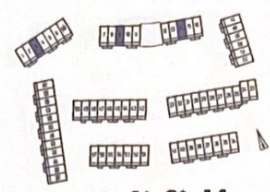


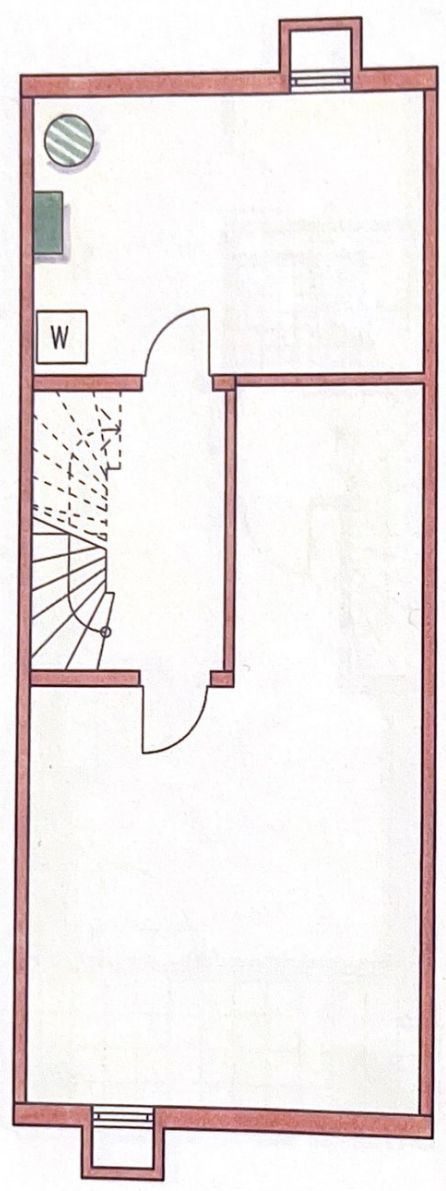
# BERLIN WITTENAU - SPIESSWEG \* ATELIERMITTELHAUS TYP 2

Untergeschoß	m² Wfl.	m² nb. Fl.
Keller		31,6
Hausanschlußr.		15,7
Flur		5,9
<b>Summe UG</b>		<b>53,2</b>

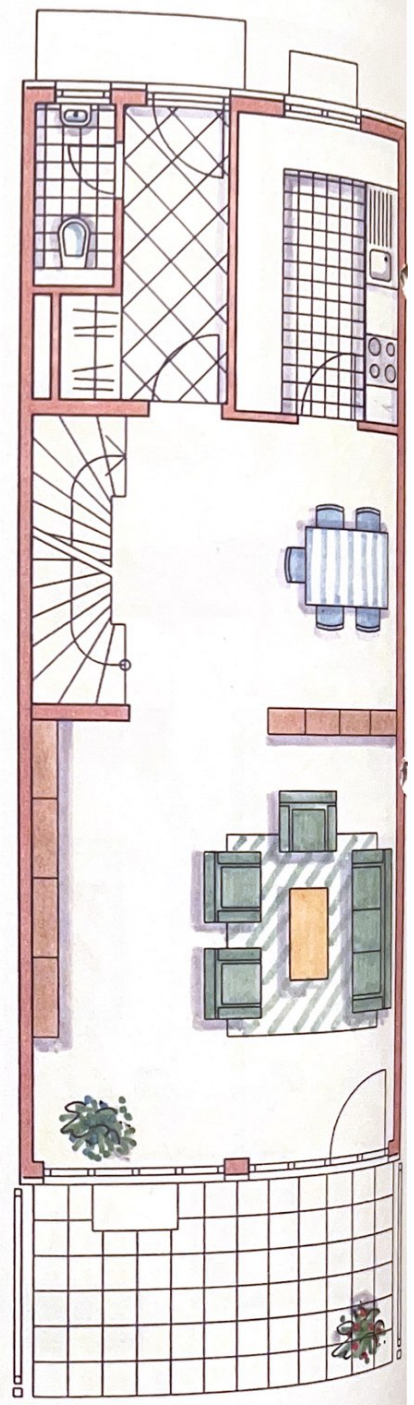


**Häuser Nr. 3\*, 9\*, 14**  
(Häuser mit \* spiegelbildlich)

Erdgeschoß		
	m² Wfl.	m² nb. Fl.
Wohnen	36,9	36,9
Küche	8,3	8,3
Flur	5,1	5,1
WC	1,7	1,7
Terrasse		11,0
<b>Summe EG</b>	<b>52,0</b>	<b>63,0</b>



UG



EG