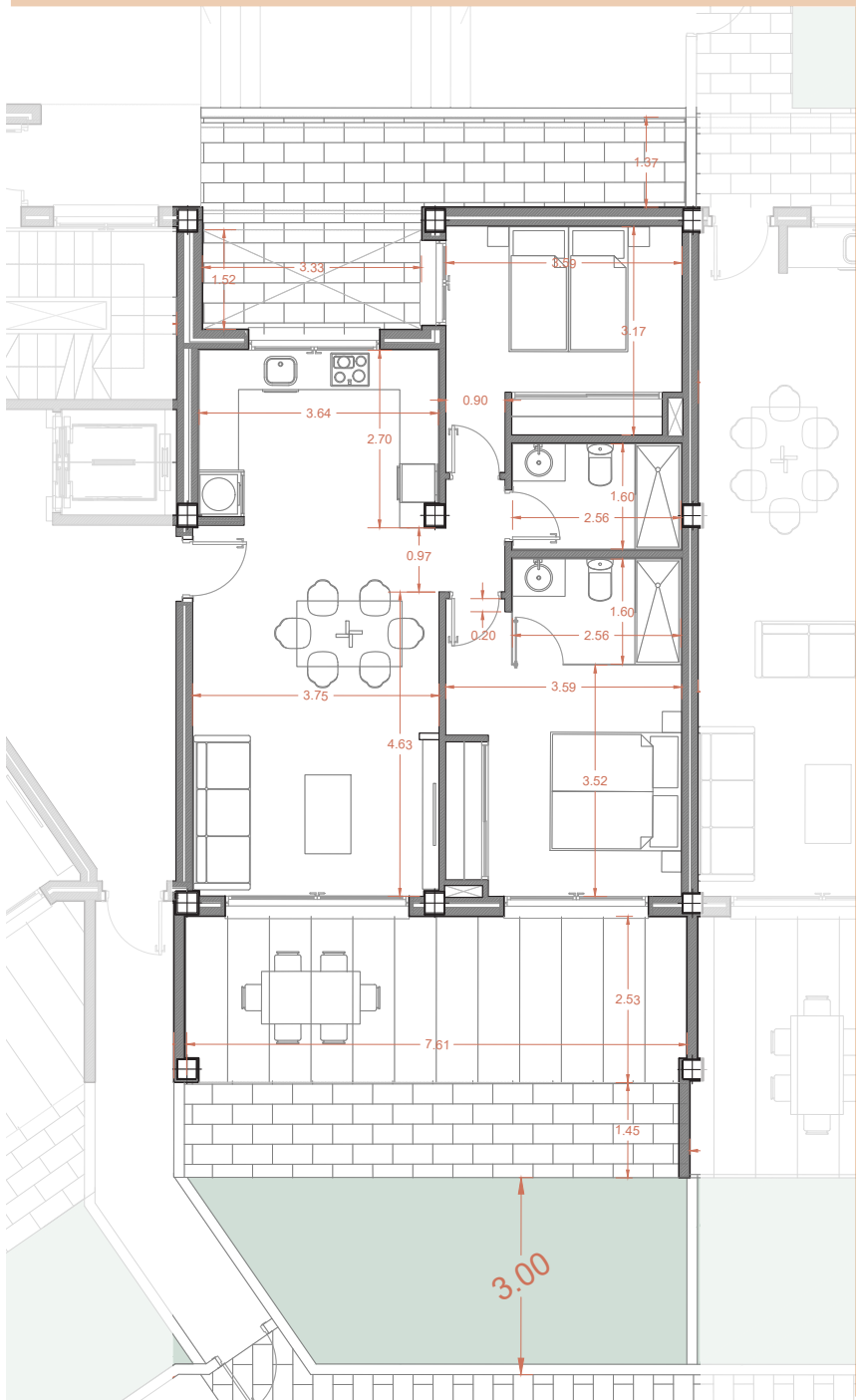


HOUSE N.7 (TYPE B1) GROUND FLOOR - BLOCK 1



PLOT INCL. HOUSE 146_m2



1 X BASEMENT PARKING



THE IMAGES REFER TO APPROXIMATE SOLUTIONS AND ARE NOT BINDING WITH THE FINAL PROJECT

BUILT SURFACE 95,00 M2

LIVING ROOM KITCHEN 30,40 M2

BEDROOM 1 13,50 M2

BEDROOM 2 11,60 M2

BATHROOM 1 4,10 M2

BATHROOM 2 4,10 M2

CORRIDOR 1,65 M2

COVERED TERRACE 50% 9,50 M2

TOTAL USABLE SURFACE 74,85 M2

EXT.TERRACE + GARDEN 16M2 + 11,20M2 + 18M2

