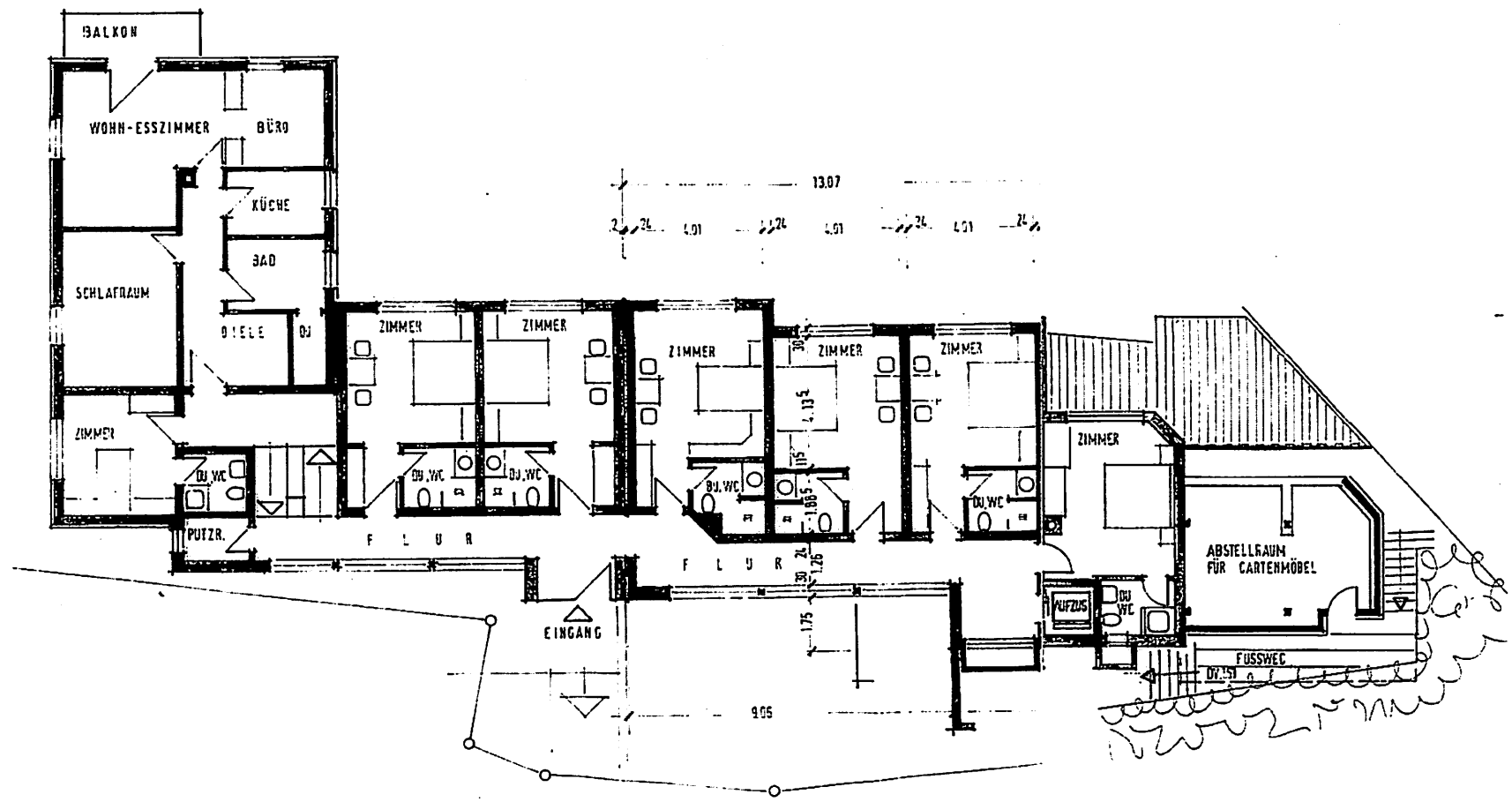
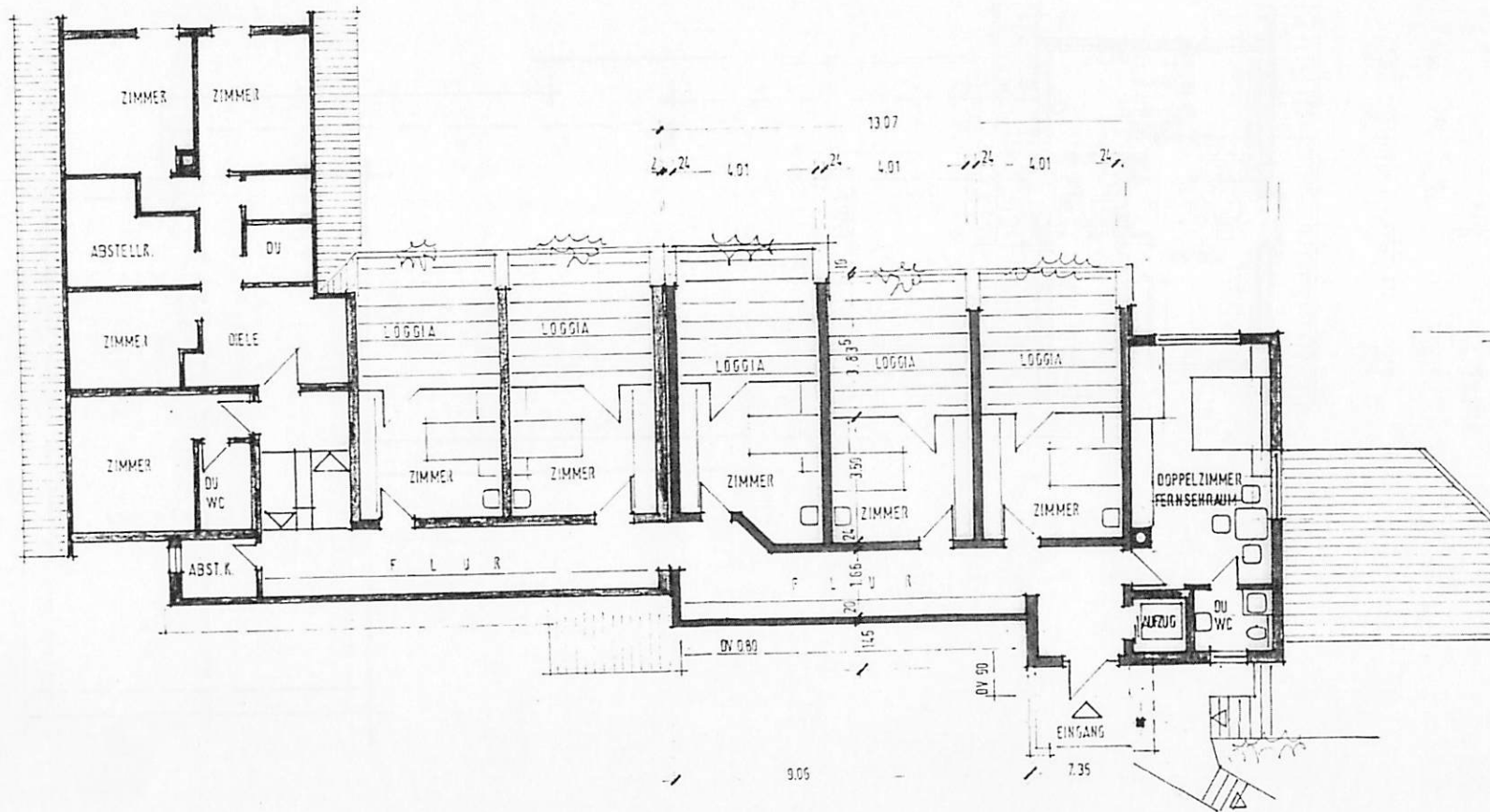


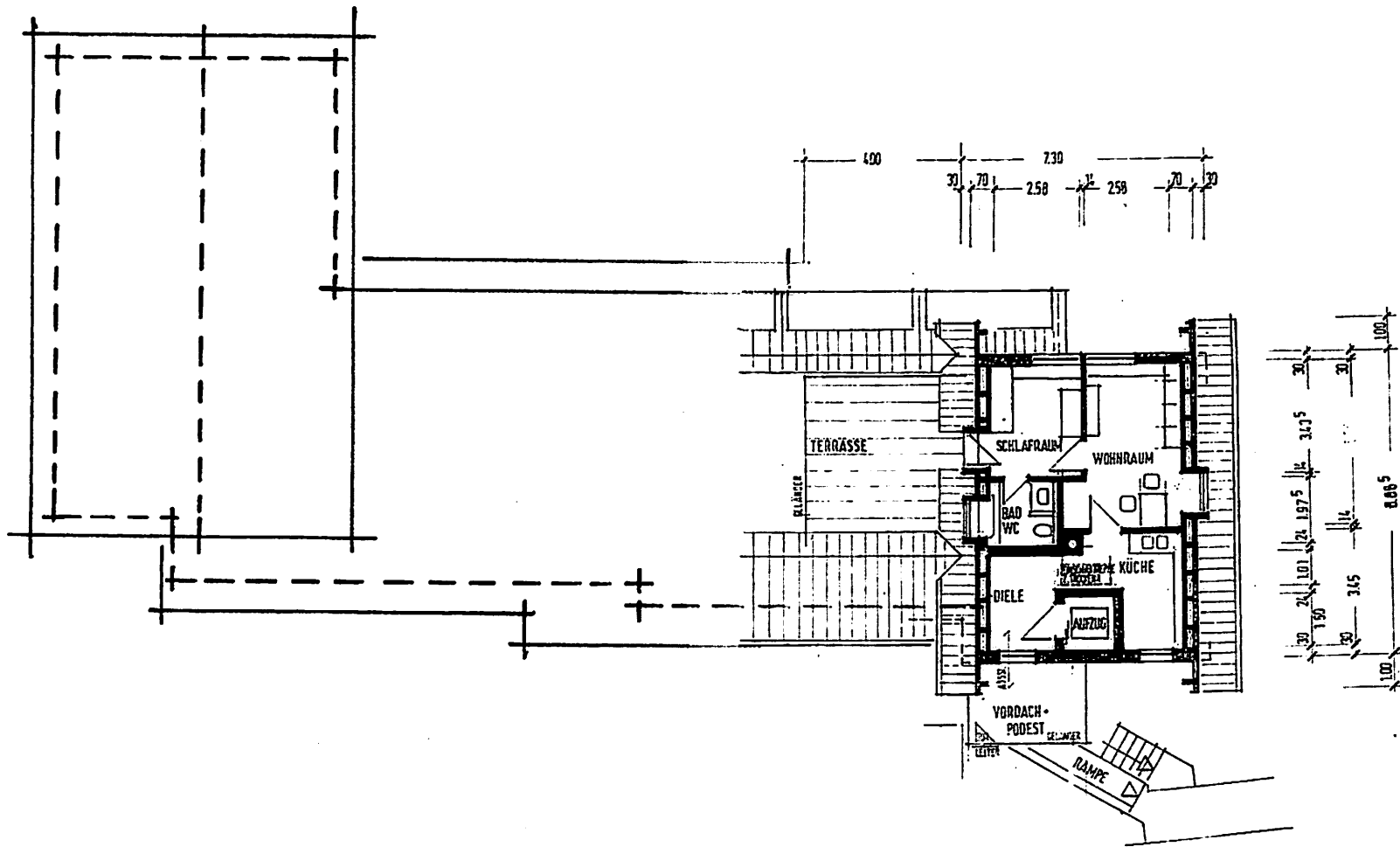
Gästehaus Hotel „Zum Wasserfall“ - Grundriss Erdgeschoss - M = 1:200 - Architekten Hopf & Pfäffle – 15.3.2010



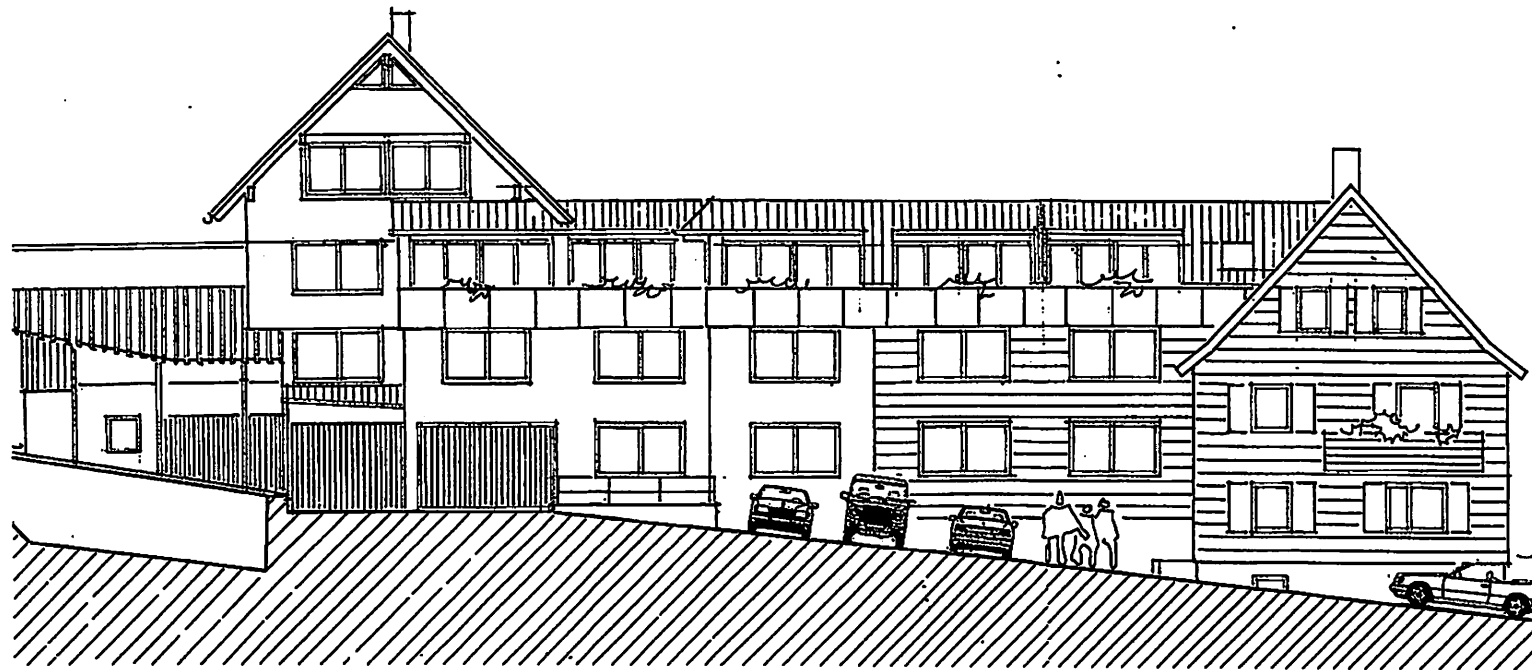
Gästehaus Hotel „Zum Wasserfall“ - Grundriss 1. Obergeschoss - M = 1:200 - Architekten Hopf & Pfäffle - 15.3.2010



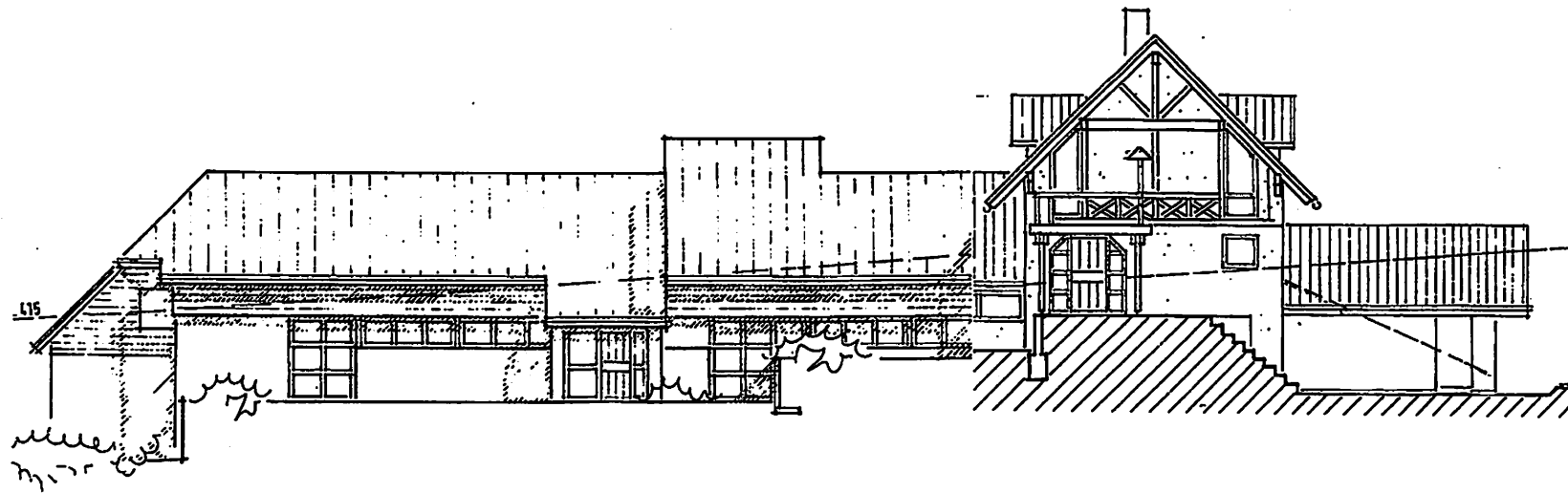
Gästehaus Hotel „Zum Wasserfall“ - Grundriss 2. Obergeschoss - M = 1:200 - Architekten Hopf & Pfäffle - 15.3.2010



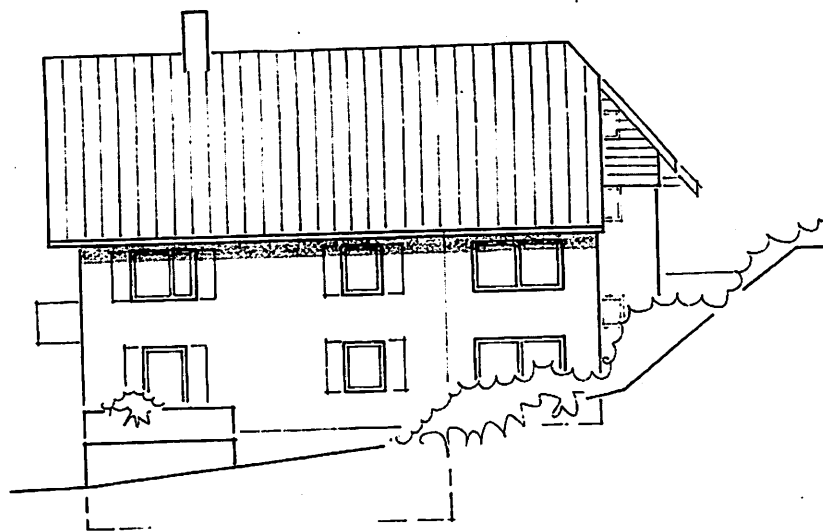
Gästehaus Hotel „Zum Wasserfall“ - Grundriss Dachgeschoß - M = 1:200 - Architekten Hopf & Pfäffle - 15.3.2010



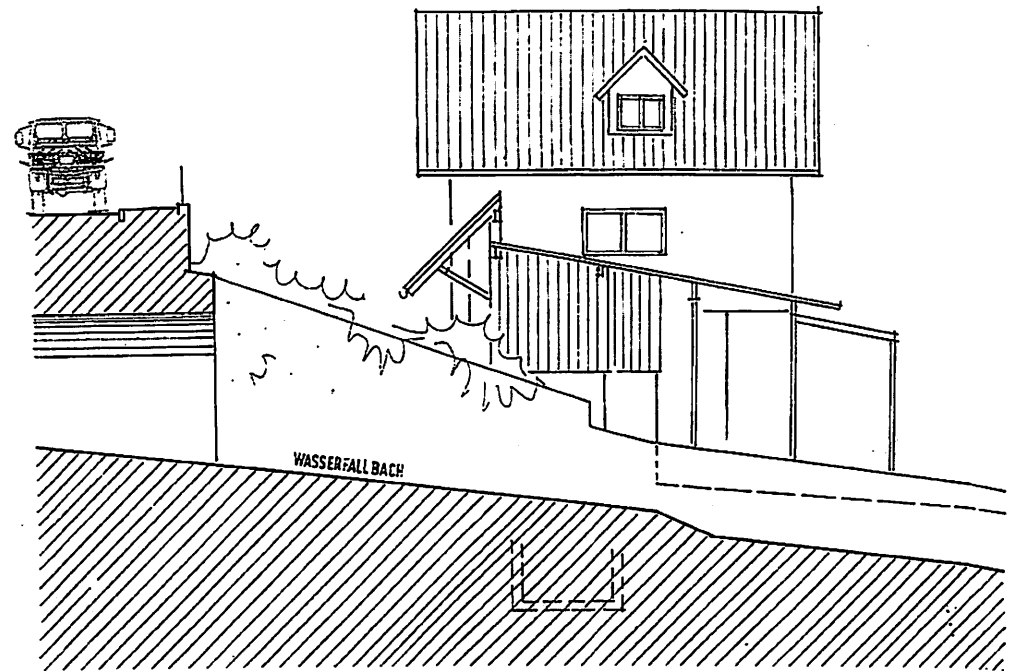
Gästehaus Hotel „Zum Wasserfall“ - Ansicht Südseite - M = 1:200 - Architekten Hopf & Pfäffle – 15.3.2010



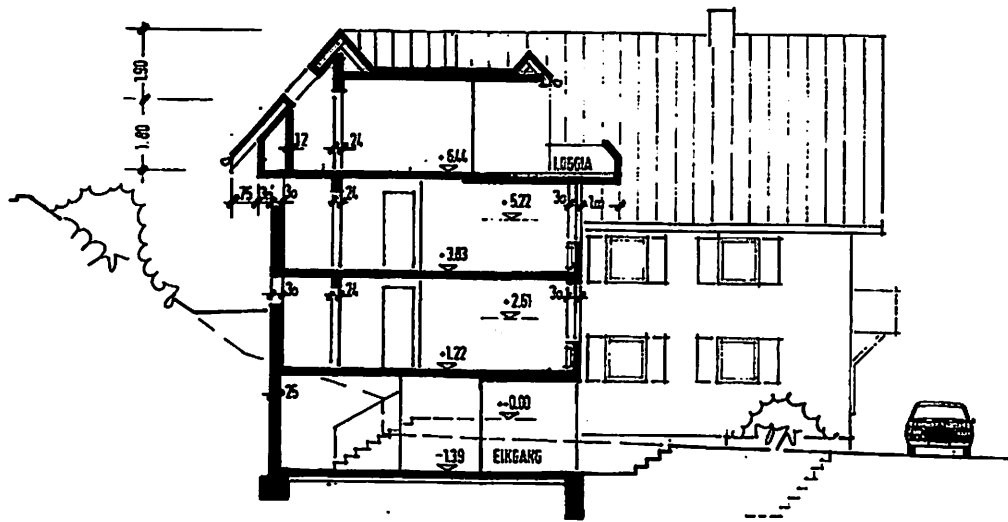
Gästehaus Hotel „Zum Wasserfall“ - Ansicht Nordseite - M = 1:200 - Architekten Hopf & Pfäffle - 15.3.2010



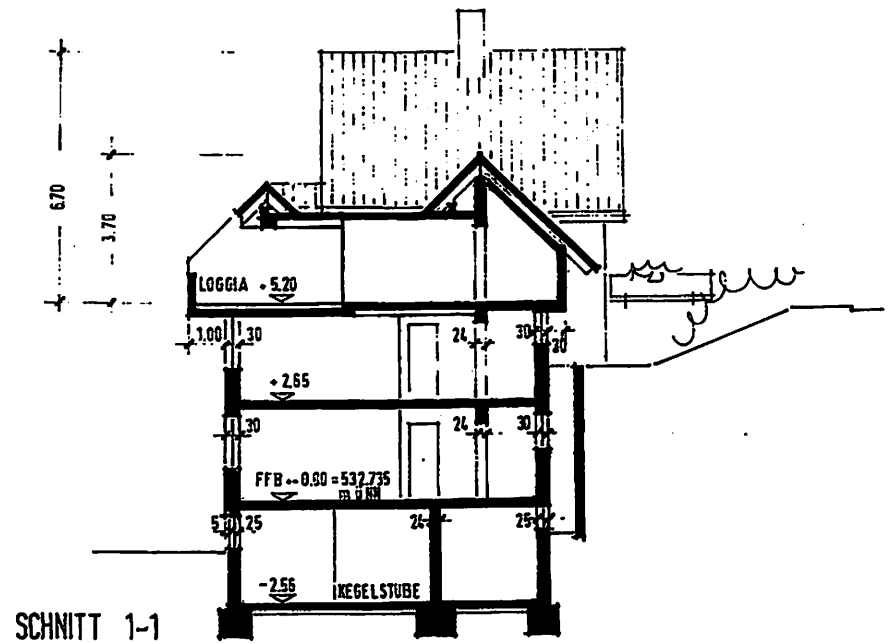
Ostseite



Westseite



SCHNITT 2-2



SCHNITT 1-1