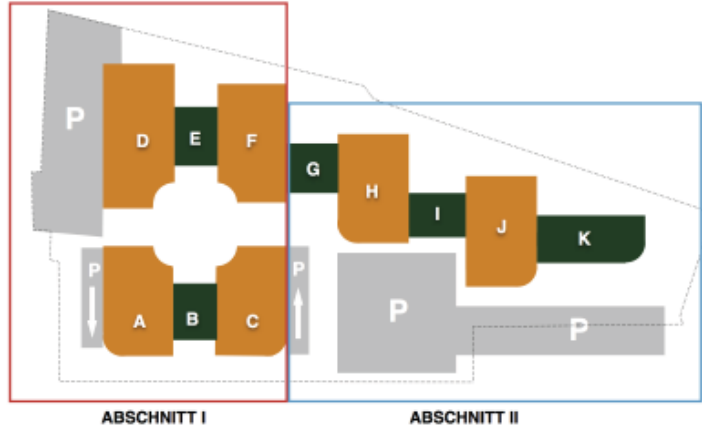
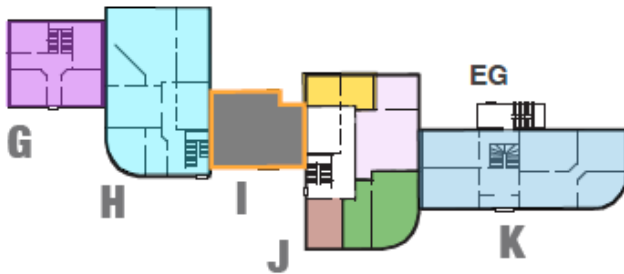


# KSC Moers



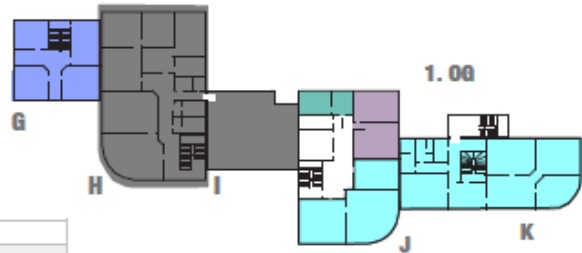
G	m²
Dr. Kuppelberg	188,42
H	
Walds (KOH) Ges. 01 04 21	224,08
I	
Schneider Consulting	138,00

J	m²
Pfizer	80
Helmigler	33,40
Schulte	77,87
City Call	28
K	
Rademacher	198



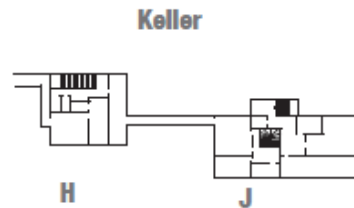
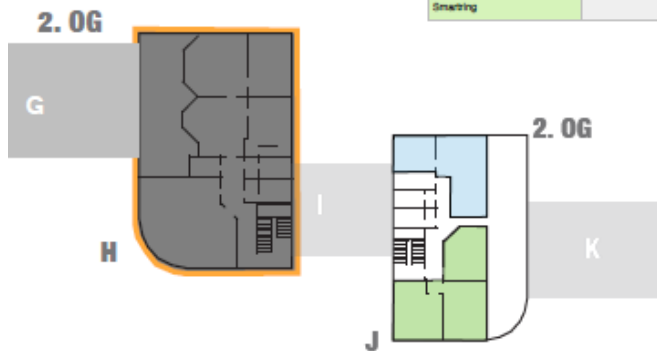
G	m²
Dr. Kuppelberg	188,42
H	
Walds	224,08
I	
Walds	138,00

J	m²
Pfizer	80,00
Helmigler	33,40
Schulte	77,87
K	
Rademacher	198,00

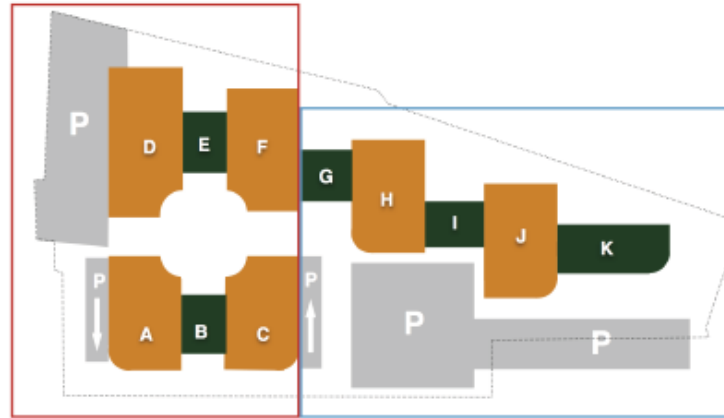


H	m²
Lehrerbund	149,02

J	m²
Alpha24	60,7
Smartering	80



# KSC Moers

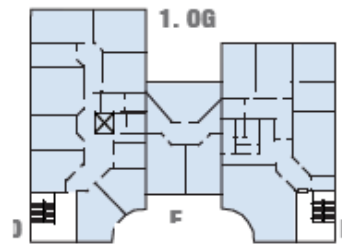


ABSCHNITT I

ABSCHNITT II



A	m²
my Solution	113,94
3&D Beratung	54,98
AWW Group GmbH LG	82,85
B	
Verwaltung	
C	
Green Jet	22,85
Hilger	26,35
Mr. Storz	48
Dr. Forsthe	27,11
Union Hoch	72,00



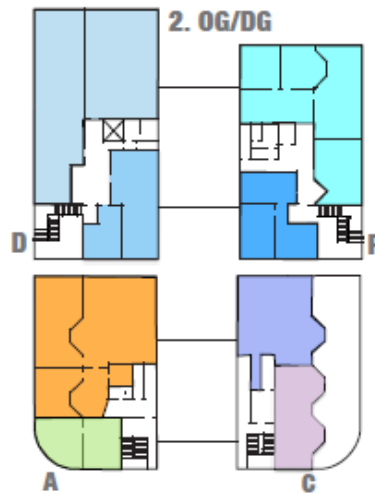
A	m²
Kältemanagerzent	100
Leerstand	65
B	
Grobe	78
C	
Grobe	
Elektron	77,01
Carbon Core	43,00
Stoek	6,00



D	m²
BF Quadrat	263,48
E	
Dreit	150
F	
Kreuzer	180,96



D	m²
RA Inkasso	290
E	
Van der Valk GmbH	105,80
F	
Van der Valk GmbH	215



A	m²
Leerstand	104,65
J.Kahle	30
C	
Stoek	104,71
Probusness	65

D	m²
TACSPartner	185,16
TACSPartner	84,61
F	
Apptehen	60
Köster Heutschulte	70

Kartenausdruck



ca. 1 : 654

© LAND NRW (2017) - Lizenz dl-de/by-2-0 (www.gc)  
Für Geodaten anderer Quellen gelten die Nutzungs- und L

9.6.2017 12:41