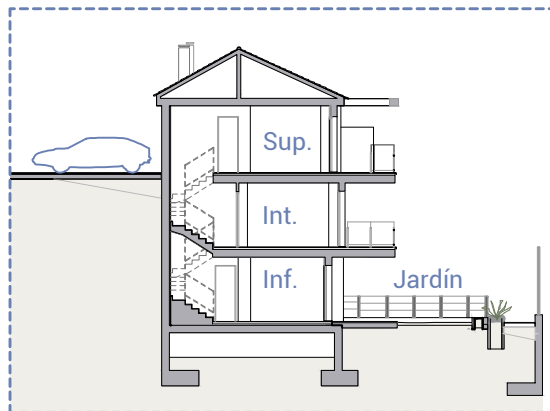


VIVIENDA HOUSE

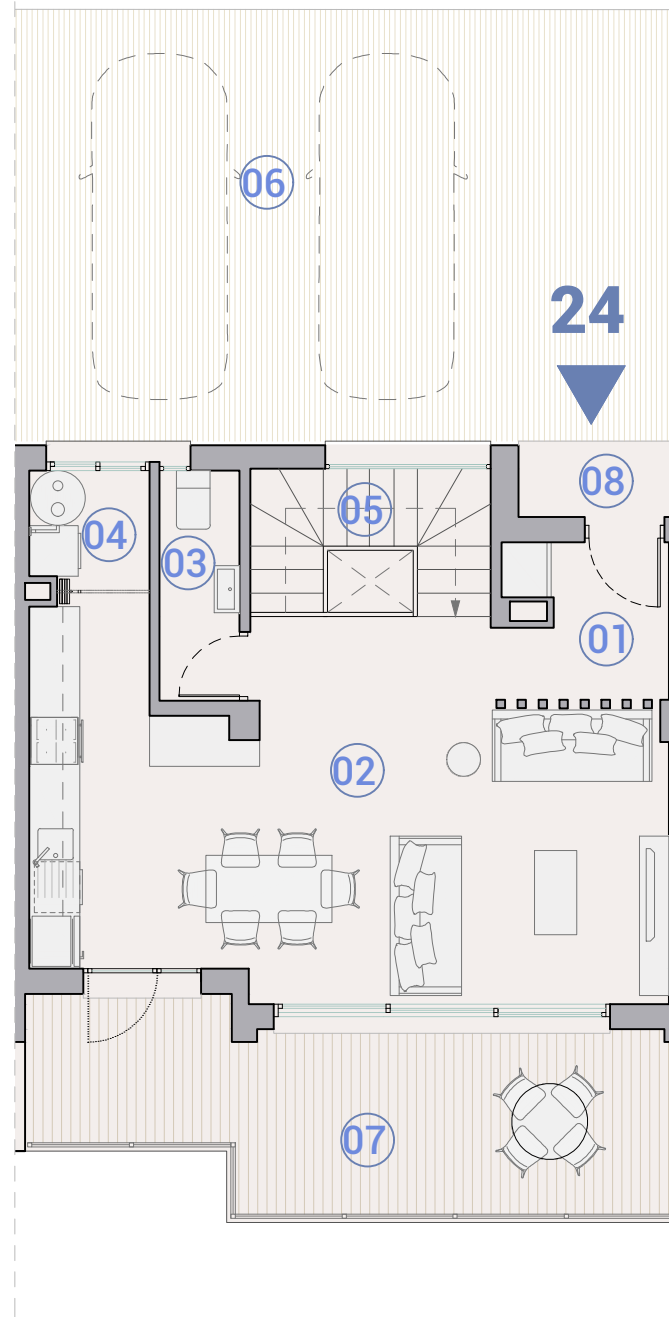
24

Plantas Floors | Superior Intermedia

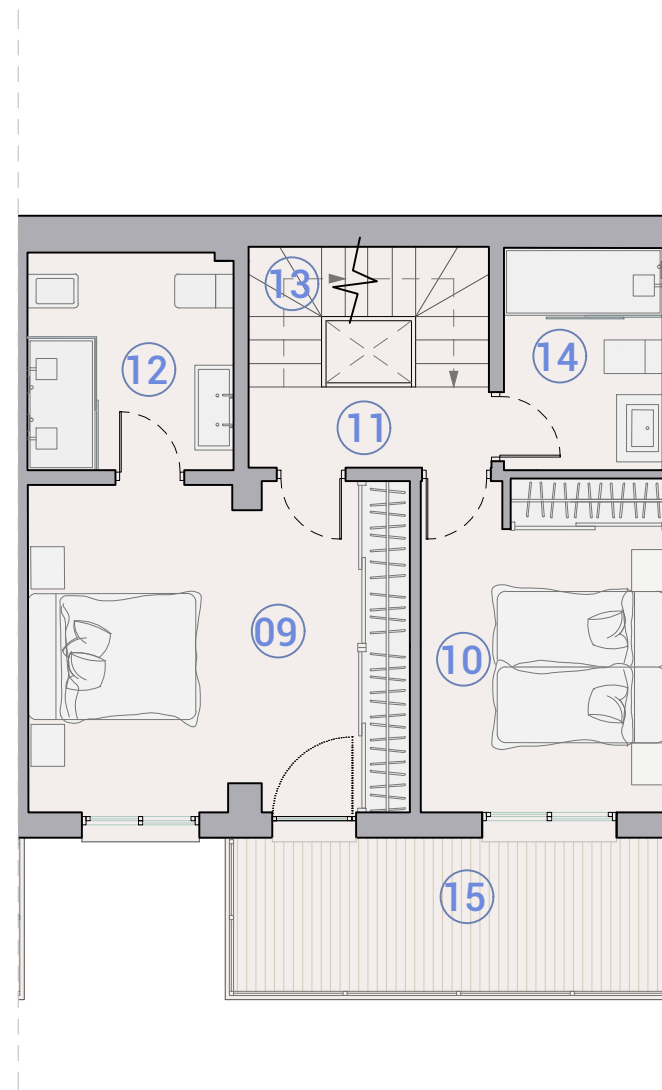
1/2



Sección / Section

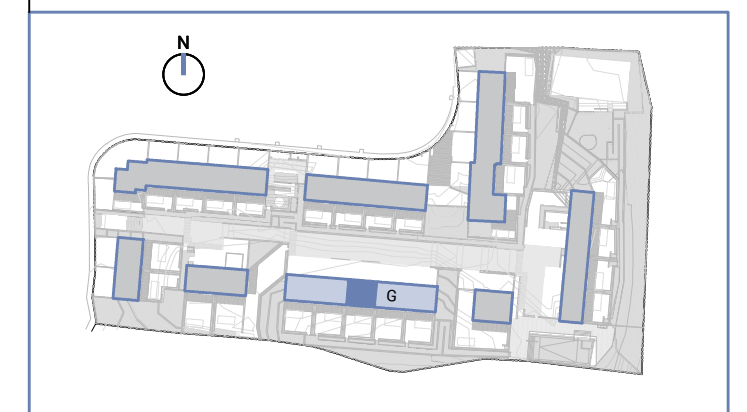


Planta / Floor Superior

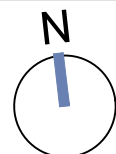


Planta / Floor Intermedia

		sup útil (m2) floor area (m2)	sup const. (m2) built area (m2)
PLANTA / FLOOR SUP.	1. Recibidor / Hall	1,80	
	2. Salón comedor cocina / Living dining kitchen	32,69	
	3. Aseo / Toilet	2,60	
	4. Galería / Gallery	1,80	
	5. Escalera / Stairs	4,23	
Interior / Indoor		43,12	
6. Aparcamiento / Parking			41,29
7. Terraza / Terrace			17,16
8. Acceso / Access			2,10
Exterior / Outdoor			60,55
PLANTA / FLOOR INT.	9. Dormitorio 1 / Bedroom 1	17,54	
	10. Dormitorio 2 / Bedroom 2	11,51	
	11. Distribuidor 1 / Hall 1	2,77	
	12. Baño 1 / Bathroom 1	6,32	
	13. Escalera / Stairs	3,94	
Interior / Indoor		47,08	
15. Terraza / Terrace			10,74
Exterior / Outdoor			10,74
PLANTA / FLOOR INF.	16. Estancia residencial D3 / Residential room D3	14,54	
	17. Baño 3 / Bathroom 3	4,29	
	18. Estancia residencial D4 / Residential room D4	8,18	
	19. Sala TV / TV room	12,87	
	20. Instalaciones / Facilities	2,49	
Interior / Indoor		43,13	
22. Jardín solado / Paved garden			19,90
23. Jardín con césped / Grass garden			49,66
Exterior / Outdoor			69,56
SUP. UTIL INT. VIV / FLOOR INT. AREA APARTMENT		133,33	
SUP. CONST. INT. VIV / BUILT INT. AREA APARTMENT			168,64
TOTAL CON EXTERIORES / TOTAL WITH OUTDOORS			309,49
SUPERFICIE DE PARCELA / PLOT AREA			165,66



Escala gráfica



Fecha Edición: Febrero 2024

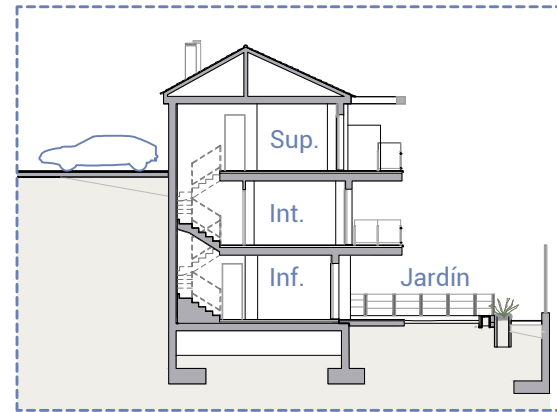
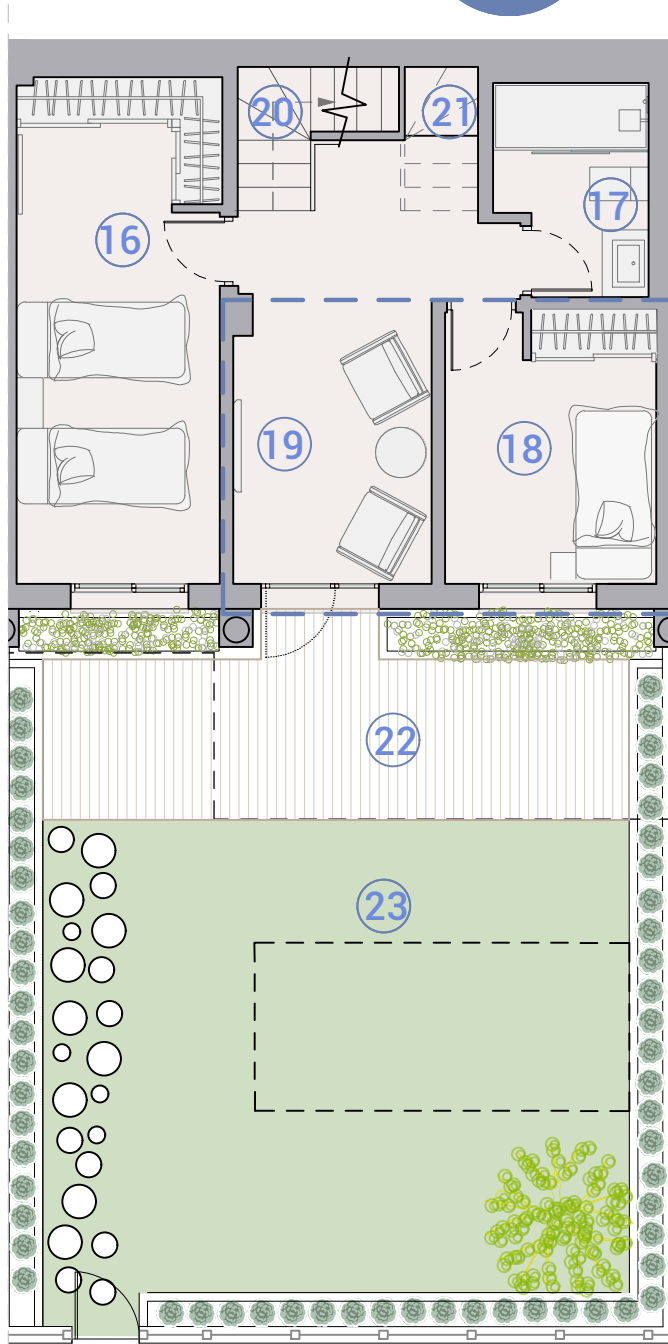
Plano sujeto a posibles modificaciones por razones o exigencias de índole técnica, jurídica o administrativa. Las superficies son aproximadas. Cocina y amueblamiento orientativo, sin valor contractual.
Plans subject to possible modifications for technical, legal or administrative reasons. Measurements shown are approximate. Kitchen and furnishings are for display purposes only, with no contractual value.

VIVIENDA HOUSE

24

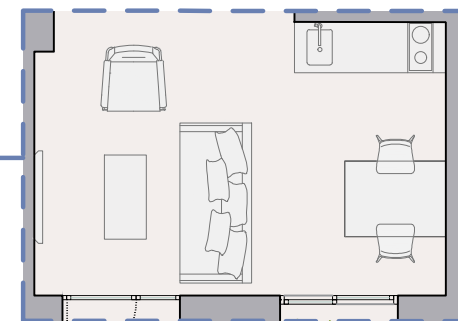
Planta Floor | Inferior

2/2

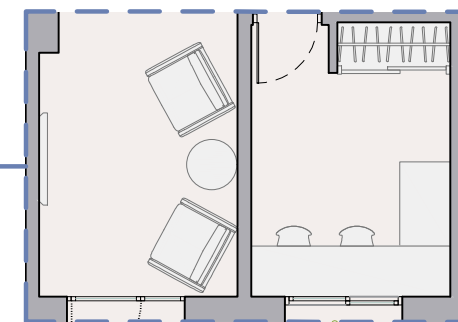


Sección / Section

Opciones distribución
Distribution options

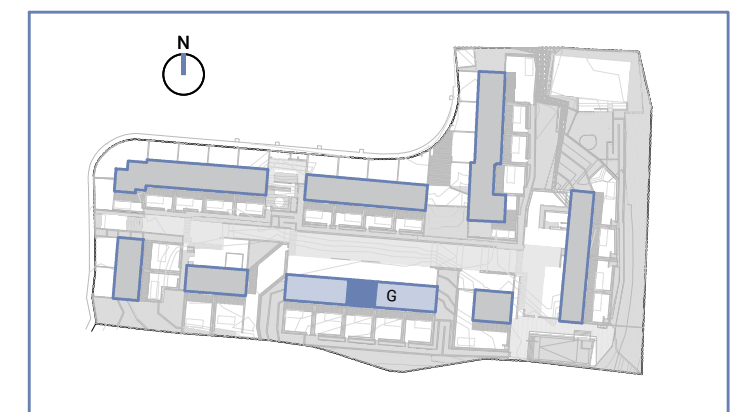


Opción 2: Living + kitchenette
Planta / Floor Inferior



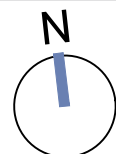
Opción 3: Home office + TV room
Planta / Floor Inferior

		sup útil (m2) floor area (m2)	sup const. (m2) built area (m2)
PLANTA / FLOOR SUP.	1. Recibidor / Hall	1,80	
	2. Salón comedor cocina / Living dining kitchen	32,69	
	3. Aseo / Toilet	2,60	
	4. Galería / Gallery	1,80	
	5. Escalera / Stairs	4,23	
Interior / Indoor		43,12	
PLANTA / FLOOR INT.	6. Aparcamiento / Parking		41,29
	7. Terraza / Terrace		17,16
	8. Acceso / Access		2,10
	Exterior / Outdoor		60,55
PLANTA / FLOOR INF.	9. Dormitorio 1 / Bedroom 1	17,54	
	10. Dormitorio 2 / Bedroom 2	11,51	
	11. Distribuidor 1 / Hall 1	2,77	
	12. Baño 1 / Bathroom 1	6,32	
	13. Escalera / Stairs	3,94	
PLANTA / FLOOR INT.	14. Baño 2 / Bathroom 2	5,00	
	Interior / Indoor	47,08	
PLANTA / FLOOR SUP.	15. Terraza / Terrace		10,74
	Exterior / Outdoor		10,74
PLANTA / FLOOR INT.	16. Estancia residencial D3 / Residential room D3	14,54	
	17. Baño 3 / Bathroom 3	4,29	
	18. Estancia residencial D4 / Residential room D4	8,18	
	19. Sala TV / TV room	12,87	
	20. Instalaciones / Facilities	2,49	
PLANTA / FLOOR SUP.	21. Trastero / Storage room	0,76	
	Interior / Indoor	43,13	
PLANTA / FLOOR INT.	22. Jardín solado / Paved garden		19,90
	23. Jardín con césped / Grass garden		49,66
Exterior / Outdoor			69,56
SUP. UTIL INT. VIV./FLOOR INT. AREA APARTMENT		133,33	
SUP. CONST. INT. VIV./BUILT INT. AREA APARTMENT			168,64
TOTAL CON EXTERIORES / TOTAL WITH OUTDOORS			309,49
SUPERFICIE DE PARCELA / PLOT AREA			165,66



Opción 1: Bedroom + TV room
Planta / Floor Inferior

Escala gráfica



Plano sujeto a posibles modificaciones por razones o exigencias de índole técnica, jurídica o administrativa. Las superficies son aproximadas. Cocina y amueblamiento orientativo, sin valor contractual.
Plans subject to possible modifications for technical, legal or administrative reasons. Measurements shown are approximate. Kitchen and furnishings are for display purposes only, with no contractual value.

Fecha Edición: Febrero 2024