



Doppelhaushälfte

Haus Ost

Hermann-Walker-Straße 24 - 30/3

Nutzflächen:

UG

Flur	10,43 m ²
Gäste	19,62 m ²
Abstell	4,09 m ²
Waschen	2,35 m ²
Keller/Technik	19,62 m ²
Terrasse 50%	3,61 m ²

EG

Diele	13,04 m ²
Wohnen	20,29 m ²
WC	2,41 m ²
Kochen/Essen	20,29 m ²
Balkon 50%	1,79 m ²
Terrasse 50%	3,61 m ²

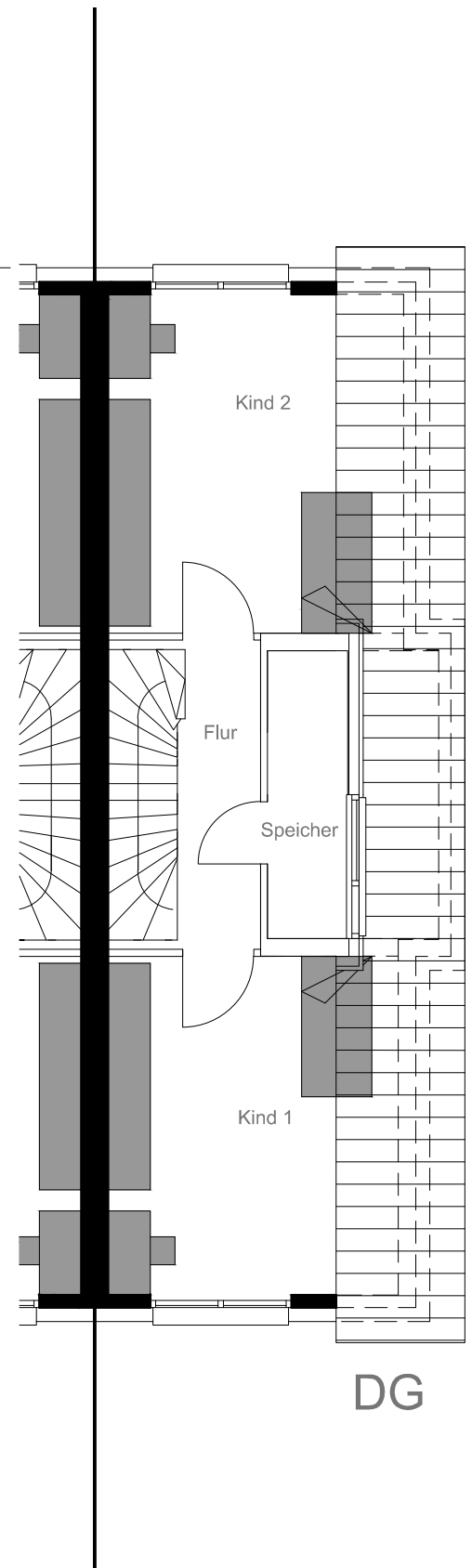
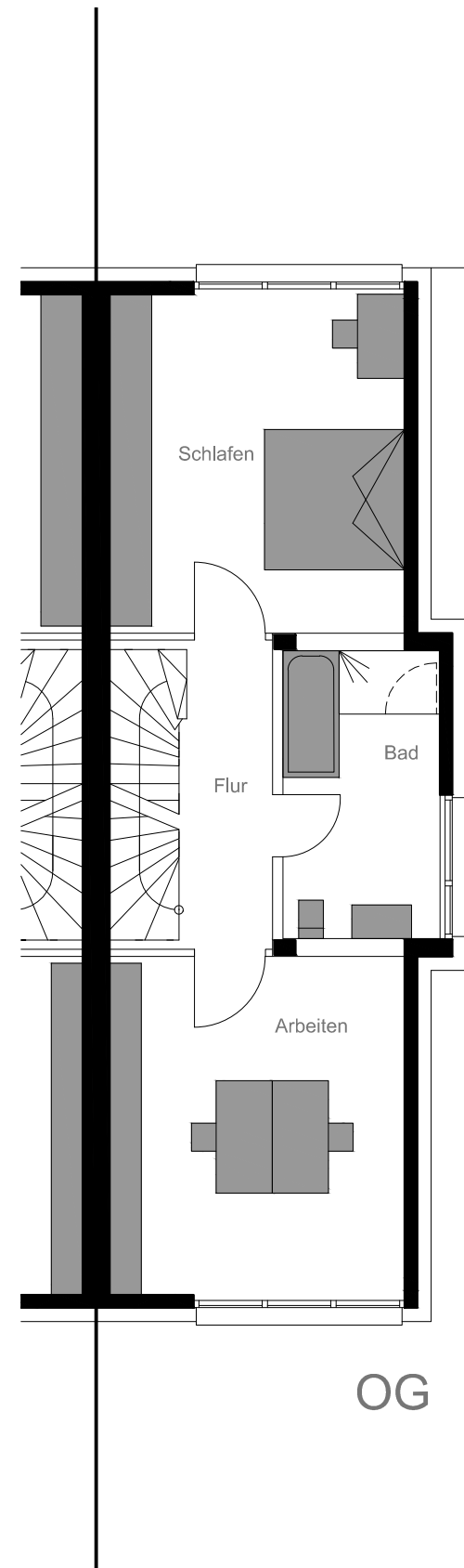
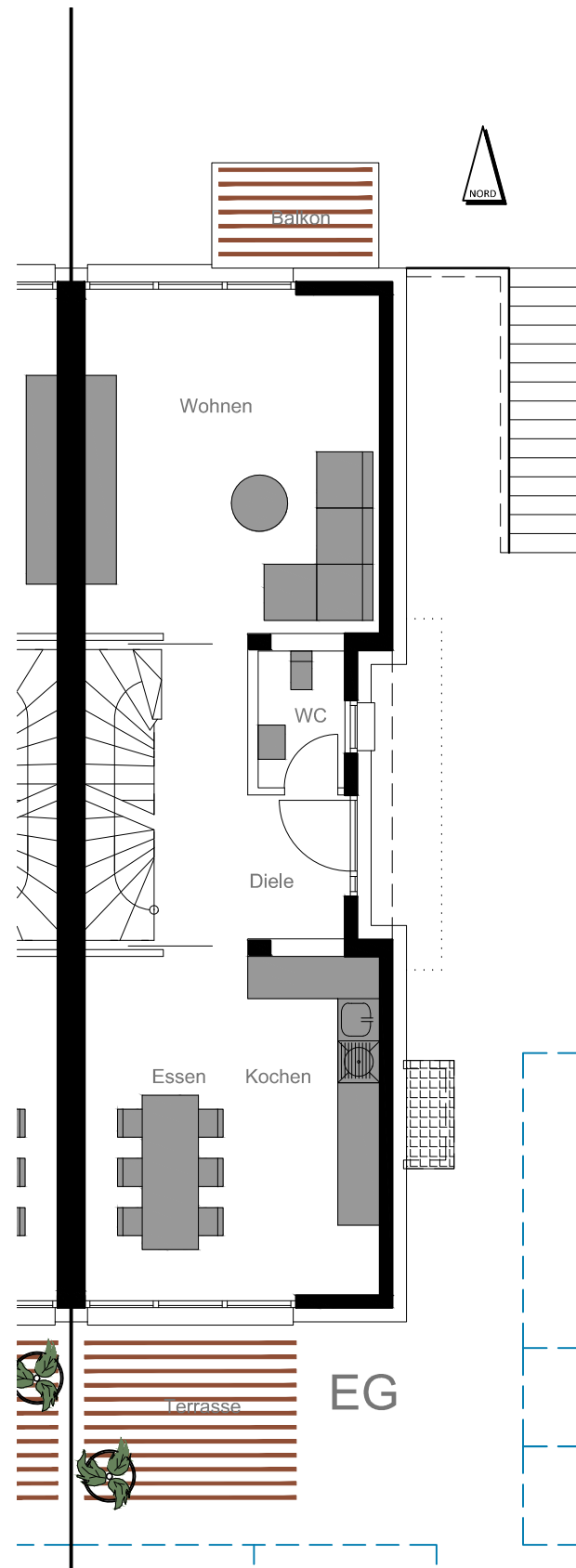
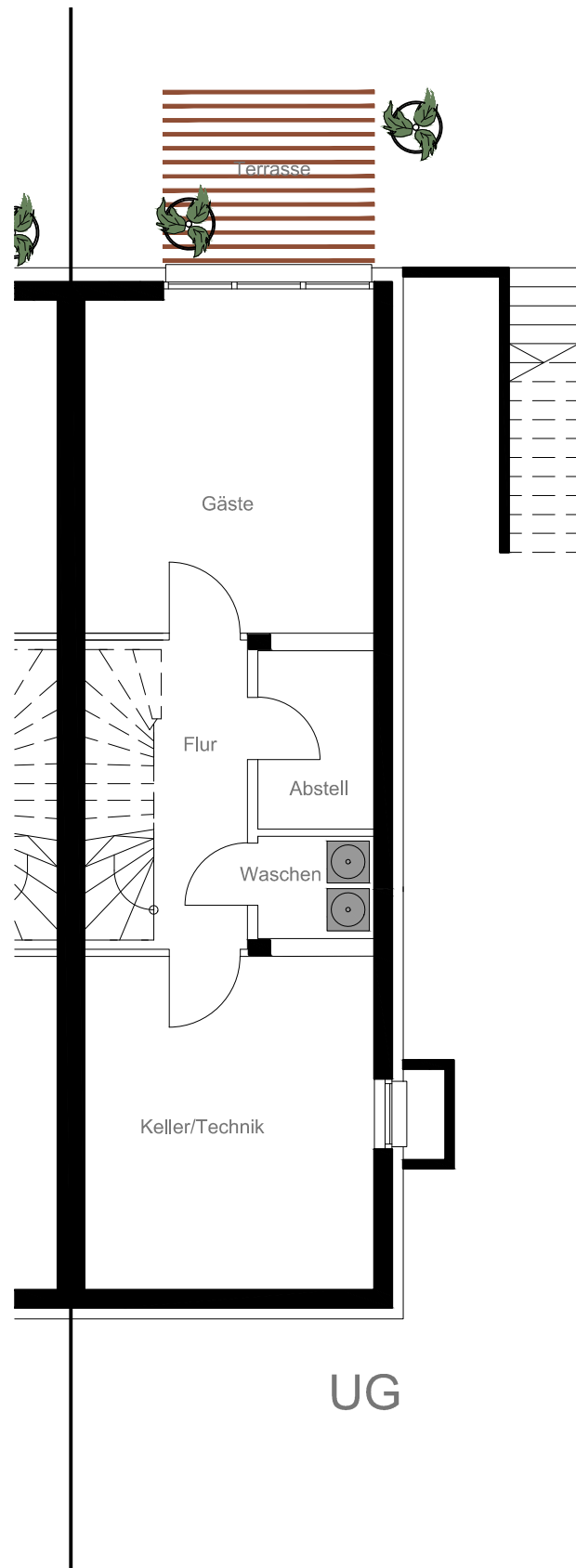
OG

Flur	10,21 m ²
Schlafen	20,29 m ²
Bad	9,16 m ²
Arbeiten	20,29 m ²

DG

Flur	9,55 m ²
Kind 1	13,25 m ²
Speicher	4,67 m ²
Kind 2	13,25 m ²

Gesamt	221,82 m²
---------------	-----------------------------



Maßstab 1:100
UG - DG

