

341

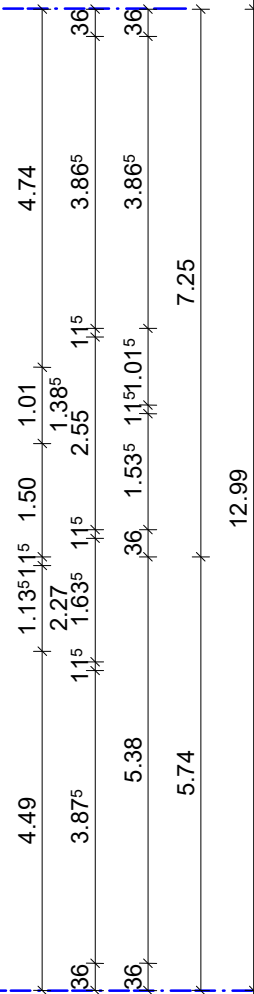
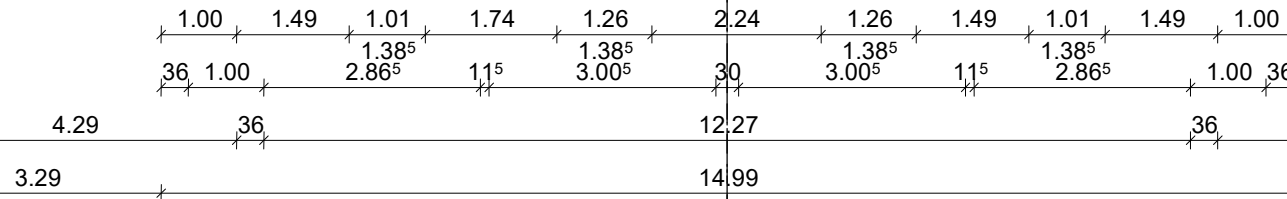
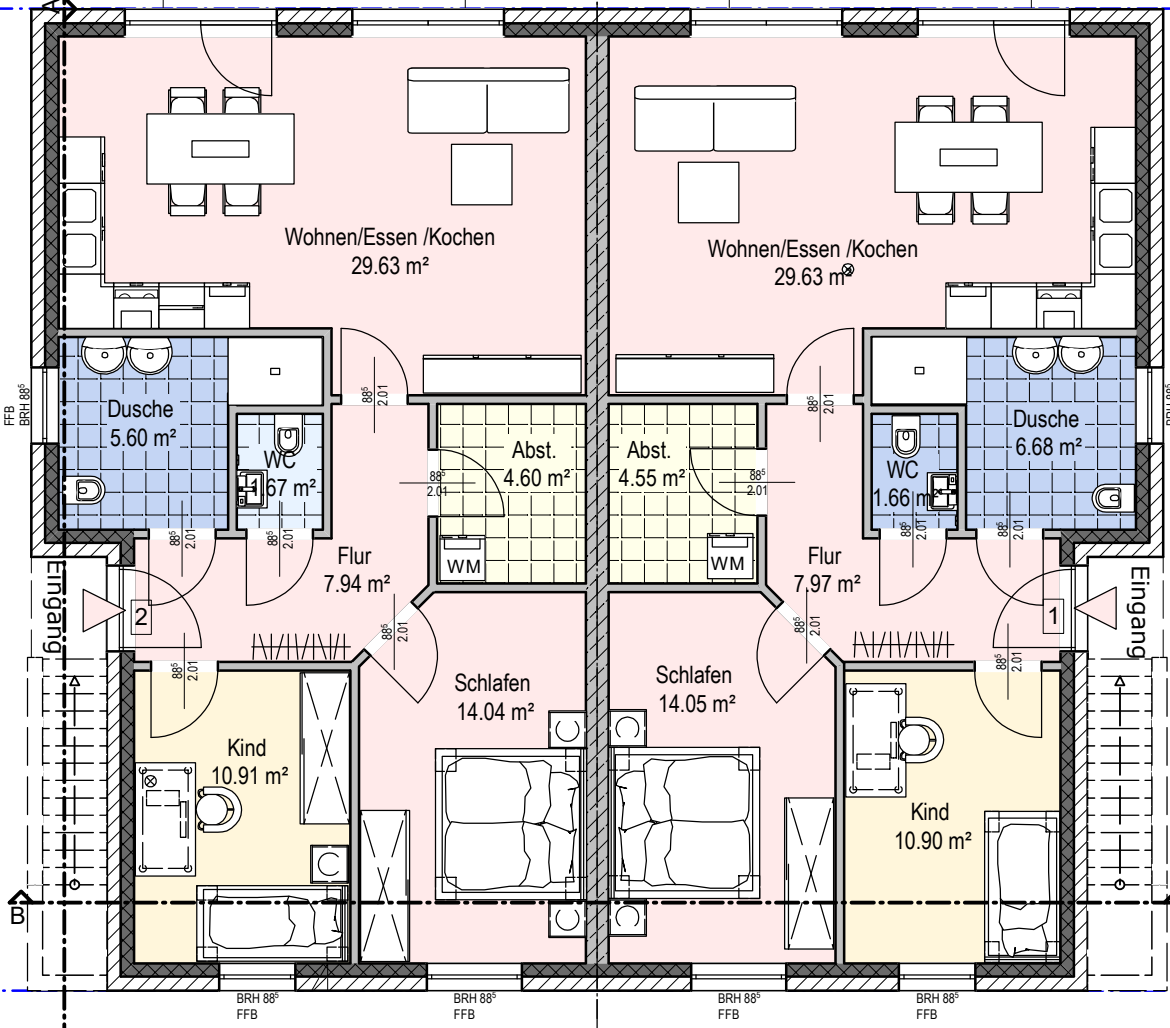
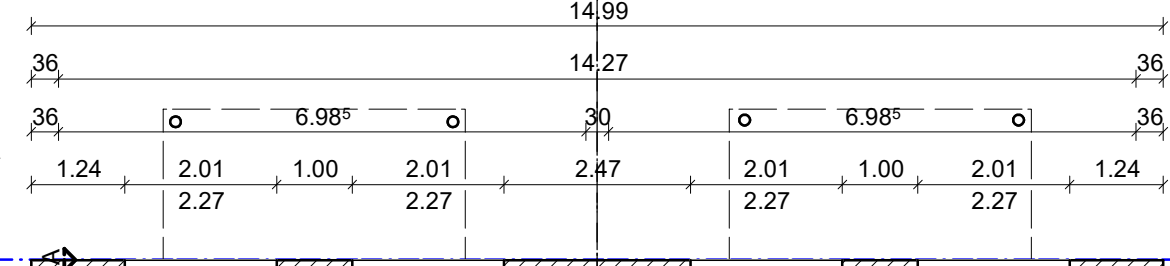
17.16

12.99

5.00

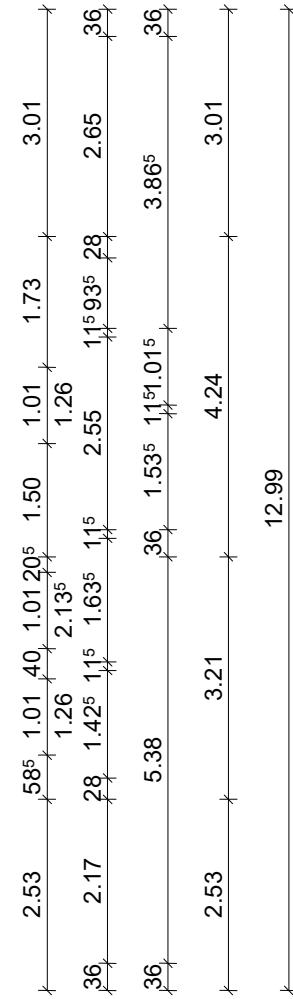
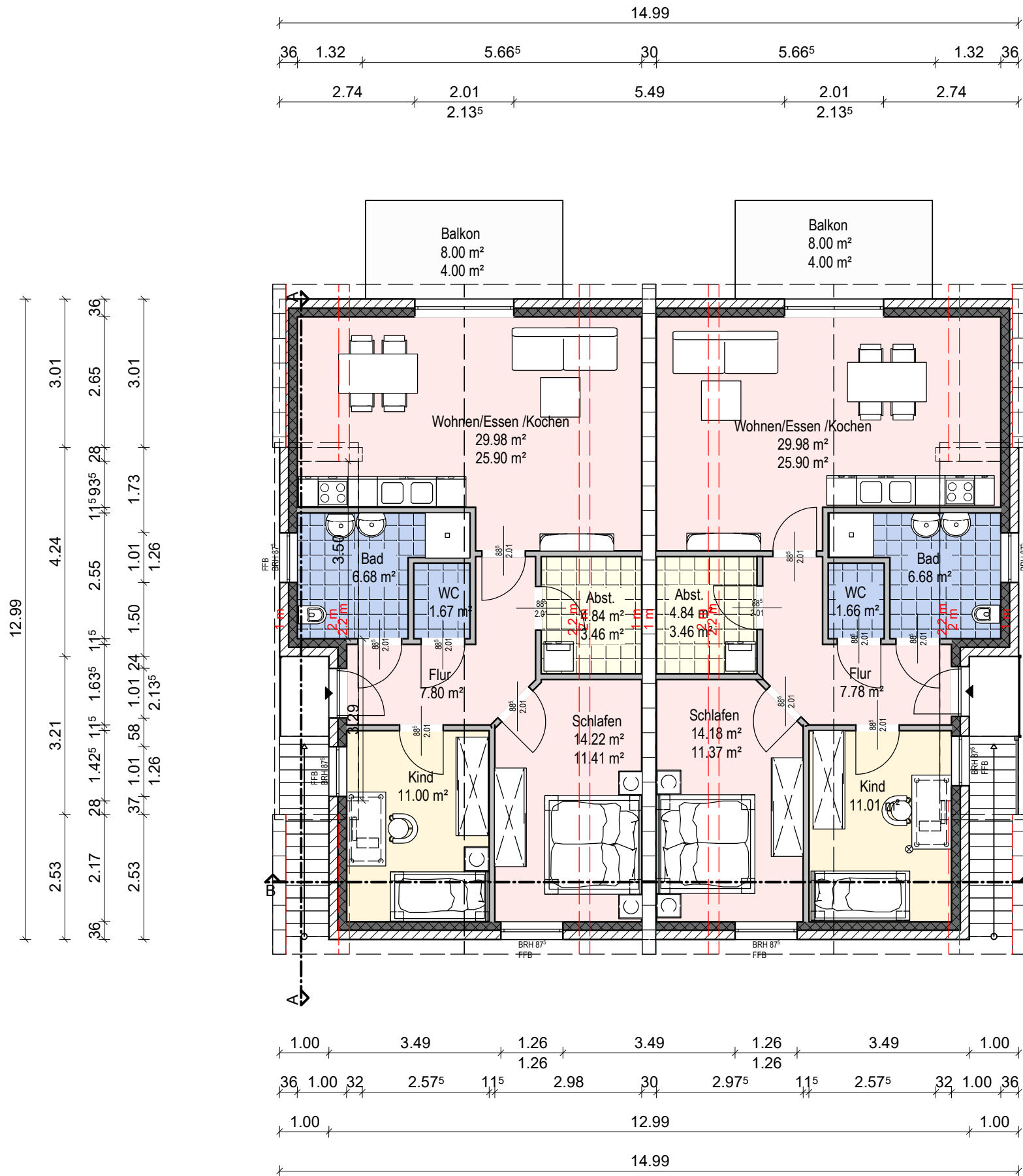


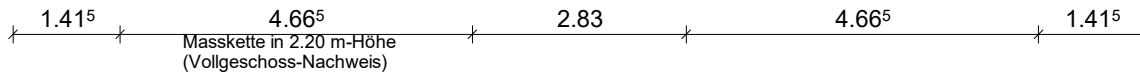
343



344

Rubbenbruchweg





Dachkonstruktion lt. Statik

Dachneigung: 43.0°

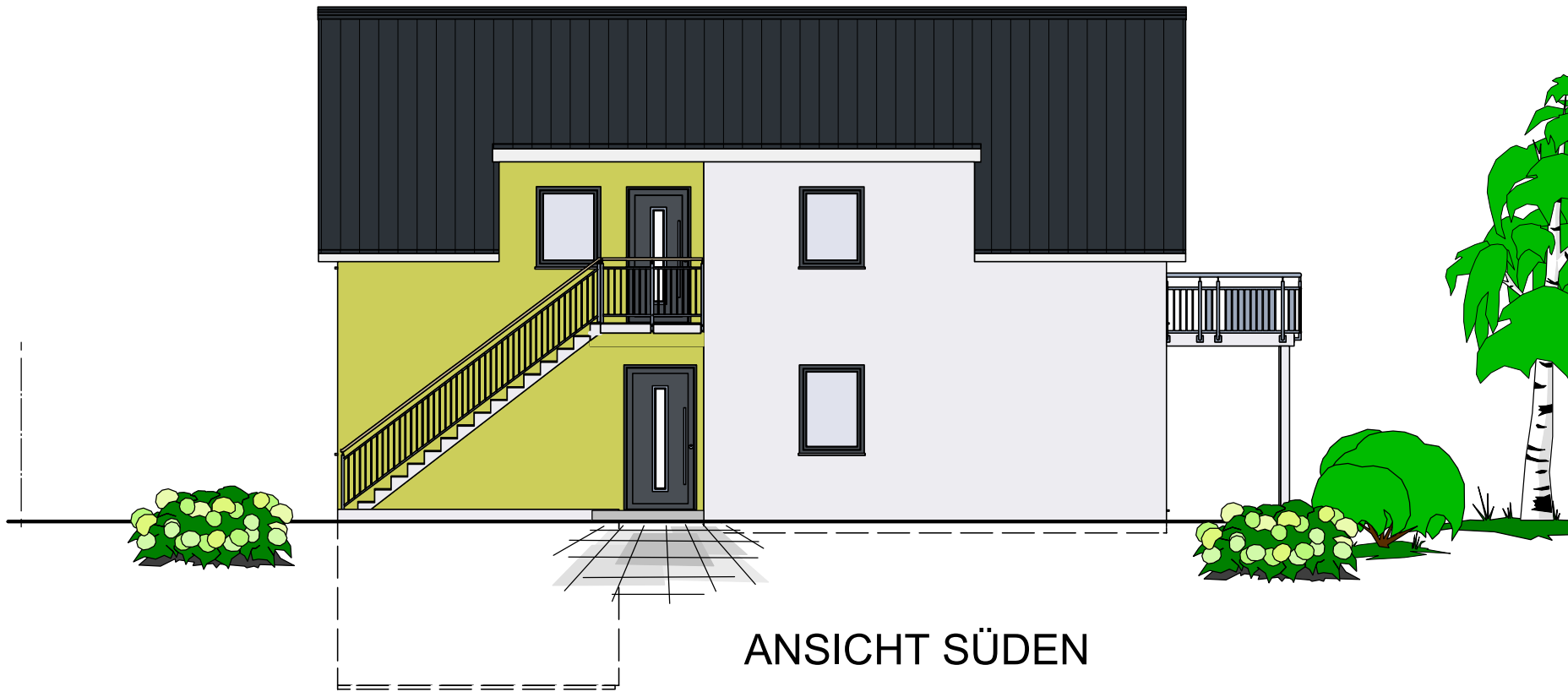


SCHNITT B - B

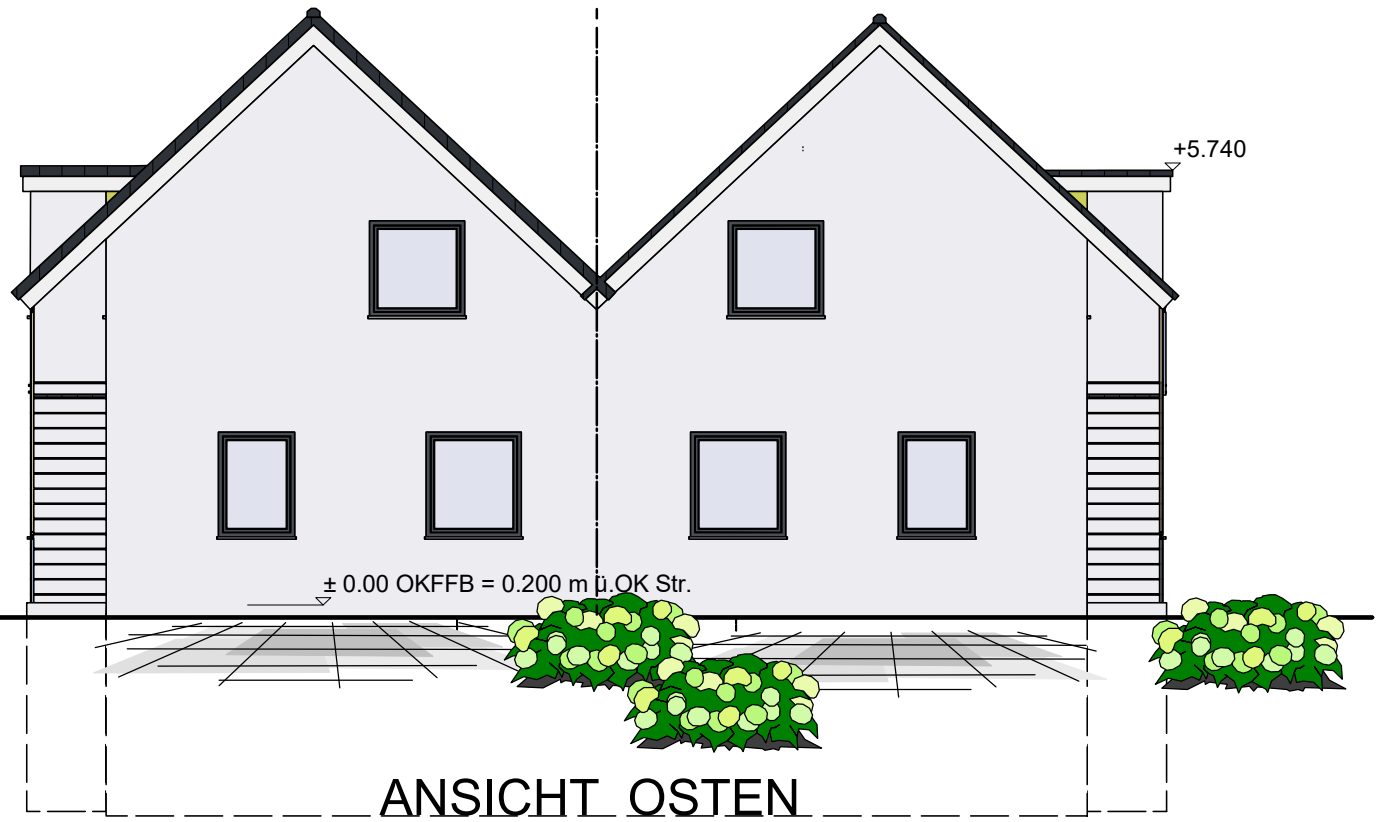
nach Statik.
 führung erfolgt durch die
 e mittels Leerrohr oder
 eueinführung. Die Lage ist
 ein durch den Baubarren



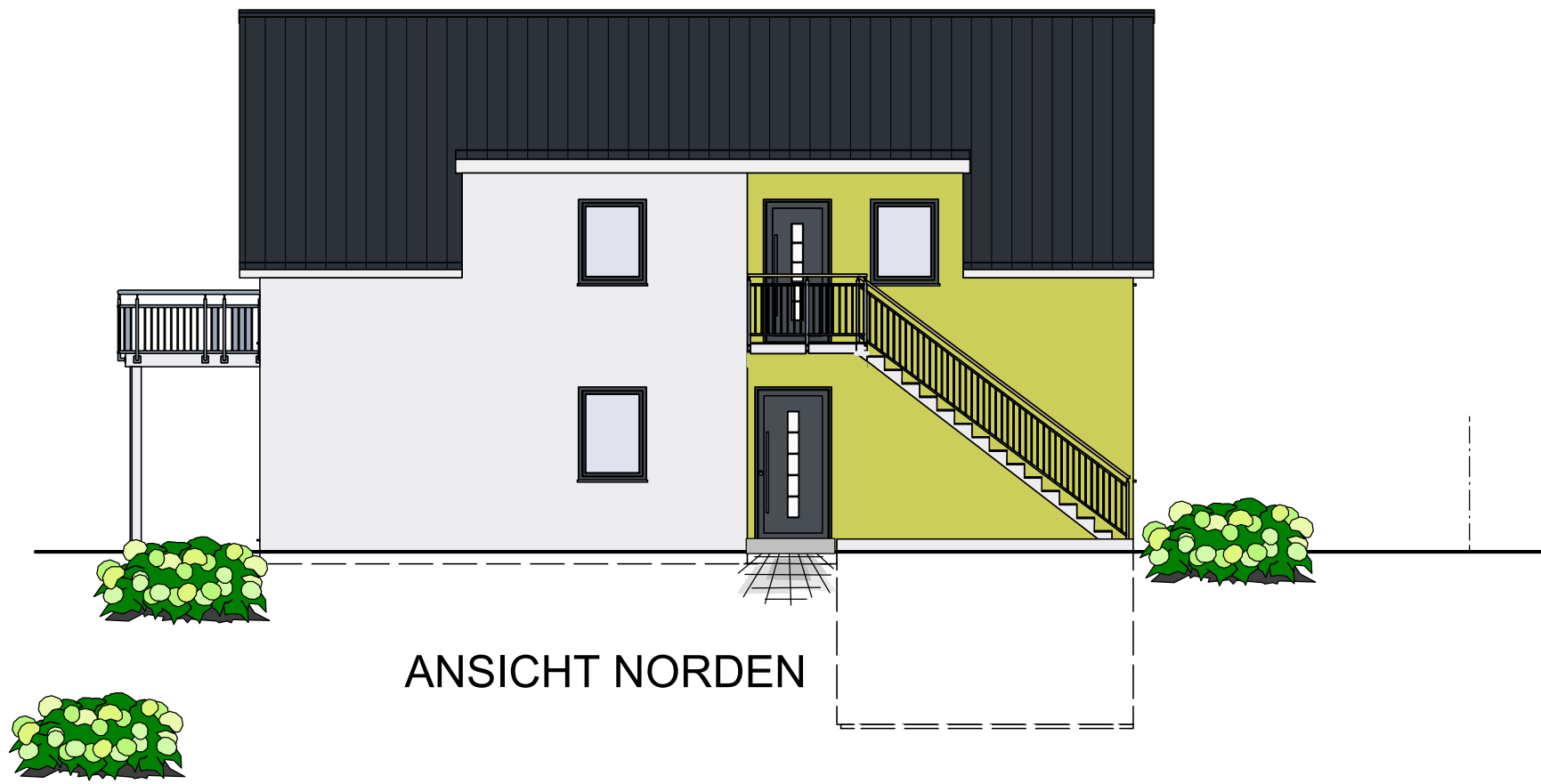
ANSICHT WESTEN



ANSICHT SÜDEN



ANSICHT OSTEN



ANSICHT NORDEN