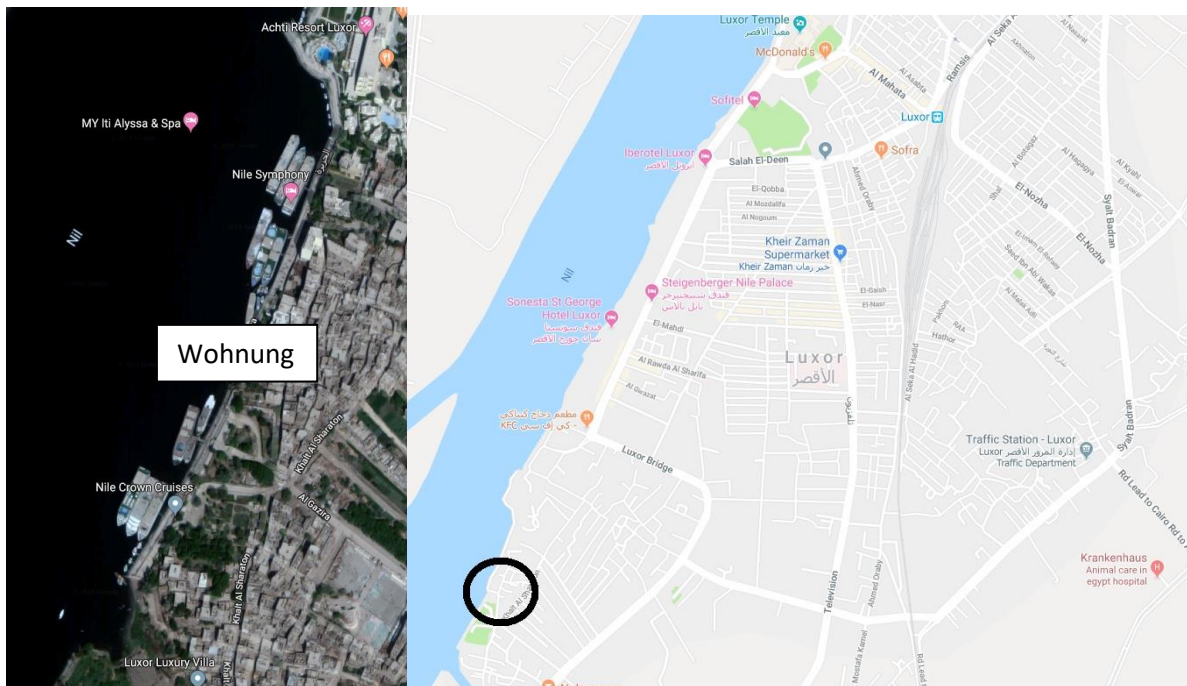


Penthouse-Suite Luxor

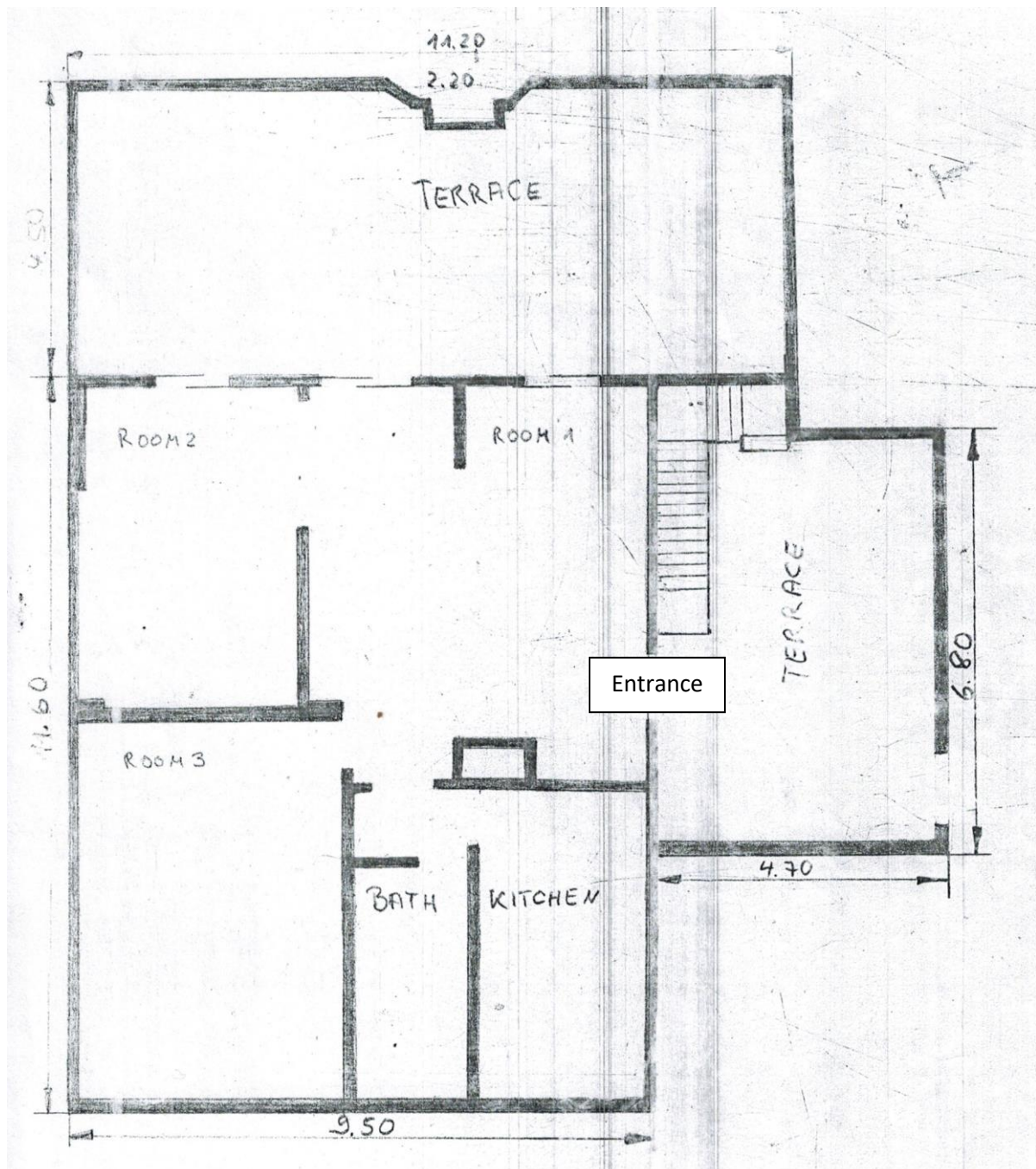


Close to the Culture Palace in Gazirat Al Awameyah, this penthouse suite overlooks the Nile unobstructed from the east bank. To the north just 6 kilometers away is Karnak-Temple. Easily accessible via the road "Luxor Bridge", which runs parallel to the Nile, Al Gazira Road leads you up to the multi-family house. Both, Egyptians and Europeans live here. Immediately, the street noise falls away from the bustling center and temples 3 kilometers away and you can enjoy the tranquility and familiarity of this old district of Luxor. As soon as you enter the rear building through the front gate and climb the steps to the third floor, the picturesque view of the Nile from 2 terraces opens up. The subliminal hum and the hustle and bustle of the River Nile Ships pull you in. If you want to reach the highest level, you can easily get to the fenced-in roof of the house via the attached external staircase and overlook the entire city!



Description of the Apartment

- 3 rooms, 1 bathroom, 1 kitchen, 2 terraces. Floor area approx. 175 m², of which approx. 110 m² living space
- access the apartment via the 1st terrace with approx. 6x4 m floor space (Entrance)
- front door opens into the large living room (Room 1)
- turn left for the bathroom and kitchen
- at the far left is the bedroom (Room 3)
- just behind the living room is the 2nd room (Room 2)
- turn right and go through the sliding door to reach the second terrace. It extends over the entire front of the apartment with about 11x4,50 m and Nile view



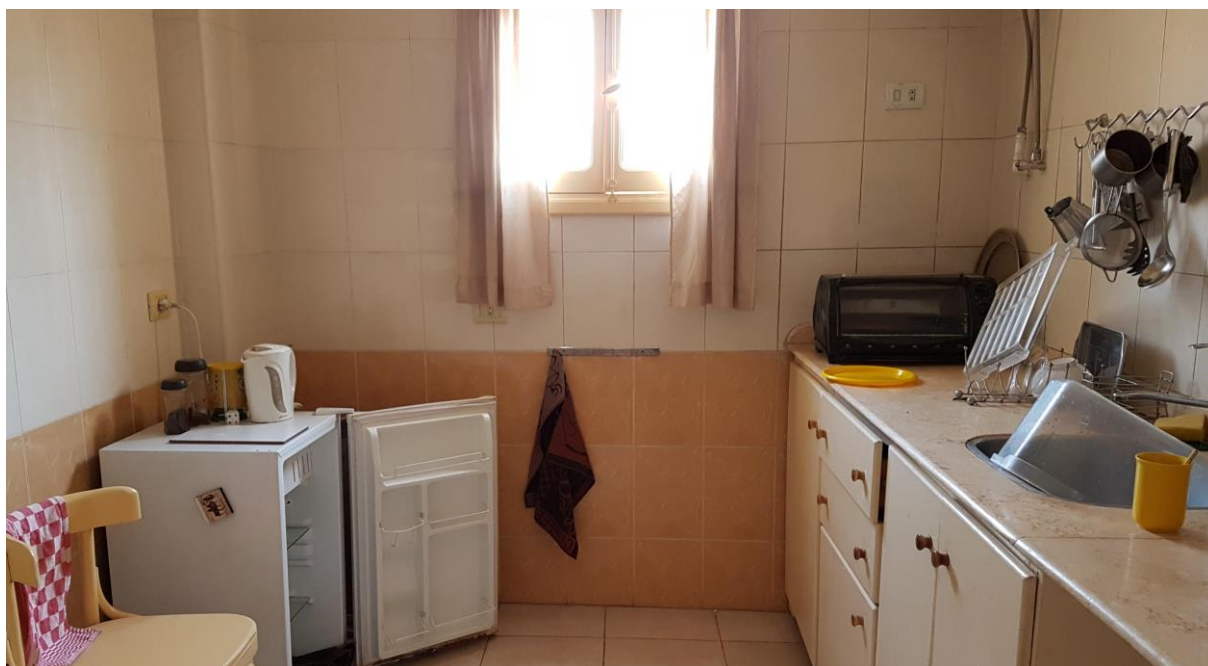
1. Terrace with entrance door to the house and stairs to the roof



Living room (Room 1)



Kitchen, equipped with the most important



Large, 2nd terrace









E=mc²
 TESLA
 equator=2πr
 HAARP
 the Big Bang
 IONOSPHERE
 ozonehole
 JETSTREAM
 SUPERNOVA
 the Big Bang
 IONOSPHERE
 Point Barrow
 السلام عليكم!
 السلام
 -156 °C
 < 7000 m
 70km



Bedroom (Room 3)

