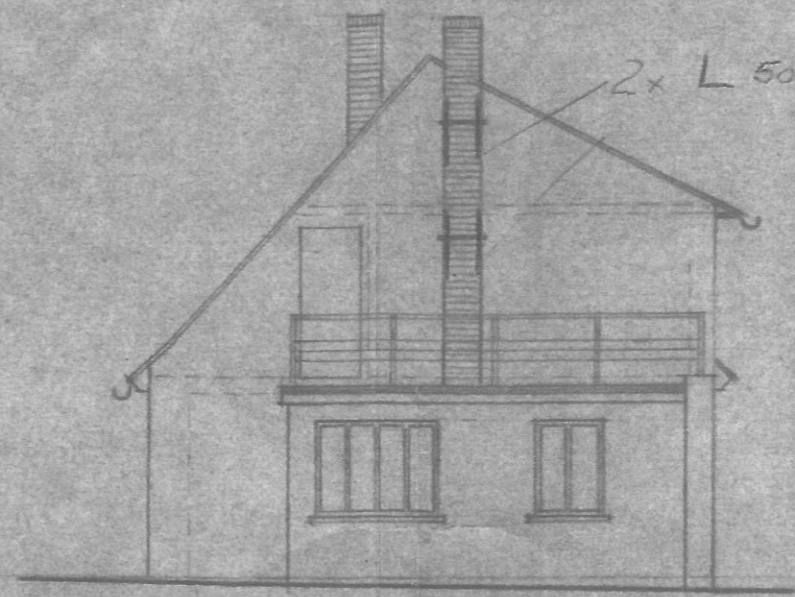


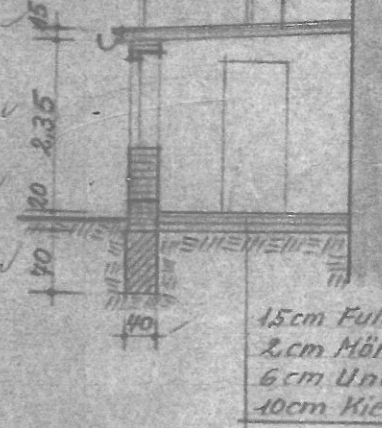
Ost-Ansicht



Süd-Ansicht

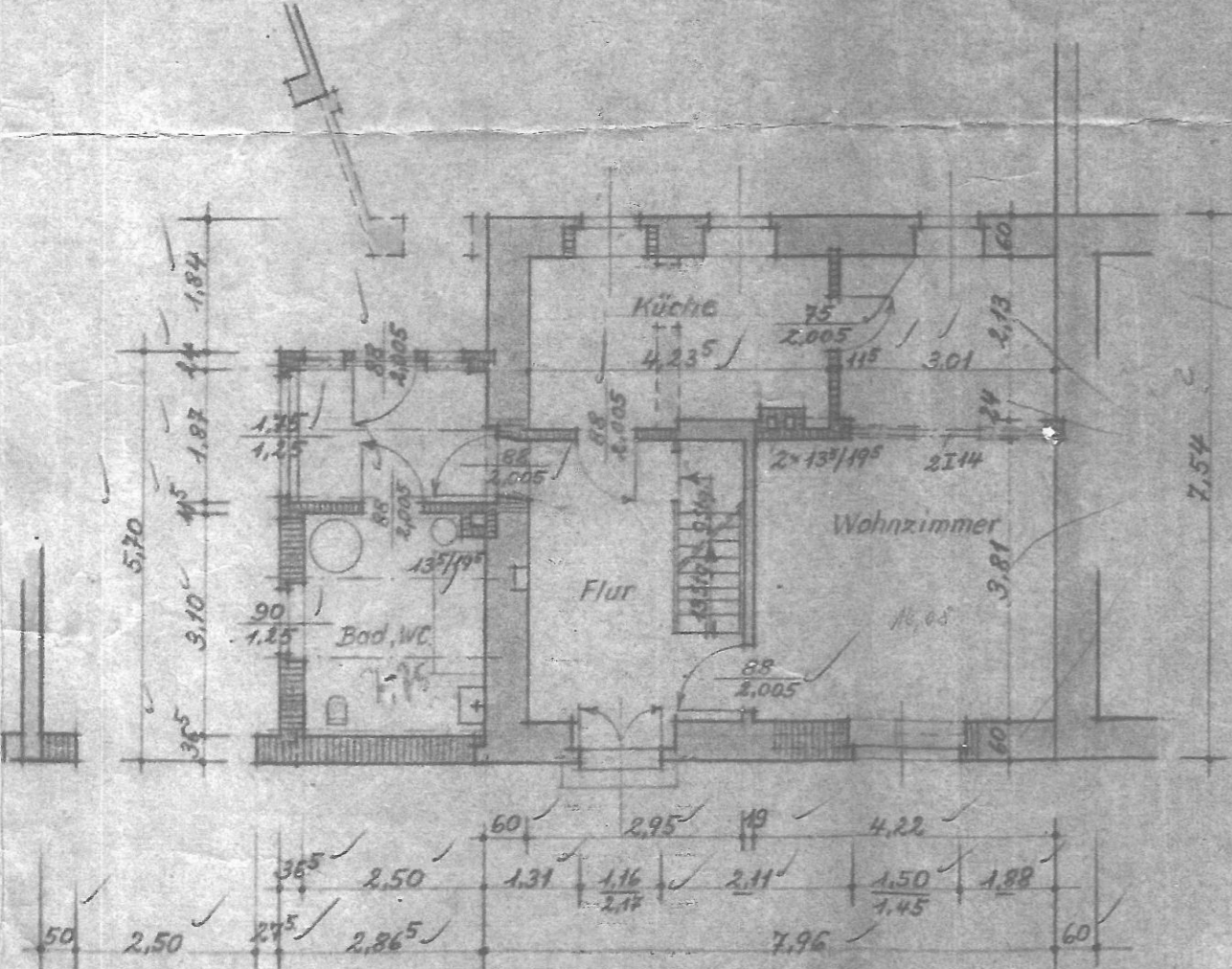
2x L 50/50/150dänge

2 Lg. Pappe  
 3,5cm Zementestrich  
 3,5cm zementgeb. Leichtbaupl.  
 2,2cm Ausgleichs beton  
 7,1cm LLZ 14/150 Ia H6 III  
 93mm Schienen in 10cm Abst.

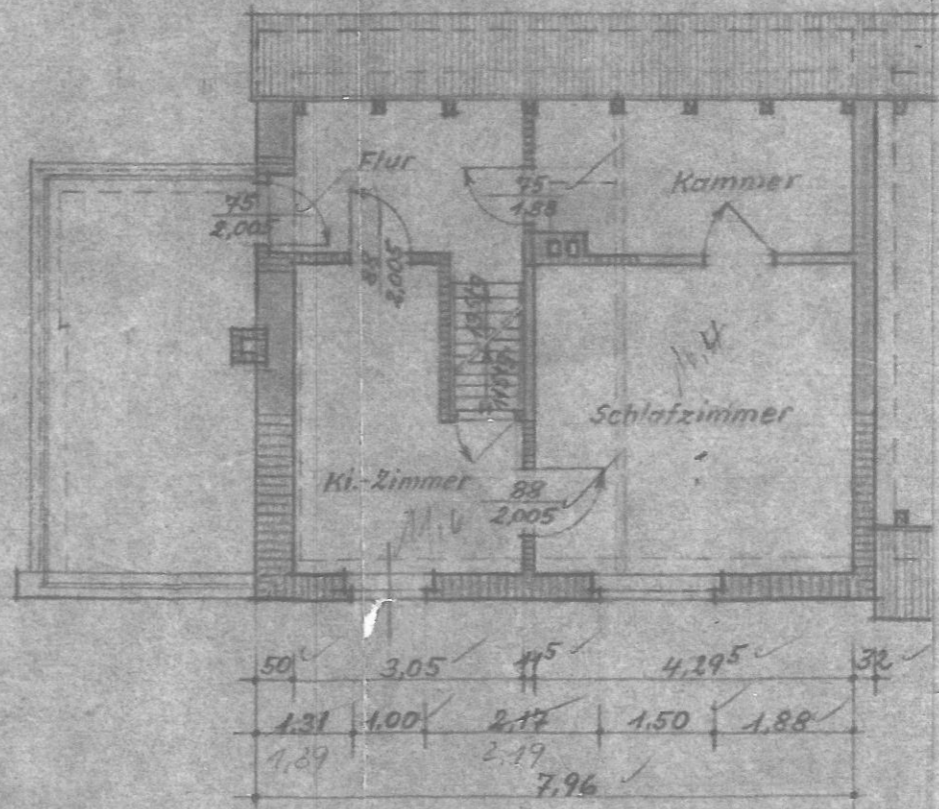


15cm Fußboden  
 2cm Mörtel  
 6cm Unterdachstuhl  
 10cm Kies

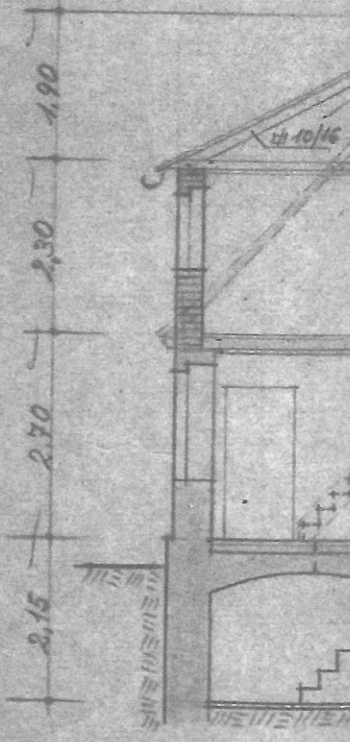
Querschnitt durch



Erdgeschoß-Grundriß



Obergeschoß-Grundriß



Querschnitt