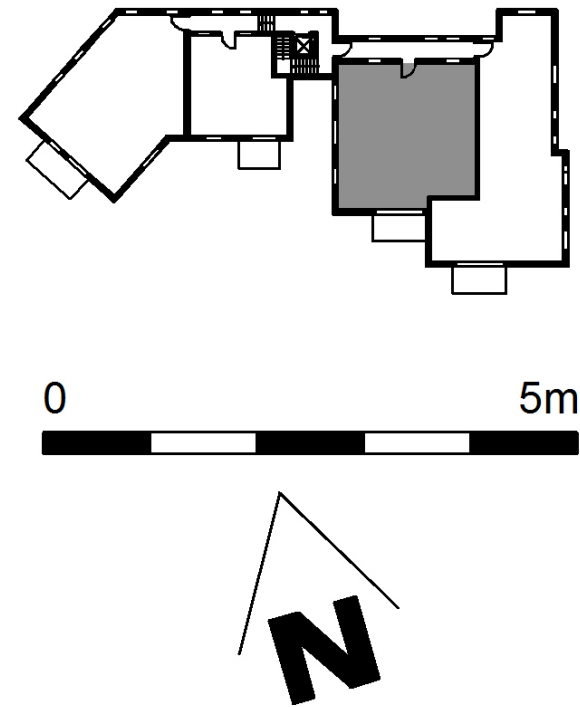
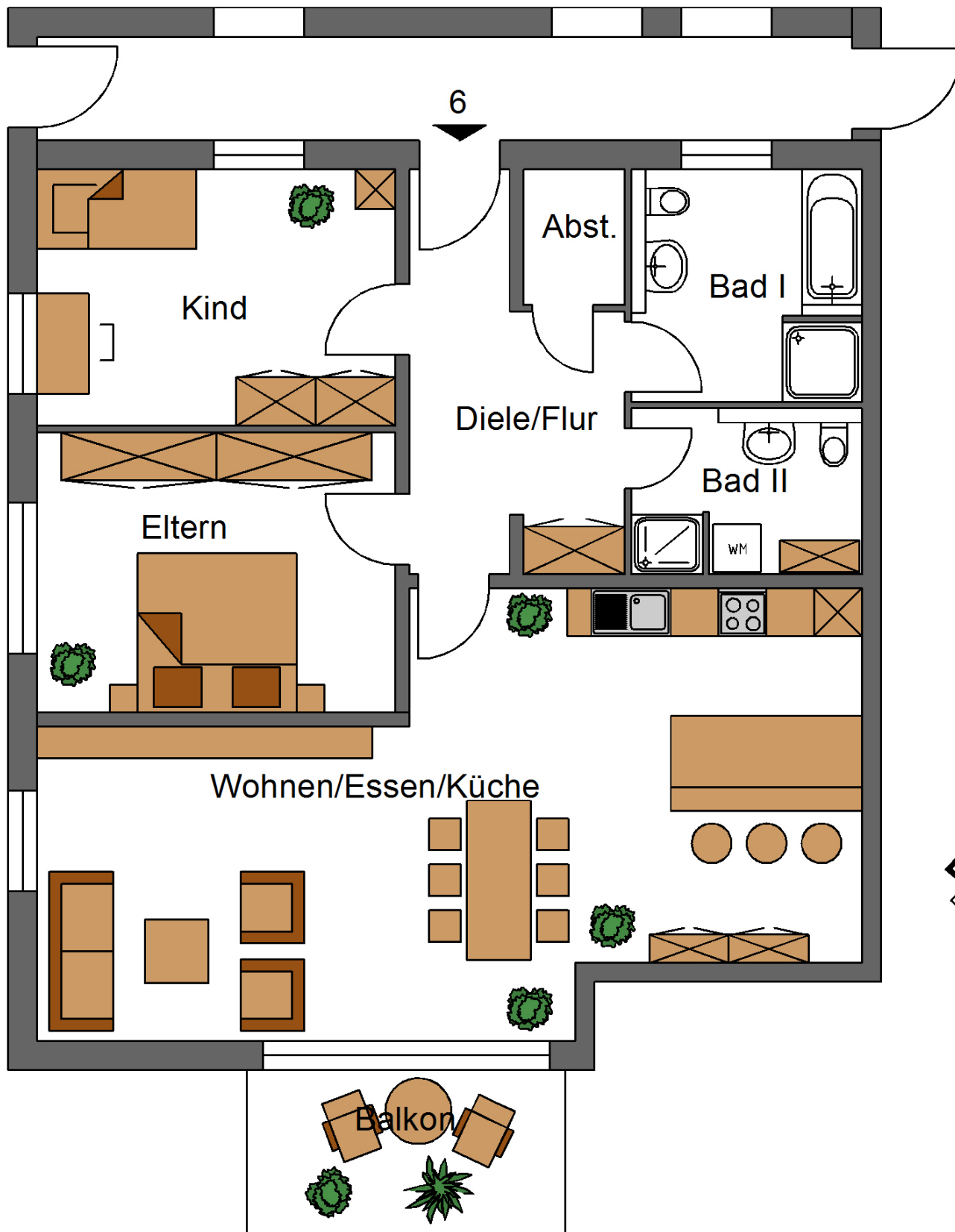


# Konz, Tränkweg 3

163006g

Wohnung Nr. 6, Obergeschoss mitte links



## Wohnung 6, 3-Zimmer-Wohnung, OG mitte links

Wohnen / Essen / Küche	$6,76 \times 0,98 + 10,36 \times 2,97 + 1,74 \times 5,69$	= 47,24 m <sup>2</sup>
Eltern	$3,52 \times 4,50$	= 15,84 m <sup>2</sup>
Bad I	$2,90 \times 1,84 + 1,90 \times 1,08 + 1,00 \times 1,00$	= 8,39 m <sup>2</sup>
Abstellen	$1,71 \times 1,27$	= 2,19 m <sup>2</sup>
Diele / Flur	$1,27 \times 0,75 + 2,55 \times 1,45 + 5,09 \times 1,26$	= 11,05 m <sup>2</sup>
Bad II	$1,92 \times 2,09 + 0,98 \times 1,30 + 0,78 \times 0,90$	= 5,98 m <sup>2</sup>
Kind	$4,50 \times 3,22$	= 14,49 m <sup>2</sup>
Balkon	$4,00 \times 2,00 \times 0,5$	= 4,00 m <sup>2</sup>

**Wohnfläche ca. = 109,18 m<sup>2</sup>**