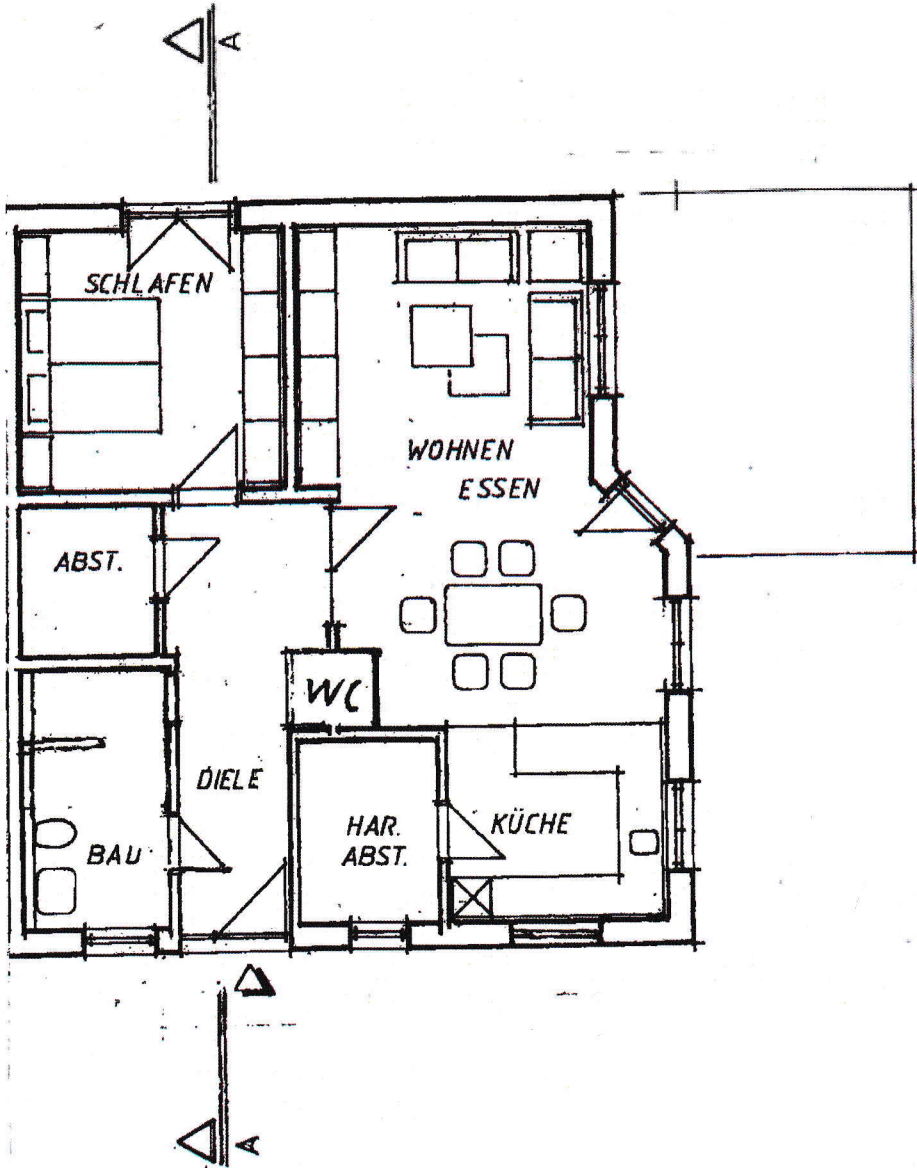
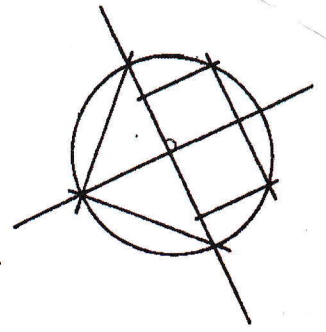


					1.00
24	3.51	175	4.01	39	1.00
24	1.885	115	2.135	175	4.385
	1.51				
	2.235				

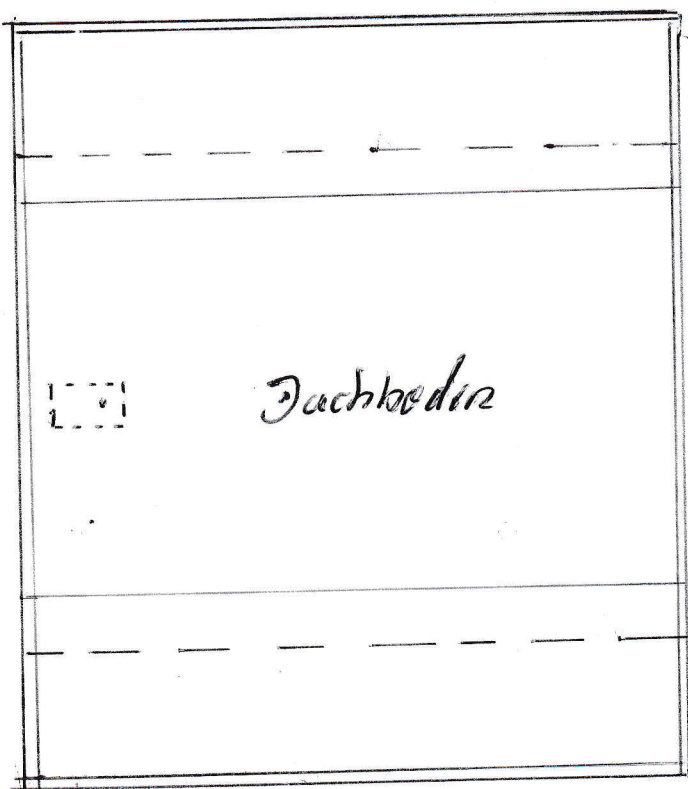


	1.26	1.26	1.00	1.51	1.385	175	175	39
	1.135	2.235	1.01	1.775	2.01	3.14	3.51	39
39	2.515	115	175	3.685	3.685	10.29		

	1.01	1.51	76		
	1.01	2.11	1.01		
24	2.01	115	1.51	62	175
					4.385
24	2.01	115	1.51	175	2.01
					115
					2.885

5.45

E 6
rechts



Dachboden

ca 10,25

ca 5,30

DG
rechts