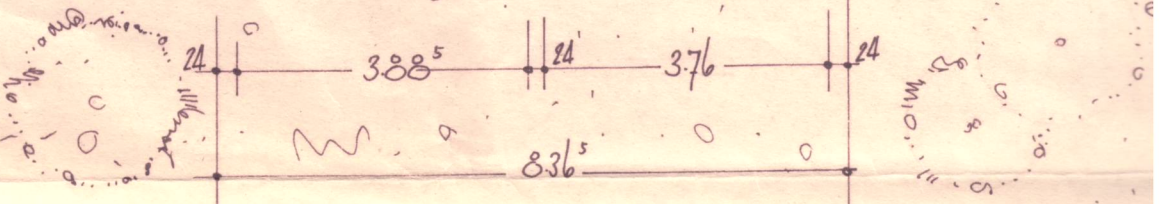
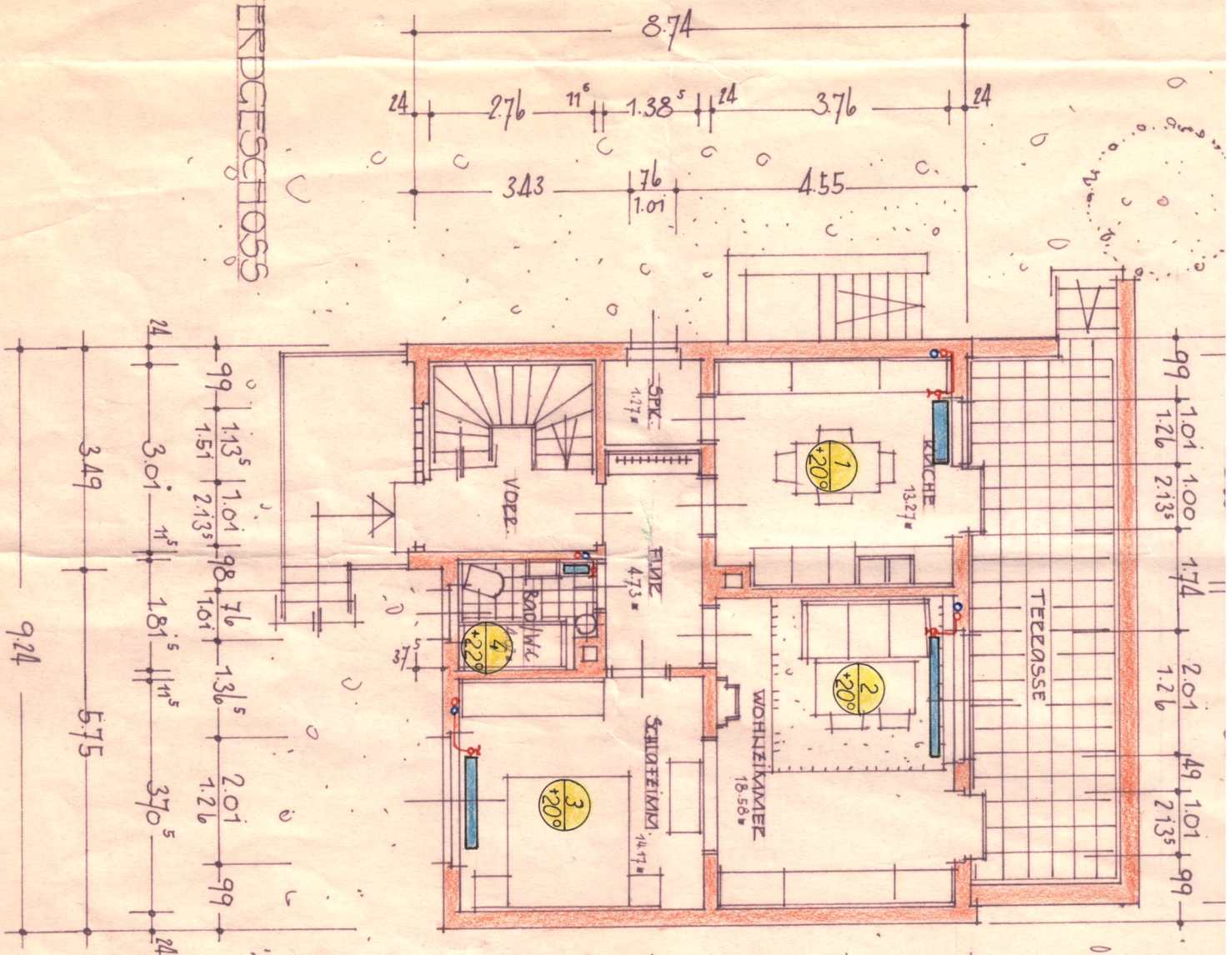
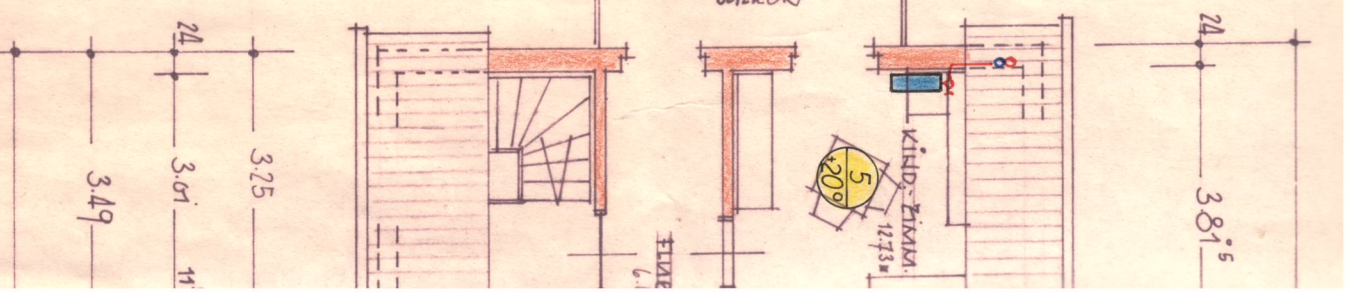


ERDGESCHOSS

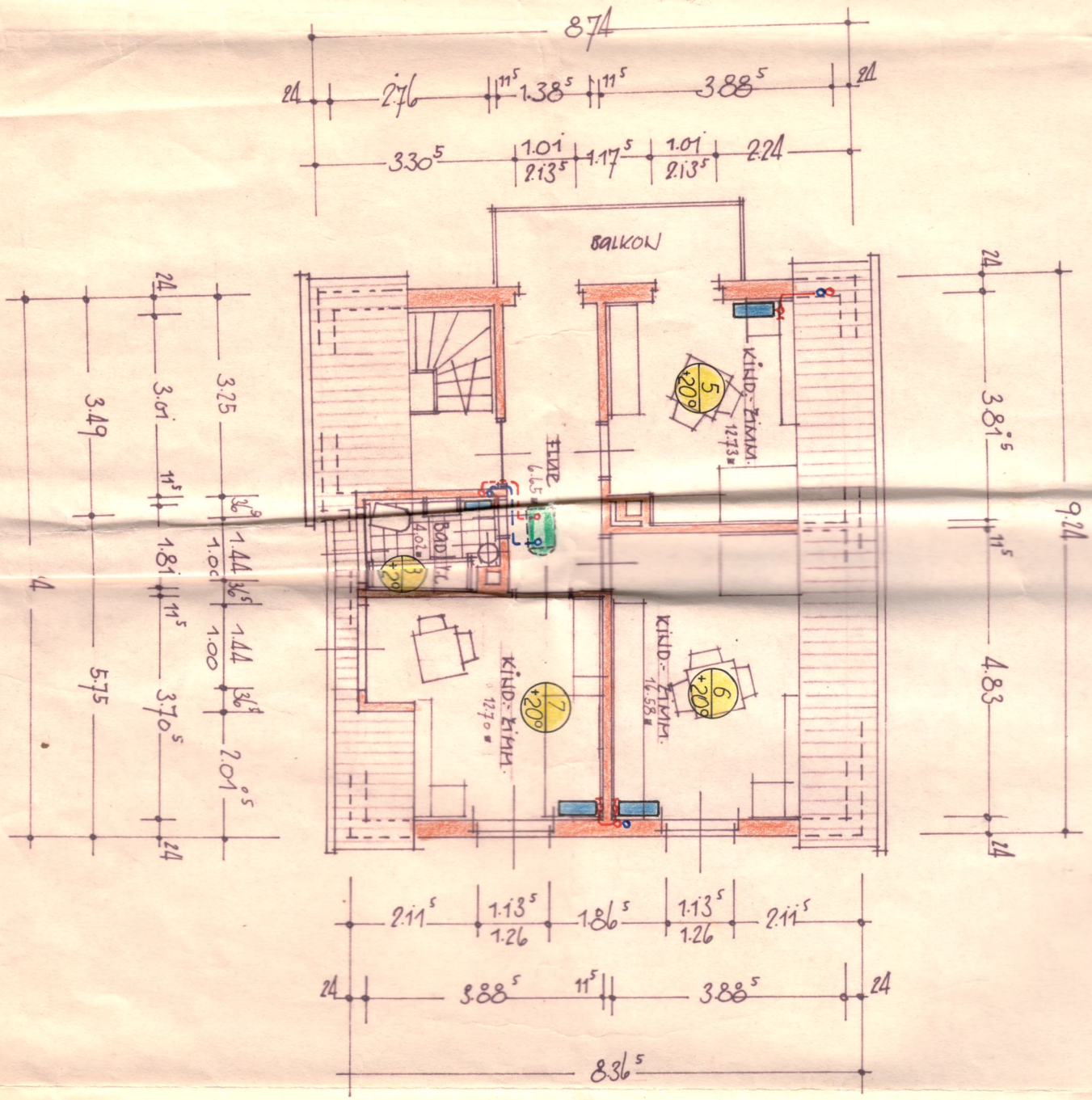


DACHGES

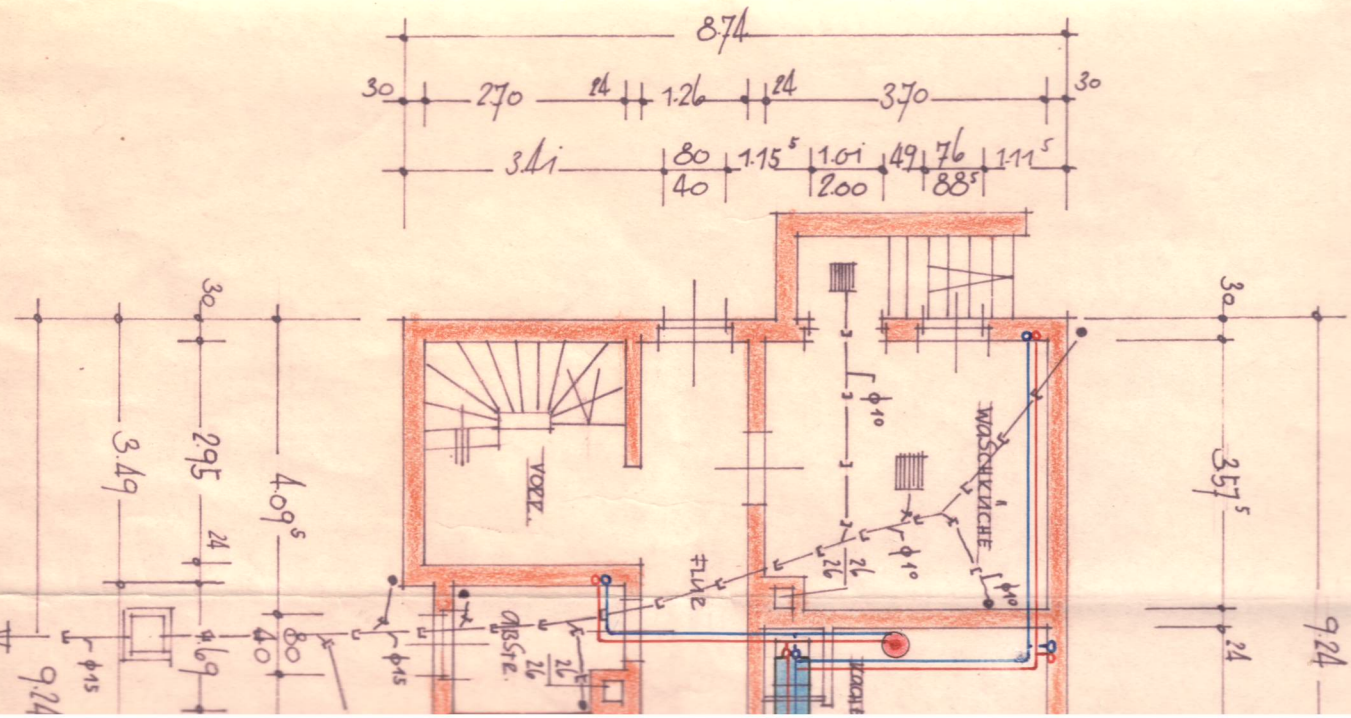




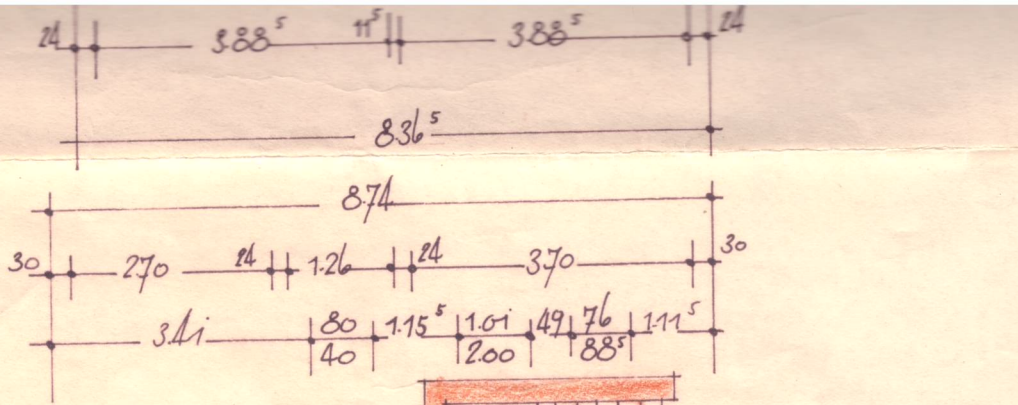
DACHGESCHOSS



KELLERGESCHOSS

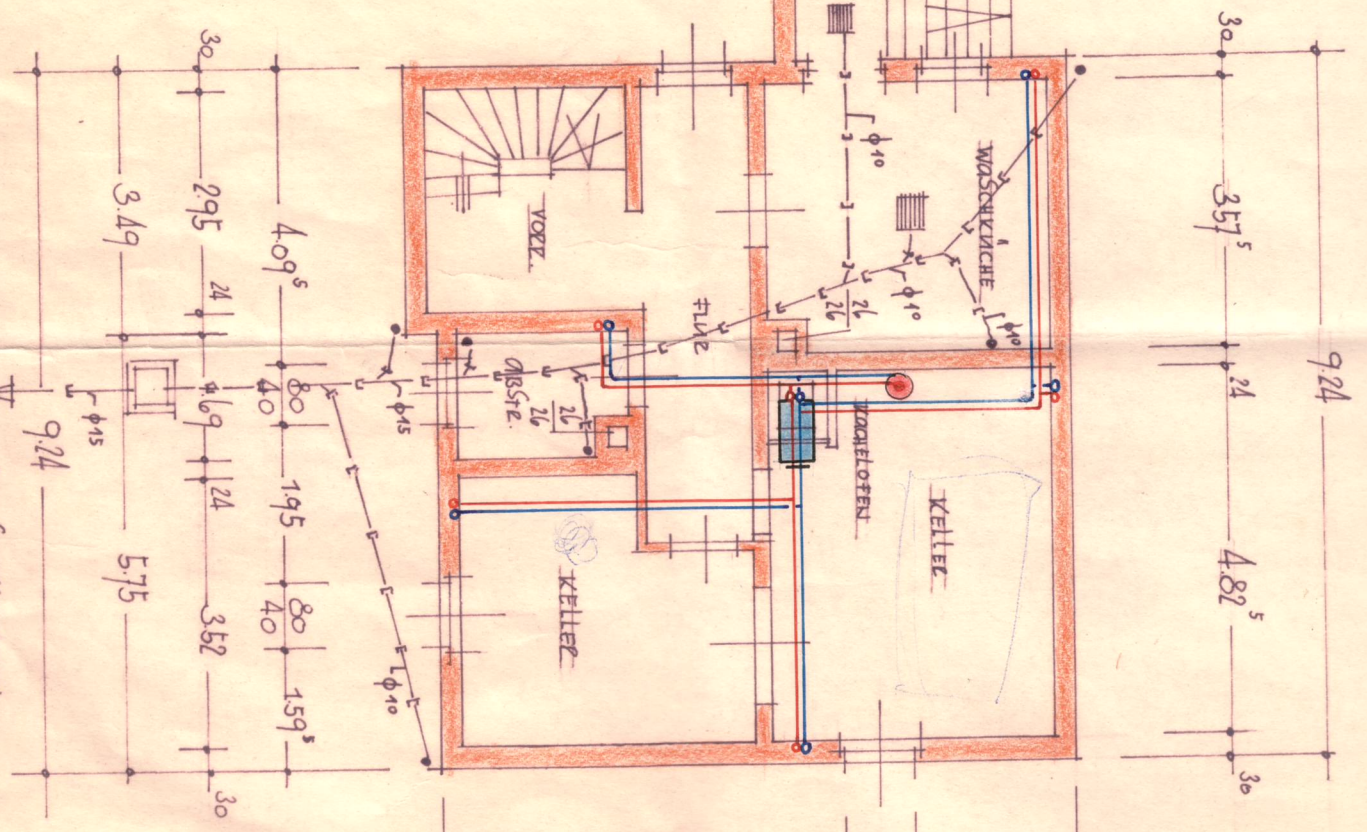




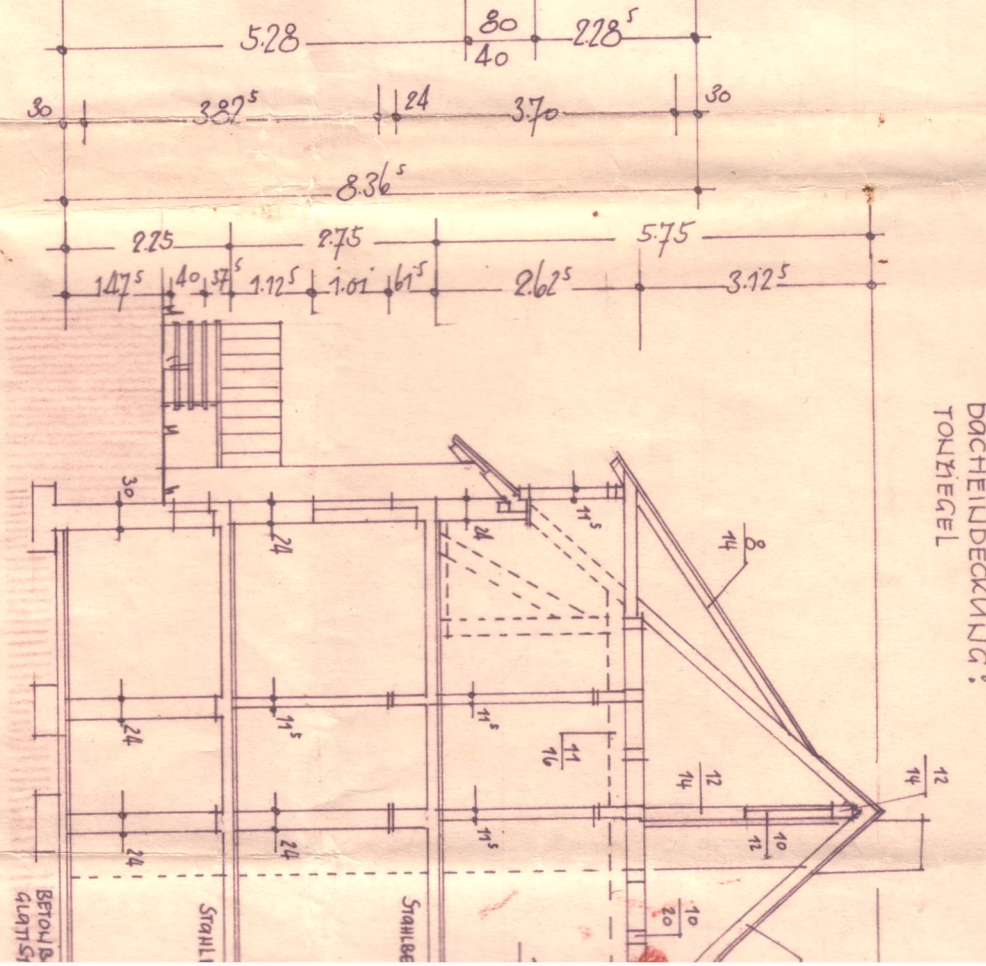


KELLERGESCHOSS

Zum Strassenkanal  
u. GEGÄNTEKLARANLAGE



DACHINDECKUNG;  
TONRIEGEL

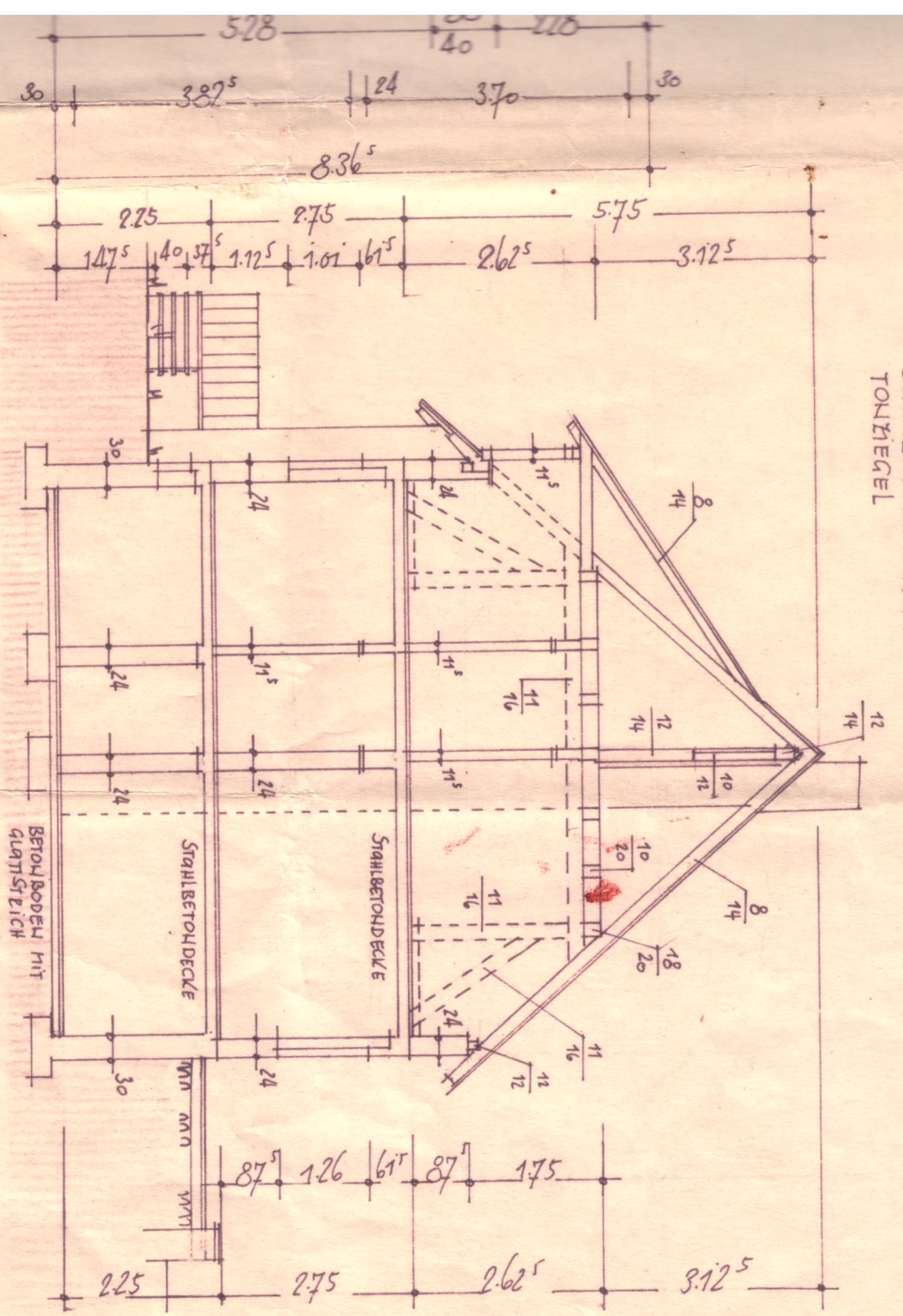


OVERSCHNITT

**NEUMANN**  
ZENTRALHEIZUNGEN GmbH  
Offenerung - Apparatebau  
678 PIRMASENS  
Tunnelstr. 24 - Telefon 4821



DACHEINDECKUNG:  
TONZIEGEL



QUERSCHNITT

**NEUMANN**

ZENTRALHEIZUNGEN GmbH

Ofenheizung - Apparatebau

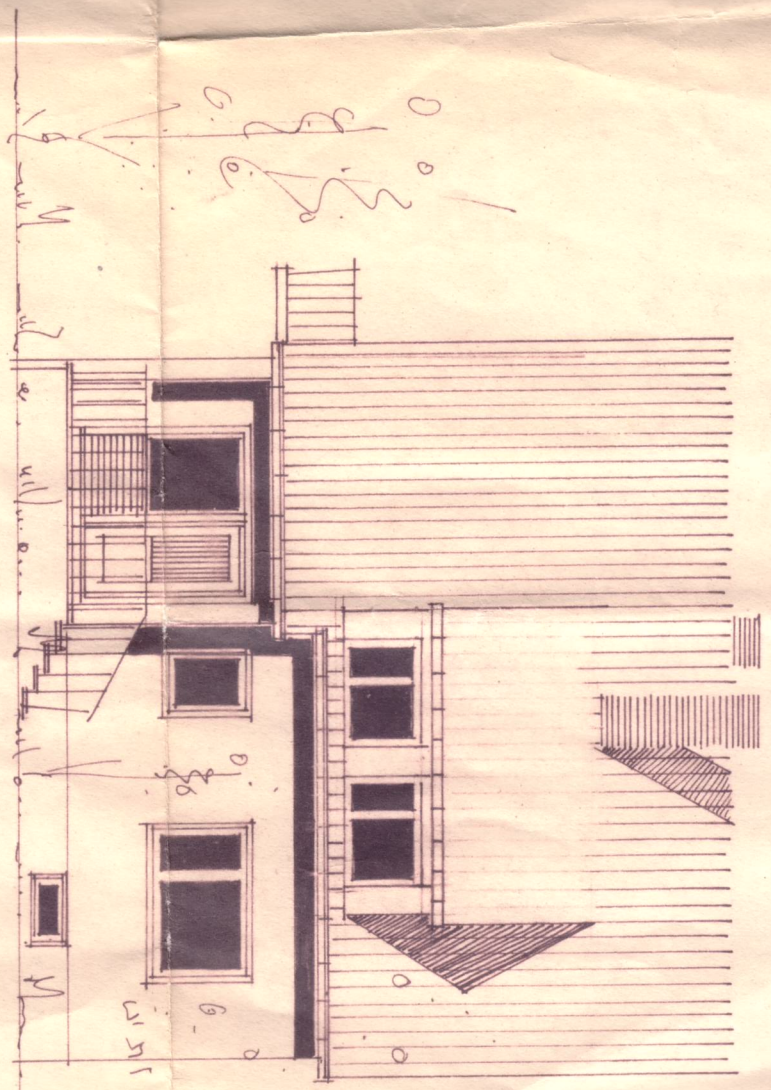
678 PIRMASENS

Tunnelstr. 24 - Telefon 4821

WILDFISCHBACH, 17. OKT. 1962



GEMEINNÜTZIGES SIEDLUNGS- U. WOHNNINGSWERK  
DER DIÖZESE SPEYER  
WOHNUNGSNEUBAU: OTTO REISDORF  
IM MÜNCHTWEILER/RODALE  
"IN DER LÖNGKEHE"

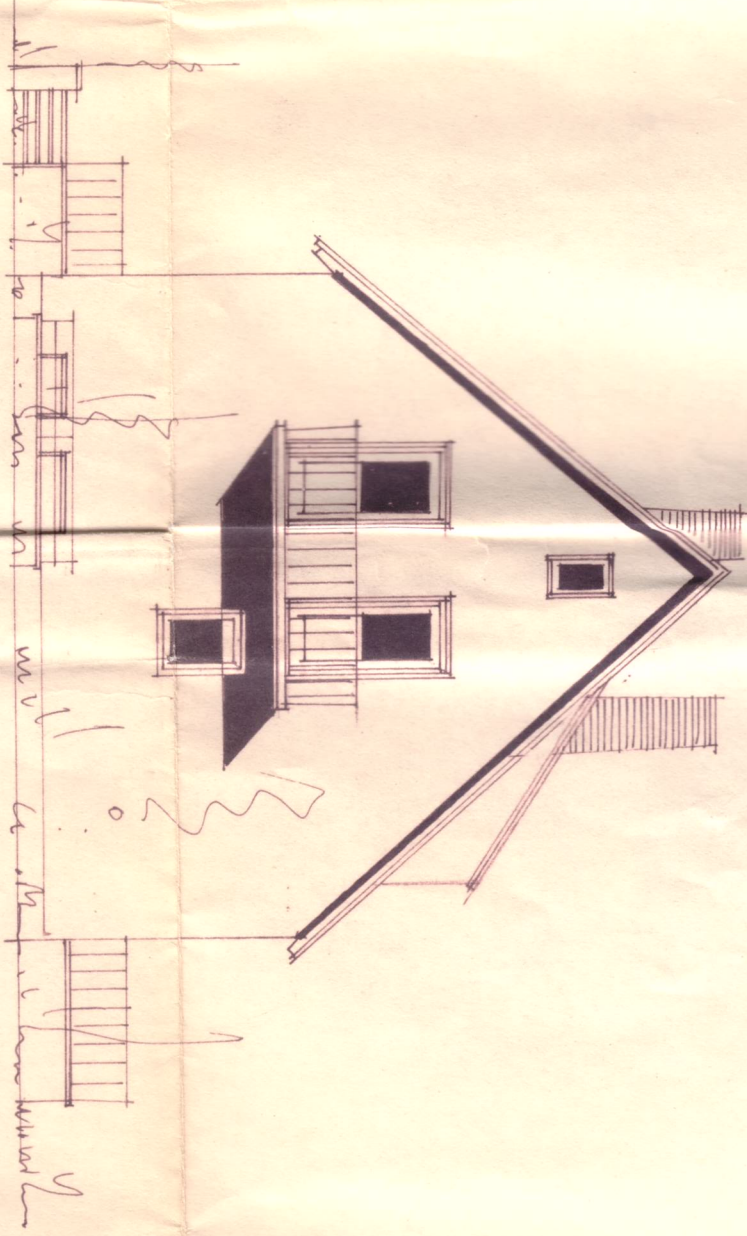
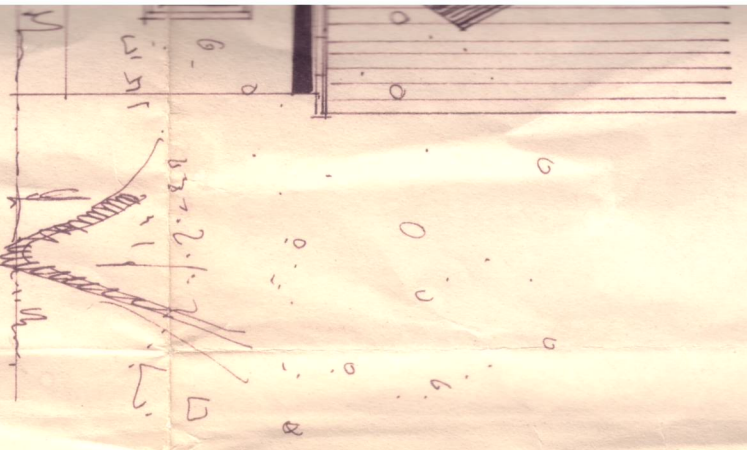


STRAßENSEITENSICHT

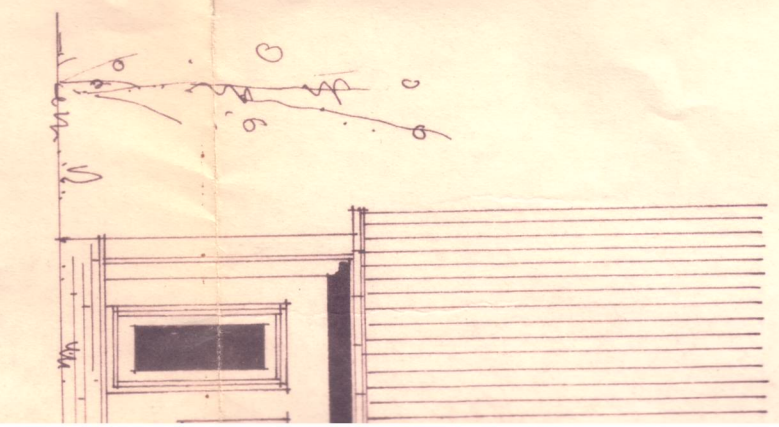


GIEBELANSICHT





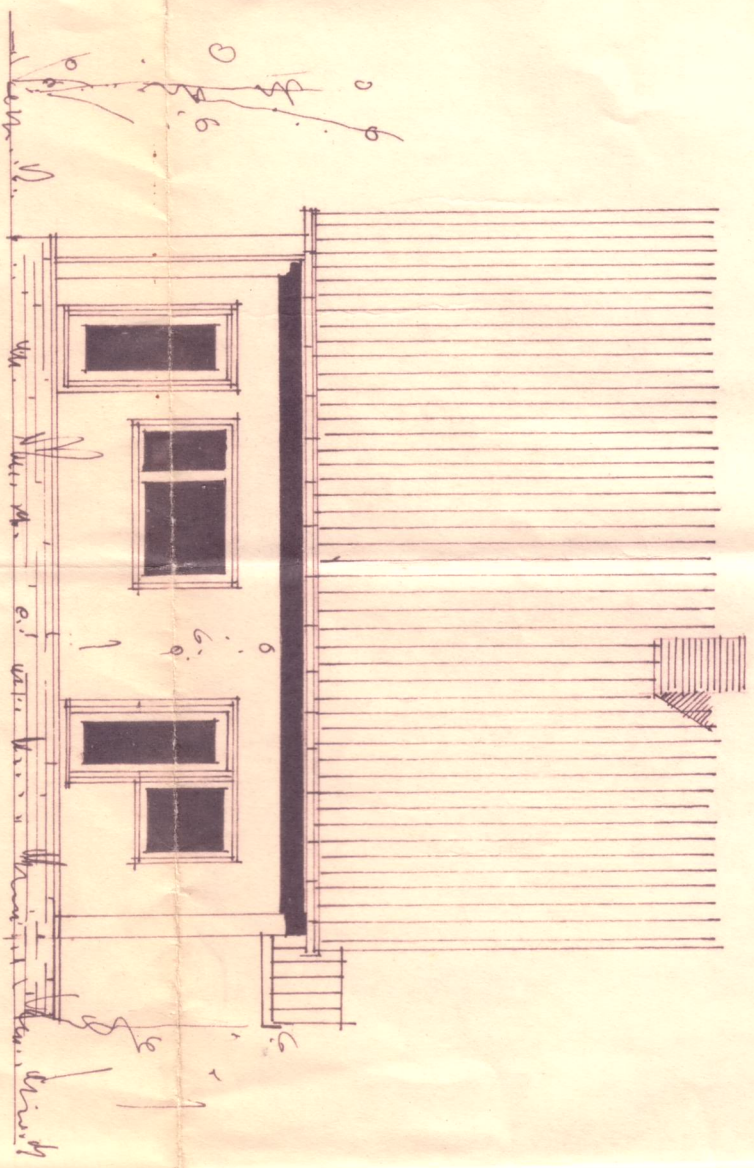
GIEBELANSICHT



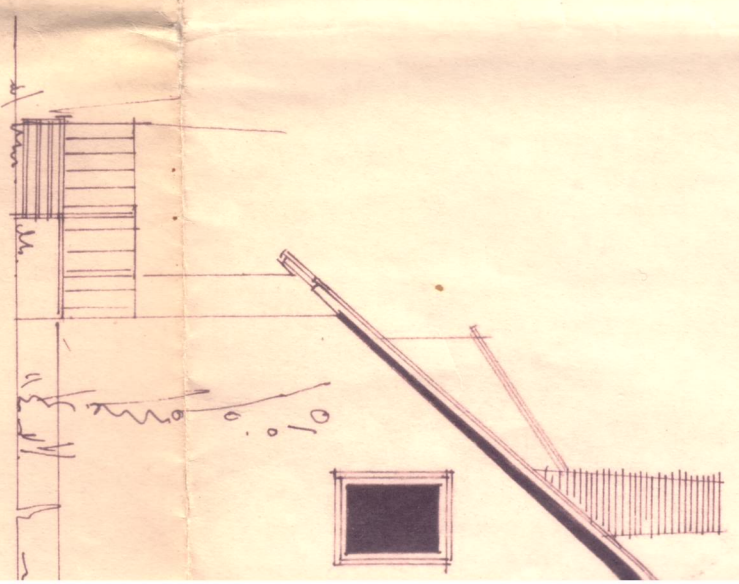
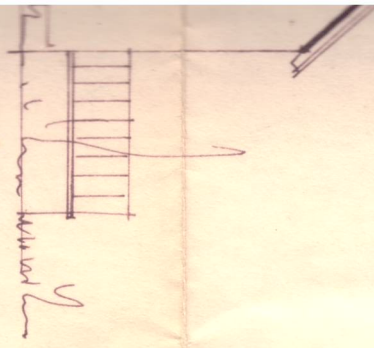


ARCHITEKT:

- 1 \_\_\_\_\_
- 2 \_\_\_\_\_
- 3 \_\_\_\_\_
- 4 \_\_\_\_\_



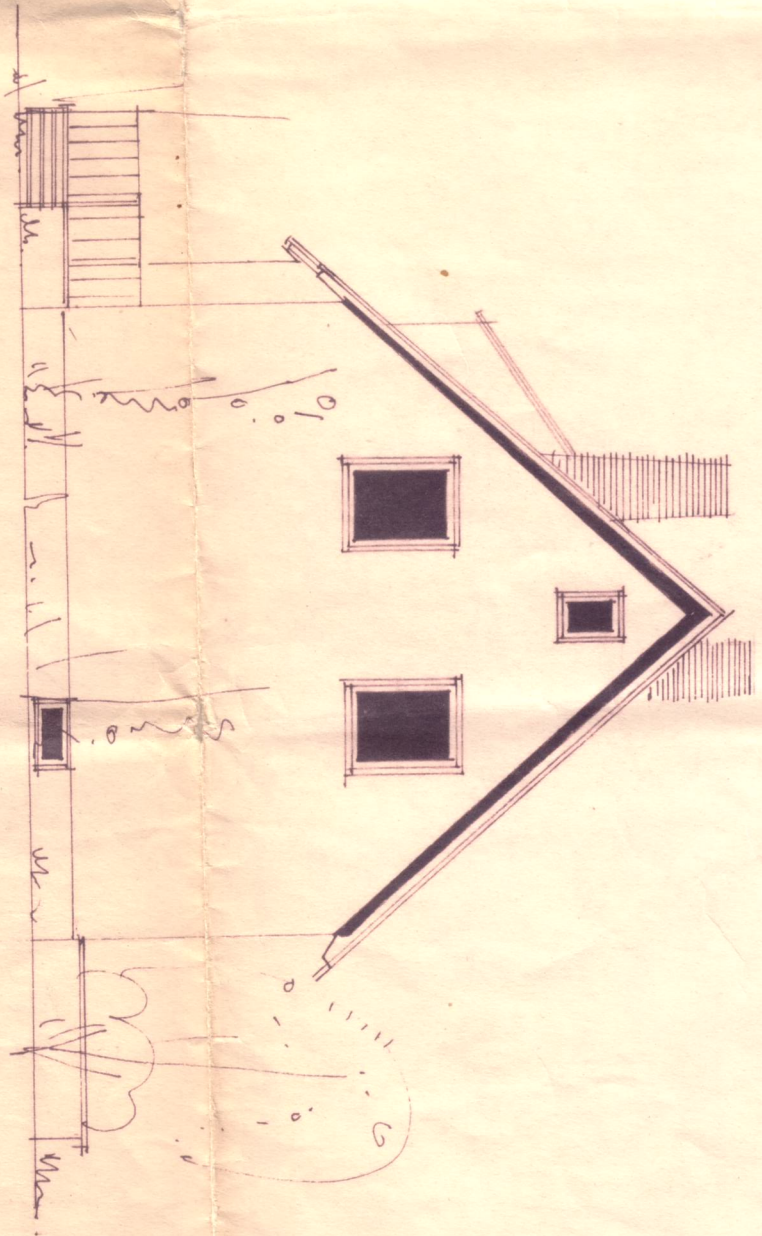
RÜCKANSICHT



GIEBEL



- 1 \_\_\_\_\_
- 2 \_\_\_\_\_
- 3 \_\_\_\_\_
- 4 \_\_\_\_\_



ICHTT

GIEBELANSICHT