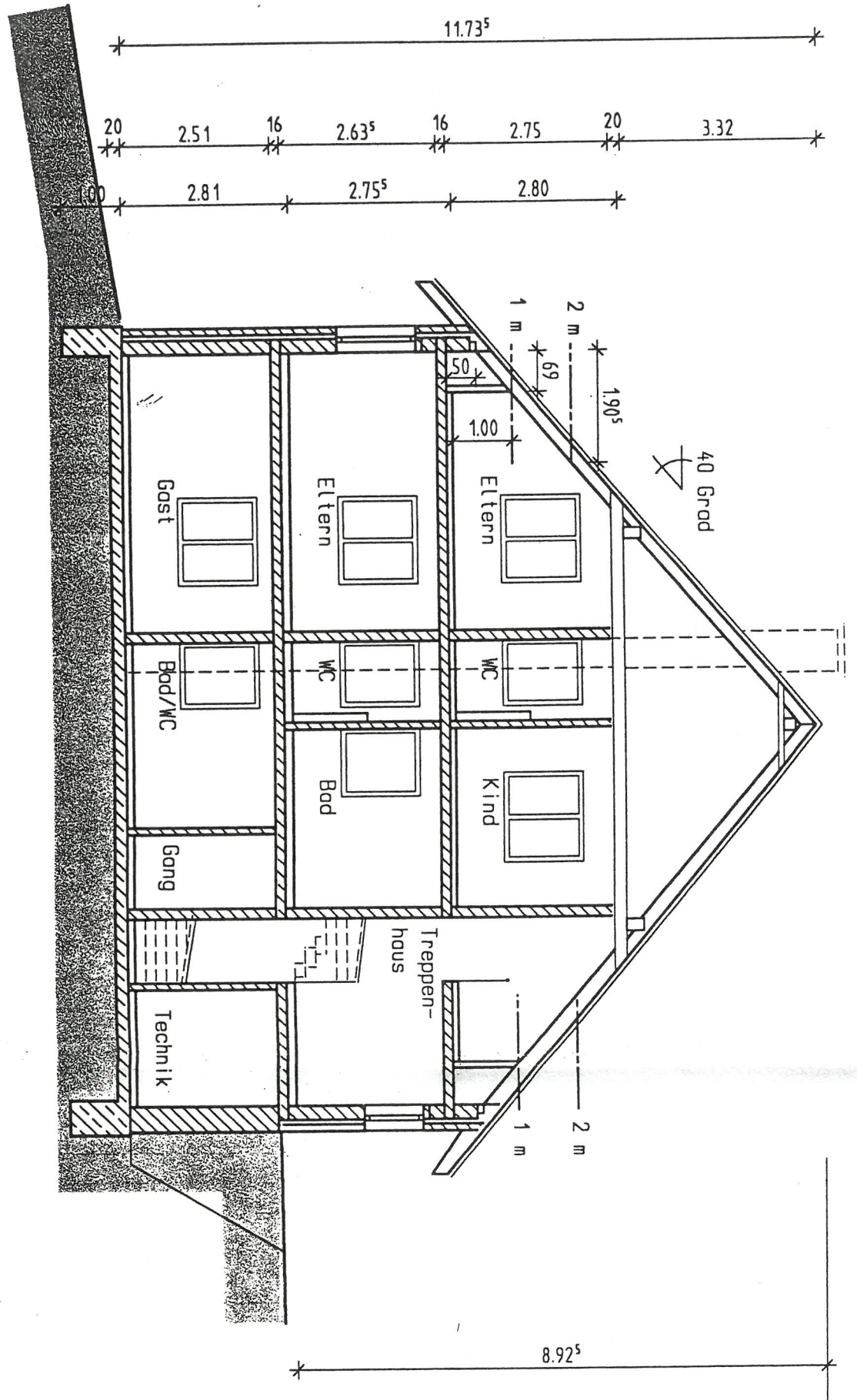
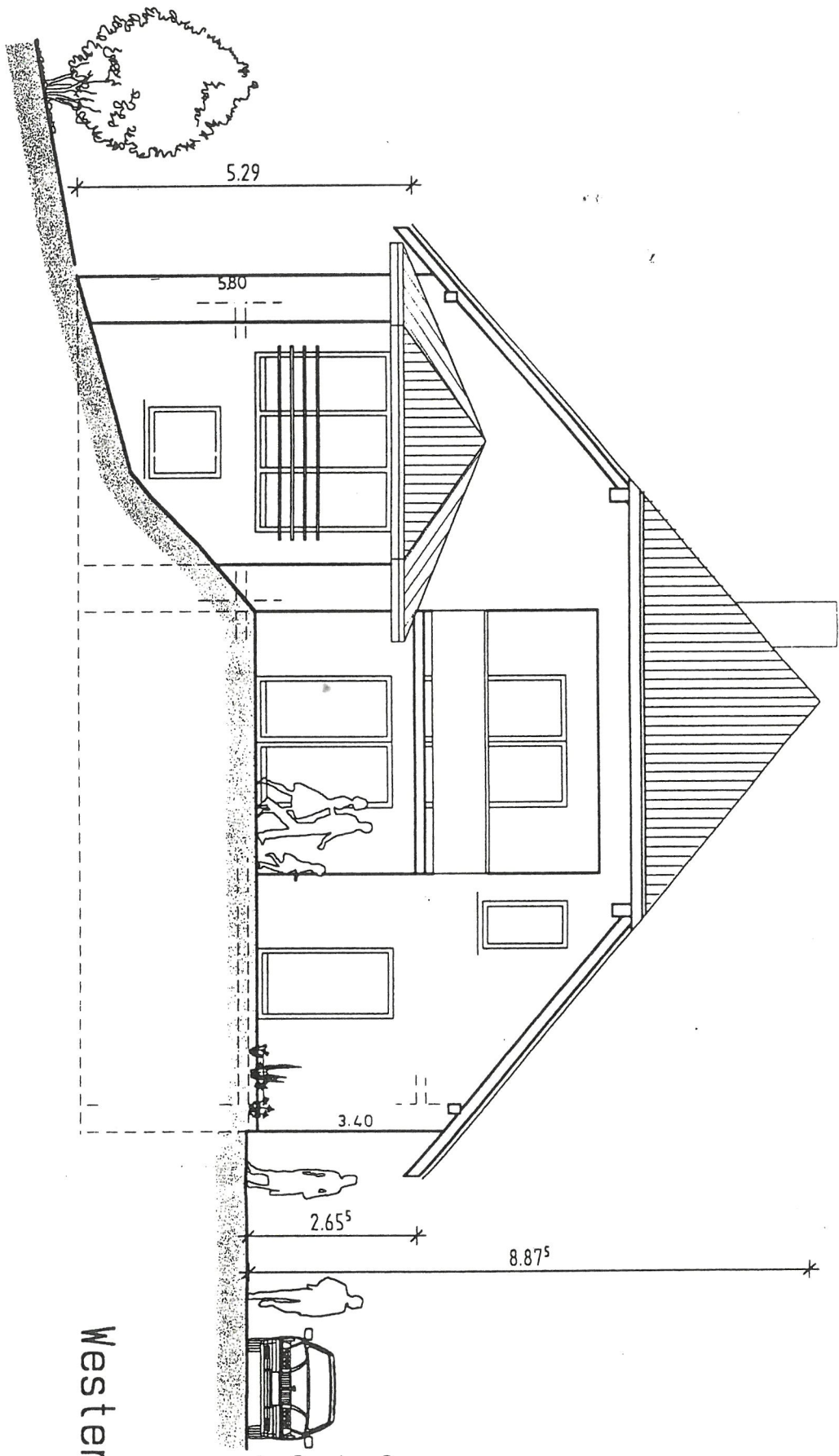
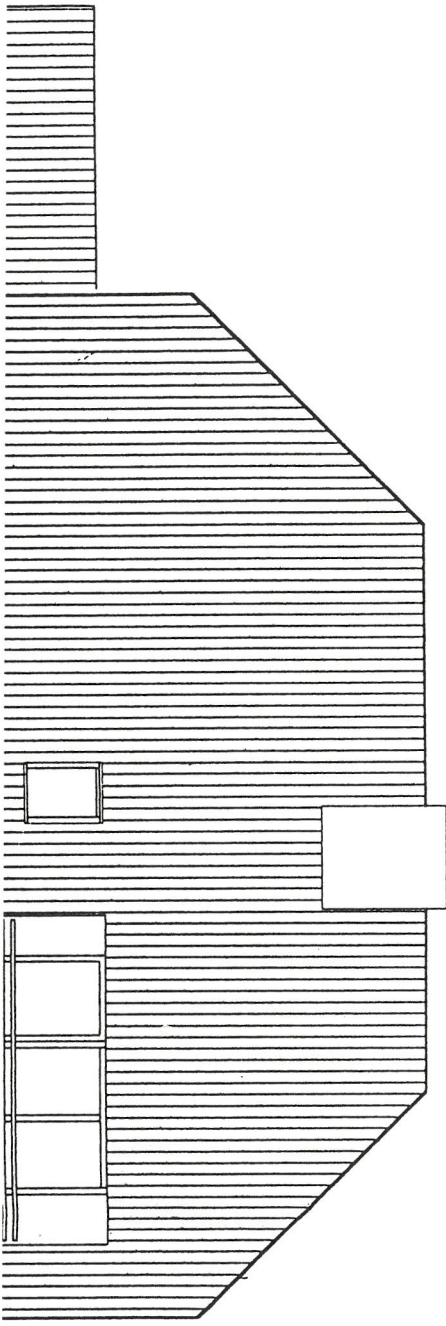


Schnitt

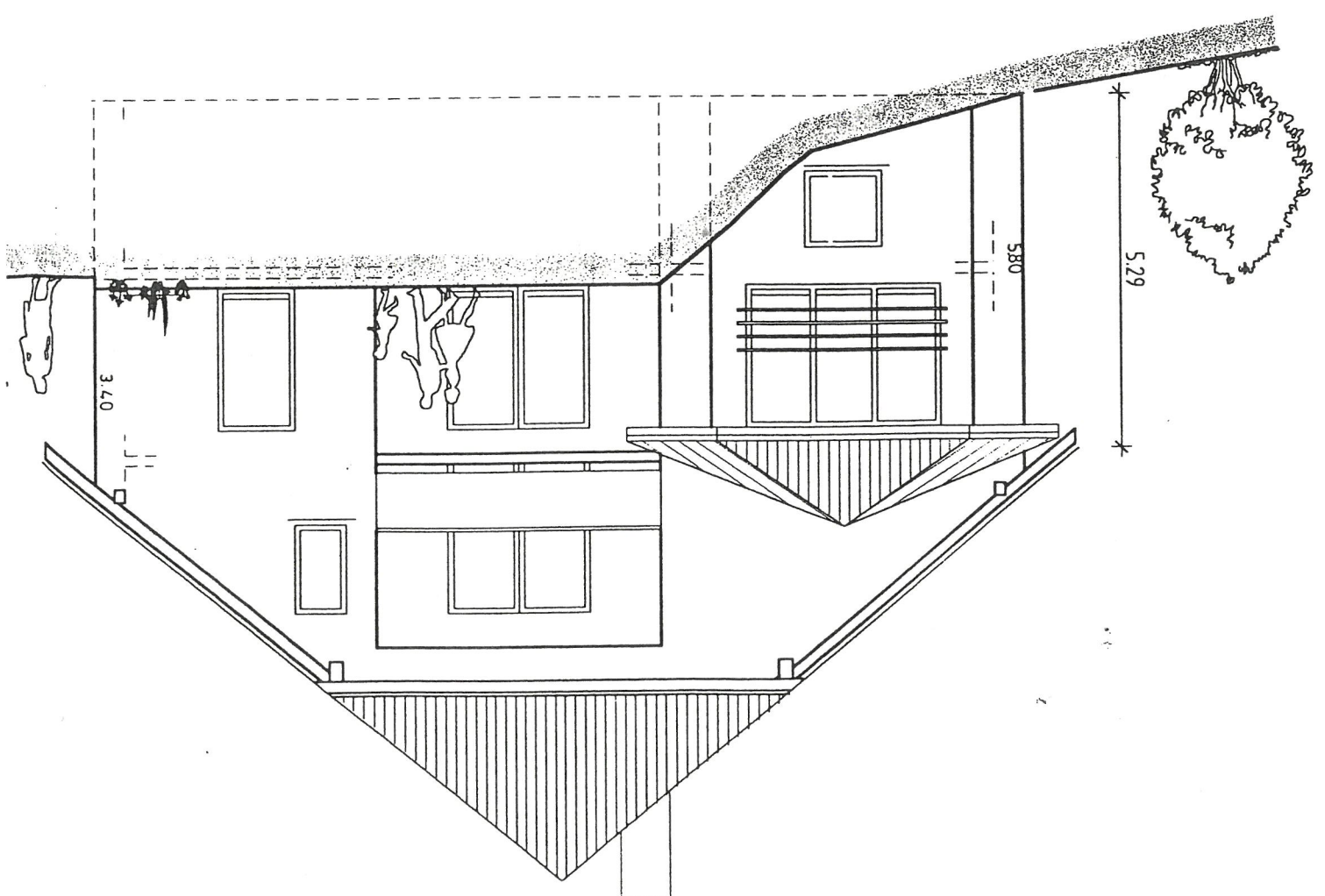
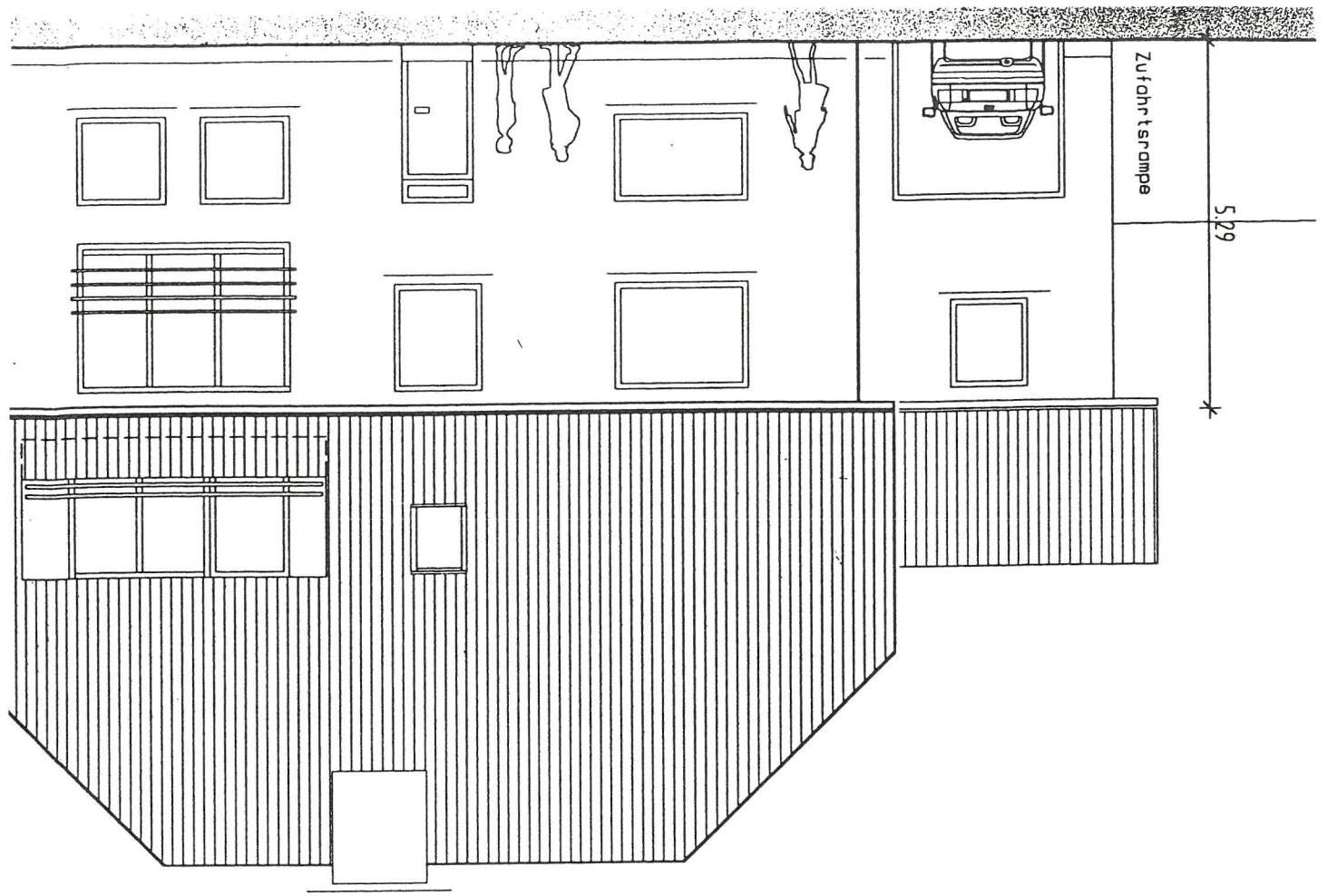




Westen

Am Runden Berg

Norden



Strosse

Am Runden Berg

Grundstücks-
grenze

8.87^s

2.65^s

6.32^s

Osten

Zufahrtsrampe

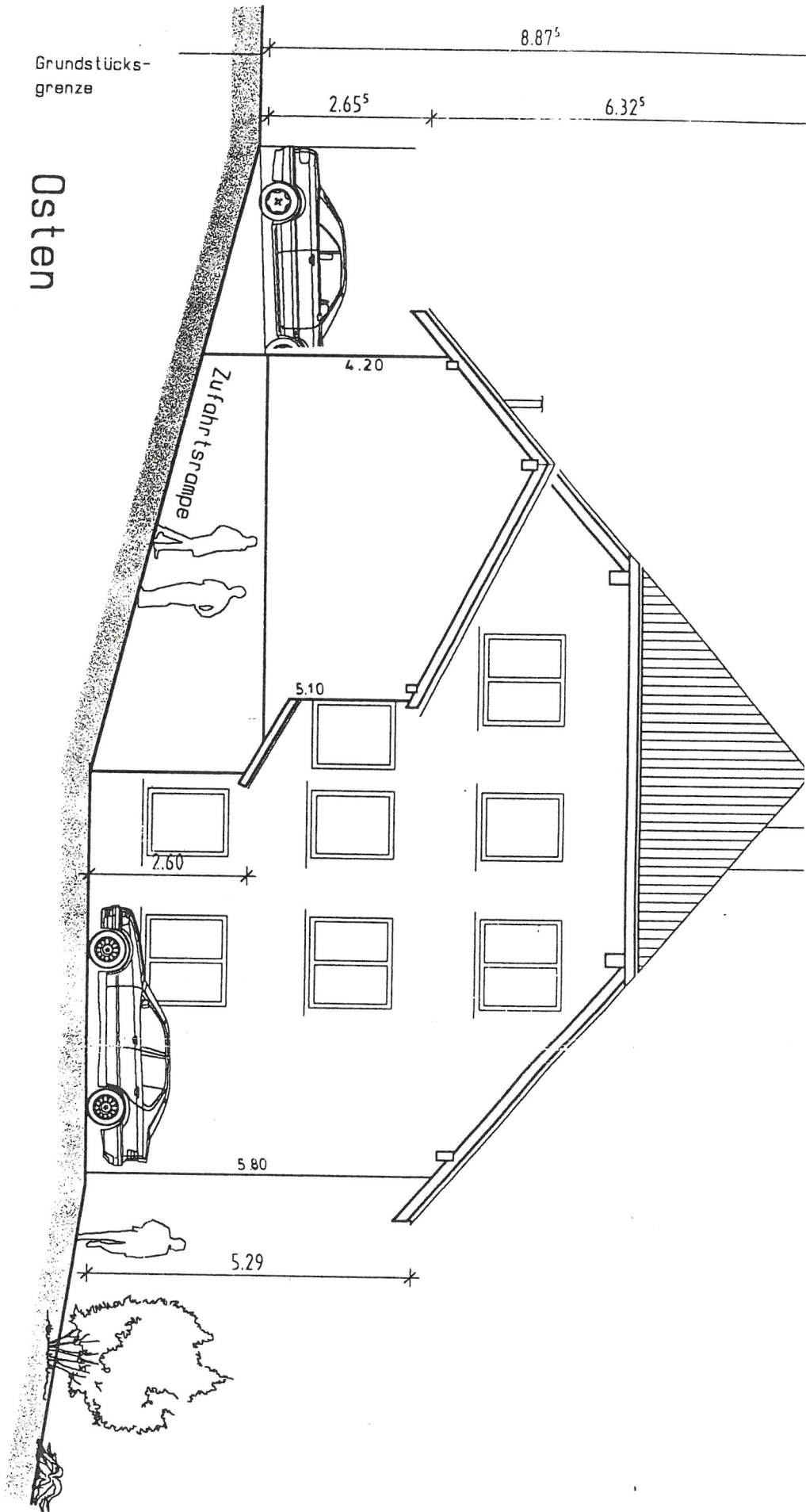
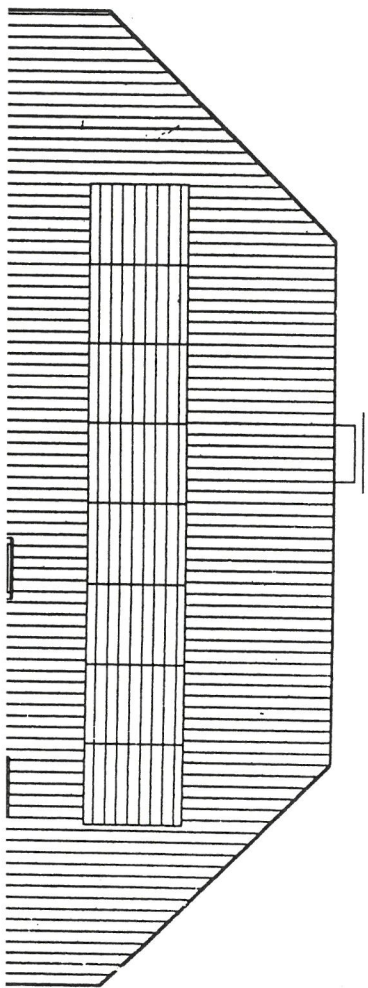
4.20

5.10

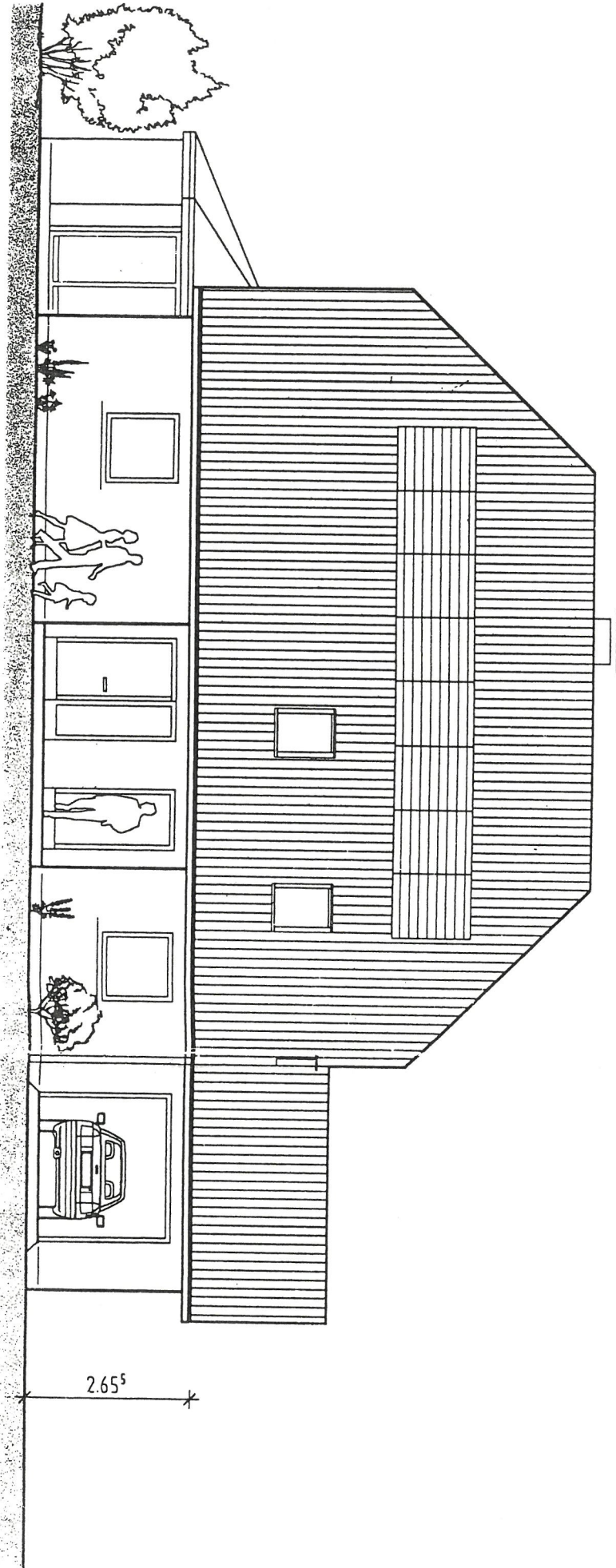
2.60

5.80

5.29



Süden



Strasse

Am Runde

Grundstücks-
grenze

2.65

Osten

