



PLANTA BAJA



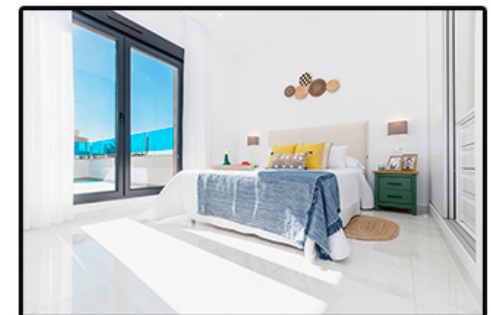
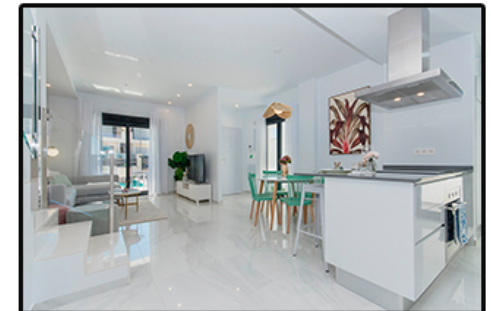
PLANTA PRIMERA



PLANTA CUBIERTAS

SUPERFICIES

SUP. CONSTRUIDA PB Y P1	118,67 m ²
TERRAZAS	20,70 m ²
TOTAL	139,37 m ²



SOLARIUM OPCIONAL OPTIONAL SOLARIUM

SOLARIUM	46,30 m ²
----------	----------------------

3 DORMITORIOS + 3 BAÑOS
3 BEDROOMS + 3 BATHROOMS