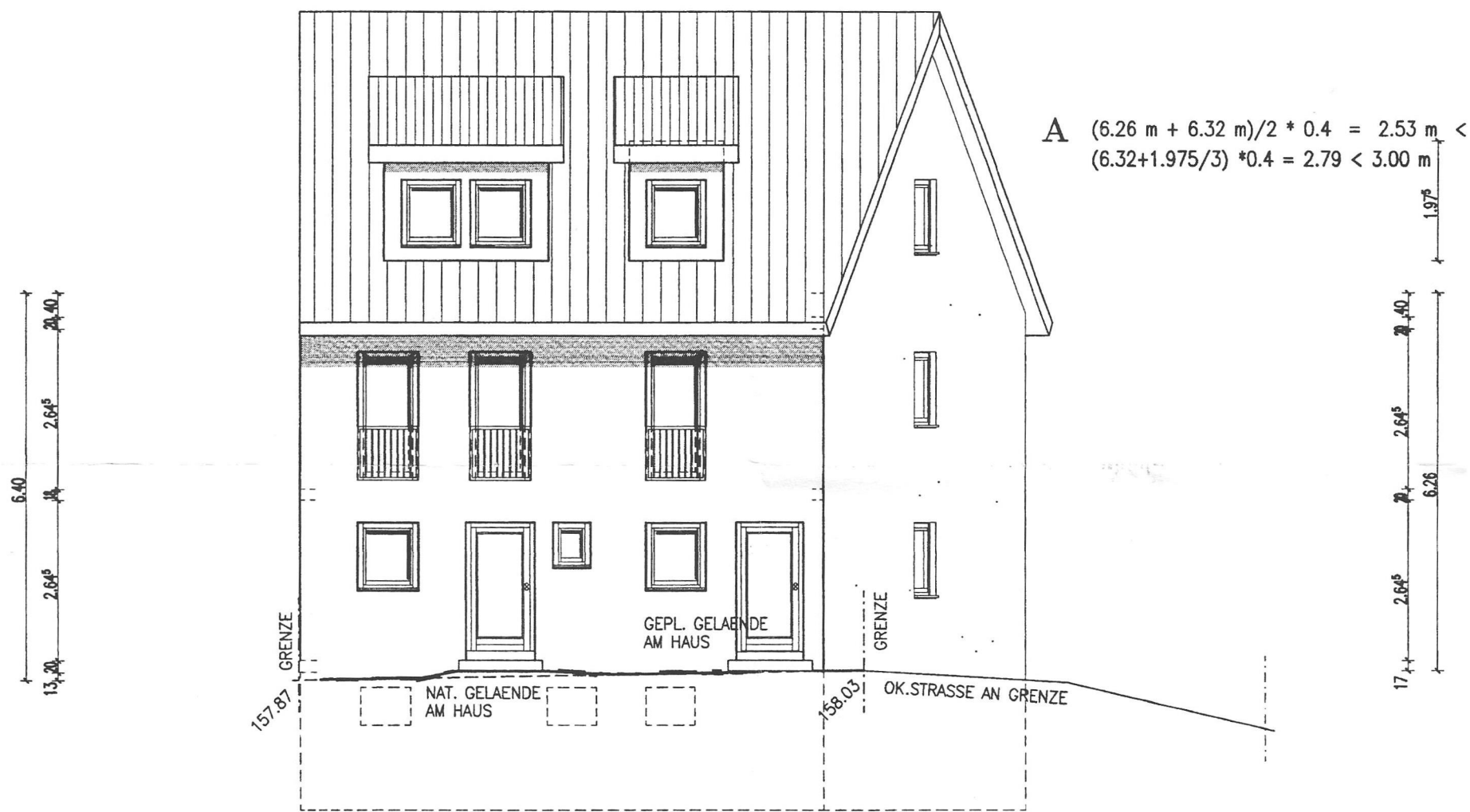




C $(6.46 \text{ m} + 6.92 \text{ m})/2 * 0.4 = 2.68 \text{ m} < 3.00 \text{ m}$
 $(6.87 \text{ m} + 1.975 \text{ m} /3) * 0.4 = 3.01 \text{ m} \hat{=} 3.00 \text{ m}$

SUED-ANSICHT



A $(6.26 \text{ m} + 6.32 \text{ m})/2 * 0.4 = 2.53 \text{ m} <$
 $(6.32 + 1.975/3) * 0.4 = 2.79 < 3.00 \text{ m}$

NORD-ANSICHT