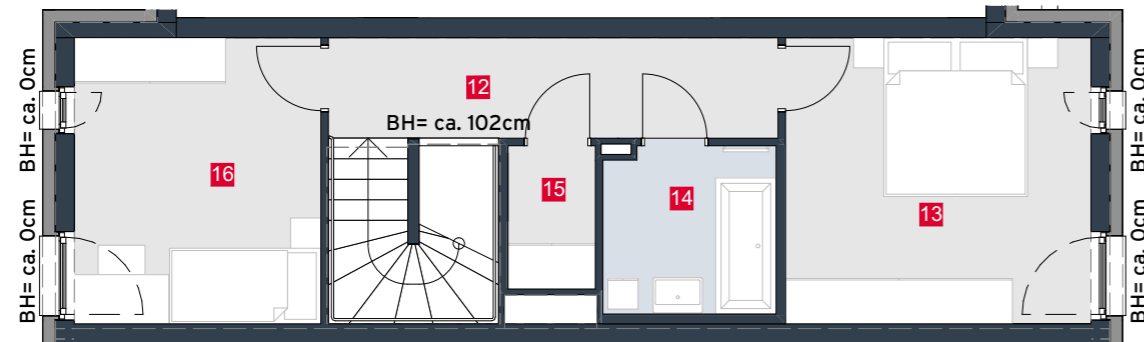


HAUS 03 TOP 06

Wohnfläche	129,98m ²
Terrasse	10,50m ²
Garten	29,25m ²

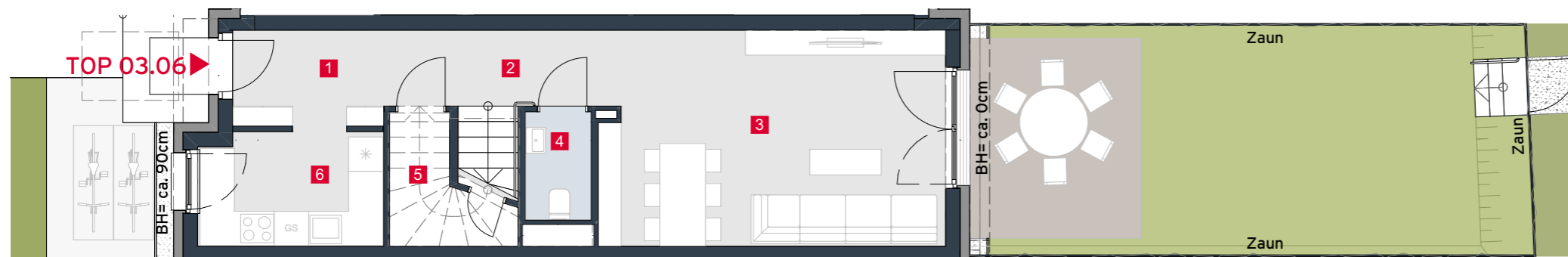
EG	1	Vorraum	3,88m ²
	2	Gang	4,97m ²
	3	Wohnzimmer	23,00m ²
	4	WC	2,14m ²
	5	AR	3,66m ²
	6	Küche	7,02m ²
OG1	7	Gang	8,69m ²
	8	Zimmer	13,10m ²
	9	Bad	6,32m ²
	10	WC	2,14m ²
DG	11	Zimmer	12,34m ²
	12	Gang	7,89m ²
	13	Zimmer	15,35m ²
	14	Bad	4,95m ²
	15	AR	2,19m ²
	16	Zimmer	12,34m ²



2. Obergeschoss



1. Obergeschoss



Erdgeschoss

