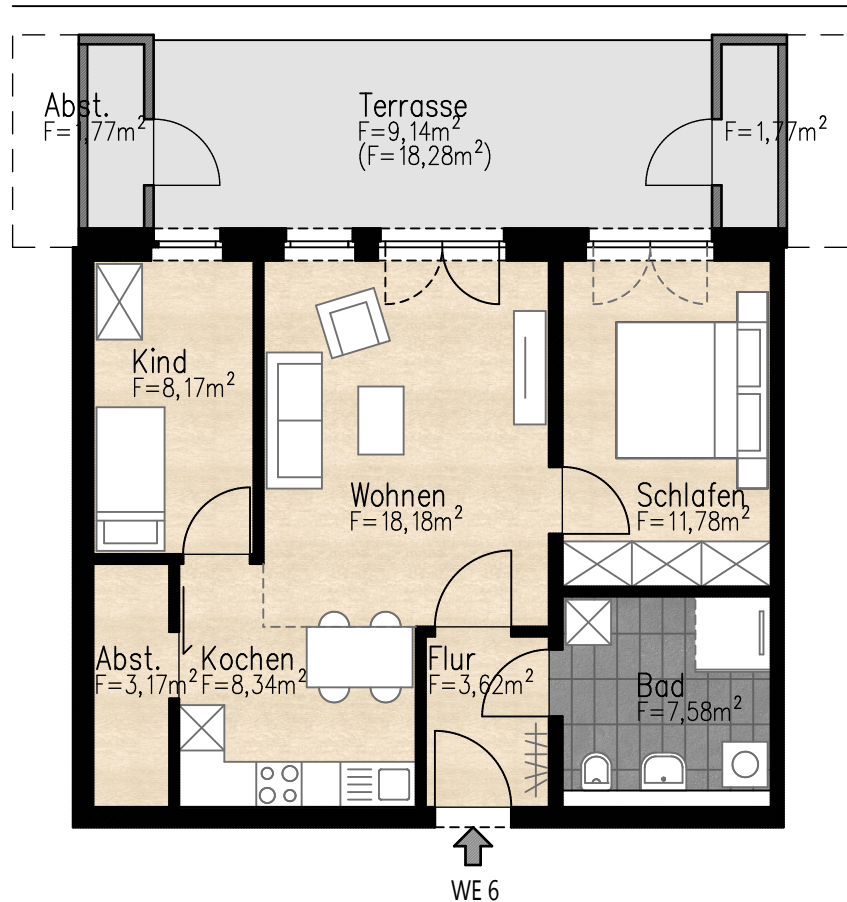
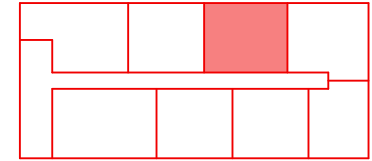


WE6 – Obergeschoss – 3 – Zimmer – 73,52m²



Flur	3,62m ²
Kochen	8,34m ²
Abst.	3,17m ²
Kind	8,17m ²
Wohnen	18,18m ²
Schlafen	11,78m ²
Bad	7,58m ²
Terrasse (50%)	9,14m ²
Abst.	1,77m ²
Abst.	1,77m ²
Gesamt	73,52m²

