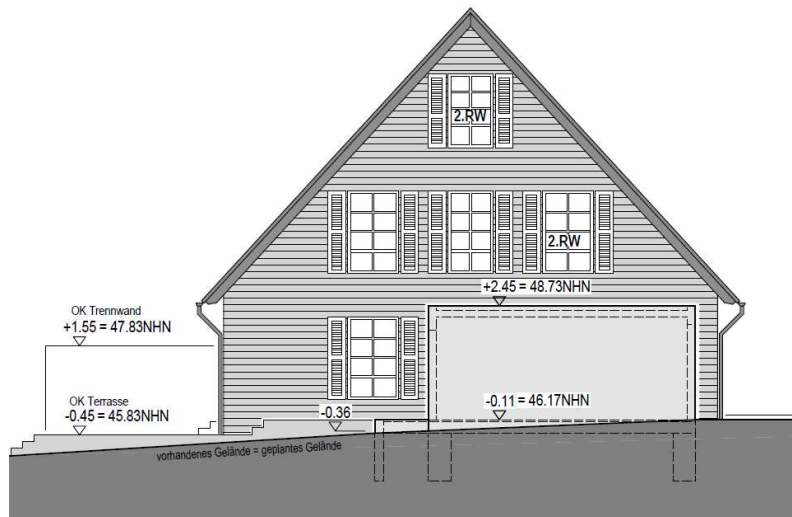
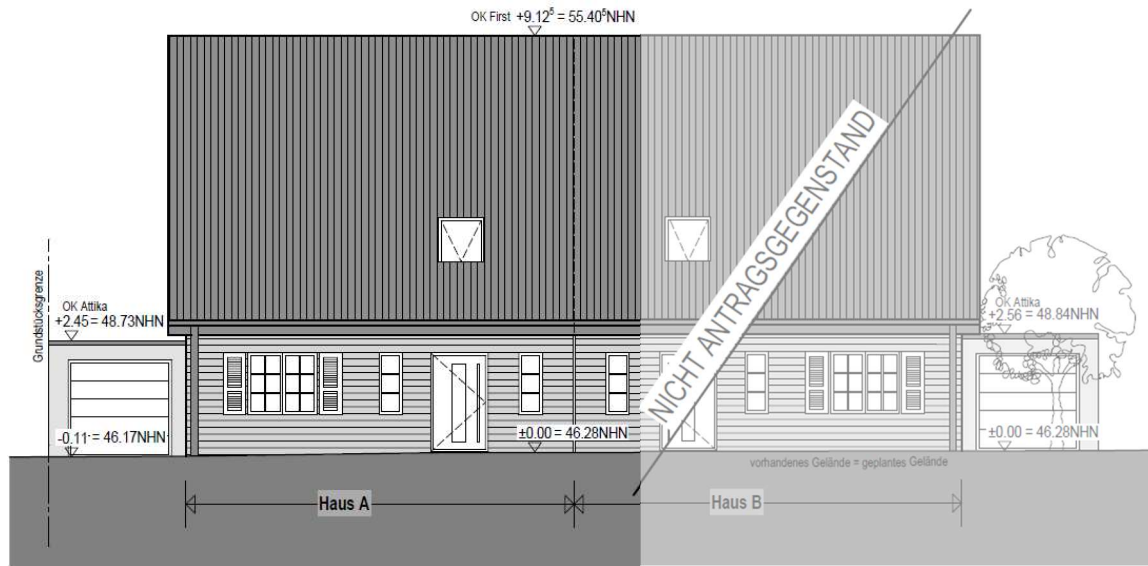


# Neubau einer Doppelhaushälfte in Nettetal

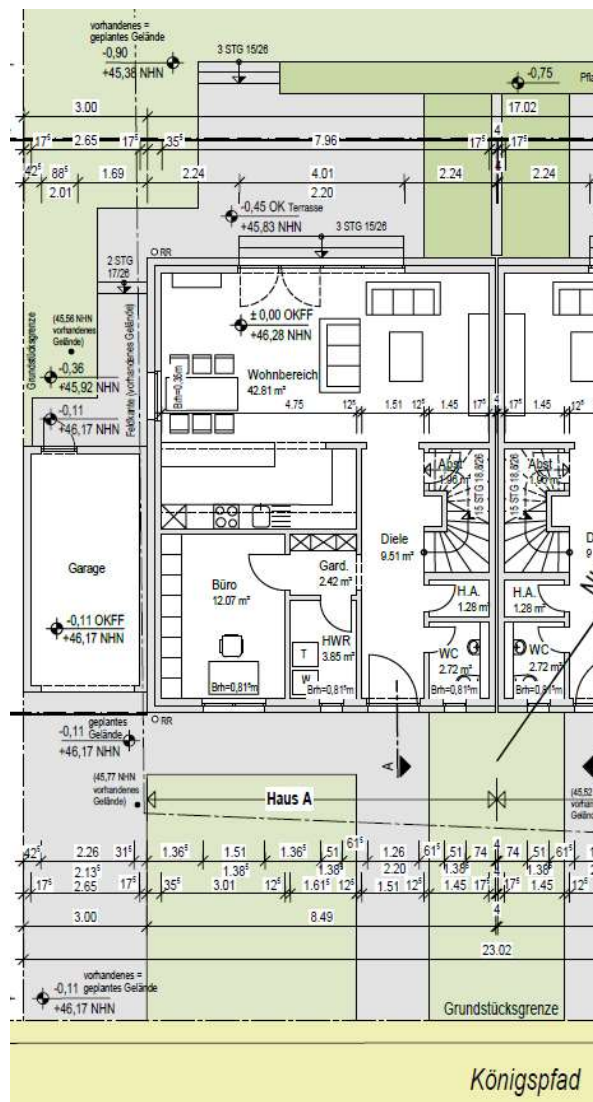


Straße:  
Wohnfläche:

Königspfad  
**160 m<sup>2</sup>**

## Erdgeschoss

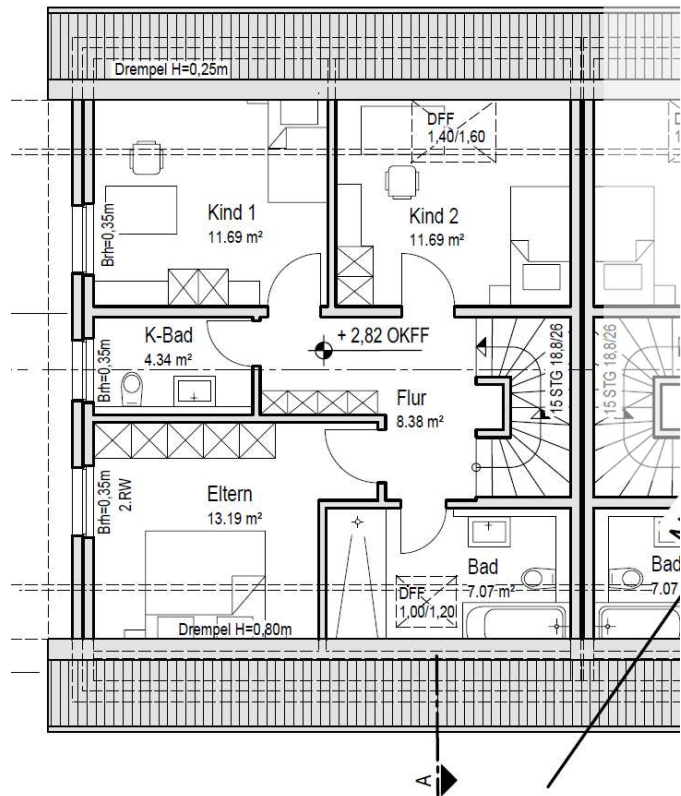
|              |                            |
|--------------|----------------------------|
| Diele        | 9,51 m <sup>2</sup>        |
| WC           | 2,72 m <sup>2</sup>        |
| H.A.         | 1,28 m <sup>2</sup>        |
| Gard.        | 2,42 m <sup>2</sup>        |
| HWR          | 3,85 m <sup>2</sup>        |
| Büro         | 12,07 m <sup>2</sup>       |
| Abst.        | 1,96 m <sup>2</sup>        |
| Wohnbereich  | 42,81 m <sup>2</sup>       |
| <b>Summe</b> | <b>76,62 m<sup>2</sup></b> |



Grundriss Erdgeschoss

## Dachgeschoss

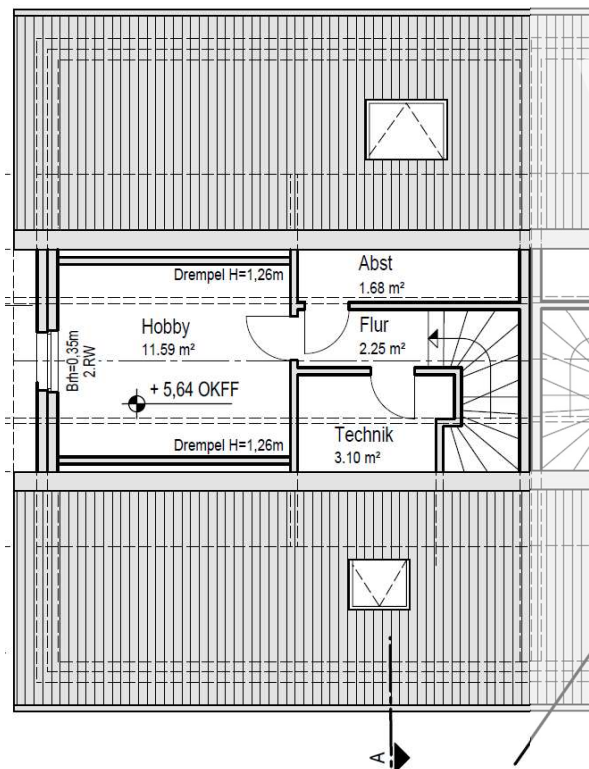
|              |                            |
|--------------|----------------------------|
| Flur         | 18,43 m <sup>2</sup>       |
| Kind 1       | 11,07 m <sup>2</sup>       |
| Kind 2       | 11,10 m <sup>2</sup>       |
| K-Bad        | 6,60 m <sup>2</sup>        |
| Bad          | 5,68 m <sup>2</sup>        |
| Eltern       | 11,46 m <sup>2</sup>       |
| <b>Summe</b> | <b>64,34 m<sup>2</sup></b> |



Grundriss Dachgeschoss

# Spitzboden

|              |                            |
|--------------|----------------------------|
| Flur         | 2,25 m <sup>2</sup>        |
| Abst.        | 1,68 m <sup>2</sup>        |
| Technik      | 3,10 m <sup>2</sup>        |
| Hobby        | 11,59 m <sup>2</sup>       |
| <b>Summe</b> | <b>18,62 m<sup>2</sup></b> |



Grundriss Spitzboden

---

## Zusammenstellung

|              |                             |
|--------------|-----------------------------|
| Erdgeschoss  | 76,62 m <sup>2</sup>        |
| Dachgeschoss | 64,34 m <sup>2</sup>        |
| Spitzboden   | 18,62 m <sup>2</sup>        |
| <b>Summe</b> | <b>159,58 m<sup>2</sup></b> |