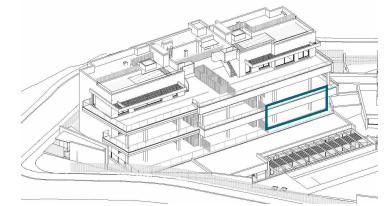


Apartment 10C

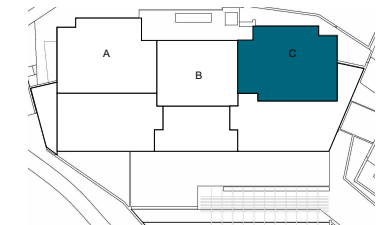
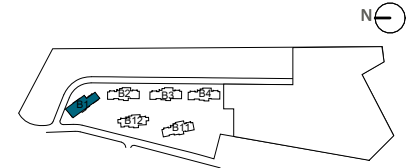
The information contained may be modified during the course of the work execution due to technical or legal requirements, without implying any reduction in the overall level of qualities. The access steps to the dwelling and exits to courtyards may be altered according to the level of the streets and it is up to the D.F. to set the criteria.



2m 4m 6m 8m 10m



LOCATION



BLOCK 1

APPROXIMATE AREAS

Entrance	4,39 m ²
Living room - Kitchen	44,54 m ²
Hall	2,92 m ²
Master bedroom	17,10 m ²
Master bathroom	6,74 m ²
Bedroom 2	12,49 m ²
Bedroom 3	12,64 m ²
Bathroom 2	4,85 m ²
INTERNAL USEFUL FLOOR AREA	105,67 m²

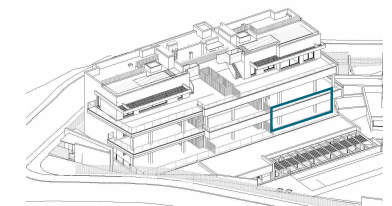
INTERNAL BUILT AREA	122,57 m²
P.P. COMMON AREAS	37,11 m²
INTERNAL GROSS AREA INCLUDING PP. COMMON AREAS	159,68 m²

EXTERNAL AREAS	
Covered laundry room	4,07 m ²
Covered terrace	74,36 m ²
Uncovered terrace	25,19 m ²
EXTERNAL USEFUL FLOOR AREA	103,62 m²

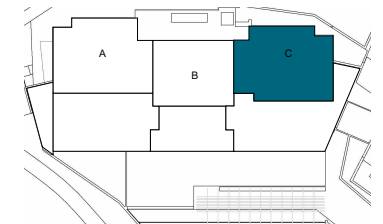
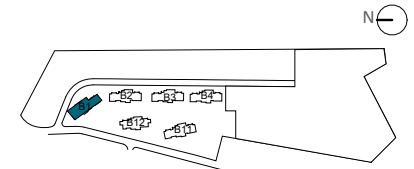
REGARDING DECRETO BOJA 218/2005	
TOTAL USEFUL FLOOR AREA	116,24 m²
TOTAL BUILT AREA	170,25 m²

Apartment 10C

The information contained may be modified during the course of the work execution due to technical or legal requirements, without implying any reduction in the overall level of qualities. The access steps to the dwelling and exits to courtyards may be altered according to the level of the streets and it is up to the D.F. to set the criteria.



LOCATION



BLOCK 1

APPROXIMATE AREAS

Entrance	4,39 m ²
Living room - Kitchen	44,54 m ²
Hall	2,92 m ²
Master bedroom	17,10 m ²
Master bathroom	6,74 m ²
Bedroom 2	12,49 m ²
Bedroom 3	12,64 m ²
Bathroom 2	4,85 m ²
INTERNAL USEFUL FLOOR AREA	105,67 m²

INTERNAL BUILT AREA	122,57 m²
P.P. COMMON AREAS	37,11 m²
INTERNAL BUILT AREA INCLUDING PP. COMMON AREAS	159,68 m²

EXTERNAL AREAS	
Covered laundry room	4,07 m ²
Covered terrace	74,36 m ²
Uncovered terrace	25,19 m ²
EXTERNAL USEFUL FLOOR AREA	103,62 m²

REGARDING DECRETO BOJA 218/2005	
TOTAL USEFUL FLOOR AREA	116,24 m²
TOTAL BUILT AREA	170,25 m²