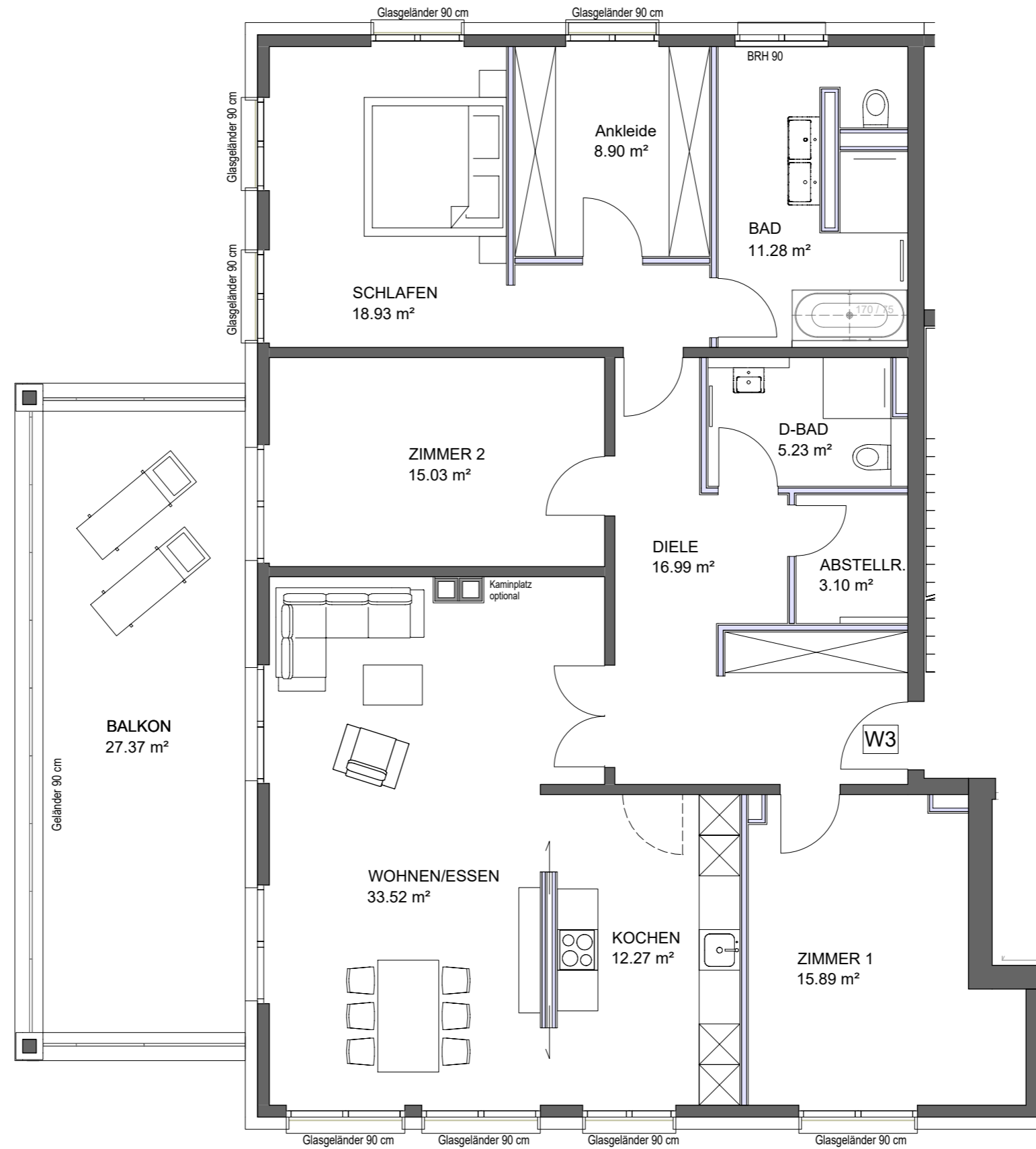
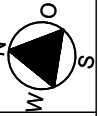
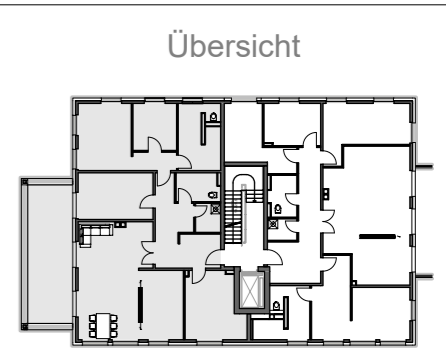


# Stadtvilla Müllenhoffweg 64



1 m 1 m 1 m



**Wohnung 3**

Obergeschoss

Wohnfläche gem. WoFIVO : 154,81 m<sup>2</sup>  
(Balkon zu 50%)

nutzbare Wohnfläche : 168,49 m<sup>2</sup>

Maßstab 1:75