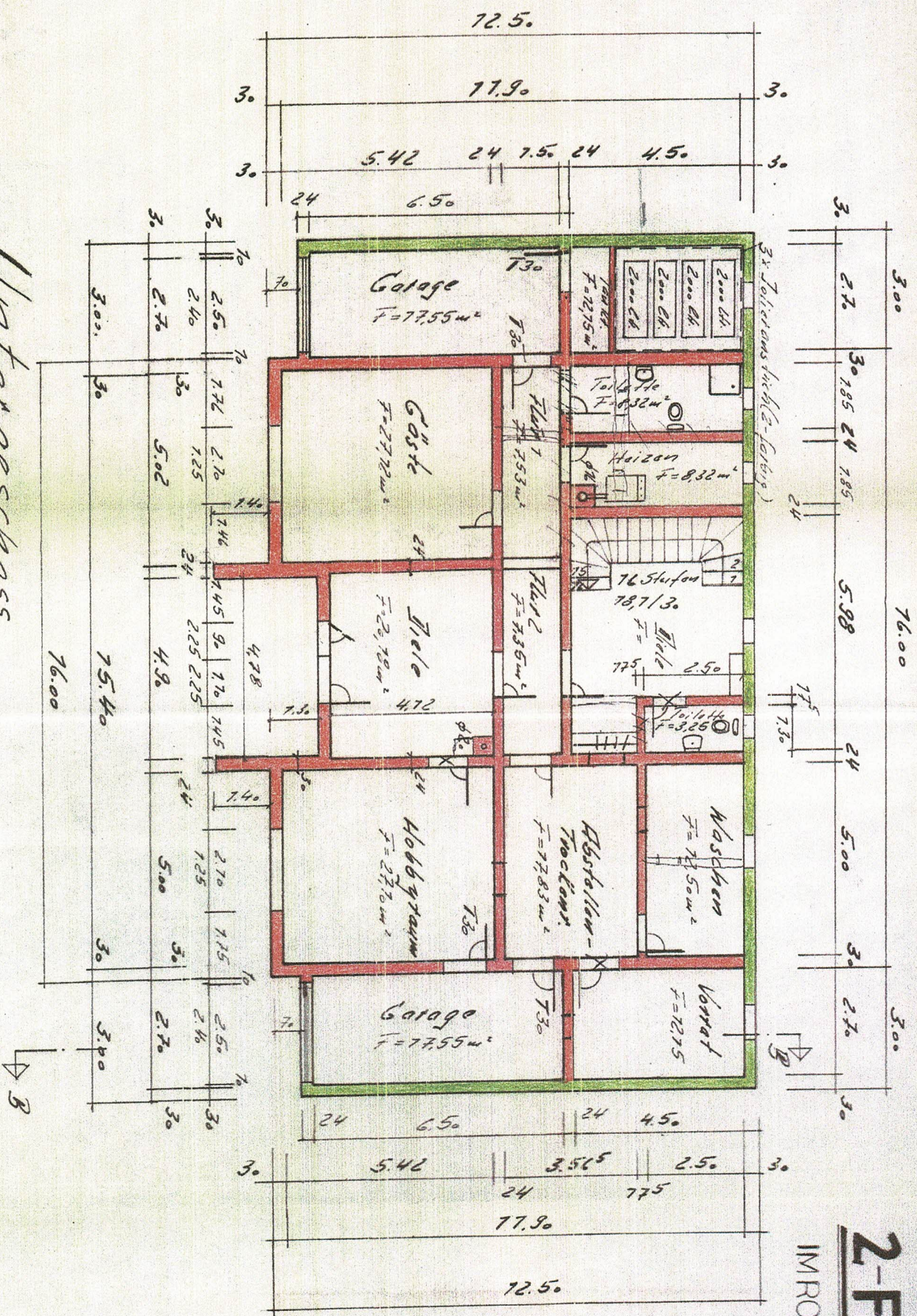


# 2-FAMILI

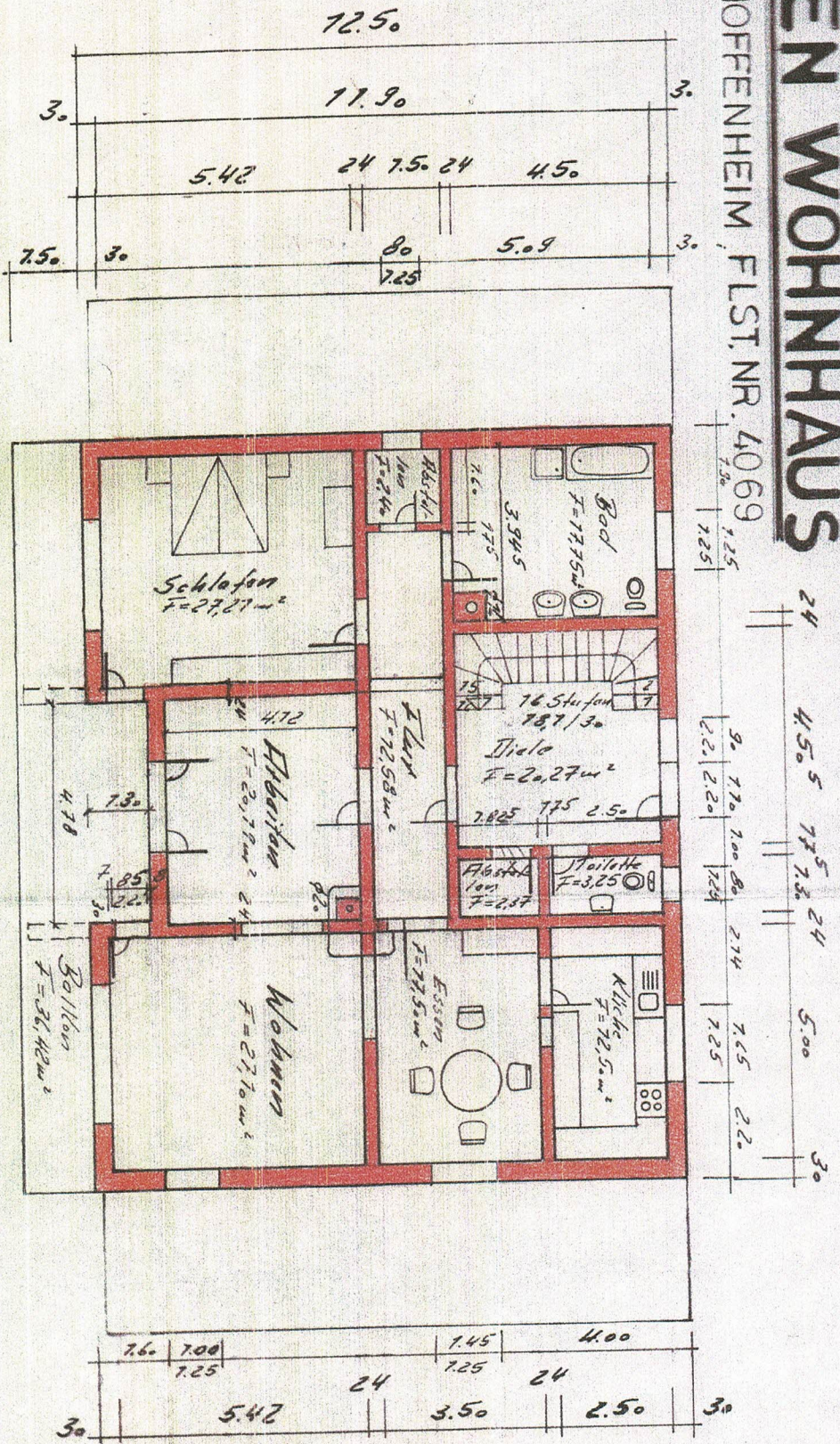
IMROT 4, 74889 F

Untergeschoss

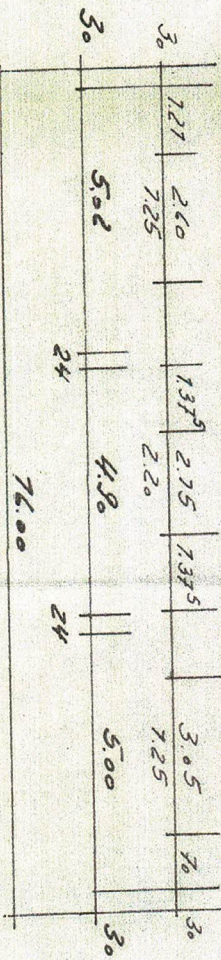


# LIEN WOHNHAUS

89 HOFFENHEIM, FLST. NR. 4069



Erdgeschoss



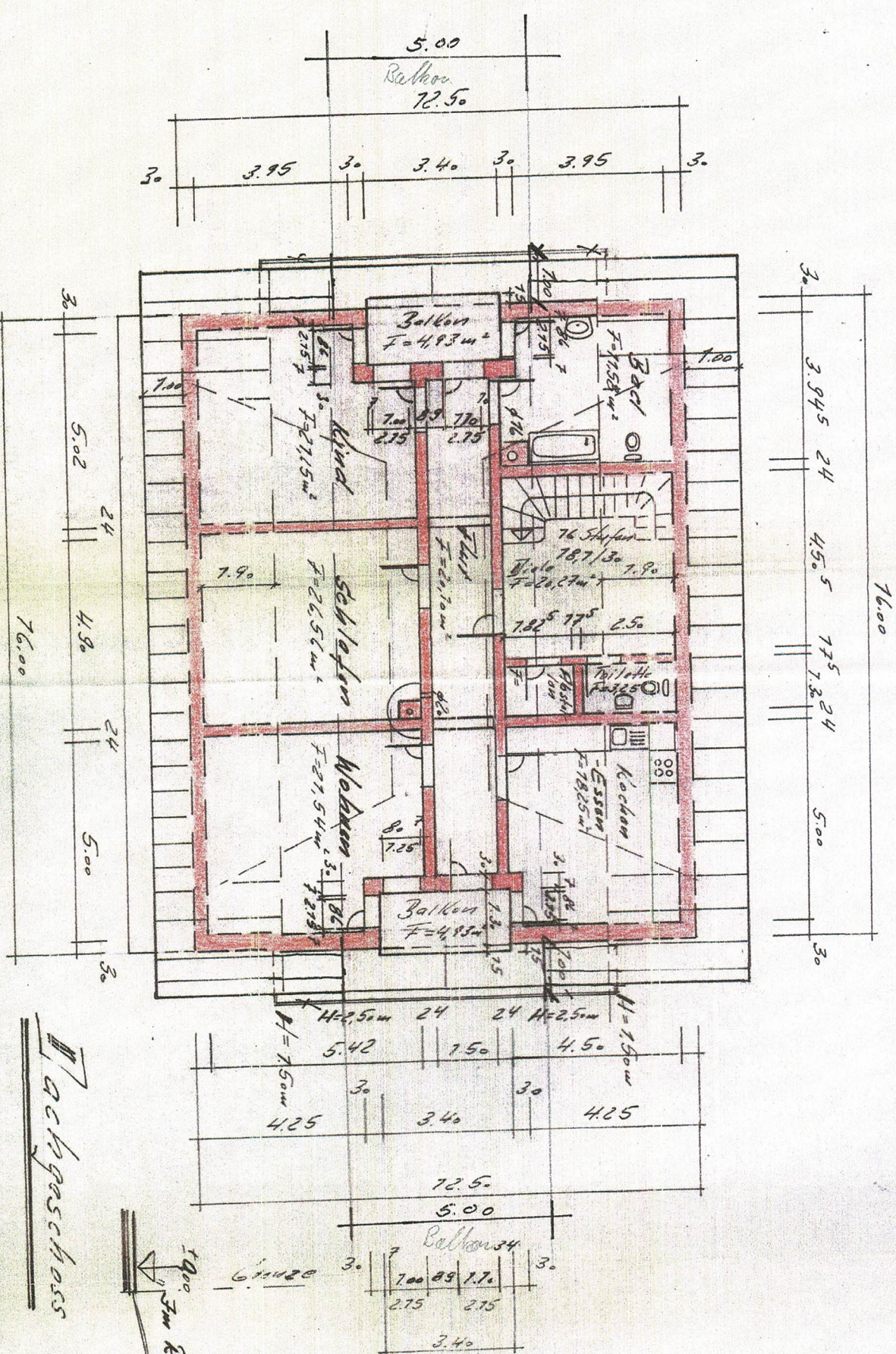
*BALHERR*

*PLANUNG*

*(Signature)*

ROLAND KAPLAN  
ARCHITECT  
MAX-PLANCK-STR. 8  
68789 ST. LEON-RÖT  
TEL. 06227/59293

BALHERR	Zwei-Familien Wohn		
BALHERR	Grundriss		
BALHERR	Z.	MST	1:1
BALHERR	Datum	Mg. 93	PLAN



**Archgaschoss**

