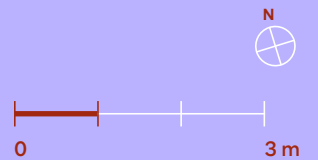
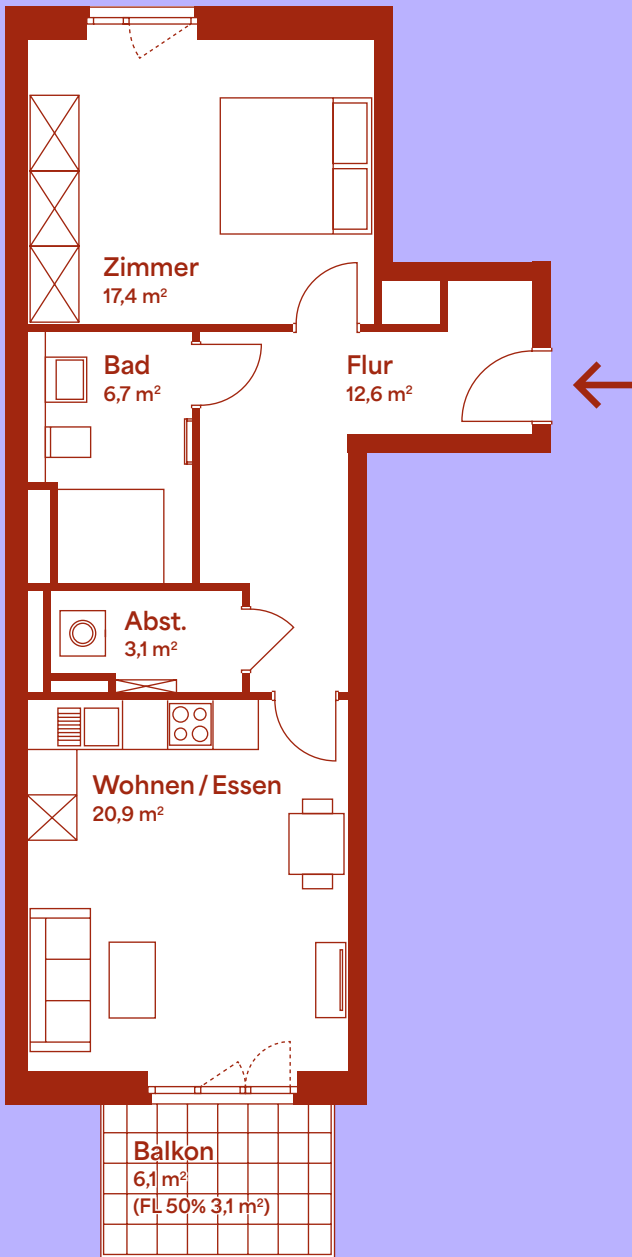


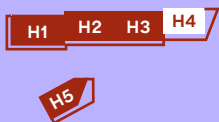
Wohneinheit 60

2. Obergeschoss | Haus 4 | 2 Zimmer

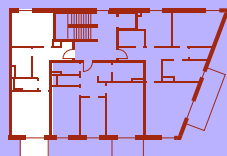
ROTEN
BLEICHER



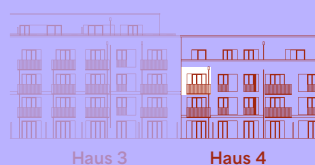
LAGEPLAN



2. OBERGESCHOSS



ANSICHT WEST



Zimmer	17,4 m ²
Flur	12,6 m ²
Bad	6,7 m ²
Abstellraum	3,1 m ²
Wohnen / Essen	20,9 m ²
Balkon (50%)	3,1 m ²
Grundfläche ca.	63,8 m²